



Your PDF Guides

You can read the recommendations in the user guide, the technical guide or the installation guide for SONY BRAVIA KDL-40EX525. You'll find the answers to all your questions on the SONY BRAVIA KDL-40EX525 in the user manual (information, specifications, safety advice, size, accessories, etc.). Detailed instructions for use are in the User's Guide.

User manual SONY BRAVIA KDL-40EX525
User guide SONY BRAVIA KDL-40EX525
Operating instructions SONY BRAVIA KDL-40EX525
Instructions for use SONY BRAVIA KDL-40EX525
Instruction manual SONY BRAVIA KDL-40EX525

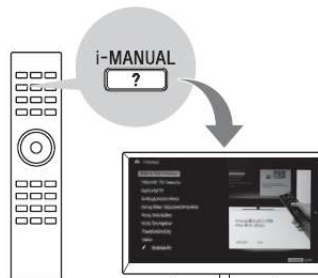
SONY

4-269-996-E3(1)

LCD
Digital Colour TV

Operating Instructions

Getting Started
Using Your BRAVIA TV
Network Setup
Additional Information



BRAVIA

KDL-55EX725 / 49HX725 / 46EX729 / 46EX728 / 46EX727 / 46EX726 / 46EX725 / 46EX525
KDL-46CX525 / 40HX725 / 40EX729 / 40EX728 / 40EX727 / 40EX726 / 40EX725 / 40EX525
KDL-40CX525 / 37EX725 / 37EX525 / 32EX729 / 32EX728 / 32EX727 / 32EX726 / 32EX725
KDL-32EX525 / 32EX425 / 32CX525 / 26EX525 / 24EX325 / 22EX325



[You're reading an excerpt. Click here to read official SONY BRAVIA KDL-40EX525 user guide](http://yourpdfguides.com/dref/3812107)

<http://yourpdfguides.com/dref/3812107>

Manual abstract:

Trademark information is a registered trademark of the DVB Project. HDMI, the HDMI Logo, and HighDefinition Multimedia Interface are trademarks or registered trademarks of HDMI Licensing LLC in the United States and other countries. DLNA®, the DLNA Logo and DLNA CERTIFIED® are trademarks, service marks, or certification marks of the Digital Living Network Alliance. DivX® is a video file compression technology, developed by DivX, Inc. ® and are used under license. ® This is an official DivX Certified device that plays DivX video. ® ® ® ® To generate the registration code, locate the DivX VOD section in the device setup menu. Go to vod.divx.com with this code to complete the registration process and learn more about DivX VOD.

Manufactured under license from Dolby Laboratories. Dolby and the double-D symbol are trademarks of Dolby Laboratories. "BRAVIA" and are trademarks of Sony Corporation. TrackID is a trademark or registered trademark of Sony Ericsson Mobile Communications AB. Music and video recognition technology and related data are provided by Gracenote®.

Gracenote is the industry standard in music recognition technology and related content delivery. For more information, please visit www.gracenote.com. CD, DVD, Blu-ray Disc, and music and video-related data from Gracenote, Inc.

, copyright © 2000-present Gracenote. Gracenote Software, copyright © 2000present Gracenote. One or more patents owned by Gracenote apply to this product and service. See the Gracenote website for a nonexhaustive list of applicable Gracenote patents. Gracenote, CDDDB, MusicID, MediaVOCS, the Gracenote logo and logotype, and the "Powered by Gracenote" logo are either registered trademarks or trademarks of Gracenote in the United States and/or other countries. Opera® Browser from Opera Software ASA. Copyright 1995-2010 Opera Software ASA. All rights reserved. DiSeqCTM is a trademark of EUTELSAT. This TV supports DiSeqC 1.

0. This TV is not intended for controlling motorized antennas. Notes on Digital TV function · Any functions related to Digital TV () will only work in countries or areas where DVB-T (MPEG-2 and H.264/MPEG-4 AVC) digital terrestrial signals are broadcast or where you have access to a compatible DVB-C (MPEG2 and H.264/MPEG-4 AVC) cable service. Please confirm with your local dealer if you can receive a DVB-T signal where you live or ask your cable provider if their DVB-C cable service is suitable for integrated operation with this TV. · Your cable provider may charge a fee for their services, or require you to agree to its terms and conditions of business. · This TV set complies with DVB-T and DVB-C specifications, but compatibility with future DVB-T digital terrestrial and DVB-C digital cable broadcasts are not guaranteed. · Some Digital TV functions may not be available in some countries/areas and DVB-C cable may not operate correctly with some providers. For a list of compatible cable providers, refer to the support web site: <http://support.sony-europe.com/TV/DVBC/> · The "x" that appears in the model name corresponds to a numeric digit, related to design, colour or TV system. · Instructions about "Installing Wall Mount Bracket" are included within this TV's instructions manual. · The illustrations used in this manual may differ depending on your TV model. · The illustrations of the remote used in this manual are of the RM-ED044 unless otherwise stated.

· Before operating the TV, please read "Safety Information" (page 34). Retain this manual for future reference. For KDL-46/40/32EX729, KDL-46/40/32EX728, KDL-46/40/32EX727, KDL-46/40/32EX726, KDL-26/24/22EX325: Notice for Wireless Signal 1. Hereby, Sony, declares that this unit is in compliance with the essential requirements and other relevant provisions of Directive 1999/5/EC. To obtain the declaration of conformity (DoC) for R&TTE Directive, please access the following URL address.

<http://www.compliance.sony.de/> 2. Notice for customers: the following information is only applicable to equipment sold in countries applying EU directives. TV wireless system may be operated in following countries: Austria, Belgium, Bulgaria, Cyprus, Czech Republic, Denmark, Estonia, Finland, France, Germany, Greece, Hungary, 2 GB Iceland, Ireland, Italy, Latvia, Liechtenstein, Lithuania, Luxembourg, Malta, The Netherlands, Norway, Poland, Portugal, Slovak Republic, Romania, Slovenia, Spain, Sweden, Switzerland, Turkey, and The United Kingdom. This equipment can be operated in other non-European countries. Location of the identification label Labels for Model No., Production Date (month/year) and Power Supply rating (in accordance with applicable safety regulation) are located on the rear of the TV or package. Precautions Viewing the TV · Some people may experience discomfort (such as eye strain, fatigue, or nausea) while watching 3D video images or playing stereoscopic 3D games.

Sony recommends that all viewers take regular breaks while watching 3D video images or playing stereoscopic 3D games. The length and frequency of necessary breaks will vary from person to person. You must decide what works best. If you experience any discomfort, you should stop watching the 3D video images or playing stereoscopic 3D games until the discomfort ends; consult a doctor if you believe necessary. You should also review (i) the instruction manual of any other device or media used with this television and (ii) our website (<http://www.sony-europe.com/myproduct>) for the latest information. The vision of young children (especially those under six years old) is still under development. Consult your doctor (such as a pediatrician or eye doctor) before allowing young children to watch 3D video images or play stereoscopic 3D games. Adults should supervise young children to ensure they follow the recommendations listed above.

· Do not use, store, or leave the 3D Glasses or the battery near fire, or in places with a high temperature, e.g., in direct sunlight, or in sun-heated cars. · When using the simulated 3D function, please note that the displayed image is modified from the original due to the conversion done by this television. · View the TV in moderate light, as viewing the TV in poor light or during long period of time, strains your eyes. · When using headphones, adjust the volume so as to avoid excessive levels, as hearing damage may result. TV Wireless System Regulation Information For Customers in Italy s with respect to private use, by the Legislative Decree of 1.8.2003, no. 259 ("Code of Electronic Communications"). In particular Article 104 indicates when the prior obtainment of a general authorization is required and Art. 105 indicates when free use is permitted; s with respect to the supply to the public of the RLAN access to telecom networks and services (e.g. TV wireless system), by the Ministerial Decree 28.



[You're reading an excerpt. Click here to read official SONY BRAVIA KDL-40EX525 user guide](http://yourpdfguides.com/dref/3812107)
<http://yourpdfguides.com/dref/3812107>

5.2003, as amended, and Art. 25 (general authorization for electronic communications networks and services) of the Code of electronic communications For Customers in Norway Use of this radio equipment is not allowed in the geographical area within a radius of 20 km from the centre of Ny-Ålesund, Svalbard. For Customers in Cyprus The end user must register the RLAN (or WAS or WiFi) devices in the Department of Electronic Communications (P.I. 365/ 2008 and P.

I. 267/2007). P.I. 365/2008 is the Radiocommunications (Categories of Stations Subject to General Authorization and Registration) Order of 2008. P.I. 267/2007 is the General Authorization for the use of Radiofrequencies by Radio Local area Networks and by Wireless Access Systems, including Radio Local Area Networks (WAS/RLAN). LCD Screen · Although the LCD screen is made with high-precision technology and 99.99% or more of the pixels are effective, black dots may appear or bright points of light (red, blue, or green) may appear constantly on the LCD screen.

This is a structural property of the LCD screen and is not a malfunction. · Do not push or scratch the front filter, or place objects on top of this TV set. The image may be uneven or the LCD screen may be damaged. · If this TV set is used in a cold place, a smear may occur in the picture or the picture may become dark. This does not indicate a failure.

These phenomena disappear as the temperature rises. · Ghosting may occur when still pictures are displayed continuously. It may disappear after a few moments. · The screen and cabinet get warm when this TV set is in use. This is not a malfunction.

For Customers in France The WLAN (WiFi) feature of this LCD Digital Colour TV shall exclusively be used inside buildings. Any use of the WLAN (WiFi) feature of this LCD Digital Colour TV outside of the buildings is prohibited on the French territory. Please make sure that the WLAN (WiFi) feature of this LCD Digital Colour TV is disabled before any use outside of the buildings. (ART Decision 2002-1009 as amended by ART Decision 03-908, relating to radiofrequencies use restrictions). (Continued) 3 GB · The LCD screen contains a small amount of liquid crystal. Some fluorescent tubes used in this TV set also contain mercury (except for LED backlight LCD TV). Follow your local ordinances and regulations for disposal. Wireless Function of the unit · Do not operate this unit near medical equipment (pacemaker, etc.), as malfunction of the medical equipment may result. · Although this unit transmits/receives scrambled signals, be careful of unauthorised interception.

We cannot be responsible for any trouble as a result. Handling and cleaning the screen surface/cabinet of the TV set Be sure to unplug the mains lead connected to the TV set from mains socket before cleaning. To avoid material degradation or screen coating degradation, observe the following precautions. · To remove dust from the screen surface/ cabinet, wipe gently with a soft cloth. If dust is persistent, wipe with a soft cloth slightly moistened with a diluted mild detergent solution. · Do not spray water or detergent directly on the TV set. It may drip to the bottom of the screen or exterior parts, and may cause a malfunction. · Never use any type of abrasive pad, alkaline/acid cleaner, scouring powder, or volatile solvent, such as alcohol, benzene, thinner or insecticide. Using such materials or maintaining prolonged contact with rubber or vinyl materials may result in damage to the screen surface and cabinet material. ·

Periodic vacuuming of the ventilation openings is recommended to ensure to proper ventilation.

· When adjusting the angle of the TV set, move it slowly so as to prevent the TV set from moving or slipping off from its table stand. Disposal of waste batteries (applicable in the European Union and other European countries with separate collection systems) This symbol on the battery or on the packaging indicates that the battery provided with this product shall not be treated as household waste. On certain batteries this symbol might be used in combination with a chemical symbol. The chemical symbols for mercury (Hg) or lead (Pb) are added if the battery contains more than 0.0005% mercury or 0.004% lead. By ensuring these batteries are disposed of correctly, you will help prevent potentially negative consequences for the environment and human health which could otherwise be caused by inappropriate....

.....

.....

.....

.....

16 Selecting various functions and settings (Home Menu)

.....

.....

.....

.....

.....

.....

.. 18 Displaying Operating Instructions (i-Manual) ...

.....

.....

.....

.....

.....

.....

.....

.....

.....

20 Network Setup Preparing a wired network

.....

.....

.....

.....
.....
.....
.....

.....
.....
.....
.....

. 22 Preparing a wireless LAN....

.....
.....

.....
.....
.....
.....

.....
.....
.....
.....

.....
.....
.....

.... 22 Setting up the Internet connection

.....
.....
.....
.....

.....
.....
.....
.....

.....
.....
.....

... 23 If you cannot connect to the Internet.....

.....
.....
.....
.....

.....
.....
.....
.....

.....
.....

.... 24 Adjusting the server dit cloth on the work surface.

· Be sure the TV is on the vertical position before switching on. TV set must not powered on with LCD panel face down to avoid uneven picture uniformity. B For KDL-55/46/40/37/32EX72x, KDL-46/40HX72x, KDL-46/40/37/32EX52x, KDL-46/40/32CX52x, KDL-32EX42x ~ · Align the TV from the top, slide it in until the guide pins cannot be seen. B For KDL-26/24/22EX32x 3 Fix the TV to the Table-Top Stand according to the arrow marks that guide the screw holes using the supplied screws. B For KDL-55/46/40/37/32EX72x, KDL-46/40HX72x, KDL-46/40/37/32EX52x, KDL-46/40/32CX52x, KDL-32EX42x (Continued) 9 GB B For KDL-26/24/22EX32x 2: Adjusting the viewing angle of the TV This TV can be adjusted within the angles as illustrated. Angle adjustment (Swivel) (except KDL-26/24/22EX32x) ~ · When adjusting the angle, hold the stand with one hand to avoid having the stand slip or TV tip over. 20° 20° 20° 20° Angle adjustment (Tilt) (except KDL-46/40/32CX52x) ~ · Be careful not to pinch your fingers between the TV and stand when adjusting the angle. B For KDL-55/46/40/37/32EX72x, KDL-46/40HX72x, KDL-46/40/37/32EX52x, KDL-32EX42x 0° - 6° B For KDL-26/24/22EX32x 0° - 6° 10 GB ~ · Ensure that there are no objects in front of the TV. IR Sensor 3D Sync Transmitter (KDL-55/46/40/37/32EX72x, KDL-46/40HX72x only) Presence Sensor 3: Connecting

an antenna (aerial)/Set Top Box/ recorder (e.g.

DVD recorder) Connecting a Set Top Box/recorder (e.g. DVD recorder) with SCART · Do not expose the Presence Sensor to direct sunlight or other strong light, as malfunction may occur. Getting Started Set Top Box/recorder (e.g. DVD recorder) ~ · Right Angle Type Universal SCART Lead is recommended for this connection. · Screw the satellite connector softly with hand, do not use any tool. · TV must be switched off when connecting satellite antenna (aerial).

(Continued) 11 GB Connecting a Set Top Box/recorder (e.g.

DVD recorder) with HDMI 4: Connecting audio/video devices Set Top Box/recorder (e.g. DVD recorder) Recommendation of the F type plug The one based on the following drawing is recommended about the F type plug.



[You're reading an excerpt. Click here to read official SONY BRAVIA KDL-40EX525 user guide](http://yourpdfguides.com/dref/3812107)
<http://yourpdfguides.com/dref/3812107>

Projection of the inner wire from the connection part must be less than 1.5 mm.

Audio/video device 1.5 mm max. (Reference drawing of the F type plug) 12 GB 5: Preventing the TV from toppling over 6: Organising the AC power cord (mains lead)/ Bundling the cables B KDL-46/40/32CX52x AC power cord Getting Started B Except KDL-46/40/32CX52x ~ Before bundling the cables, remove the cable holder from the AC cover (see step 1 and 2). Reuse the cable holder (see step 3) to bundle the other cables (see step 4). Do not bundle the AC power cord (mains lead) together with other cables.

KDL-55/46/40/37/32EX72x, KDL-46/40HX72x, KDL-46/40/37/32EX52x, KDL-32EX42x 1 2 3 Install a wood screw (4 mm in diameter, not supplied) in the TV stand. Install a machine screw (M4 × 10, not supplied) into the screw hole of the TV. Tie the wood screw and the machine screw with a strong cord (not supplied). 1 2 3 KDL-26/24/22EX32x 4 1 2 3 4 * * When installing on the wall, attach the cable holder under the terminals. 13 GB 7: Performing the initial set-up Except KDL-46/40/ 32CX52x KDL-46/40/32CX52x Satellite Auto Tuning: The following procedures may be required depending on the area: 1 2 Please select "Preferred Satellite" or "General Satellite". For "Preferred Satellite", select your preferred operator. "Satellite Auto Tuning" automatically tunes in available satellite channels. Digital Satellite Equipment Control (DiSEqC) 1.0 management allows setting of up to four different channels. The following settings are independent for each connection.

To set-up DiSEqC input in the "DiSEqC Control", use "LNB Configuration". 1 2 Connect the TV to your AC power outlet (mains socket). Press 1 on the TV. @@@@Do not turn off the TV during this process. @@@@Previously-tuned programmes will be lost. @@@@Previously-tuned programmes will be lost. @@@@ For four satellite channels, DiSEqC control A, B, C, and D is required. "LNB Low Band Frequency" and "LNB High Band Frequency":

Specifies LNB frequency bands. Be sure to check your LNB documentation to set frequencies (normally appears as "L.O. frequency"). The default values are for a universal LNB. If your LNB can handle both bands (low and high), you can specify both. If it handles only one, specify low band. "22 kHz Tone": If your LNB is dual band (low and high bands), set to "Auto".

@@@ 13/18V: default. 14/19V: if LNB cable is over 60m long. Off: if an external power supply can be used.

@@Basic remote operations are explained here. @1 :/1 Press to turn the TV on and off from standby mode.

2 i-MANUAL Displays the built-in manual (i-Manual). @4 F/f/G/g/ Moves the on-screen cursor, and confirm the item. 5 OPTIONS Displays a list of convenient functions and menu shortcuts. The menu items vary based on the current input and/or content. @@@@The contents of "Settings" are displayed on the right. 2 Press F/f to select "Display". 3 Press to launch the menu. @@@@You can select equipment connected to the TV. Provides quick access to your frequently used and recently viewed items, such as TV channels, external inputs or your media files. Contains all of the necessary configurations to customise your TV settings.

Provides access to Widgets. Using Your BRAVIA TV Settings Widgets Applications Qriocity Internet Content Recommendations You can enjoy various applications such as "Music Search", "Internet Browser", etc. Enable access to the "Qriocity" online service. You can enjoy Internet content services. Presents recommendations for programmes you may like, based on your viewing history. You can enjoy timer recordings to a connected USB HDD device, and selection of recorded content to play. Recordings 19 GB Displaying Operating Instructions (i-Manual) Operating instructions are built into your BRAVIA TV and can be displayed on the screen. To learn more about your TV features, access your i-Manual with the touch of a button. 1 1 Press i-MANUAL. 2 2 Press F/f/G/g/ to select items.

To select items in the i-Manual 1 Press F/f to select an item. The contents in the item are displayed on the right as the second layer. 2 Press g to move to the second layer. 3 Press F/f to select an item from the second layer. A digest of the item is displayed on the right. If the third layer is available, repeat this step to display the digest of the item. 4 Press g to select an item. The content is displayed. 20 GB Description of the i-Manual screen Press G to go back to the previous page Press f to go to the next page Page number/Total page number Press RETURN to go back to the previous page Press to launch the function ~ This will be displayed only when the function is available. Using Your BRAVIA TV To use the bookmark The i-Manual has a bookmark function.

Pages can be bookmarked with coloured buttons, according to the instructions at the bottom of the screen. To access your registered bookmarks, go to the top page of the i-Manual and select "Bookmarks". To memorise the last displayed page i-Manual memorises the last displayed page. When in the i-Manual screen, press i-MANUAL to return to the TV screen. If you press i-MANUAL again, the information you saw last time appears. For viewing from the top page of the i-Manual, return to the top page according to the instructions on the screen, or press HOME and select "i-Manual" of "Settings" in the Home menu. ~ Last page memory is automatically reset when you switch the TV to standby mode. 21 GB Network Setup When you connect this TV to the Internet, you can enjoy multiple functions: displaying a photograph that shows its location on the map, enjoying Internet video, etc. For details on the functions, refer to the i-Manual. ~ You will need to contract with an Internet service provider to connect to the Internet.

Preparing a wireless LAN Wireless LAN Ready lets you easily access the Internet and your home network with the USB Wireless LAN Adapter UWA-BR100 (as of January 2010). By inserting the USB Wireless LAN Adapter into your TV's USB port, you can easily create a cable-free network. @@@@Check your wireless LAN environment using the following chart. Wireless LAN Secure Wireless LAN? @@@@Select "Wireless Set-up". @@@@Air Station OneTouch Secure System (AOSS). Most of the latest routers have this function. @@@@Select "Wireless Set-up". @@@@Follow the instructions on the set-up screen. Type 1: Follow the configuration for "Secured Network with Wi-Fi Protected Set-up (WPS)". Type 2: Follow the configuration for "Secured Network without Wi-Fi Protected Set-up (WPS)".

Type 3: Follow the configuration for "Unsecured Network with Any Type of Wireless LAN Router".



[You're reading an excerpt. Click here to read official SONY BRAVIA KDL-40EX525 user guide](http://yourpdfguides.com/dref/3812107)
<http://yourpdfguides.com/dref/3812107>

Type 4: Follow the configuration for "Wired network set-up". Type 1: Secured network with Wi-Fi Protected Set-up (WPS) The WPS standard makes security of a wireless home network as straightforward as pressing the WPS button on the wireless LAN router. Before setting up a wireless LAN, check the location of the WPS button on the router and verify how to use it. ~ · If you use WPS for network set-up, the security settings of the wireless LAN router activate, and any equipment previously connected to the wireless LAN in a non-secure status will be disconnected from the network.

In this case, activate the security settings of the disconnected equipment and then reconnect. Or, you can deactivate the security settings of the wireless LAN router, and then connect the equipment to a TV in a non-secure status. (Continued) 23 GB Type 3: Unsecured network with any type of wireless LAN router To set up a wireless LAN, SSID (wireless network name) will be required. If you cannot connect to the Internet Use the diagnosis to check possible causes for network connection failures, and settings. 1 2 3 4 Press HOME, then select > "Network" > "Network Set-up".

Select "Wireless Set-up". @@Follow the instructions on the set-up screen. 1 2 3 Press HOME, then select > "Network" > "Network Set-up". Select "View Network Status". Select "Check Connection". This may take a several minutes. You cannot cancel the diagnosis after selecting "Check Connection". ~ · Security key (WEP or WPA key) will not be required because you do not need to select any security method in this procedure. Adjusting the server display settings You can select home network servers to be displayed on the Home Menu. Up to 10 servers can be displayed in the Home Menu automatically.

Type 4: Wired network set-up Enter the respective alphanumeric values for your router if necessary. The items that need to be set (e.g. IP Address, Subnet Mask, DHCP) may differ depending on the Internet service provider or router. For details, refer to the instruction manuals provided by your Internet service provider, or those supplied with the router. 1 2 3 Press HOME, then select > "Network" > "Home Network Setup". Select "Server Display Settings". Select the server you want to display on the Home Menu, and adjust the settings. 1 2 3 4 Press HOME, then select > "Network" > "Network Set-up". Select "Wired Set-up".

Select "Auto" to set the IP Address and proxy server automatically, or "Custom" to set them manually. Follow the instructions on the set-up screen. If you cannot connect to your home network The TV detects if the server is being correctly recognised when you cannot connect it to your home network. If the diagnostic results indicate a failure, check possible causes, and network connections and settings. 1 2 Press HOME, then select > "Network" > "Home Network Setup".

Select "Server Diagnostics". The server diagnostic starts. When the server diagnostic is complete, the diagnostic result list appears. Viewing the network status You can confirm your network status. 1 2 Press HOME, then select > "Network" > "Network Set-up".

Select "View Network Status". 24 GB Additional Information Troubleshooting When the 1 (standby) indicator is flashing, count how many times it flashes (interval time is three seconds). Press 1 on the TV to turn it off, disconnect the AC power cord (mains lead), and inform your dealer or Sony service centre of how the indicator flashes (number of flashes). When the 1 (standby) indicator is not flashing, check the items in the tables as follows. Also refer to "Troubleshooting" in the i-Manual. If the problem persists, have your TV serviced by qualified service personnel. Condition Explanation/Solution Additional Information There is no picture (screen · Check the antenna (aerial)/cable connection. · Connect the TV to the AC power (mains), and press 1 on the TV. is dark) and no sound. · If the 1 (standby) indicator lights up in red, press "/1.

Tiny black points and/or · The screen is composed of pixels. Tiny black points and/or bright bright points appear on the points (pixels) on the screen do not indicate a malfunction. screen. Some programmes cannot · Check the antenna (aerial) or dish. · The satellite cable might be short-circuited or there might be be tuned. connection problems of the cable. Check the cable and connection and then turn the TV off with the Mains power On / Off switch, and turn it on again. · The frequency you entered is out of range. Consult the received satellite broadcasting company. The TV turns off automatically (the TV enters standby mode).

· Check if the "Sleep Timer" is activated, or confirm the "Duration" setting of "On Timer". · Check if the "Idle TV Standby" is activated. · Check if the "Presence Sensor" is activated. When no viewer is detected in front of the TV for a preset time, the picture automatically turns off, while leaving only the TV sound on. Additionally, after 30 minutes in picture off mode, the TV will switch to standby mode. · Replace the batteries. · Your TV may be in SYNC mode. Press SYNC MENU, select "TV Control" and then select "Home (Menu)" or "Options" to control the TV. · Enter 9999 for the PIN code. (PIN code 9999 is always accepted.

) The remote does not function. The "Parental Lock" password has been forgotten. The TV surrounds become · When the TV is used for an extended period, the TV surrounds become warm. warm. You may feel hot when touching there by the hand. 25 GB Specifications System Panel system TV system LCD (Liquid Crystal Display) Panel Analogue: Depending on your country/area selection: B/G/H, D/K, L, I, M Digital: DVB-T/DVB-C Satellite: DVB-S/DVB-S2 Analogue: PAL, PAL60 (only video input), SECAM, NTSC3.58, NTSC4.43 (only video input) Digital: MPEG-2 MP@ML/HL, H.264/MPEG-4 AVC MP/HP@L4 Analogue: VHF: E2E12/UHF: E21E69/CATV: S1S20/HYPER: S21S41 D/K: R1R12, R21R69/L: F2F10, BQ, F21F69/I: UHF B21B69/M: A2-A13, A14-A79 Digital: VHF/UHF Satellite: IF Frequency 950-2150 MHz 10 W + 10 W (KDL-55/46/40/37/32EX72x, KDL-46/40HX72x, KDL-46/40/37/32EX52x, KDL-46/40/32CX52x, KDL-32EX42x) 8 W + 8 W (KDL-26/24/22EX32x) 75 ohm external terminal for VHF/UHF Female F-Type Connector IEC169-24, 75 ohm. DiSeqC 1.

0, LNB 13V/18V & 22 KHz tone 21-pin scart connector (CENELEC standard) including audio/video input, RGB input and TV audio/video output. Video input (phono jack) Supported formats: 1080p, 1080i, 720p, 576p, 576i, 480p, 480i Audio input (phono jacks) Video: 1080/24p/30p, 1080p, 1080i, 720/24p/30p, 720p, 576p, 576i, 480p, 480i Audio: Two channel linear PCM: 32, 44.



[You're reading an excerpt. Click here to read official SONY BRAVIA](#)

[KDL-40EX525 user guide](#)

<http://yourpdfguides.com/dref/3812107>

1 and 48 kHz, 16, 20 and 24 bits, Dolby Digital Analogue audio input (minijack) (HDMI IN4 only) PC Input ARC (Audio Return Channel) (HDMI IN1 only) Colour/video system Channel coverage Sound output Input/Output jacks Antenna (aerial) cable Satellite antenna (aerial) / AV2 / COMPONENT IN AV1 HDMI IN1, 2, 3, 4 (except KDL-26/24/ 22EX32x) Video: 1080/24p/30p, 1080p, 1080i, 720/24p/30p, 720p, 576p, 576i, 480p, 480i HDMI IN1, 2 (KDL-26/24/22EX32x only) Audio: Two channel linear PCM: 32, 44.1 and 48 kHz, 16, 20 and 24 bits, Dolby Digital Analogue audio input (minijack) (HDMI IN2 only) PC Input ARC (Audio Return Channel) (HDMI IN1 only) DIGITAL AUDIO OUT Digital optical jack (Two channel linear PCM, Dolby Digital) (OPTICAL) AUDIO OUT / i PC IN Audio output (phono jacks) Headphones jack PC Input (Mini D-sub 15-pin) PC audio input (minijack) USB port (support HDD Rec) (KDL-26/24/22EX32x only) 1, 2 (HDD REC) (except KDL-26/24/ 22EX32x) LAN USB port, USB HDD device port (2 only) CAM (Conditional Access Module) slot 10BASE-T/100BASE-TX connector (Depending on the operating environment of the network, connection speed may differ. 10BASE-T/100BASE-TX communication rate and communication quality are not guaranteed for this TV.) 26 GB Model name KDLPower and others Power requirements Energy Efficiency Class Screen size (measured diagonally) Power in "Home"/ consumption "Standard" mode in "Shop"/ "Vivid" mode Average annual energy consumption*1 Standby power consumption*2 55EX72x 220 V 240 V AC, 50 Hz A Approx. 138.8 cm/ 55 inches 113 W 46HX72x 46EX72x 46EX52x A Approx. 116.8 cm/ 46 inches 83. 0 W A Approx. 116.8 cm/ 46 inches 81.0 W A Approx. 116. 8 cm/ 46 inches 68.0 W 177 W 165 kWh 0.25 W (15 W in software / EPG update mode) 153 W 115 kWh 0.25 W (15 W in software / EPG update mode) 133 W 118 kWh 0.25 W (15 W in software / EPG update mode) 114 W 99 kWh 0. 3 W (13 W in software / EPG update mode) 1,920 dots (horizontal) × 1,080 lines (vertical) Display resolution Dimensions (Approx.) (w × h × d) 126.9 × 79.9 × 31.5 cm 107.8 × 69.0 × 26.0 cm with Table-Top Stand 126.9 × 76.9 × 4. 1 cm 107.8 × 66.0 × 4.2 cm without Table-Top Stand Mass (Approx.) 25.4 kg 18.8 kg with Table-Top Stand 20.2 kg 14.4 kg without Table-Top Stand See "Checking the accessories" (page 8). Supplied accessories Wall-Mount Bracket: SU-WL500 Optional accessories 107. 8 × 69.0 × 26.0 cm 107.8 × 66.0 × 4. 2 cm 17.9 kg 14.3 kg 107.8 × 69.0 × 26. 0 cm 107.8 × 66.0 × 4.2 cm Additional Information 17.8 kg 14.2 kg 3D Glasses: TDG-BR250/TDG-BR200/TDG-BR100/TDG-BR50 (KDL-55/46EX72x, KDL-46HX72x) USB Wireless LAN Adapter Operating temperature Operating humidity Model name KDLPower and others Power requirements Energy Efficiency Class Screen size (measured diagonally) Power in "Home"/ consumption "Standard" mode 0 °C 40 °C 10 % 80 % RH (non-condensing) 46CX52x 220 V 240 V AC, 50 Hz C Approx. 116.8 cm/ 46 inches 128 W 40HX72x 40EX72x 40EX52x B Approx. 101.6 cm/ 40 inches 85. 0 W A Approx. 101.6 cm/ 40 inches 64.0 W A Approx. 101.6 cm/ 40 inches 65.0 W 204 W in "Shop"/ "Vivid" mode 135 W 118 kWh 0.25 W (14 W in software / EPG update mode) 121 W 93 kWh 0.25 W (15 W in software / EPG update mode) 113 W 95 kWh 0.3 W (13 W in software / EPG update mode) Average annual energy consumption*1 Standby power consumption*2 Display resolution with Table-Top Stand without Table-Top Stand Mass (Approx.) with Table-Top Stand without Table-Top Stand Supplied accessories Optional accessories 187 kWh 0.25 W (16 W in software / EPG update mode) 1,920 dots (horizontal) × 1,080 lines (vertical) Dimensions (Approx.) (w × h × d) 112.2 × 71.2 × 27. 5 cm 112.2 × 68.2 × 7.4 cm 94.3 × 61. 5 × 21.0 cm 94.3 × 58.6 × 4.2 cm 94.3 × 61.6 × 25.0 cm 94.3 × 58.6 × 4. 2 cm 94.3 × 61.6 × 25.0 cm 94.3 × 58.6 × 4.2 cm 20.7 kg 17.1 kg 15.4 kg 11. 6 kg 14.4 kg 11.2 kg 14.4 kg 11.2 kg See "Checking the accessories" (page 8). Wall-Mount Bracket: SU-WL500 3D Glasses: TDG-BR250/TDG-BR200/TDG-BR100/TDG-BR50 (KDL-40HX72x, KDL-40EX72x) USB Wireless LAN Adapter 0 °C 40 °C 10% 80% RH (non-condensing) Operating temperature Operating humidity (Continued) 27 GB Model name KDLPower and others Power requirements Energy Efficiency Class Screen size (measured diagonally) Power in "Home"/ consumption "Standard" mode 40CX52x 220 V 240 V AC, 50 Hz C Approx. 101.6 cm/ 40 inches 120 W 37EX72x 37EX52x 32EX72x A Approx. 94.0 cm/ 37 inches 56. 0 W A Approx. 94.0 cm/ 37 inches 56.0 W B Approx. 80.1 cm/ 32 inches 59.0 W 181 W in "Shop"/ "Vivid" mode 105 W 82 kWh 0.25 W (17 W in software / EPG update mode) 98 W 78 kWh 0.3 W (16.5 W in software / EPG update mode) 101 W 86 kWh 0. 25 W (16 W in software / EPG update mode) Average annual energy consumption*1 Standby power consumption*2 Display resolution with Table-Top Stand without Table-Top Stand Mass (Approx.) with Table-Top Stand without Table-Top Stand Supplied accessories Optional accessories 175 kWh 0.25 W (15 W in software / EPG update mode) 1,920 dots (horizontal) × 1,080 lines (vertical) Dimensions (Approx.) (w × h × d) 99.1 × 63.6 × 25.0 cm 99.1 × 60.6 × 7.1 cm 87. 8 × 57.9 × 25.0 cm 87.8 × 54.9 × 4. 2 cm 87.7 × 57.9 × 25.0 cm 87.7 × 54. 9 × 4.2 cm 75.5 × 51.0 × 21.6 cm 75.5 × 48.0 × 4.2 cm 16.3 kg 12.9 kg 13. 3 kg 10.1 kg 13.3 kg 10.1 kg 10.4 kg 7.9 kg See "Checking the accessories" (page 8). Wall-Mount Bracket: SU-WL500 3D Glasses: TDG-BR250/TDG-BR200/TDG-BR100/TDG-BR50 (KDL-37/32EX72x) USB Wireless LAN Adapter 0 °C 40 °C 10% 80% RH (non-condensing) Operating temperature Operating humidity Model name KDLPower and others Power requirements Energy Efficiency Class Screen size (measured diagonally) Power in "Home"/ consumption "Standard" mode 32EX52x 220 V 240 V AC, 50 Hz B Approx. 80.1 cm/32 inches 56.0 W 32EX42x 32CX52x B Approx. 80.0 cm/32 inches 56.0 W C Approx. 80.1 cm/32 inches 73. 0 W 88 W in "Shop"/ "Vivid" mode 88 W 82 kWh 0.3 W (17 W in software / EPG update mode) 1,366 dots (horizontal) × 768 lines (vertical) 75.5 × 51.0 × 21.6 cm 75. 5 × 48.0 × 4.2 cm 112 W 107 kWh 0.25 W (15 W in software / EPG update mode) 1,920 dots (horizontal) × 1,080 lines (vertical) 79.9 × 53.2 × 23.0 cm 79.9 × 50.2 × 7.0 cm Average annual energy consumption*1 Standby power consumption*2 Display resolution 82 kWh 0. 3 W (17 W in software / EPG update mode) 1,920 dots (horizontal) × 1,080 lines (vertical) 75.



[You're reading an excerpt. Click here to read official SONY BRAVIA KDL-40EX525 user guide](#)

5 × 51.0 × 21.6 cm 75.5 × 48.0 × 4.2 cm Dimensions (Approx.) (w × h × d) with Table-Top Stand without Table-Top Stand Mass (Approx.) with Table-Top Stand without Table-Top Stand Supplied accessories Optional accessories Operating temperature Operating humidity 10.2 kg 7.7 kg 10.2 kg 7.7 kg 11.4 kg 8.7 kg See "Checking the accessories" (page 8).

Wall-Mount Bracket: SU-WL500 USB Wireless LAN Adapter 0 °C 40 °C 10% 80% RH (non-condensing) 28 GB Model name KDLPower and others Power requirements Energy Efficiency Class Screen size (measured diagonally) Power in "Home"/consumption "Standard" mode 26EX32x 220 V 240 V AC, 50 Hz B Approx. 66.1 cm/ 26 inches 38.0 W 24EX32x 22EX32x B Approx. 61.0 cm/ 24 inches 35.0 W B Approx. 54.8 cm/ 22 inches 32.0 W 63 W in "Shop"/ "Vivid" mode 62 W 51 kWh 0.35 W (13 W in software / EPG update mode) 1,920 dots (horizontal) × 1,080 lines (vertical) 58.3 × 39.1 × 18.2 cm 58.3 × 37.6 × 4.2 cm Average annual energy consumption*1 Standby power consumption*2 Display resolution 55 kWh 0.35 W (13 W in software / EPG update mode) 1,366 dots (horizontal) × 768 lines (vertical) 52.9 × 36.2 × 17.2 cm 52.9 × 34.7 × 4.2 cm Dimensions (Approx.) (w × h × d) with Table-Top Stand without Table-Top Stand Mass (Approx.) with Table-Top Stand without Table-Top Stand Supplied accessories Optional accessories Operating temperature Operating humidity 7.2 kg 6.1 kg 6.1 kg 5.1 kg 4.1 kg Additional Information See "Checking the accessories" (page 8). Wall-Mount Bracket: SU-WL100 USB Wireless LAN Adapter 0 °C 40 °C 10% 80% RH (non-condensing) *1 Energy consumption per year, based on the power consumption of the television operating 4 hours per day for 365 days. The actual energy consumption will depend on how the television is used. *2 Specified standby power is reached after the TV finishes necessary internal processes. Design and specifications are subject to change without notice. 29 GB Installing the Accessories (Wall-Mount Bracket) To Customers: When using the SU-WL500 and SU-WL100 Wall-Mount Bracket, the space between the wall and the TV will be 6 cm. Use this space to route cables to the TV.

6 cm Wall For product protection and safety reasons, Sony strongly recommends that installing of your TV be performed by Sony dealers or licensed contractors. Do not attempt to install it yourself. To Sony Dealers and Contractors: Provide full attention to safety during the installation, periodic maintenance and examination of this product. Your TV can be installed using the SU-WL500 (page 31) and SU-WL100 (page 31) Wall-Mount Bracket (sold separately). Refer to the Instructions supplied with the Wall-Mount Bracket to properly carry out the installation. Refer to "Detaching the Table-Top Stand from the TV" (page 9). Sufficient expertise is required for installing this product, especially to determine the strength of the wall for withstanding the TV's weight. Be sure to entrust the attachment of this product to the wall to Sony dealers or licensed contractors and pay adequate attention to safety during the installation. Sony is not liable for any damage or injury caused by mishandling or improper installation. When installing the TV on the wall, remove the screws from the rear of the TV.

The screws and number of screws are available depending on the TV model. (They are fastened in the screw holes for wall mounting.) Be sure to store the removed screws in a safe place, keeping them away from children. B For KDL-55EX72x B For KDL-46/40HX72x, KDL-46/40/37/ 32EX72x, KDL-46/40/37/32EX52x, KDL-32EX42x × 4 2 × 2 × 2 × Soft cloth Soft cloth ~ When removing the Table-Top Stand from the TV, lay the display face down on a stable work surface that is larger than the TV. To prevent damaging the surface of the LCD display, make sure to place a soft cloth on the work surface. 30 GB SU-WL500, SU-WL100 For KDL-55/46/40/37/32EX72x, KDL-46/40HX72x, KDL-46/40/37/32EX52x, KDL-46/40/32CX52x, KDL-32EX42x SU-WL500 Screw (+PSW 6 × 16) For KDL-26/24/22EX32x SU-WL100 Screw (+PSW 4 × 12) Mounting Hook Mounting Hook × 4 Additional Information Soft cloth Soft cloth ~ Attach the Mounting Hook using the four screws supplied with the Wall-Mount Bracket. When attaching the Table-Top Stand again, be sure to fasten the screws (previously removed) to the original holes on the rear of the TV. Screw and Hook locations diagram/table Model Name KDL55EX72x 46HX72x/46EX72x/46EX52x 46CX52x 40HX72x/40EX72x/40EX52x 40CX52x 37EX72x/37EX52x 32EX72x/32EX52x/32EX42x/32CX52x Screw location SU-WL500 e, j e, j d, g e, j d, g e, j e, g Hook location SU-WL500 b b b b b c SU-WL100 26EX32x 24EX32x 22EX32x a a b (Continued) 31 GB SU-WL500 Screw location When installing the Mounting Hook on the TV. Hook location When installing the TV onto the Base Bracket. a b c SU-WL100 Hook location When installing the TV onto the Base Bracket.

a b 32 GB TV installation dimensions table 1 SU-WL500 A E F C B D H G Screen centre point 2 SU-WL100 A E F Additional Information 125 B C G H D Screen centre point Unit: cm Model Name KDLDisplay dimensions A B 76.9 66.0 66.0 66.0 68.2 58.6 58.6 58.6 60.6 54.9 54.9 48.0 48.0 50.2 40.6 37.6 34.7 Screen centre dimension C 6.5 12.0 12.0 12.0 8.4 15.7 15.7 15.7 12.2 17.5 17.5 16.1 16.1 17.2 7.8 9.5 10.8 Length for each mounting angle Angle (0°) D 46.5 46.5 46.5 46.5 43.2 46.5 46.5 43.2 46.5 41.6 41.6 43.2 29.5 29.5 29.5 Angle (20°) E 9.0 9.1 9.1 9.1 13.4 9.1 9.1 13.4 9.1 9.1 9.1 13.0 9.5 9.4 9.3 F 32.2 28.6 28.6 28.6 34.5 26.1 26.1 26.0 31.9 24.8 24.7 24.1 27.9 20.4 19.3 18.2 G 71.8 61.5 61.6 61.5 64.5 54.6 54.6 54.5 57.0 51.1 51.0 44.6 44.6 47.3 37.4 34.6 31.9 H 47.2 47.1 47.2 47.2 45.5 47.1 47.2 47.2 45.5 47.2 47.1 42.7 42.7 45.4 26.3 27.6 27.6 I SU-WL500 126.8 107.8 46HX72x 107.8 46EX72x 107.8 46EX52x 112.2 46CX52x 94.3 40HX72x 94.3 40EX72x 94.3 40EX52x 99.1 40CX52x 87.8 37EX72x 87.7 37EX52x 75.5 32EX72x 32EX52x/ 75.5 32EX42x 79.9 32CX52x 2 SU-WL100 63.1 26EX32x 58.3 24EX32x 52.9 22EX32x Figures in the table may differ slightly depending on the installation. WARNING The wall that the TV will be installed should be capable of supporting a weight of at least four times that of the TV. Refer to "Specifications" (page 26-29) for its weight. (Continued) 33 GB Safety Information Installation/Set-up Install and use the TV set in

accordance with the instructions as follows in order to avoid any risk of fire, electrical shock or damage and/or injuries.



[You're reading an excerpt. Click here to read official SONY BRAVIA
KDL-40EX525 user guide
http://yourpdfguides.com/dref/3812107](http://yourpdfguides.com/dref/3812107)

Ventilation · Never cover the ventilation holes or insert anything in the cabinet. · Leave space around the TV set as shown below. · It is strongly recommended that you use a Sony wall-mount bracket in order to provide adequate air-circulation. Mains lead Handle the mains lead and socket as follows in order to avoid any risk of fire, electrical shock or damage and/or injuries: Use only mains leads supplied by Sony, not other suppliers. Insert the plug fully into the mains socket.

Operate the TV set on a 220-240 V AC supply only. When wiring cables, be sure to unplug the mains lead for your safety and take care not to catch your feet on the cables. @@Keep the mains lead away from heat sources. Unplug the mains plug and clean it regularly. @@· Place the TV set on a stable, level surface.

@@@The supplied screws are designed so that they are 8 mm to 12 mm in length when measured from the attaching surface of the mounting hook. The diameter and length of the screws differ depending on the Wall-mount bracket model. Use of screws other than those supplied may result in internal damage to the TV set or cause it to fall, etc. 8 mm - 12 mm 10 cm Leave at least this space around the set. Installed with stand 30 cm 10 cm 10 cm 6 cm Notes Leave at least this space around the set. @@ Do not place the TV set on a shelf, rug, bed or in a closet. @@ Do not install the TV set as shown below. Air circulation is blocked. · Do not use the supplied mains lead on any other equipment. · Do not pinch, bend, or twist the mains lead excessively.

The core conductors may be exposed or broken. · Do not modify the mains lead. · Do not put anything heavy on the mains lead. @@· Do not connect too many appliances to the same mains socket. @@· Two or three people are needed to transport a large TV set. · When transporting the TV set by hand, hold it as shown in the illustration. Do not put stress on the LCD panel and the frame around the screen. KDL-26/24/22EX32x Location: Wall Wall · Outdoors (in direct sunlight), at the seashore, on a ship or other vessel, inside a vehicle, in medical institutions, unstable locations, near water, rain, moisture or smoke. · If the TV is placed in the changing room of a public bath or hot spring, the TV may be damaged by airborne sulfur, etc. KDL-55/46/40/37/32EX72x, KDL-46/40HX72x, KDL-46/40/37/32EX52x, KDL-46/40/32CX52x, KDL-32EX42x · For best picture quality, do not expose the screen to direct illumination or sunlight.

· Avoid moving the TV from a cold area to a warm area. Sudden room temperature changes may cause moisture condensation. This may cause the TV to show poor picture and/or poor colour. Should this occur, allow moisture to evaporate completely before powering the TV on. · When transporting the TV set, do not subject it to jolts or excessive vibration.

· When transporting the TV set for repairs or when moving, pack it using the original carton and packing material. 34 GB Environment: · Places that are hot, humid, or excessively dusty; where insects may enter; where it might be exposed to mechanical vibration, near flammable objects (candles, etc). The TV set shall not be exposed to dripping or splashing and no objects filled with liquids, such as vases, shall be placed on the TV. · Do not place the TV in a humid or dusty space, or in a room with oily smoke or steam (near cooking tables or humidifiers). Fire, electric shock, or warping may result.

For children · Do not allow children to climb on the TV set. · Keep small accessories out of the reach of children, so that they are not mistakenly swallowed. If the following problems occur... Turn off the TV set and unplug the mains lead immediately if any of the following problems occur. Ask your dealer or Sony service centre to have it checked by qualified service personnel. · Do not install the TV in places subject to extreme temperature such as in direct sunlight, near a radiator or a heating vent. The TV may overheat in such condition which can cause deformation of the enclosure and/or TV malfunction. When: Mains lead is damaged.

Poor fitting of mains socket. TV set is damaged by being dropped, hit or having something thrown at it. Any liquid or solid object falls through openings in the cabinet. Warning To prevent the spread of fire, keep candles or other open flames away from this product at all time. Additional Information Situation: · Do not use when your hands are wet, with the cabinet removed, or with attachments not recommended by the manufacturer. Disconnect the TV set from mains socket and aerial during lightning storms. · Do not install the TV so that it sticks out into an open space. Injury or damage from a person or object bumping into the TV may result. Broken pieces: · Do not throw anything at the TV set. The screen glass may break by the impact and cause serious injury. · If the surface of the TV set cracks, do not touch it until you have unplugged the mains lead. Otherwise electric shock may result. When not in use · If you will not be using the TV set for several days, the TV set should be disconnected from the mains for environmental and safety reasons. · As the TV set is not disconnected from the mains when the TV set is just turned off, pull the plug from the mains to disconnect the TV set completely. · However, some TV sets may have features that require the TV set to be left in standby to work correctly.

35 GB For useful information about Sony products 4-269-996-E3(1) © 2011 Sony Corporation .



[You're reading an excerpt. Click here to read official SONY BRAVIA KDL-40EX525 user guide](http://yourpdfguides.com/dref/3812107)
<http://yourpdfguides.com/dref/3812107>