



Your PDF Guides

You can read the recommendations in the user guide, the technical guide or the installation guide for SONY BDP-S5200. You'll find the answers to all your questions on the SONY BDP-S5200 in the user manual (information, specifications, safety advice, size, accessories, etc.). Detailed instructions for use are in the User's Guide.

User manual SONY BDP-S5200
User guide SONY BDP-S5200
Operating instructions SONY BDP-S5200
Instructions for use SONY BDP-S5200
Instruction manual SONY BDP-S5200

SONY

4-78-203-41(1)

Blu-ray Disc™ /
DVD Player

Operating Instructions

Thank you for your purchase. Before using this
player, please read these instructions carefully.

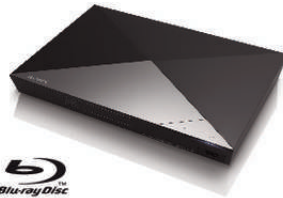
Getting Started

Playback

Internet

Settings and Adjustments

Additional Information



BDP-S1200/BDP-S3200/BDP-S4200/BDP-S5200



[You're reading an excerpt. Click here to read official SONY BDP-S5200 user guide](http://yourpdfguides.com/dref/5580454)

<http://yourpdfguides.com/dref/5580454>

Manual abstract:

Refer servicing to qualified personnel only. The mains lead must be changed only at a qualified service shop. @@@@If the plug supplied with this equipment has a detachable fuse cover, be sure to attach the fuse cover after you change the fuse. Never use the plug without the fuse cover. If you should lose the fuse cover, please contact your nearest Sony service station. CAUTION The use of optical instruments with this product will increase eye hazard. As the laser beam used in this Blu-ray Disc/DVD player is harmful to eyes, do not attempt to disassemble the cabinet. Refer servicing to qualified personnel only. Disposal of Old Electrical & Electronic Equipment (Applicable in the European Union and other European countries with separate collection systems) This symbol on the product or on its packaging indicates that this product shall not be treated as household waste. Instead it shall be handed over to the applicable collection point for the recycling of electrical and electronic equipment.

By ensuring this product is disposed of correctly, you will help prevent potential negative consequences for the environment and human health, which could otherwise be caused by inappropriate waste handling of this product. The recycling of materials will help to conserve natural resources. For more detailed information about recycling of this product, please contact your local Civic Office, your household waste disposal service or the shop where you purchased the product. This label is located on the laser protective housing inside the enclosure. This appliance is classified as a CLASS 1 LASER product.

The CLASS 1 LASER PRODUCT MARKING is located on the rear exterior. 2 BDP-S1200/BDP-S3200/BDP-S4200/BDP-S5200 4-476-203-41(1) C:\Users\fle\Desktop\SD130008\DATA\4476203411_GB\020WAR.fm master page=right Disposal of waste batteries (applicable in the European Union and other European countries with separate collection systems) This symbol on the battery or on the packaging indicates that the battery provided with this product shall not be treated as household waste. On certain batteries this symbol might be used in combination with a chemical symbol. The chemical symbols for mercury (Hg) or lead (Pb) are added if the battery contains more than 0.

0005% mercury or 0.004% lead. By ensuring these batteries are disposed of correctly, you will help prevent potentially negative consequences for the environment and human health which could otherwise be caused by inappropriate waste handling of the battery. The recycling of the materials will help to conserve natural resources. In case of products that for safety, performance or data integrity reasons require a permanent connection with an incorporated battery, this battery should be replaced by qualified service staff only. To ensure that the battery will be treated properly, hand over the product at end-of-life to the applicable collection point for the recycling of electrical and electronic equipment. For all other batteries, please view the section on how to remove the battery from the product safely. Hand the battery over to the applicable collection point for the recycling of waste batteries. For more detailed information about recycling of this product or battery, please contact your local Civic Office, your household waste disposal service or the shop where you purchased the product. This product has been manufactured by or on behalf of Sony Corporation, 1-7-1 Konan Minatoku Tokyo, 108-0075 Japan.

Inquiries related to product compliance based on European Union legislation shall be addressed to the authorized representative, Sony Deutschland GmbH, Hedelfinger Strasse 61, 70327 Stuttgart, Germany. For any service or guarantee matters, please refer to the addresses provided in the separate service or guarantee documents. Precautions • This unit operates on 220 V - 240 V AC, 50/60 Hz. Check that the unit's operating voltage is identical with your local power supply. • Install this unit so that the mains lead can be unplugged from the wall socket immediately in the event of trouble. 3 BDP-S1200/BDP-S3200/BDP-S4200/BDP-S5200 4-476-203-41(1) C:\Users\fle\Desktop\SD130008\DATA\4476203411_GB\020WAR.fm master page=left Precautions This equipment has been tested and found to comply with the limits set out in the EMC Directive using a connection cable shorter than 3 metres. On placement • Place the player in a location with adequate ventilation to prevent heat build-up in the player. • To reduce the risk of fire, do not cover the ventilation opening of the appliance with newspapers, tablecloths, curtains, etc. • Do not expose the appliance to naked flame sources (for example, lighted candles).

• Do not install this player in a confined space, such as a bookshelf or similar unit. • Do not place the player outdoors, in vehicles, on ships, or on other vessels. • If the player is brought directly from a cold to a warm location, or is placed in a very damp room, moisture may condense on the lenses inside the player. Should this occur, the player may not operate properly. In this case, remove the disc and leave the player turned on for about half an hour until the moisture evaporates.

• Do not install the player in an inclined position. It is designed to be operated in a horizontal position only. • Do not place metal objects in front of the front panel. It may limit reception of radio waves. • Do not place the player in a place where medical equipment is in use.

It may cause a malfunction of medical instruments. • If you use a pacemaker or other medical device, consult your physician or the manufacturer of your medical device before using the wireless LAN function. • This player should be installed and operated with a minimum distance of at least 20 cm or more between the player and a person's body (excluding extremities: hands, wrists, feet and ankles). • Do not place heavy or unstable objects on the player. • Do not place any objects other than discs on the disc tray. Doing so may cause damage to the player or the object. • Take out any discs from the tray when you move the player. If you don't, the disc may be damaged. • Disconnect the AC power cord (mains lead) and all other cables from the player when you move the player. On power sources • The player is not disconnected from the AC power source (mains) as long as it is connected to the wall outlet, even if the player itself has been turned off.

• Disconnect the player from the wall outlet if you are not going to use the player for a long time. To disconnect the AC power cord (mains lead), grasp the plug itself; never pull the cord. • Observe following points to prevent the AC power cord (mains lead) being damaged. Do not use the AC power cord (mains lead) if it is damaged, as doing so may result in an electric shock or fire. – Do not pinch the AC power cord (mains lead) between the player and wall, shelf, etc. – Do not put anything heavy on the AC power cord (mains lead) or pull on the AC power cord (mains lead) itself.



[You're reading an excerpt. Click here to read official SONY BDP-S5200 user guide](http://yourpdfguides.com/dref/5580454)

<http://yourpdfguides.com/dref/5580454>

On AC adaptor • Use the supplied AC adaptor for this player, as other adaptors may cause a malfunction. • Do not disassemble or reverse-engineer. • Do not confine the AC adaptor in a closed place such as a bookshelf or an AV cabinet. • Do not connect the AC adaptor to a traveler's electric transformer, which may generate heat and cause a malfunction.

• Do not drop or apply shock. 4 BDP-S1200/BDP-S3200/BDP-S4200/BDP-S5200 4-476-203-41(1) C:\Users\fle\Desktop\SD130008\DATA\4476203411_GB\020WAR.fm master page=right On adjusting volume Do not turn up the volume while listening to a section with very low level inputs or no audio signals. Your ears and the speakers may be damaged when the sound level reaches the peak. On watching 3D video images (BDP-S4200/S5200 only) Some people may experience discomfort (such as eye strain, fatigue, or nausea) while watching 3D video images.

Sony recommends that all viewers take regular breaks while watching 3D video images. The length and frequency of necessary breaks will vary from person to person. You must decide what works best. If you experience any discomfort, you should stop watching the 3D video images until the discomfort ends; consult a doctor if you believe necessary. You should also review (i) the instruction manual and/or the caution message of any other device used with, or Blu-ray Disc contents played with this product and (ii) our website (<http://www.sony-europe.com/myproduct/>) for the latest information. The vision of young children (especially those under six years old) is still under development. Consult your doctor (such as a pediatrician or eye doctor) before allowing young children to watch 3D video images. Adults should supervise young children to ensure they follow the recommendations listed above. On cleaning Clean the cabinet, panel, and controls with a soft cloth. Do not use any type of abrasive pad, scouring powder or solvent such as alcohol or benzine. On cleaning discs, disc/lens cleaners Do not use cleaning discs or disc/lens cleaners (including wet or spray types). These may cause the apparatus to malfunction. On replacement of parts In the events that this player is repaired, repaired parts may be collected for reuse or recycling purposes.

On connecting to the HDMI OUT jack Observe the following as improper handling may damage the HDMI OUT jack and the connector. • Carefully align the HDMI OUT jack on the rear of the player and the HDMI connector by checking their shapes. Make sure the connector is not upside down or tilted.

IMPORTANT NOTICE Caution: This player is capable of holding a still video image or on-screen display image on your television screen indefinitely. If you leave the still video image or on-screen display image displayed on your TV for an extended period of time you risk permanent damage to your television screen. Plasma display panel televisions and projection televisions are susceptible to this. If you have any questions or problems concerning your player, please consult your nearest Sony dealer. • Be sure to disconnect the HDMI cable when moving the player. • Hold the HDMI connector straight when connecting or disconnecting the HDMI cable. Do not twist or force the HDMI connector into the HDMI OUT jack.

5 BDP-S1200/BDP-S3200/BDP-S4200/BDP-S5200 4-476-203-41(1) C:\Users\fle\Desktop\SD130008\DATA\4476203411_GB\020WAR.fm master page=left Copy Protection Please be advised of the advanced content protection systems used in both Blu-ray Disc™ and DVD media. These systems, called AAC (Advanced Access Content System) and CSS (Content Scramble System), may contain some restrictions on playback, analogue output, and other similar features. The operation of this product and the restrictions placed may vary depending on the date of purchase, as the governing board of the AAC may adopt or change its restriction rules after the time of purchase. Cinavia Notice This product uses Cinavia technology to limit the use of unauthorized copies of some commercially-produced film and videos and their soundtracks.

When a prohibited use of an unauthorized copy is detected, a message will be displayed and playback or copying will be interrupted. More information about Cinavia technology is provided at the Cinavia Online Consumer Information Center at <http://www.cinavia.com>. To request additional information about Cinavia by mail, send a postcard with your mailing address to: Cinavia Consumer Information Center, P.

O. Box 86851, San Diego, CA, 92138, USA. About this manual The cover page photo is BDP-S5200. Copyrights and Trademarks • “AVCHD” and “AVCHD” are registered marks of the Wi-Fi Alliance. • Wi-Fi CERTIFIED™, WPA™, WPA2™, Wi-Fi Protected Setup™, Miracast™ and Wi-Fi CERTIFIED Miracast™ are marks of the Wi-Fi Alliance. • The Wi-Fi CERTIFIED Logo is a certification mark of the Wi-Fi Alliance. • The Wi-Fi Protected Setup Mark is a mark of the Wi-Fi Alliance. • DLNA®, the DLNA Logo and DLNA CERTIFIED™ are trademarks, service marks, or certification marks of the Digital Living Network Alliance. • Opera® Devices SDK from Opera Software ASA. Copyright 2002-2012 Opera Software ASA.

All rights reserved. • All other trademarks are trademarks of their respective owners. • Other system and product names are generally trademarks or registered trademarks of the manufacturers. ™ and ® marks are not indicated in this document. 7 BDP-S1200/BDP-S3200/BDP-S4200/BDP-S5200 4-476-203-41(1) C:\Users\fle\Desktop\SD130008\DATA\4476203411_GB\020WAR.fm master page=left Gracenote® End User License Agreement This application or device contains software from Gracenote, Inc. of Emeryville, California (“Gracenote”). The software from Gracenote (the “Gracenote Software”) enables this application to perform disc and/or file identification and obtain music-related information, including name, artist, track, and title information (“Gracenote Data”) from online servers or embedded databases (collectively, “Gracenote Servers”) and to perform other functions. You may use Gracenote Data only by means of the intended End-User functions of this application or device. You agree that you will use Gracenote Data, the Gracenote Software, and Gracenote Servers for your own personal noncommercial use only.

You agree not to assign, copy, transfer or transmit the Gracenote Software or any Gracenote Data to any third party. **YOU AGREE NOT TO USE OR EXPLOIT GRACENOTE DATA, THE GRACENOTE SOFTWARE, OR GRACENOTE SERVERS, EXCEPT AS EXPRESSLY PERMITTED HEREIN.** You agree that your non-exclusive license to use the Gracenote Data, the Gracenote Software, and Gracenote Servers will terminate if you violate these restrictions. If your license terminates, you agree to cease any and all use of the Gracenote Data, the Gracenote Software, and Gracenote Servers. Gracenote reserves all rights in Gracenote Data, the Gracenote Software, and the Gracenote Servers, including all ownership rights.



[You're reading an excerpt. Click here to read official SONY BDP-S5200 user guide](http://yourpdfguides.com/dref/5580454)

<http://yourpdfguides.com/dref/5580454>

Under no circumstances will Gracenote become liable for any payment to you for any information that you provide. You agree that Gracenote, Inc. may enforce its rights under this Agreement against you directly in its own name. The Gracenote service uses a unique identifier to track queries for statistical purposes. The purpose of a randomly assigned numeric identifier is to allow the Gracenote service to count queries without knowing anything about who you are.

For more information, see the web page for the Gracenote Privacy Policy for the Gracenote service. The Gracenote Software and each item of Gracenote Data are licensed to you "AS IS." Gracenote makes no representations or warranties, express or implied, regarding the accuracy of any Gracenote Data from in the Gracenote Servers. Gracenote reserves the right to delete data from the Gracenote Servers or to change data categories for any cause that Gracenote deems sufficient. No warranty is made that the Gracenote Software or Gracenote Servers are error-free or that functioning of Gracenote Software or Gracenote Servers will be uninterrupted. Gracenote is not obligated to provide you with new enhanced or additional data types or categories that Gracenote may provide in the future and is free to discontinue its services at any time. GRACENOTE DISCLAIMS ALL WARRANTIES EXPRESS OR IMPLIED, INCLUDING, BUT NOT LIMITED TO, IMPLIED WARRANTIES OF MERCHANTABILITY, FITNESS FOR A PARTICULAR PURPOSE, TITLE, AND NON-INFRINGEMENT. GRACENOTE DOES NOT WARRANT THE RESULTS THAT WILL BE OBTAINED BY YOUR USE OF THE GRACENOTE SOFTWARE OR ANY GRACENOTE SERVER. IN NO CASE WILL GRACENOTE BE LIABLE FOR ANY CONSEQUENTIAL OR INCIDENTAL DAMAGES OR FOR ANY LOST PROFITS OR LOST REVENUES. © 2000 to present.

Gracenote, Inc. 8 BDP-S1200/BDP-S3200/BDP-S4200/BDP-S5200 4-476-203-41(1) C:\Users\fle\Desktop\SD130008\DATA\4476203411_GB010COVTOC.fm master page=right Contents 2 4 WARNING Precautions Getting Started 10 14 16 16 Guide to Parts and Controls Step 1: Connecting the Player Step 2: Preparing for Network Connection Step 3: Easy Setup Playback 18 20 20 23 Playing a Disc Playing from a USB Device Playing via a Network Available Options I Internet (BDP-S3200/S4200/S5200 only) 25 Browsing Websites Settings and Adjustments 27 27 27 28 29 30 30 31 32 32 Using the Settings Displays [Software Update] [Screen Settings] [Audio Settings] [BD/DVD Viewing Settings] [Parental Control Settings] [System Settings] [Network Settings] [Easy Network Settings] [Resetting] Additional Information 33 37 Troubleshooting Specifications 9 BDP-S1200/BDP-S3200/BDP-S4200/BDP-S5200 4-476-203-41(1) C:\Users\fle\Desktop\SD130008\DATA\4476203411_GB030STU.fm master page=left Getting Started Guide to Parts and Controls Front panel 1 2 3 4 6 5 A Disc tray B Z (open/close) C [/I (on/standby) Turns on the player, or sets to standby mode. D (USB) jack Connect a USB device to this jack. To lock the disc tray (Child Lock) You can lock the disc tray to avoid accidental opening of the tray. While the player is turned on, press x (stop), HOME, and then TOP MENU button on the remote to lock or unlock the tray. E Power indicator Lights up when the player is turned on. F Remote sensor 10 BDP-S1200/BDP-S3200/BDP-S4200/BDP-S5200 4-476-203-41(1) C:\Users\fle\Desktop\SD130008\DATA\4476203411_GB030STU.fm master page=right Rear panel Getting Started A DC IN 12 V (AC adaptor input) jack B LAN (100) terminal C HDMI OUT jack D DIGITAL OUT (COAXIAL) jack 11 BDP-S1200/BDP-S3200/BDP-S4200/BDP-S5200 4-476-203-41(1) C:\Users\fle\Desktop\SD130008\DATA\4476203411_GB030STU.fm master page=left Remote The available functions of the remote are different depending on the disc or the situation. A Z (open/close) Opens or closes the disc tray. -TV- i (TV input select) Switches between TV and other input sources. -TV- [/I (TV on/standby) Turns on the TV, or sets to standby mode. [/I (on/standby) Turns on the player, or sets to standby mode. TOP MENU POP UP/ MENU B Colour buttons (red/green/ yellow/blue) Shortcut keys for interactive functions. C TOP MENU Opens or closes the BD's or DVD's Top Menu. POP UP/MENU Opens or closes the BD-ROM's Pop-up Menu, or the DVD's menu. OPTIONS (page 23) Displays the available options on the screen. RETURN Returns to the previous display. RETURN OPTIONS HOME SEN NETFLIX SUBTITLE AUDIO DISPLAY </M/m/, Moves the highlight to select a displayed item. b M/m as a shortcut key for track search during music CD playback. Centre button (ENTER) Enters the selected item. z N, 2 +, and AUDIO buttons have a tactile dot. Use the tactile dot as a reference when operating the player. HOME Enters the player's home menu. Displays the wall paper when pressed on the category icon of the home menu. 12 BDP-S1200/BDP-S3200/BDP-S4200/BDP-S5200 4-476-203-41(1) C:\Users\fle\Desktop\SD130008\DATA\4476203411_GB030STU.fm master page=right SEN (page 20) Accesses the "Sony Entertainment Network™" online service. NETFLIX Accesses the "NETFLIX" online service.

For further NETFLIX online service details, visit the following website and check the FAQ: <http://support.sony-europe.com/> D m/M (fast reverse/fast forward)

- Fast reverse/fast forward the disc when you press the button during playback. The search speed changes each time you press the button during video playback.
- Plays in slow motion, when pressed for more than one second in pause mode.
- Plays one frame at a time, when you press for a short time in pause mode.

N (play) Starts or re-starts playback. ./> (previous/next) Skips to the previous/next chapter, track, or file. X (pause) Pauses or re-starts playback. x (stop) Stops playback and remembers the stop point (resume point). The resume point for a title/track is the last point you played or the last photo for a photo folder. SUBTITLE (page 29) Selects the subtitle language when multi-lingual subtitles are recorded on BD-ROMs/DVD VIDEOS. 2 (volume) +/- Adjusts the TV volume. AUDIO (page 29) Selects the language track when multi-lingual tracks are recorded on BD-ROMs/DVD VIDEOS. Selects the sound track on CDs. (muting) Turns off the sound temporarily. Getting Started DISPLAY (page 19) Displays the playback and web browsing (BDP-S3200/S4200/ S5200 only) information on the screen. Home menu display The home menu appears when you press HOME. Select a category using </, Select an item using M/m, and press ENTER. Item Category [Setup]: Adjusts the player settings. [Photo]: Displays photos. [Music]: Plays music. [Video]: Plays videos. [Input]: Perform Screen mirroring with compatible source device (BDP-S3200/S5200 only). [Network]: Displays network items. 13 BDP-S1200/BDP-S3200/BDP-S4200/BDP-S5200 4-476-203-41(1) C:\Users\fle\Desktop\SD130008\DATA\4476203411_GB030STU.fm master page=left Step 1: Connecting the Player Do not connect the mains lead until you have made all the connections. Connecting to your TV Connect the player to your TV with a High Speed HDMI Cable.



[You're reading an excerpt. Click here to read official SONY BDP-S5200 user guide](http://yourpdfguides.com/dref/5580454)
<http://yourpdfguides.com/dref/5580454>

High Speed HDMI Cable (not supplied) High quality 14 BDP-S1200/BDP-S3200/BDP-S4200/BDP-S5200 4-476-203-41(1)

C:\Users\fle\Desktop\SD130008\DATA\4476203411_GB\030STU.fm master page=right Connecting to your AV amplifier (receiver) Select one of the following connection methods according to the input jacks on your AV amplifier (receiver). When you select A or B, make the appropriate settings in the [Audio Settings] setup (page 28). Getting Started High Speed HDMI Cable (not supplied) High Speed HDMI Cable (not supplied) t Set [BD Audio MIX Setting] (page 29). Coaxial digital cable (not supplied) 15 BDP-S1200/BDP-S3200/BDP-S4200/BDP-S5200 4-476-203-41(1) C:\Users\fle\Desktop\SD130008\DATA\4476203411_GB\030STU.fm master page=left Step 2: Preparing for Network Connection If you are not going to connect the player to a network, proceed to "Step 3: Easy Setup" (page 16). Step 3: Easy Setup When turned on for the first time Wait for a short while before the player turns on and starts [Easy Initial Settings]. Wired Setup Use a LAN cable to connect to the LAN (100) terminal on the player. 1 Insert two R03 (size AAA) batteries by matching the 3 and # ends on the batteries to the markings inside the battery compartment of the remote. LAN cable (not supplied) Broadband router ADSL modem/ Cable modem Internet z The use of a shielded and straight interface cable (LAN cable) is recommended. 2 Wireless Setup (BDP-S3200/S5200 only) Use the wireless LAN that is built into the player. Connect the supplied AC adaptor and AC power cord (mains lead) in the numeric order shown below. When removing them, do so in reverse order. 1 to DC IN 12 V AC adaptor (supplied) LAN cable (not supplied) 2 AC power cord (mains lead) (supplied) 3 to mains Wireless LAN ADSL modem/ Internet router Cable modem 16 BDP-S1200/BDP-S3200/BDP-S4200/BDP-S5200 4-476-203-41(1) C:\Users\fle\Desktop\SD130008\DATA\4476203411_GB\030STU.fm master page=right 3 Press [/I to turn on the player. 4 Turn on the TV and set the input selector on your TV. This will show the signal from the player on your TV screen. Perform [Easy Initial Settings]. Follow the on-screen instructions to make the basic settings using </M/m/, and ENTER on the remote. Getting Started 5 </M/m/, ENTER b • When [Easy Initial Settings] is complete, select [Easy Network Settings] to use the network functions of the player. • To enable wireless connection, set [Internet Settings] in [Network Settings] to [Wireless Setup(built-in)] (BDP-S3200/S5200 only). • To disable wireless connection, set [Internet Settings] in [Network Settings] to [Wired Setup] (BDP-S3200/S5200 only). 17 BDP-S1200/BDP-S3200/BDP-S4200/BDP-S5200 4-476-203-41(1) C:\Users\fle\Desktop\SD130008\DATA\4476203411_GB\040PLY.fm master page=left Playback Enjoying BONUSVIEW/ BD-LIVE Some BD-ROMs with the "BD-LIVE" logo* have bonus contents and other data that can be downloaded for your enjoyment. * Playing a Disc For playable discs, see page 38. 1 2 Switch the input selector on your TV so that the signal from the player appears on your TV screen. Press Z, and place a disc on the disc tray. 1 2 Connect a USB memory to the USB jack on the player (page 10). Use a 1 GB or larger USB memory as your local storage. Prepare for BD-LIVE (BD-LIVE only).

• Connect the player to a network (page 16). • Set [BD Internet Connection] in [BD/DVD Viewing Settings] setup to [Allow] (page 29). Playing side facing down 3 3 Insert a BD-ROM with BONUSVIEW/BD-LIVE. The operation method differs depending on the disc. Refer to the instruction manual supplied with the disc. Press Z to close the disc tray. Playback starts. If playback does not start automatically, select in the [Video], [Music], or [Photo] category, and press ENTER. z To delete data in the USB memory, select [Delete BD Data] in the [Video] category, and press ENTER. All data stored in the buda folder will be erased.

18 BDP-S1200/BDP-S3200/BDP-S4200/BDP-S5200 4-476-203-41(1) C:\Users\fle\Desktop\SD130008\DATA\4476203411_GB\040PLY.fm master page=right Enjoying Blu-ray 3D (BDP-S4200/S5200 only) You can enjoy a Blu-ray 3D Disc with the "Blu-ray 3D" logo*. * Displaying the play information You can view the playback information, etc., by pressing DISPLAY. The displayed information differs depending on the disc type and player status. Example: when playing a BD-ROM Playback 1 Prepare for Blu-ray 3D Disc playback. • Connect the player to your 3D-compatible devices using a High Speed HDMI Cable. • Set [3D Output Setting] and [TV Screen Size Setting for 3D] in the [Screen Settings] setup (page 27). 2 Insert a Blu-ray 3D Disc. The operation method differs depending on the disc.

Refer to the instruction manual supplied with the disc. A Output resolution/Video frequency z Refer also to the instruction manuals supplied with your TV and the connected device. B Title number or name C The currently selected angle D The currently selected audio setting E Available functions (angle, audio, subtitle) F Playback information Displays the Play mode, Playing status bar, Disc type, Video codec, Bitrate, Repeat type, Elapsed time, and Total playing time. G Chapter number 19 BDP-S1200/BDP-S3200/BDP-S4200/BDP-S5200 4-476-203-41(1) C:\Users\fle\Desktop\SD130008\DATA\4476203411_GB\040PLY.fm master page=left Playing from a USB Device For "Playable types of files", see page 39. 3 Select an Internet content and a variety of on-demand entertainment using </M/m/, and press ENTER. 1 Video streaming control panel The control panel appears when the video file starts playing. The displayed items may differ depending on Internet content providers. To display again, press DISPLAY. Connect the USB device to the USB jack on the player (page 10).

Refer to the instruction manual supplied with the USB device before connecting. 2 3 Select [Video], [Music], or [Photo] category on the home menu using </, Select [USB device] using M/m, and press ENTER. Playing via a Network Enjoying Sony Entertainment Network Sony Entertainment Network serves as a gateway, delivering the selected Internet content and a variety of on-demand entertainment straight to your player. z • Some Internet content requires registration via a PC before it can be played. • Some Internet content may not be available in some regions/countries. A Control display Press </M/m/, or ENTER for playback operations. B Playing status bar Status bar, Cursor indicating the current position, Playing time, Duration of the video file C Network condition indicates the signal strength for wireless connection (BDP-S3200/S5200 only). indicates the wired connection. D Network transmission speed E The file name of the next video F The file name of the current video selection 1 2 20 Connect the player to a network (page 16). Press SEN button on the remote. BDP-S1200/BDP-S3200/BDP-S4200/BDP-S5200 4-476-203-41(1) C:\Users\fle\Desktop\SD130008\DATA\4476203411_GB\040PLY.



[You're reading an excerpt. Click here to read official SONY BDP-S5200 user guide](http://yourpdfguides.com/dref/5580454)
<http://yourpdfguides.com/dref/5580454>

fm master page=right Playing files on a Home Network (DLNA) (BDP-S3200/S4200/S5200 only) A DLNA-compatible product can play video/music/photo files stored on another DLNA-compatible product via a network. To play a file from a DLNA server via another product (Renderer) When you play files from a DLNA Server on this unit, you can use a DLNA Controller-compatible product (a phone, etc.), to control playback.

1 Prepare to use DLNA. • Connect the player to a network (page 16). • Prepare the other necessary DLNA-compatible products. Refer to the instruction manual supplied with the product. Server Renderer Playback Controller To play a file from a DLNA server via this unit (DLNA player) Control this unit using a DLNA controller.

Refer to the instruction manual supplied with the DLNA controller. Server Player Select the DLNA server icon from [Video], [Music], or [Photo] category, then choose the file you want to play. 21 BDP-S1200/BDP-S3200/BDP-S4200/BDP-S5200 4-476-203-41(1)

C:\Users\fle\N\Desktop\SD130008\DATA\4476203411_GB\040PLY.fm master page=left Using "TV SideView" (BDP-S3200/S4200/S5200 only) "TV SideView" is a free mobile application for remote devices (such as smartphone, etc.). By using "TV SideView" with this player, you can easily enjoy the player by using the operation on your remote device. You can launch a service or application directly from the remote device and view the disc information during disc playback. "TV SideView" also can be used as a remote control and software keyboard. Before you use the "TV SideView" device with this player for the first time, be sure to register the "TV SideView" device. Follow the on-screen instructions on the "TV SideView" device for registration.

Using Screen mirroring (BDP-S3200/S5200 only) "Screen mirroring" is a function to display the screen of a mobile device on the TV by Miracast technology. The player can be connected directly with a Screen mirroring compatible device (e.g. smartphone, tablet). You can enjoy the display screen of the device on your large TV screen. No wireless router (or access point) is required to use this feature. b • When using Screen mirroring, the quality of picture and sound may sometimes be deteriorated due to interference from other network. • Some network functions may not be available during Screen mirroring. • Make sure that the device is compatible with Miracast. Connectivity with all Miracast compatible devices is not guaranteed.

b The registration can only be performed on the Home Menu. 1 Select [Screen mirroring] from [Input] category on the home menu using </, and press ENTER. Follow the on-screen instructions. 2 22 BDP-S1200/BDP-S3200/BDP-S4200/BDP-S5200 4-476-203-41(1)

C:\Users\fle\N\Desktop\SD130008\DATA\4476203411_GB\040PLY.fm master page=right x Available Options Various settings and playback operations are available by pressing OPTIONS.

The available items differ depending on the situation. x x Common options x [Repeat Setting]: Sets the repeat x mode. x [3D Menu] (BDP-S4200/S5200 only): x x x - [Simulated 3D]: Adjusts the simulated 3D effect. - [3D Depth Adjustment]: Adjusts the depth of 3D image. - [2D Playback]: Sets playback to 2D image.

[Play]/[Stop]: Starts or stops the playback. [Play from start]: Plays the item from the beginning. [Change Category]: Switches category between [Video], [Music] and [Photo] category. x x x [Menu]/[Popup Menu]: Displays the BD-ROM's Pop-up Menu or DVD's menu. @ @ @ @ @ @ Selects the sound track on CDs. @ @ @ @ @ @ - [BNR]: Reduces the mosaic-like block noise in the picture. @ @ [Pause]: Pauses the playback. @ @ @ @ @ @ @ @ @ @ - [Play from Music CD]: Sets the tracks in CD-DAs. [Change Display]: Switches between [Grid View] and [List View]. [View Image]: Displays the selected photo.

[Slideshow]: Plays a slideshow. [Rotate Left]: Rotates the photo counterclockwise by 90 degrees. @ @ @ @ @ @ Place the cursor on the link you want to view, then press ENTER. The linked website is displayed. @ @ @ @ @ @ @ @ @ @ When the previous page does not appear even if you select [Previous page], select [Window List] from the options menu and select the page you want to return to from the list. To quit the Internet browser Press HOME. 25 BDP-S1200/BDP-S3200/BDP-S4200/BDP-S5200 4-476-203-41(1) C:\Users\fle\N\Desktop\SD130008\DATA\4476203411_GB\050INT.fm master page=left x Available options Various settings and operations are available by pressing OPTIONS. The available items differ depending on the situation. x [Browser Setup]: Displays the Internet Browser settings.

- [Zoom]: Increases or decreases the size of the displayed contents. - [JavaScript Setup]: Enables or disables JavaScript. - [Cookie Setup]: Sets whether or not to accept cookies. - [SSL Alarm Display]: Enables or disables SSL. x [Input]: Displays the software keyboard to enter characters while browsing a website.

x [Break]: Moves the cursor to the next line in the text input field. x [Delete]: Erases one character on the left side of the cursor during text input. x [Window List]: Displays a list of currently opened website windows. Allows you to return to a previously displayed website by selecting the window. x [Bookmark List]: Displays the bookmark list.

x [URL entry]: Allows you to enter a URL when the software keyboard is displayed. x x x x [Set as start page]: Sets the currently displayed website as the default start page. [Open in new window]: Opens a link in a new window. [Character encoding]: Sets the character code. [Display certificate]: View server certificates sent from pages that support SSL. [Previous page]/[Next page]: x x x Moves to the previous/next page. [Cancel loading]: Stops loading a page.

[Reload]: Reloads the same page. [Add to Bookmark]: Adds the currently displayed website to the bookmark list. 26 BDP-S1200/BDP-S3200/BDP-S4200/BDP-S5200 4-476-203-41(1) C:\Users\fle\N\Desktop\SD130008\DATA\4476203411_GB\060ADJ.

fm master page=right Settings and Adjustments [Screen Settings] x [3D Output Setting] (BDP-S4200/S5200 only) Using the Settings Displays Select [Setup] on the home menu when you need to change the settings of the player. The default settings are underlined. [Auto]: Normally select this. [Off]: Select this to display all content in 2D. x [TV Screen Size Setting for 3D] (BDP-S4200/S5200 only) 1 2 Select [Setup] on the home menu using </, Select the setup category icon using M/m, and press ENTER. Sets the screen size of your 3D-compatible TV. x [TV Type] Settings and Adjustments [Software Update] x [Update via Internet] [16:9]: Select this when connecting to a wide-screen TV or a TV with a wide mode function. [4:3]: Select this when connecting to a 4:3 screen TV without a wide mode function. x [Screen Format] Updates the player's software using available network.

Make sure that the network is connected to the Internet. For details, see "Step 2: Preparing for Network Connection" (page 16).



[You're reading an excerpt. Click here to read official SONY BDP-S5200 user guide](http://yourpdfguides.com/dref/5580454)
<http://yourpdfguides.com/dref/5580454>

x [Update via USB Memory] [Full]: Select this when connecting to a TV with a wide mode function. Displays a 4:3 screen picture in 16:9 aspect ratio even on a wide-screen TV. [Normal]: Changes the picture size to fit the screen size with the original picture aspect ratio.

x [DVD Aspect Ratio] Updates the player's software using USB memory. Make sure that the Software Update Folder is correctly named as "UPDATE" and all the update files must be stored in this folder. The player can recognise up to 500 files/folders in a single layer including the update files/folders. z • We recommend performing the software update every 2 months or so. • For information about update functions, visit the following website: <http://support.sony-europe.com/> [Letter Box]: Displays a wide picture with black bands on the top and bottom. 27 BDP-S1200/BDP-S3200/BDP-S4200/BDP-S5200 4-476-203-41(1) C:\Users\fle\Desktop\SD130008\DATA\4476203411_GB\060ADJ.fm master page=left [Pan & Scan]: Displays a full-height picture on the entire screen, with trimmed sides. x [YCbCr/RGB (HDMI)] [Auto]: Automatically detects the connected TV type, and switches to the matching colour setting. [YCbCr (4:2:2)]: Outputs YCbCr 4:2:2 video signals. [YCbCr (4:4:4)]: Outputs YCbCr 4:4:4 video signals. [RGB]: Outputs RGB video signals. x [HDMI Deep Colour Output] x [Cinema Conversion Mode] [Auto]: Normally select this. The player automatically detects whether the material is video-based or film-based, and switches to the appropriate conversion method.

[Video]: The conversion method suited for video-based material will always be selected regardless of the material. x [Output Video Resolution] [Auto]: Normally select this. [16bit]/[12bit]/[10bit]: Outputs 16bit/12bit/10bit video signals when the connected TV is compatible with Deep Colour. [Off]: Select this when the picture is unstable or colours appear unnatural. x [Pause Mode] Normally select [Auto]. Select [Original Resolution] to output the resolution recorded on the disc. When the resolution is lower than the SD resolution, it is scaled up to the SD resolution. x [BD-ROM 24p Output] [Auto]: Normally select this. Dynamic moving pictures appear without blurring. [Frame]: Displays static pictures at high resolution.

[Audio Settings] x [Digital Audio Output] [Auto]: Outputs 1920 × 1080p/24 Hz video signals only when connecting a 1080/24p-compatible TV using the HDMI OUT jack. [On]: Turns on the function. [Off]: Select this when your TV is not compatible with 1080/24p video signals. x [DVD-ROM 24p Output] [Auto]: Normally select this. Outputs audio signals according to the status of the connected devices.

[PCM]: Outputs PCM signals from the DIGITAL OUT (COAXIAL)/HDMI OUT jack. [Auto]: Outputs 1920 × 1080p/24 Hz video signals only when connecting a 1080/24p-compatible TV using the HDMI OUT jack. [Off]: Select this when your TV is not compatible with 1080/24p video signals. 28 BDP-S1200/BDP-S3200/BDP-S4200/BDP-S5200 4-476-203-41(1) C:\Users\fle\Desktop\SD130008\DATA\4476203411_GB\060ADJ.fm master page=right x [BD Audio MIX Setting] [On]: Outputs the audio obtained by mixing the interactive and secondary audio to the primary audio.

[Off]: Outputs the primary audio only. Select this to output HD audio signals to an AV amplifier (receiver). x [Dolby D Compatible Output] [BD/DVD Viewing Settings] x [BD/DVD Menu Language] [On]: Converts DTS audio source to Dolby Digital audio by using EDID (Extended Display Identification Data). [Off]: Turns off the function. x [Audio DRC] Selects the default menu language for BD-ROMs or DVD VIDEOS. Select [Select Language Code], and enter the code for your language, referring to "Language code list" (page 42). x [Audio Language] [Auto]: Performs playback at the dynamic range specified by the disc (BD-ROM only). Other discs are played back at the [On] level. [On]: Performs playback at a standard compression level. [Off]: No compression works.

A more dynamic sound is produced. x [Downmix] Selects the default track language for BD-ROMs or DVD VIDEOS. When you select [Original], the language given priority in the disc is selected. Select [Select Language Code], and enter the code for your language, referring to "Language code list" (page 42). x [Subtitle Language] Settings and Adjustments [Surround]: Outputs audio signals with surround effects. Select this when connecting an audio device that supports Dolby Surround (Pro Logic) or DTS Neo:6. [Stereo]: Outputs audio signals without surround effects. Select this when connecting an audio device that does not support Dolby Surround (Pro Logic) or DTS Neo:6. Selects the default subtitle language for BD-ROMs or DVD VIDEOS. Select [Select Language Code], and enter the code for your language, referring to "Language code list" (page 42).

x [BD Hybrid Disc Playback Layer] [BD]: Plays BD layer. [DVD/CD]: Plays DVD or CD layer. x [BD Internet Connection] [Allow]: Normally select this. [Do not allow]: Prohibits Internet connection. 29 BDP-S1200/BDP-S3200/BDP-S4200/BDP-S5200 4-476-203-41(1)

C:\Users\fle\Desktop\SD130008\DATA\4476203411_GB\060ADJ.fm master page=left [Parental Control Settings] x [Password] [System Settings] x [OSD Language] Sets or changes the password for the Parental Control function. A password allows you to set a restriction on BD-ROM or DVD VIDEO, and Internet video playback. If necessary, you can differentiate the restriction levels for BD-ROMs, DVD VIDEOS, and Internet videos. x [Parental Control Area Code] Selects on-screen display language for your player. x [HDMI Settings] By connecting Sony components that are compatible with HDMI functions with a High Speed HDMI Cable, operation is simplified.

[Control for HDMI] Playback of some BD-ROMs, DVD VIDEOS, or Internet videos can be limited according to the geographic area. Scenes may be blocked or replaced with different scenes. Follow the on-screen instructions and enter your four-digit password. x [BD Parental Control] / [DVD Parental Control] / [Internet Video Parental Control] [On]: The following BRAVIA Sync features are available: – One-Touch Play – System Power-Off – Language Follow [Off]: Turns off the function. z For details, refer to the instruction manual supplied with the TV or components. [Linked to TV-off] By setting Parental Control, scenes can be blocked or replaced with different scenes. Follow the on-screen instructions and enter your four-digit password. x [Internet Video Unrated] [On]: Automatically turns off the player and HDMI-compatible components when the connected TV enters standby mode (BRAVIA Sync). [Off]: Turns off the function. [Allow]: Allows the playback of unrated Internet videos.

[Block]: Blocks the playback of unrated Internet videos. 30 BDP-S1200/BDP-S3200/BDP-S4200/BDP-S5200 4-476-203-41(1)

C:\Users\fle\Desktop\SD130008\DATA\4476203411_GB\060ADJ.fm master page=right x [Startup Screen] Set the startup screen when turning on the player.



[You're reading an excerpt. Click here to read official SONY BDP-S5200 user guide](http://yourpdfguides.com/dref/5580454)
<http://yourpdfguides.com/dref/5580454>

[Network Service Screen]: Starts on Sony Entertainment Network portal screen. [Home Menu Screen]: Starts on home menu. x [Quick Start Mode] x [Gracenote Settings] (BDP-S3200/S4200/S5200 only) [Auto]: Automatically downloads disc information when disc playback stops. Connect to the network for downloading. [Manual]: Downloads the disc information when [Video Search] or [Music Search] is selected. x [Device Name] (BDP-S3200/S4200/S5200 only) [On]: Shortens the startup time when turning on the player. [Off]: Reduces standby power consumption. x [Auto Standby] Displays the player's name. The player's name can be changed. x [System Information] Settings and Adjustments [On]: Automatically returns to standby mode if no button is pressed for more than 20 minutes. [Off]: Turns off the function. x [Auto Display] Displays the player's software version information and the MAC address. x [Software License Information] Displays information about the Software License. [On]: Automatically displays information on the screen when changing the viewing titles, picture modes, audio signals, etc. [Off]: Displays information only when you press DISPLAY. x [Screen Saver] [Network Settings] x [Internet Settings] [On]: Turns on the screen saver function. The screen saver image appears when you do not use the player for more than 10 minutes while an on-screen display is displayed. [Off]: Turns off the function. x [Software Update Notification] [On]: Sets the player to inform you of newer software version information (page 27). [Off]: Turns off the function. Connect the player to the network beforehand. For details, see "Step 2: Preparing for Network Connection" (page 16). [Wired Setup] (BDP-S3200/S5200 only): Select this when you connect to a broadband router using a LAN cable. [Wireless Setup(built-in)] (BDP-S3200/S5200 only): Select this when you use the wireless LAN that is built into the player for wireless network connection. z For further details, visit the following website and check the FAQ contents: For customers in European countries [http://support.sony-europe.com/31BDP-S1200/BDP-S3200/BDP-S4200/BDP-S52004-476-203-41\(1\)C:\Users\fle\Desktop\SD130008\DATA\4476203411_GB060ADJ](http://support.sony-europe.com/31BDP-S1200/BDP-S3200/BDP-S4200/BDP-S52004-476-203-41(1)C:\Users\fle\Desktop\SD130008\DATA\4476203411_GB060ADJ).

fm master page=left x [Network Connection Status] Displays the current network status. x [Network Connection Diagnostics] [Easy Network Settings] Select [Easy Network Settings] to specify the network settings. Follow the on-screen instructions. Checks for the proper network connection by running the network diagnostics. x [Connection Server Settings] (BDP-S3200/S4200/S5200 only) Sets whether or not to display the connected server. x [Auto Renderer Access Permission] (BDP-S3200/S4200/S5200 only) [Resetting] x [Reset to Factory Default Settings] [On]: Allows automatic access from newly detected DLNA controllercompatible product. [Off]: Turn off the function. x [Renderer Access Control] (BDP-S3200/S4200/S5200 only) Resets the player settings to the factory default by selecting the group of settings. All the settings within the group will be reset. x [Initialise Personal Information] Erases your personal information stored in the player.

b If you dispose, transfer or resell this unit, please delete all Personal Information for security purposes. Please take the appropriate measures such as logging out after using a network service. Displays a list of DLNA controllercompatible products and sets whether or not each product is accessible via this player. x [Registered Remote Devices] (BDP-S3200/S4200/S5200 only) Displays a list of your registered remote devices. x [Remote Start] [On]: Turns the player on or off using your remote device when connecting to the network.

[Off]: Turns off the functions. b Set [Remote Start] to [On] and turn off the player to activate Network standby (page 37). 32 BDP-S1200/BDP-S3200/BDP-S4200/BDP-S5200 4-476-203-41(1) C:\Users\fle\Desktop\SD130008\DATA\4476203411_GB070ADD.fm master page=right Additional Information The display language on the screen switches automatically when connected to the HDMI OUT jack. , When [Control for HDMI] in [HDMI Settings] is set to [On] (page 30), the display language on the screen automatically switches according to the language setting of the connected TV (if you change the setting on your TV, etc.

). Troubleshooting If you experience any of the following difficulties while using the player, use this troubleshooting guide to help remedy the problem before requesting repairs. Should any problem persist, consult your nearest Sony dealer. Sound Picture There is no picture or the picture is not output correctly. , Check that all the connecting cables are securely connected (page 14). , Switch the input selector on your TV to display the signal from the player. , Reset the [Output Video Resolution] to the lowest resolution by pressing x (stop), HOME, and then POP UP/MENU button on the remote. , Try the following: 1Turn the player off and on again. 2Turn the connected equipment off and on again. 3Disconnect and then reconnect the HDMI cable.

, The HDMI OUT jack is connected to a DVI device that does not support copyright protection technology. , Check the [Output Video Resolution] settings in the [Screen Settings] setup (page 28). , For BD-ROMs, check the [BD-ROM 24p Output] setting in the [Screen Settings] setup (page 28). , For DVD-ROMs, check the [DVD-ROM 24p Output] setting in the [Screen Settings] setup (page 28). There is no sound or the sound is not output correctly. , Check that all the connecting cables are securely connected (page 14). , Switch the input selector on your AV amplifier (receiver) so that the audio signals of the player are output from your AV amplifier (receiver). , If the audio signal does not come through the DIGITAL OUT (COAXIAL)/HDMI OUT jack, check the audio settings (page 28). , For HDMI connections, try the following: 1Turn the player off and on again. 2Turn the connected equipment off and on again. 3Disconnect and then reconnect the HDMI cable. , For HDMI connections, if the player is connected to a TV through an AV amplifier (receiver), try connecting the HDMI cable directly to the TV. Refer also to the instruction manual supplied with the AV amplifier (receiver). , The HDMI OUT jack is connected to a DVI device (DVI jacks do not accept audio signals). Additional Information 33 BDP-S1200/BDP-S3200/BDP-S4200/BDP-S5200 4-476-203-41(1) C:\Users\fle\Desktop\SD130008\DATA\4476203411_GB070ADD.

fm master page=left , The device connected to the HDMI OUT jack does not support the audio format of the player. Check the audio settings (page 28). Disc The disc does not play. , The disc is dirty or skewed. , The disc is upside down. Insert the disc with the playback side facing down. , The disc has a format that cannot be played back by this player (page 38). , The player cannot play a recorded disc that is not correctly finalised. , The region code on the BD or DVD does not match the player. The HD Audio (Dolby Digital Plus, Dolby TrueHD, DTS-HD High Resolution Audio, and DTS-HD Master Audio) is not output by bitstream.



[You're reading an excerpt. Click here to read official SONY BDP-S5200 user guide](http://yourpdfguides.com/dref/5580454)
<http://yourpdfguides.com/dref/5580454>

, Set [BD Audio MIX Setting] in [Audio Settings] setup to [Off] (page 29). , Check that the connected AV amplifier (receiver) is compatible with each HD Audio format. USB device The player does not detect a USB device connected to the player. , Make sure that the USB device is securely connected to the USB jack. , Check if the USB device or a cable is damaged.

, Check if the USB device is on. , If the USB device is connected via a USB hub, connect the USB device directly to the player. The interactive audio is not output. , Set [BD Audio MIX Setting] in [Audio Settings] setup to [On] (page 29). Message Code 3 [Audio outputs temporarily muted. Do not adjust the playback volume. The content being played is protected by Cinavia and is not authorized for playback on this device. For more information, see <http://www.cinavia.com>.

Message Code 3.] appears on the screen when playing a disc. , The audio track of the video that you are playing contains a Cinavia code indicating that it is an unauthorised copy of professionally-produced content (page 6). Sony Entertainment Network The picture/sound is poor/certain programmes display a loss of detail, especially during fast-motion or dark scenes. , Picture/sound quality may be improved by changing the connection speed.

Recommended connection speed is of at least 2.5 Mbps for standard definition video (10 Mbps for high definition video). The picture is small. , Press M to zoom in. 34 BDP-S1200/BDP-S3200/BDP-S4200/BDP-S5200 4-476-203-41(1) C:\Users\fle\Desktop\SD130008\DATA\4476203411_GB070ADD.

fm master page=right Network connection The player cannot connect to the network. , Check the network connection (page 16) and the network settings (page 31). The desired wireless router do not appear in the wireless network list (BDP-S3200/S5200 only). , Press RETURN to return to the previous screen, and try wireless setup again. If the desired wireless router is still not detected, select [New connection registration] to perform [Manual registration]. The PC cannot connect to the Internet after [Wi-Fi Protected Setup (WPS)] is performed (BDP-S3200/S5200 only). , The wireless settings of the router may change automatically if you use the Wi-Fi Protected Setup function before adjusting the settings of the router. In this case, change the wireless settings of your PC accordingly. The message [A new software version is available. Please go to the "Setup" section of the menu and select "Software Update" to perform the update.

] appears on the screen when turning the player on. , See [Software Update] (page 27) to update the player to a newer software version. Additional Information You cannot connect the player to the wireless LAN router (BDP-S3200/S5200 only). , Check if the wireless LAN router is on. , Depending on the surrounding environment, such as the wall material, radio wave receiving condition, or obstacles between the player and the wireless LAN router, the communication distance may be shortened. Move the player and the wireless LAN router closer to each other. , Devices that use a 2.4 GHz frequency band, such as a microwave, Bluetooth, or digital cordless device, may interrupt the communication. Move the player away from such devices, or turn off such devices. Control for HDMI (BRAVIA Sync) The [Control for HDMI] function does not work (BRAVIA Sync).

, Check that [Control for HDMI] in [HDMI Settings] is set to [On] (page 30). , If you change the HDMI connection, turn the player off and on again. , If power failure occurs, set [Control for HDMI] in [HDMI Settings] to [Off], then set [Control for HDMI] in [HDMI Settings] to [On] (page 30). , Check the following and refer to the instruction manual supplied with the component. – the connected component is compatible with the [Control for HDMI] function. – the connected component's setting for the [Control for HDMI] function is correct. 35 BDP-S1200/BDP-S3200/BDP-S4200/BDP-S5200 4-476-203-41(1) C:\Users\fle\Desktop\SD130008\DATA\4476203411_GB070ADD.fm master page=left , When you connect the player to a TV through an AV amplifier (receiver), – if the AV amplifier (receiver) is not compatible with the [Control for HDMI] function, you may be unable to control the TV from the player. – if you change the HDMI connection, disconnect and reconnect the mains lead, or a power failure occurs, try the following: 1Switch the input selector of the AV amplifier (receiver) so that the picture from the player appears on the TV screen. 2Set [Control for HDMI] in [HDMI Settings] to [Off], then set [Control for HDMI] in [HDMI Settings] to [On] (page 30).

Refer to the instruction manual supplied with the AV amplifier (receiver). Message Code 1 [Playback stopped. The content being played is protected by Cinavia and is not authorized for playback on this device. For more information, see <http://www.cinavia.com>. Message Code 1.] appears on the screen when playing a disc. , The audio track of the video that you are playing contains a Cinavia code indicating it was intended for presentation using professional equipment only and is not authorised for playback by consumers (page 6). The disc tray does not open and you cannot remove the disc even after you press Z.

, Try the following: 1Turn the player off, and disconnect the mains lead. 2Reconnect the mains lead while pressing down Z on the player. 3Keep pressing down Z on the player until the tray opens. 4Remove the disc. The System Power-Off function does not work (BRAVIA Sync). , Check that [Control for HDMI] and [Linked to TV-off] in [HDMI Settings] are set to [On] (page 30). Others Playback does not start from the beginning of content. , Press OPTIONS, and select [Play from start]. The player does not respond to any button. , Moisture has condensed inside the player (page 4).

Playback does not start from the resume point where you last stopped playing. , The resume point may be cleared from memory depending on the disc when – you open the disc tray. – you disconnect the USB device. – you play other content. – you turn off the player.

36 BDP-S1200/BDP-S3200/BDP-S4200/BDP-S5200 4-476-203-41(1) C:\Users\fle\Desktop\SD130008\DATA\4476203411_GB070ADD.fm master page=right Specifications System Laser: Semiconductor laser Inputs and outputs (Jack name: Jack type/Output level/Load impedance) DIGITAL OUT (COAXIAL): Phono jack/0.5 Vp-p/75 ohms HDMI OUT: HDMI 19-pin standard connector LAN (100): 100BASE-TX Terminal USB: USB jack Type A (For connecting a USB memory, memory card reader, digital still camera, and digital video camera) DC IN: BDP-S1200: 12 V DC, 600 mA BDP-S3200/S4200: 12 V DC, 650 mA BDP-S5200: 12 V DC, 750 mA Network standby: 4.5 W (all wired/wireless network ports ON) Dimensions (approx.): 265 mm × 199 mm × 43 mm (width/depth/height) incl.

projecting parts Mass (approx.): 0.9 kg Operating temperature: 5 °C to 35 °C Operating humidity: 25 % to 80 % Supplied accessories AC adaptor (AC-M1208WW) (1) AC power cord (mains lead) (1) Remote commander (remote) (1) R03 (size AAA) batteries (2) Specifications and design are subject to change without notice.



[You're reading an excerpt. Click here to read official SONY BDP-S5200 user guide](http://yourpdfguides.com/dref/5580454)

<http://yourpdfguides.com/dref/5580454>

*Additional Information Wireless (BDP-S3200/S5200 only) Wireless LAN standard: IEEE 802.11 b/g/n Frequency range: 2.4 GHz band: Channels 1-13 Modulation: DSSS and OFDM General Power requirements: 12 V DC with AC adaptor Rating: Input 220 V - 240 V AC, 50/60 Hz Power consumption (when using AC adaptor): BDP-S1200: 8.8 W BDP-S3200/S4200: 9.5 W BDP-S5200: 11 W 37 BDP-S1200/BDP-S3200/BDP-S4200/BDP-S5200 4-476-203-41(1) C:\Users\fle\Desktop\SD130008\DATA\4476203411_GB070ADD.fm master page=left Playable discs Blu-ray Disc*1 DVD*3 BD-ROM BD-R*2/BD-RE*2 DVD-ROM DVD-R/DVD-RW DVD+R/DVD+RW CD-DA (Music CD) CD-ROM CD-R/CD-RW Note on Discs This product is designed to playback discs that conform to the Compact Disc (CD) standard. DualDiscs and some of the music discs encoded with copyright protection technologies do not conform to the Compact Disc (CD) standard, therefore, these discs may not be playable by this product.*

*CD*3 Note on playback operations of BDs/ DVDs Some playback operations of BDs/ DVDs may be intentionally set by software producers. Since this player plays BDs/DVDs according to the disc contents the software producers designed, some playback features may not be available. *1 Since the Blu-ray Disc specifications are new and evolving, some discs may not be playable depending on the disc type and the version. The audio output differs depending on the source, connected output jack, and selected audio settings. *2 BD-RE: Ver.2.1 BD-R: Ver.1.1, 1.2, 1.*

*3 including organic pigment type BD-R (LTH type) The BD-Rs recorded on a PC cannot be played if postscripts are recordable. *3 A CD or DVD disc will not play if it has not been correctly finalised. For more information, refer to the instruction manual supplied with the recording device. Note about double-layer BDs/DVDs The playback pictures and sound may be momentarily interrupted when the layers switch. Region code (BD-ROM/DVD VIDEO only) Your player has a region code printed on the rear of the unit and will only play BD-ROMs/DVD VIDEOS labeled with identical region codes or ALL .*

Discs that cannot be played •••••BDs with cartridge BDXLs DVD-RAMs HD DVDs DVD Audio discs PHOTO CDs Data part of CD-Extras Super VCDs Audio material side on DualDiscs Region code 38 BDP-S1200/BDP-S3200/BDP-S4200/BDP-S5200 4-476-203-41(1)

*C:\Users\fle\Desktop\SD130008\DATA\4476203411_GB070ADD.fm master page=right Playable types of files Video Codec MPEG-1 Video*1 MPEG-2 Video*2 Container PS MKV PS*3 TS*4 MKV*1 Xvid AVI MKV MKV*1 MP4 *1 Extension .mpg, .mpeg .mkv . mpg, .mpeg .m2ts, .mts .mkv .avi .mkv .mkv .mp4, .m4v .*

m2ts, .mts .mov .flv, .f4v .3gp, .3g2, .3gpp, .3gp2 .m2ts, .

*mts .mkv .wmv, .asf .mkv With Audio Dolby Digital, DTS, LPCM, MPEG Dolby Digital, LPCM, AAC, MP3 Dolby Digital, DTS, LPCM, MPEG Dolby Digital, DTS, LPCM, MPEG, AAC Dolby Digital, LPCM, AAC, MP3 Dolby Digital, LPCM, WMA9, MP3 Dolby Digital, LPCM, AAC, MP3 Dolby Digital, LPCM, AAC, MP3 AAC Additional Information Dolby Digital, DTS, LPCM, MPEG, AAC Dolby Digital, LPCM, AAC, MP3 LPCM, AAC, MP3 AAC Dolby Digital, DTS, LPCM, MPEG, AAC Dolby Digital, LPCM, AAC, MP3 WMA9 Dolby Digital, LPCM, AAC, MP3 Dolby Digital, LPCM, AAC, MP3 Dolby Digital, LPCM, AAC, MP3 TS*1 MPEG4/AVC*5 Quick Time*6 FLV*6 3gpp/ 3gpp2*6 VCI*1 WMV9*1 Motion JPEG*6 Format AVCHD (Ver.*

*2.0)*1*7*8 TS MKV ASF MKV Quick Time .mov AVI .avi 39 BDP-S1200/BDP-S3200/BDP-S4200/BDP-S5200 4-476-203-41(1)*

*C:\Users\fle\Desktop\SD130008\DATA\4476203411_GB070ADD.fm master page=left Music Codec Extension MP3 (MPEG-1 Audio .mp3 Layer III)*9 AAC/HE-AAC*1*9 WMA9 Standard*1 LPCM*9 FLAC *6 *8 .m4a, .aac*6 .wma .wav .flac, .fla .ac3 The player plays AVCHD format files that are recorded on a digital video camera, etc. The AVCHD format disc will not play if it has not been correctly finalised. *9 The player can play “.*

*mka” files. (This file cannot be played on a DLNA server (BDP-S3200/S4200/S5200 only).) *10 The player does not play animated PNG or animated GIF files. *11 For MPO files other than 3D, the key image or the first image is displayed (BDP-S4200/S5200 only). Dolby Digital*6*9 b • Some files may not play depending on the file format, the encoding, or recording condition (BDP-S1200 only). • Some files may not play depending on the file format, file encoding, recording condition, or DLNA server condition (BDP-S3200/S4200/S5200 only). • Some files edited on a PC may not play. • Some files may not be able to perform fast forward or fast reverse function. • The player does not play coded files such as DRM and Lossless. • The player can recognise the following files or folders in BDs, DVDs, CDs and USB devices: – up to folders in the 9th layer, including the root folder.*

– up to 500 files/folders in a single layer. • The player can recognise the following files or folders stored in the DLNA server (BDP-S3200/S4200/S5200 only): – up to folders in the 19th layer. – up to 999 files/folders in a single layer. • The player can support frame rate: – up to 60 fps for AVCHD (MPEG4/AVC) only. – up to 30 fps for other video codecs.

*• The player can support video bit rate up to 40 Mbps. • The player can support video resolution up to 1920 × 1080p. • Some USB devices may not work with this player. Photo Format JPEG PNG GIF MPO *1 Extension .jpeg, .*

*jpg, .jpe .png*10 .gif*10 .mpo*6*11 *2 *3 *4 *5 *6 *7 The player may not play this file format on a DLNA server (BDP-S3200/S4200/ S5200 only).*

@ @ @ @ @ The player can support AVC up to Level 4.1. @ @ The player can support frame rate up to 60 fps. 40 BDP-S1200/BDP-S3200/BDP-S4200/BDP-S5200 4-476-203-41(1) C:\Users\fle\Desktop\SD130008\DATA\4476203411_GB070ADD.fm master page=right • The player can recognise Mass Storage Class (MSC) devices (such as flash memory or an HDD), Still Image Capture Device (SICD) class devices and 101 keyboard.

• To avoid data corruption or damage to the USB memory or devices, turn off the player when connecting or removing the USB memory or devices. • The player may not play high bit rate video files on DATA CDs smoothly. It is recommended to play such files using DATA DVDs or DATA BDs. WPA-PSK (TKIP), WPA2-PSK (TKIP) TKIP is a security technology developed to correct the deficiencies of WEP. TKIP assures a higher security level than WEP. WPA-PSK (AES), WPA2-PSK (AES) AES is a security technology that uses an advanced security method that is distinct from WEP and TKIP. AES assures a higher security level than WEP or TKIP. About wireless LAN security (BDP-S3200/S5200 only) Since communication via the wireless LAN function is established by radio waves, the wireless signal may be susceptible to interception. To protect wireless communication, this player supports various security functions. Be sure to correctly configure the security settings in accordance with your network environment.

No Security Although you can easily make settings, anyone can intercept wireless communication or intrude into your wireless network, even without any sophisticated tools.



[You're reading an excerpt. Click here to read official SONY BDP-S5200 user guide](http://yourpdfguides.com/dref/5580454)
<http://yourpdfguides.com/dref/5580454>