



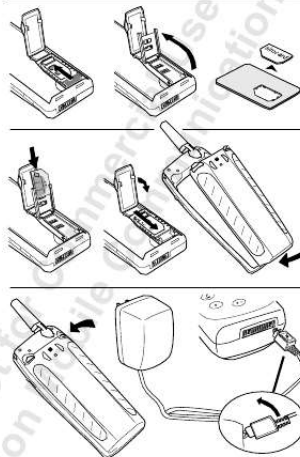
Your PDF Guides

You can read the recommendations in the user guide, the technical guide or the installation guide for SONY ERICSSON R250S PRO. You'll find the answers to all your questions on the SONY ERICSSON R250S PRO in the user manual (information, specifications, safety advice, size, accessories, etc.). Detailed instructions for use are in the User's Guide.

User manual SONY ERICSSON R250S PRO
User guide SONY ERICSSON R250S PRO
Operating instructions SONY ERICSSON R250S PRO
Instructions for use SONY ERICSSON R250S PRO
Instruction manual SONY ERICSSON R250S PRO

QUICK START

This page helps you to get the phone up and running quickly. If you have not used a mobile phone before, we recommend that you read the chapter "Preparing Your Phone for Use" on page 4, for a more detailed installation procedure.



- Wash the phone gently in cold water under a water tap.
- Do not immerse the phone in water!



[You're reading an excerpt. Click here to read official SONY ERICSSON R250S PRO user guide](http://yourpdfguides.com/dref/2738049)
<http://yourpdfguides.com/dref/2738049>

Manual abstract:

@@@ - sation in the earpiece. - entering the phone book. - of the phone, which makes it easy to call a pre-set alert number. page 112, before using your mobile phone. The R250s PRO is the first mobile phone which supports GSM Pro. GSM Pro is an extended feature of the GSM network, which supports group calls and call monitoring. (GSM Pro requires a GSM Pro subscription.) The R250s PRO has an vibrating call alert, which means that the phone vibrates when you receive an incoming call or message. This is a useful function when you are working in a noisy environment, where you When you work in a noisy environment, you can use Ericsson handsfree equipment in combination with ear protection equipment. At an incoming group call, the call is answered automatically and you will hear the converKey pad lock.

The key pad lock prevents accidental dialling, which could happen if you keep your phone attached to your belt. The key pad remains locked until you receive an incoming call. While the key pad is locked, you can still use the Push-To-Talk button on the left side of the phone for Alert button. The R250s PRO is equipped with an alert button on the top Note! Please read the chapter "Guidelines for Safe and Efficient Use" on AB R250S PRO FEATURES Ericsson R250s PRO Third edition (June 2000) This manual is published by Ericsson Mobile Communications AB, without any warranty. Improvements and changes to this manual necessitated by typographical errors, inaccuracies of current information, or improvements to programs and/or equipment, may be made by Ericsson Mobile Communications AB at any time and without notice.

Such changes will, however, be incorporated into new editions of this manual. All rights reserved. ©Ericsson Mobile Communications AB, 1999 Publication number: EN/LZT 108 2554 R1C Printed in Sweden INNOVATRON PATENTS Er ics No so t fo nM r ob Com ile me Co rci mm al un Use ica tio ns Getting Started 3 GSM Pro 89 GSM Pro 90 Preparing Your Phone for Use 4 Turning Your Phone On and Off 14 Display Information and Key Functions 17 Making and Receiving Calls 19 During a Call 24 Speakerphone 26 Functions and Settings 29 Using the Menu System 30 Your Personal Phone Book 33 Keeping Track of Your Phone Calls 42 Your Voice Mail Service 44 Personalizing Your Phone 46 Sending and Receiving Text Messages (SMS) 53 Diverting Incoming Calls 62 Security for Your Phone and Subscription 64 Setting Network Preferences 70 Handling More than One Call Simultaneously 74 Knowing the Call Time/Call Cost 78 Using Two Phone Lines 81 Calling Card or Credit Card Calls 83 Sending and Receiving Fax and Data calls 85 Some Useful Tools 86 Additional Information 97 Accessories 98 Troubleshooting 102 Ericsson Mobile Internet 104 Quick Keys 105 Technical Data 106 Glossary 107 Guidelines for Safe and Efficient Use 112 Warranty 116 Declaration of Conformity 118 Index 119 AB Contents at a Glance Please note! Some of the services in this manual are not supported by all networks. This also applies to the GSM International Emergency Number 112. Er ics No so t fo nM r ob Com ile me Co rci mm al un Use ica tio ns Cellular Phones and Accessories in Combination: Accessories Without Direct Connection to a Cellular Phone: Please contact your network operator or service provider if you are in doubt whether you can use a particular service or not.

The symbol on our products signifies that they have been certified according to the EMC directive 89/336/EEC, the Telecommunications directive 91/263/EEC, and the Low Voltage directive 73/ 23/EEC when applicable. The products fulfil the requirements according to the following standards: ETS 300 342-1 EMC for European digital cellular telecommunications. EN 50081 Electromagnetic compatibility, Generic Emission Standard, and EN 50082 Electromagnetic compatibility, Generic Immunity Standard. AB Er ics No so t fo nM r ob Com ile me Co rci mm al un Use ica tio ns GETTING STARTED Preparing Your Phone for Use Turning Your Phone On and Off Making and Receiving Calls Display Information and Key Functions During a Call Speakerphone AB 4 14 17 19 24 26 4 Er ics No so t fo nM r ob Com ile me Co rci mm al un Use ica tio ns page 112, before using your mobile phone. Note! Please read the chapter "Guidelines for Safe and Efficient Use" on OVERVIEW Front Antenna Alert button Indicator light Mode switch Earpiece/loudspeaker Display Volume keys Push-to-talk button* On/off key Keypad Microphone * If you are not using a SIM Pro card (see "GSM Pro" on page 90), i.e. if you are using a regular SIM card, pressing the Push-to-talk button mutes the microphone, if pressed during a conversation. Preparing Your Phone for Use AB Preparing Your Phone for Use Top Er ics No so t fo nM r ob Com ile me Co rci mm al un Use ica tio ns Indicator Light Back Battery release catch Battery Charging connector Headset connector Earpiece/Loudspeaker Alert Button Connector for external antenna Hole for belt clip ASSEMBLY To use your phone you must: - - - insert the SIM card charge the battery attach the battery to the phone Please see the following pages. Preparing Your Phone for Use AB 5 When you register as a subscriber with a network operator, you get a SIM (Subscriber Identity Module) card. The SIM card contains a computer chip that keeps track of your phone number, the services included in your subscrip- 6 Er ics No so t fo nM r ob Com ile me Co rci mm al un Use ica tio ns tion, and your Phone Book information, among other things.

your phone, you must insert the SIM card as shown below. Inserting the SIM Card 1. Open the lid that covers the SIM card holder. 2. Release the SIM card holder by sliding it in the direction of the arrow. SIM cards come in two sizes. One is the size of a credit card, and the other is smaller. Your phone uses the smaller card. Many credit card-sized SIM cards have a perforated smaller card that you can take out easily. Before you can use To insert the SIM card, remove the battery (if attached) and follow these steps: 3.

Open the holder. 4. Slide the SIM card into the holder. Make certain that the cut corner is in the top right-hand corner. 5.

Lock the holder by pressing it down and sliding it in the direction of the arrow in the picture. 6. Finally, close the lid. Preparing Your Phone for Use AB THE SIM CARD The PIN Enter PIN Most SIM cards are supplied with a security code or PIN (Personal Identity Number), which you need to access the network.

Every time you turn on your phone, it prompts you to enter your PIN.

You will find your PIN in the information from your operator. Er ics No so t fo nM r ob Com ile me Co rci mm al un Use ica tio ns your PIN2. unauthorized use of your subscription. Unblocking Key code), which you also get from your operator. You may need your PIN when you want to change the settings in your phone.



[You're reading an excerpt. Click here to read official SONY](#)

[ERICSSON R250S PRO user guide](#)

<http://yourpdfguides.com/dref/2738049>

Furthermore, some operators may have services that require a second PIN, You should be careful with your PIN, since it is your protection against If your PIN is entered incorrectly three times in a row, the SIM card is blocked. If this happens, you can unlock it by using your PUK (Personal THE BATTERY The R250s PRO comes with a nickel metal hydride (NiMH) battery. The battery is not charged when you buy your phone, but there may be enough power to turn the phone on. We recommend that you charge the battery before you use the phone for the first time. The battery is specially designed for the R250s PRO.

The battery has a special locking mechanism that prevents it from falling off if you should drop the phone on the ground. The battery is equipped with a special rubber sealing to prevent leakage into the phone. With the battery and antenna properly attached, the phone is dust and water-resistant. The phone can be used outdoors, even if it is raining and the phone will not be damaged if you use it in a dusty environment. Use only Ericsson original batteries. By using other batteries you risk damaging the phone and will void the warranty. Preparing Your Phone for Use AB 7 Attaching the Battery 8 Er ics No so t fo nM r ob Com ile me Co rci mm al un Use ica tio ns 1. Attach the battery to the bottom part of the phone. When to Charge the Battery mend that you use only Ericsson original batteries with your phone. a charged one: · · the indicator light on top of the phone starts flashing red.

satisfactorily. Preparing Your Phone for Use 2. Press the upper part of the battery against the phone until you hear two clicks. The nickel metal hydride battery that comes with your phone can be charged whenever you wish without affecting its performance. This is not the case with the cheaper nickel cadmium type batteries, often sold as accessories by other suppliers.

For the best talk and standby time in the long run, we recom- Note! If you charge a new battery, or a battery that has not been used for a long time, it may take a while until you get an indication of charging. To remind you that you will soon need to charge the battery or replace it with an alarm signal (a long beep) sounds and the message Battery low appears for ten seconds in the display. The signal is repeated several times. Note! The phone turns itself off when the battery can no longer power it AB Charging the Battery Er ics No so t fo nM r ob Com ile me Co rci mm al un Use ica tio ns 1. Make sure that the battery is attached to the phone.

2. Connect the charger to the mains. To indicate charging: · · the battery meter in the display pulses continuously. phone is turned on). the indicator on top of the phone shows a steady green light. increases the charging time. phone. See "Desk/Wall Stand" on page 99 for more information. Disconnecting the Charger 3. Connect the other end of the cable to the phone as shown in the picture.

The flash symbol on the plug must face upwards. the indicator on top of the phone shows a steady red light (or green, if the When the battery is fully charged, the battery meter in the display is full and Tip! You can use the phone while the battery is being charged. However, this You can also connect the charger to the desk/wall stand that comes in your box. Just place the phone in the desk/wall stand when you need to charge the · · Push the plug connected to the phone upwards and pull it out. Attach the rubber protector to the system connector. Preparing Your Phone for Use AB 9 Removing the Battery 10 Er ics No so t fo nM r ob Com ile me Co rci mm al un Use ica tio ns 1. Turn off the phone. 2. Press the battery release catch on the top of the battery. Switching Antennas leakage into the phone.

3. Lift the battery up and away from the phone. The R250s PRO comes with two antennas. The longer antenna gives you better receiving signalling when you are within an area with poor radio coverage. Please make sure that you switch antennas during dry conditions, to prevent 1.

Pull out the rubber plug from the external antenna connector. to remove it. 2. Screw the antenna anti-clockwise 3. Attach the new antenna, screwing it clockwise until it is properly attached.

4. Insert the rubber plug into the external antenna connector. Note! Do not use any antennas designed for other type of telephone. The antenna is specially designed for the R250s PRO. With the antenna (and battery) properly attached the phone is water resistant. Using other antennas will void the warranty. Preparing Your Phone for Use AB The Clips The R250s PRO comes with two different clips: · · standard clip swivel clip. Er ics No so t fo nM r ob Com ile me Co rci mm al un Use ica tio ns screw. to press a button to release the phone. Attaching the Swivel Clip 1.

Attach the knob to the battery. Preparing Your Phone for Use The standard clip is a metal belt clip which is attached to the battgency number 112. See "Making and Receiving Calls" on page 19. Turning Your Phone On and Off AB Turning Your Phone On and Off No Network If the message No network is displayed, there is no network within range or the received signal is too weak. You have to move to get a stronger signal. You can also try to replace the antenna with the longer high gain antenna. 13:40 MENU L Clock CLOCK L Set Clock R (14:16) SET CLOCK (14:16) _ : Er ics No so t fo nM r ob Com ile me Co rci mm al un Use ica tio ns INITIAL SETTINGS Display Language the default language is English. language, see "Display Language" on page 46. To change the language to English 1. Press the C L R key.

3. Enter 0000. 2. Press the L E F T arrow key. 4.

Press the R I G H T arrow key. Setting the Time time is not normally set. To set the time R The first time you turn on your phone, you may want to change the language in the display, set the clock and choose the ring signal type. For more information about these settings, see "Personalizing Your Phone" on page 46.

Most modern SIM cards automatically set the display language to the language of the country where you bought your SIM card.

If this is not the case, If your phone displays a language that you do not understand, you can change it to English at any time. For more information on how to change the display For information about the keys, please see "Key Functions" on page 18. The time is shown at the bottom of the display. When you buy your phone, the 1. Press the L E F T or R I G H T arrow key until the Clock menu appears. 2. Press Y E S to enter the clock menu. 3. Press the R I G H T arrow key until Set clock appears. 4.

Press Y E S to enter the Set clock function. 5. Enter the correct time in hours and minutes, using the number keys. 6. Press Y E S to confirm your choice. 7. Press C L R to return to standby mode. Note! The time is by default presented in the 24-hour format.



[You're reading an excerpt. Click here to read official SONY](http://yourpdfguides.com/dref/2738049)

[ERICSSON R250S PRO user guide](http://yourpdfguides.com/dref/2738049)

<http://yourpdfguides.com/dref/2738049>

If you prefer the 12-hour format, you can change the setting. Turning Your Phone On and Off AB No network 15 Setting the Ring Signal Level 1. Press the R I G H T arrow key. MENU L Ring level R (OOOOOqq OOOOOqq) OOOOOqq RING LEVEL L Buzzer R (OOOOOqq OOOOOqq) OOOOOqq The text Ring level and a bar representing the ring signal level appears in the display. 2. Press Y E S to enter the Ring level menu. The text Buzzer appears in the display.

3. Press Y E S to enter the Buzzer menu. · 16 Er ics No so t fo nM r ob Com ile me Co rci mm al un Use ica tio ns 4. Use the R I G H T and L E F T arrow keys to set the ring signal level. Pressing the R I G H T key increases the volume. Pressing the L E F T key decreases the volume. · volume, except for the "Off" and "Step" setting. 5. Press Y E S to save your setting. 6. Press C L R to return to standby mode. The phone rings once with the actual setting as you increase the TURNING YOUR PHONE OFF · In standby mode, press and hold the N O key until you hear a click. Turning Your Phone On and Off AB Er ics No so t fo nM r ob Com ile me Co rci mm al un Use ica tio ns DISPLAY INFORMATION Your phone display helps you to: · · · · · make sure that you are dialling correctly find out if you have received messages check battery level check your signal strength and service availability check which line is in use if you have the Two Line Service Icons in the Display icons and where they appear. The table below shows every icon separately and also gives you an explanation. Icon: 4 2 Description: Signal strength meter 7 8 K 1 Battery meter Keypad lock indicator Divert indicator The keypad is locked.

S Silent ring signal Mm SMS indicator Tt Voice mail indicator B Alarm indicator Display Information and Key Functions Icons are displayed when specific functions are active or if you have received a message. The figure in the margin shows an overview of all the possible The strength of the received signal is indicated in steps. Four steps indicate the strongest signal. The fuller the icon, the more power there is. An arrow means that the Divert all function is on. A crossed note means that no sound can be heard when you receive a call. The envelope icon means that you have received a text message. The tape loops mean that you have received a voice message. The bell shows that the alarm clock has been set and is on. AB 17 Display Information and Key Functions Icon:

Name: L1/L2 Line indicator Fixed incoming calls indicator Description: Tells you which line is in use if you have the Two Line Service. This icon indicates that fixed incoming calls is activated. 18 Er ics No so t fo nM r ob Com ile me Co rci mm al un Use ica tio ns KEY FUNCTIONS table below explains the basic key functions. "Using the Menu System" on page 30. Key: YES NO Before making or receiving a call, it is useful to understand the keys. The Note! Some keys have different functions when you enter the menu system.

See Use: To make and answer calls. To turn the phone on or off (press and hold the key). To end or reject a call. L E F T and R I G H T To access and move (scroll) through the menu system. arrow keys C L R (Clear) To erase digits from the display.

Press and hold the key to erase all digits. To mute the microphone, press and hold the key. To enter the digits 0-9. The 0 key enters the international (+) sign if held down. To enter a star (*) character. If held down it enters a "p" pause. Number keys Star Hash To enter #. To complete the input of PIN and security codes. If held down it enters the character ☒. Volume keys U P and D O W N To increase or decrease the volume of the earpiece or handsfree loudspeaker.

To reject a call, press the volume keys up or down twice. Mode switch GSM: To switch between phone and speakerphone mode. If slide is up the phone is in speakerphone mode; If slide is down the phone is in phone mode. GSM Pro: To switch between phone and "Push-To-Talk" mode. If slide is up, the phone is in Push-To-Talk mode; if slide is down, the phone is in phone mode. Push-to-talk button In standby: to enter and scroll in Phone Book menu. GSM: Push this button to mute the microphone. GSM Pro: Push-to-talk mode, press this button to open microphone. Phone mode, press this button to mute the microphone. Alert button To make alert calls.

Press and hold the alert button. Display Information and Key Functions AB 4 2 NETWORK 7 8 012345678 4 2 15:34 4 2 NETWORK 7 Last 1:35 8 15:36 Er ics No so t fo nM r ob Com ile me Co rci mm al un Use ica tio ns you to do this. See "Setting Network Preferences" on page 70. Key Functions The instructions in this chapter assume that you have turned on your phone and that you are within range of a network. If you are abroad, you may use other networks, provided your home network has an agreement that allows Before making and receiving calls, it is useful to understand the keys and their functions. See "Display Information and Key Functions" on page 17. MAKING A CALL 1. Enter the phone number, including the area code. The digits are shown in the display. If you need to erase a digit, press C L R.

To erase all digits, press and hold the C L R key until all digits have been erased. 2. Press Y E S to make the call. The display shows Calling, followed by Connecting. 3. Press N O when you want to end the call. 0:07 7 8 While a call is in progress, a call time meter in the display shows how long you have been on the phone in minutes and seconds. If you have turned on the Call cost option and your network supports it, you see the price of the call in the display. See "Knowing the Call Time/Call Cost" on page 78. When you end the call the Call time meter shows the duration of the call for three seconds.

Tip! It is possible to check the duration of the call later on. See "Knowing the Call Time/Call Cost" on page 78. No Answer If nobody answers your call or you cannot get through press N O . The number is stored in a memory which makes it easy to repeat the call. Making and Receiving Calls AB 19 Making and Receiving Calls Your phone conveniently lets you re-dial the last phone numbers you have automatically if the connection failed when you first called. To re-dial a previously called number called (15 or more, depending on your SIM card). It can also re-dial a number LAST DIALLED L R 012345678 4 2 NETWORK 7 8 +80123456 20 Er ics No so t fo nM r ob Com ile me Co rci mm al un Use ica tio ns 1. Press Y E S . The display shows the last dialled number. you want to call.

3. Press Y E S to make the call. Automatic Re-dialling To re-dial the number automatically · Press Y E S when the message Retry? appears in the display. The number is automatically re-dialled, up to 10 times: · · beeps and then you hear a ring signal.



[You're reading an excerpt. Click here to read official SONY ERICSSON R250S PRO user guide](http://yourpdfguides.com/dref/2738049)
<http://yourpdfguides.com/dref/2738049>

until you press a key or receive a call.

If you do not want to retry, press N O . Note! Automatic retry is not available for fax and data calls. 2. Scroll with the L E F T and R I G H T arrow keys until you find the number. If the connection fails and the receiver's network supports it, the display shows Retry? on the top row and the reason for the failure on the second row. until the call is answered.

If the re-dialling is successful, the phone MAKING INTERNATIONAL CALLS 1. Press and hold the 0 key until + is displayed. try you are calling from. phone number. The + automatically replaces the international dialling prefix for the coun- 2. Enter the country code, the area code (without the leading zero) and the 3. Press Y E S to make the call. Note! When you are abroad, your phone automatically searches for a network that you are allowed to use. Which networks you can use depends on the agreements your operator has signed with the operators in the country you are visiting. See "Setting Network Preferences" on page 70.

Making and Receiving Calls AB RE-DIALLING A PREVIOUSLY CALLED NUMBER Checking the First Characters If you have entered more characters than can be seen in the display, the first the first characters. characters are replaced by the l symbol. Press the R I G H T arrow key to check Er ics No so t fo nM r ob Com ile me Co rci mm al un Use ica tio ns MAKING ALERT CALLS the number manually. number (112) will be dialled and not the number you have specified. press the button by mistake. To make an alert call using the Alert button 1. Press and hold the A L E R T B U T T O N . set number is the international emergency number 112.) 2. Press N O to end the call.

Making Emergency Calls as when making an ordinary call. To make an emergency call 1. Enter 112 (the international emergency number). 2. Press Y E S . The display shows Emergency. 3. Press N O to end the call. Making and Receiving Calls The R250s PRO is equipped with an Alert button, located on the top of the phone, next to the antenna (see "Overview" on page 4). The alert button makes it easy to set up a call to a pre-set alert number, without having to enter When you buy your phone the alert number (when using the Alert button) is set to the international emergency number 112.

This number can be changed, if you prefer to use another alert number. For more information on how to change the pre-set alert number, see "Personalizing Your Phone" on page 46. Note! If you change the pre-set alert number (112), you must insert a SIM card and enter the PIN code (if the card is locked). Otherwise the pre-set alert To make an alert call the alert button must be switched on. When you buy your phone the alert button is set to on. The alert button must be held down for 1 second, before a call is set up. This is to avoid accidental dialling if you The call is set up and the number dialled is shown in the display. (The pre- You can also make an emergency call by entering the number in the same way Note! Some Network operators may require that a SIM card has been inserted into the phone and, in some cases, that the PIN has been entered as well. Some networks may not use the international emergency number 112. AB 21 When you receive a call, the phone rings and the indicator light on top of the Answer? phone blinks green rapidly.

The display shows Answer?. L MENU Special functions SPECIAL FUNC L Hide ID R 01234567890 22 Er ics No so t fo nM r ob Com ile me Co rci mm al un Use ica tio ns name is shown in the display. call can be received. Answering a Call - Press Y E S to answer the call. · When the call is finished, press N O . Rejecting a Call · There are two ways of rejecting a call: Press the N O key. · have specified. See "Diverting Incoming Calls" on page 62. Tip! To mute the ring signal when you receive a call, press C L R. If your subscription includes the Calling Line Identification service and the caller's network sends the number, you see the caller's number at the bottom of the display.

If the number is stored with a name in the phone book, the Note! The phone must be turned on and within range of a network before a Double click the volume key (up or down) on the side of the phone. The caller hears a busy tone if the caller's network supports this function. If "Divert on busy" is on, the incoming call is diverted to the number you HIDING OR SHOWING YOUR NUMBER With most common subscriptions, the caller's number is sent when a call is made. This means that the receiver can see your phone number when you make a call. However, some operators offer subscriptions where your phone number is normally hidden.

If you want to change the setting for a particular call, this is possible provided the network you use supports it. To hide your phone number for a particular call 1. Enter the phone number you wish to call. 2. Press the R I G H T key.

R The Special functions menu appears in the display. 3. Press Y E S to enter the Special functions menu. 4. Select Hide Id and press Y E S to make the call. Making and Receiving Calls AB RECEIVING A CALL To Show Your Number for a Particular Call 1. Enter the phone number you wish to call. R L 2. Press the R I G H T key. The Special functions menu appears in the display.

3. Press Y E S to enter the Special functions menu. Er ics No so t fo nM r ob Com ile me Co rci mm al un Use ica tio ns 4. Select Show Id and press Y E S to make the call. Making and Receiving Calls 23 SPECIAL FUNC L Send ID R 01234567890 AB MENU Special Functions 24 Er ics No so t fo nM r ob Com ile me Co rci mm al un Use ica tio ns in progress. Your phone has several functions which you might find helpful while a call is CHANGING THE EARPIECE VOLUME During a call you can change the earpiece volume. To change the earpiece volume during a call · Pressing U P increases the volume. · Press the volume key on the side of the phone up or down. Pressing D O W N decreases the volume. · MUTING THE MICROPHONE During a call you may want to talk to someone else in the room without the person on the line hearing the conversation.

To turn the microphone off temporarily during a call 1. Press and hold the C L R key. Mute is shown in the display. 2. Release the C L R key to turn the microphone on again.

Tip! You can also press and hold the Push-to-talk button to mute the microphone. SCRATCH PAD FUNCTION If you need to write down a phone number during a call, you can use the Scratch pad function. To use the Scratch pad · Enter the phone number using the number keys. When you end the call, the number remains in the display. You can now call the number by pressing Y E S or save it in the Phone Book.

See "Your Personal Phone Book" on page 33. Note! If you press any numeric key while on the phone, the person on the other end of the line hears a tone.



[You're reading an excerpt. Click here to read official SONY ERICSSON R250S PRO user guide](http://yourpdfguides.com/dref/2738049)
<http://yourpdfguides.com/dref/2738049>

During a Call AB During a Call To use telephone banking services or control a telephone answering machine, you need to use codes. These codes are sent as tone signals (also known as DTMF tones or touch tones). To send tone signals/codes during a call Er ics No so t fo nM r ob Com ile me Co rci mm al un Use ica tio ns · Press the appropriate keys (09, * and #). See "Your Personal Phone Book" on page 33. of the line hears the tones. Tip! You can also save the code together with a number in the Phone Book. Note! If you send tone signals while on the phone, the person on the other end CHECKING DURATION/COST OF CALL During a call, the display shows the duration of the call in minutes and seconds. If you prefer, you can have the call cost displayed, provided your network and your SIM card support this feature.

See "Knowing the Call Time/ Call Cost" on page 78 for more information. MORE THAN ONE CALL SIMULTANEOUSLY Your phone is capable of handling more than one call simultaneously. You can put the current call on hold, and then make or answer a second call. You can also set up a conference call with up to five people. See "Handling More than One Call Simultaneously" on page 74 on how to use this feature. During a Call AB SENDING TONE SIGNALS 25 26 Er ics No so t fo nM r ob Com ile me Co rci mm al un Use ica tio ns the earpiece/loudspeaker volume significantly. tions over the phone that you need both hands to perform. table can talk to the person on the other end of the line. The R250s PRO is equipped with a speakerphone which, when on, increases The speakerphone is very useful when e.g you need to speak to someone on the phone and continue using both hands. You may, e.g. receive some instruc- The speakerphone is also convenient when you want other people to participate in a conversation. Call the person you want to talk to, switch to speakerphone mode and place the phone on a table e.g.

Now, all the people around the Note! If you are using a GSM Pro SIM card, the speakerphone mode is not available. Please refer to the information in chapter "GSM Pro" on page 90. TURNING ON THE SPEAKERPHONE To turn on the speakerphone you slide the mode switch on the right side of the phone upwards (see "Overview" on page 4). Tip! The phone has different volume settings for phone and speakerphone modes. See "Earpiece Volume" on page 47. Switching Between Phone and Speakerphone Mode You can switch between phone and speakerphone mode at any time: when the phone is in standby; when you receive a call and during a call. When you receive a call you can switch from phone to speakerphone mode or vice versa to answer the call. The call will then be answered in the selected mode. To switch between phone and speakerphone mode · Slide the M O D E S W I T C H upwards to go to speakerphone mode. Slide the M O D E S W I T C H downwards to go to phone mode. When you switch mode the phone sends out a warning tone. · While the phone is in speakerphone mode, do not hold the phone close to your ear as this may cause damage to your hearing. Hold the phone in front of your face around 30-50 cm away and speak into the microphone. Speakerphone AB Speakerphone Er ics No so t fo nM r ob Com ile me Co rci mm al un Use ica tio ns MAKING AND RECEIVING CALLS in phone mode. To make a call in speakerphone mode 1.

Enter the phone number, including the area code, and press Y E S . Do not hold the phone close to your ear during the conversation. 2. Press N O to end the call. To answer a call in speakerphone mode 1. Press Y E S to answer the call. · Do not hold the phone close to your ear during the conversation. the mode switch upwards to go to speakerphone mode. 2. Press N O to end the call.

To reject a call · Press N O or double click the volume key (up or down). Speakerphone Making and receiving calls in speakerphone mode is done in the same way as If your phone is in phone mode you can also answer the call by sliding AB 27 28 Speakerphone Er ics No so t fo nM r ob Com ile me Co rci mm al un Use ica tio ns AB Er ics No so t fo nM r ob Com ile me Co rci mm al un Use ica tio ns FUNCTIONS AND SETTINGS Using the Menu System Your Personal Phone Book Keeping Track of Your Phone Calls Your Voice Mail Service Personalizing Your Phone Diverting Incoming Calls Security for Your Phone and Subscription Setting Network Preferences Knowing the Call Time/Call Cost Using Two Phone Lines Calling Card or Credit Card Calls Sending and Receiving Fax and Data calls Some Useful Tools Sending and Receiving Text Messages (SMS) Handling More than One Call Simultaneously AB 30 33 42 44 46 53 62 64 70 74 78 81 83 85 86 30 Er ics No so t fo nM r ob Com ile me Co rci mm al un Use ica tio ns you want to change a setting in your phone, such as the ring signal. tional options. The menu system allows you to control the phone's functions and to customize it to suit your personal preferences. You use the menu system every time Each menu contains a list of options.

Some menus have sub-menus with addi- MOVING THROUGH THE MENU SYSTEM The menus are arranged in a continuous loop, which you move (scroll) through with the L E F T , R I G H T , Y E S , N O and C L R keys. Press... RIGHT LEFT YES NO to.

.. scroll clockwise through menus or functions. scroll anti-clockwise through menus or functions. select a menu or function, enter a sub-menu. go back one level in the menu system and/or leave a setting unchanged. go back to the standby display. CLR Tip! Instead of pressing the R I G H T or L E F T key repeatedly, you can press and hold it down until you reach the menu or sub-menu you want. Note! If you enter the menu system, but do not press a key within 60 seconds, the phone returns to standby mode. To select a menu or make a setting want.

1. Press the R I G H T or L E F T key until you find the menu or function you 2. Press Y E S to enter the menu or to select the function. setting alternative. 3. Press the R I G H T or L E F T key to find the sub-menu you want or to select a 4. Press Y E S to enter the sub-menu or to confirm the setting. DISPLAY TEXT AND SYMBOLS When you move through the menu system, the display changes. The following hints can help you: · Capital letters are used to indicate the menu or function selected. Using the Menu System AB Using the Menu System · · When L and R are displayed, there are more options you can scroll through with the R I G H T and L E F T keys.

display. Text in brackets shows the current setting of the function shown in the Er ics No so t fo nM r ob Com ile me Co rci mm al un Use ica tio ns play texts in the margins. Data menus. NETWORK 06:01 MENU bookR LPhone bookR MENU Mail MENU levelR LRing levelR QQQQQqq (QQQQQqq QQQQQqq MENU Info L R L MENU L Keylock R On? MENU L MENU L Clock R MENU MENU CalculatorR LCalculatorR MENU L Access R L Settings R In this manual, we have chosen to exclude some of the details above in the pictures of the displays.



[You're reading an excerpt. Click here to read official SONY](http://yourpdfguides.com/dref/2738049)

[ERICSSON R250S PRO user guide](http://yourpdfguides.com/dref/2738049)

<http://yourpdfguides.com/dref/2738049>

This is to make it easier for you understand the dis- Below is an overview of the main menus.

Please note that other menus are available if you subscribe to the two line service and if you have turned on the L Networks R INTERPRETING THE INSTRUCTIONS IN THE MANUAL To help you understand the instructions in this manual, see the example below of how to interpret the instructions.

Example: 1. Scroll to Settings, Y E S , Key sound, Y E S . 2. Select the key sound you want and press Y E S .

Interpret This Instruction As Follows: tings menu. MENU L 1. From the standby mode, use the L E F T or R I G H T keys to scroll to the Set- Settings R Using the Menu System AB R MENU R Divert 31 The arrows on either side of the word Settings mean that you can scroll to another menu. SETTINGS L Ear volume R R (QQQQq QQQQq) QQQQq SETTINGS L Key sound R R (Click) KEY SOUND L Silent 2. Press Y E S to select the Settings menu. chosen is shown in capital letters at the top of the display. Now you are in the Settings menu. The name of the menu that you have 3. Use the L E F T or R I G H T keys to scroll to the Key sound menu. 4.

When you find the Key sound menu press Y E S to select it. 6. Press Y E S to select the key sound. 32 Er ics No so t fo nM r ob Com ile me Co rci mm al un Use ica tio ns 5. Use the L E F T or R I G H T key to find the key sound you want. R The current setting is shown in brackets at the bottom of the display. 7. Press C L R to return to standby. Using the Menu System AB JIM (4) +123456789 JIM (☒4) +81234567890 Er ics No so t fo nM r ob Com ile me Co rci mm al un Use ica tio ns Your Phone Calls" on page 42 for more information. phone book, you see the name in the display. phone numbers with the international (+) sign. Your phone has a phone book in which you can store names and numbers. The phone book also keeps track of your last dialled numbers and, if you subscribe to the Calling Line Identification service (CLI), the last answered numbers. Convenient if you have to call someone back. Please see "Keeping Track of When you receive a call and the caller's number and name is stored in the If you are planning to use your phone abroad, it is a good idea to store all your PHONE BOOK MEMORIES You can store your phone numbers in two different memories: · · the card memory on the SIM card.

the phone memory. Every phone number that you store includes a position number, shown in brackets. If the number is stored in the phone memory (see below) a (☒) is shown in front of the position number. Storing your numbers in the card memory allows you to use the numbers stored on the SIM card even when you change phones, i.e. when you insert your SIM card into another phone. On the other hand, by storing your numbers in the phone memory, they are always available to you on your phone, even if you change SIM cards. The memory positions in the card memory are numbered from 1 upwards. The actual number of memory positions available depends on your SIM card. The phone memory can hold up to 99 phone numbers. The memory positions are labelled ☒1 ☒99. Note! In the Phone Book menu, press # to enter the ☒ character. Outside the 'Phone book' menu, you must press and hold down # to enter the ☒ character. Your Personal Phone Book AB 33 Your Personal Phone Book If you are using a SIM Pro card, see "GSM Pro" on page 90. Some storing positions on the SIM card may be used by your service administrator.

This more information, please contact your service administrator. International Numbers means that you may not be allowed to edit, store or erase these positions. For 34 Er ics No so t fo nM r ob Com ile me Co rci mm al un Use ica tio ns number. · · To enter the '+' sign, press and hold 0. Omit the leading zero in the area code. If you intend to use your phone both at home and abroad, you should store all phone numbers as international phone numbers, that is with the '+' sign which replaces the international dialling prefix for the country you are calling from followed by the country code, then the area code and the phone ENTERING LETTERS You can only enter letters when you are using the phone book and when you are composing text messages (e.g. SMS), see "Sending and Receiving Text Messages (SMS)" on page 53. Press the appropriate key, 19, 0 or #, repeatedly until the character you want appears in the display. Press.

.. 1 to get...
Space - ? ! , . : " ' () I ; < = > ABCÅÄÆÀÇ2 DEFðÉ3 2 3 4 GHİ4 5 6 7 JKL5 MNOÑÖØð6 PQRSβ7 8 TUVÜù8 9 WXYZ 9 0 # 0+ & @ / \$ % £ ¤ ¥ § ; j # * Example
· · To enter an A, press 2 once. To enter a B, press 2 twice. · To enter lower case letters. Enter the letter, e.g. an 'A'. Then press *, an 'a' appears. Lower case letters will now appear until you press * again. Your Personal Phone Book AB · To enter the second letter on the numeric keys straight away, e.g. a 'B', press and hold the volume key upwards, then press 2. To enter the third letter, e.g. a 'C', press and hold the volume key downwards, then press 2.

· · To enter a digit press and hold the desired key. To erase letters to the left of the cursor press C L R. STORE 19 Name: John Doe STORE 19 Name: John Doe Enter no: 0123456 STORE ☒15 Name: John Doe Enter no: 0123456 STORE 34 Bankbyphone 012345678p Er ics No so t fo nM r ob Com ile me Co rci mm al un Use ica tio ns STORING A NUMBER TOGETHER WITH A NAME 1. Scroll to Phone book, Y E S , Store, Y E S . 3. Press Y E S . 2. Enter a name to accompany the phone number. 4. Enter the phone number.
· · 5. You now have four options: position (displayed in the top right-hand corner). To save the number in the card memory, in a position you decide: press the R I G H T key, enter the position and then press Y E S . · press the R I G H T key, press the # key twice and then press Y E S . · press Y E S . the number in the display. Telephone Banking Services tones or touch tones). 1. Scroll to Phone book, Y E S , Store, Y E S . 2. Enter a name to accompany the phone number. Use the numeric keys as described above. 3. Press Y E S . 4. Enter the phone number. character p appears. 7. Press Y E S to store. Your Personal Phone Book Press Y E S to save the number in the card memory, in the first empty To save the number in the phone memory, in the first empty position: To save the number in the phone memory, in a position you decide: press the R I G H T key, press the # key once, enter the position and then Tip! If you enter a number in the scratch pad during a call, you can store it in the Phone Book by selecting Store from the Phone Book menu while you have To use telephone banking services or control a telephone answering machine, you need to use codes.



[You're reading an excerpt. Click here to read official SONY ERICSSON R250S PRO user guide](http://yourpdfguides.com/dref/2738049)
<http://yourpdfguides.com/dref/2738049>

These codes are sent as tone signals (also called DTMF) To store a number together with an account number and security code 5. After entering the phone number, press and hold the * key until the pause 6. Enter the code. If needed, insert another pause, another code and so on. AB 35 To make a call with tone signal codes, proceed as described in "Making and Receiving Calls" on page 19. When you make the call, the phone dials the number, waits until the call is answered and then sends the code. If you and so on. inserted another pause and another code, it pauses again, sends the next code STORE 2 Used Overwrite?

ERASE 19 L John Doe R Erase? ERASE ALL Erase 30 positions? 36 Er ics No so t fo nM r ob Com ile me Co rci mm al un Use ica tio ns OVERWRITE PROTECTION have two options. To store the number in the selected position · Press Y E S to replace the number with the new one. To store the number in a different position 1.

Press N O . 2. Enter the new position number and press Y E S . When a Memory is Full memory that is not full, in this case the card memory. When Both Memories are Full tion number that is already occupied.

To erase a phone number from the phone book memory 1. Scroll to Phone book, Y E S , Erase, Y E S . 3. Press Y E S to erase the number. 2. Enter or scroll to the position number you want to erase. Erase? appears in the display. Press Y E S to erase the number. If you try to store a phone number in a position which already contains a phone number, the message Used Overwrite? appears in the display. You then If you try to store a phone number, e.g. in the phone memory, and the memory you want to store it in is full, the phone suggests a position number in the If both memories are full, no position number is suggested. If you still wish to store the phone number, you have to erase an old number by entering a posi- Tip! You can also recall the number you want to erase by using Name recall or Position recall. When the name appears, press and hold C L R. The message To erase all numbers from the phone memory 1.

Scroll to Phone book, Y E S , Erase all from phone, Y E S . The message Erase 30 positions? appears in the display, where the number indicates the total number of entries stored in the phone memory. 2. To erase all phone numbers from the phone memory, press Y E S . Note! It is not possible to erase all phone numbers from the card memory. Your Personal Phone Book AB Note! If you are using a GSM Pro card (see "GSM Pro" on page 90) some storing positions on the SIM card may be used by your service administrator. This means that you may not be allowed to use these positions for storing your own phone book entries. For more information, please contact your service administrator. NAME RECALL Name: SUE SUE L (6)R R 012345678900 Er ics No so t fo nM r ob

Com ile me Co rci mm al un Use ica tio ns USING THE PHONE BOOK to enter and scroll through your phone book entries. 1.

Press C L R to go to standby (if you are not already in standby). 3. Press Y E S to make the call. Calling a Number in the Phone Book Using the Keypad To recall a phone number using the name 1. Scroll to Phone book, Y E S , Name recall, Y E S .

numeric keys as described above. phone matches the letters with existing names in its memory. 3. Press Y E S . key until you find the correct name and number.

5. Press Y E S to make the call. standby display. number, you can recall the number by using the position. Your Personal Phone Book The Push-To-Talk button on the left side of the phone, (see "Overview" on page 4), makes it very easy to call a number that you have stored in your phone book. To call a number, you only need to press the Push-To-Talk button To call a number in the phone book using the Push-To-Talk button 2. Press and hold the P U S H -TO-TALK button to enter the phone book and scroll through the entries until you find the number you want to call. You can also call a number stored in the phone book by recalling the name stored with it or recalling the memory position that the number is stored in. 2. Enter the name you want to recall (or the first letters of it) using the You do not have to enter the entire name; the first few letters will do.

The The best match between the letters you entered and the names in the Phone Book is displayed. You can also see the storage position in brackets. 4. If the name displayed is not the one you want, press the L E F T or R I G H T Tip! You can also enter the name directly after pressing LEFT from the empty If you know the memory position in which you have stored a certain phone AB 37 To recall a phone number using the position 1. Scroll to Phone Book, Y E S , Position recall, Y E S . NAME RECALL Position: SUE L 2. Enter the position number of the stored phone number. 6 For a position in the card memory, simply enter the number. For a position in the phone memory, press and hold the # key until the 'x' character appears and then enter the number. (6)R R 012345678900 38 Er ics No so t fo nM r ob Com ile me Co rci mm al un Use ica tio ns 3.

Press Y E S . The name and phone number now appear in the display. repeatedly until you find the phone number you want. 4. Press Y E S to call the number. press and hold the # key). The Speed Dialling Facility idea to save positions 19 for important numbers. Example: 1. Enter the number 3. 2.

Press Y E S . If you entered the wrong position number, press the L E F T or R I G H T key Tip! You can also enter the position directly in the standby display and then press the # key to recall the phone number. Do not forget the 'x' before the position if the number is stored in the phone memory (to get the 'x' character, You can call the phone numbers that you store in positions 19 in the card memory by entering the position number and then pressing Y E S . It is a good To call Bob, whose number is stored in position 3 in the card memory: KEEPING THE PHONE BOOK UP TO DATE Sometimes people change their names, their phone numbers or even both. To get the best use out of your phone book, you want the names and numbers to be correct. They are easily changed with the Edit feature. If someone has changed both name and number, it might be easier to overwrite the old storage position with the new one, instead of changing both name and number separately. Note! If you are using a SIM Pro card you may not be allowed to edit the phone numbers that your service administrator are using. There are two ways of finding the Phone Book entry you wish to edit. You can use either the storage position or the name.

Your Personal Phone Book AB To edit an entry using the position EDIT L Find pos Position R 6 1. Scroll to Phone book, Y E S , Edit, Y E S , Find pos. 2. Enter the position number for the entry you wish to edit. For a position in the card memory, simply enter the number.



[You're reading an excerpt. Click here to read official SONY ERICSSON R250S PRO user guide](http://yourpdfguides.com/dref/2738049)
<http://yourpdfguides.com/dref/2738049>

For a position EDIT BOB 012345678900 EDIT L Find name R Name BOB COPY ALL L CardrPhone R r COPY CARD From start Position: _ Er ics No so t fo nM r ob Com ile me Co rci mm al un Use ica tio ns appears and then enter the number. 3. Press Y E S 6 in the phone memory, press and hold the # key until the 'x' character You will now see: the name (displayed in the middle row) the phone number (displayed in the bottom row) the storage position (displayed in the top row) 4. To select the row you wish to edit, press the R I G H T key.

You see the cursor to the right of the row you selected. · the C L R key to erase 5. Edit the row by using: · · the numeric keys to enter letters or digits the L E F T key to move the cursor left (or the R I G H T key to move the cursor right when it is positioned in a row) 6. If needed, press the R I G H T key to select another row and continue editing. 7.

To save the changes, press Y E S . To edit an entry using the name 1. Scroll to Phone book, Y E S , Edit, Y E S , Find name, Y E S . more letters you enter, the better the match. 2.

Enter the name for the entry you wish to edit, using the numeric keys. The 3. To select the entry, press Y E S . 4. You can now continue from step 4 as described above. COPYING PHONE NUMBERS BETWEEN MEMORIES If you want to change SIM card or phone, it is a good idea to copy the phone book entries stored on your SIM card to the phone memory or vice versa. Then you can easily copy the phone book back to the memory of your choice. Also, as you fill up the phone book memories, you might want to move entries from one memory to another. To copy all numbers from card memory to phone memory 1. Scroll to Phone book, Y E S , Copy all, Y E S .

2. Select CardrPhone and press Y E S . r 3. Enter the number of the first position in the card memory you wish to copy to the phone memory and press Y E S . Your Personal Phone Book AB 39 4. Enter the number of the first position in the phone memory you wish to copy to and press Y E S . 5. Press Y E S to start copying. The message Old pos will be erased Start copy? appears in the display. COPY ALL L PhonerCard R r COPY PHONE From start Position: x_ COPY L CardrPhone R r BOB Copy to x29 40 Er ics No so t fo nM r ob Com ile me Co rci mm al un Use ica tio ns not be available.

To copy all numbers from the phone memory to the card memory 1. Scroll to Phone book, Y E S , Copy all, Y E S . 2. Select PhonerCard and press Y E S . r to the phone memory and press Y E S .

copy to and press Y E S . The message Old pos will be erased Start copy? appears in the display. 5. Press Y E S to start copying. To copy numbers from card memory to phone memory one by one 1.

Scroll to Phone book, Y E S Copy, Y E S . 2. Select CardrPhone and press Y E S . and press Y E S . 6 Note! If you are using a SIM Pro card the menu "Copy all CardrPhone" may 3. Enter the number of the first position in the card memory you wish to copy 4. Enter the number of the first position in the phone memory you wish to 3. Enter the number of the first position in the card memory you wish to copy 4. Enter the number of the first position in the phone memory you wish to copy to and press Y E S . 5.

Press Y E S to start copying. The starting position in the card memory is displayed and the next empty position in the phone memory is suggested. · YES NO 6. To continue copying, press one of the following: to copy. · to go to the next position in the card memory. · CLR to copy to another position in either the card or phone memory. Enter the number of the position and press Y E S . · The L E F T and R I G H T key to move between positions in the card memory. To interrupt copying Press C L R twice. · Your Personal Phone Book AB To copy numbers from phone memory to card memory one by one 1.

Scroll to Phone book, Y E S , Copy, Y E S . 2. Select Phone rcard and press Y E S . CLR To copy from the phone memory to the card memory use the Y E S , N O and Er ics No so t fo nM r ob Com ile me Co rci mm al un Use ica tio ns memory one by one" above. Your Personal Phone Book keys as described in "To copy numbers from card memory to phone AB 41 ANSWERED 1 L R 123456789 Erase all? 4 2 NETWORK 7 Calls:2 8 15:49 MENU L Mail MISSED CALLS 16:01 L R 123456789 42 Er ics No so t fo nM r ob Com ile me Co rci mm al un Use ica tio ns CALLING SOMEONE WHO HAS CALLED YOU in the phone memory.

To recall one of the last ten answered numbers 1. Scroll to Phone book, Y E S , Answered calls, Y E S . 2. Select the number you want to call. 3. Press Y E S to make the call. To clear the answered calls memory 1. Scroll to Phone book, Y E S , Answered calls, Y E S . 2. Press C L R. The question Erase all? appears. 3. Press Y E S to erase all numbers from the answered calls memory. If you subscribe to the Calling Line Identification service, and the caller's network sends the number, the numbers of the last ten answered calls are stored UNANSWERED CALLS If you have received calls but have been unable to answer, the number of missed calls is shown in the display in standby mode until you press C L R. Information about the ten last missed calls is saved in the phone memory, which makes it possible for you to see when the calls were received.

If your subscription includes the Calling Line Identification service and the caller's network sends the number, you can also find out who called. If you have stored the number together with a name in the phone book the name also appears. See "Your Personal Phone Book" on page 33. To find out who called and when 1. Scroll to Mail, Y E S , Missed calls, Y E S . R The last caller's number (if your subscription includes the Calling Line Identification service) is now shown in the display together with the time Keeping Track of Your Phone Calls AB Keeping Track of Your Phone Calls (or date) when the call was received. If no information about the caller's number was received, the display shows one of the following: · MISSED CALLS L 19-02-99 R Unidentified Unidentified, which means that no information was available. · Restricted, which means that the caller wanted to withhold the number. Er ics No so t fo nM r ob Com ile me Co rci mm al un Use ica tio ns repeatedly. 3.

Press N O to return to the Missed calls menu. gle between date and time by pressing *. To call a number from the missed calls list 1. Scroll to Mail, Y E S , Missed calls, Y E S . 2.

Select the number you want to call and press Y E S . 3. Press N O to end the call. To erase a number from the missed calls memory 1. Scroll to Mail, Y E S , Missed Calls, Y E S .

2. Select the number you want to erase and press C L R. The question Erase? appears in the display. 3. Press Y E S to erase the number.



[You're reading an excerpt. Click here to read official SONY ERICSSON R250S PRO user guide](http://yourpdfguides.com/dref/2738049)
<http://yourpdfguides.com/dref/2738049>

Keeping Track of Your Phone Calls 2. To see your other unanswered calls, press the **L E F T** or **R I G H T** arrow key Note! If you check a missed call the same day as you received it, the time of the call is displayed. Otherwise, the time is replaced by the date. You can tog- **AB 43 4 2 Voicemail Check? 4 NETWORK 2 Tt 19:09 44 Er ics No so t fo nM r ob Com ile me Co rci mm al un Use ica tio ns subscription. 7 8 Note! Not all operators have this service.**

The service also depends on your The answering service of your network allows callers to leave a voice message when you cannot answer your calls. When you receive a voice mail, an alert signal sounds, if turned on, and the voice mail icon appears in the display. 7 8 Whenever you have a waiting voice mail waiting for you a **Tt** symbol is shown at the bottom of the display. Further information about the use of the answering service is found in the information supplied by your network operator. Note! Some operators may inform you of a waiting voice mail by sending a SMS (see "Sending and Receiving Text Messages (SMS)" on page 53). **ENABLING THE VOICE MAIL FUNCTION** On most SIM cards the number to the Voice mail service is stored on the SIM card. If the number cannot be retrieved from your SIM card, you need to enter the phone number yourself. To enter the phone number to the voice mail service 1. Scroll to **Mail, Y E S , Set VoiceM, Y E S , New number, Y E S . 2.**

If no number appears, enter the new number. 3. Press **Y E S** to confirm your new number. To enable the Voice mail function on your phone 1. Scroll to **Mail, Y E S , Set VoiceM, Y E S .**

2. Select **On** and press **Y E S . CALLING YOUR VOICE MAIL** When you receive a voice mail, this is indicated in the display by the message **Voicemail Check?**. You can now check your message by pressing **Y E S .** If you press **N O** , you can call the answering service at any time later on to lis- ten to your recorded messages.

To do this: Your Voice Mail Service **AB Your Voice Mail Service · Scroll to Mail, Y E S , Voice mail, Y E S .** The phone automatically calls your voice mail. Follow the instructions given to you by your operator's answering service. Tip! You can also call your voice mail number by pressing and holding **1** in **Er ics No so t fo nM r ob Com ile me Co rci mm al un Use ica tio ns** To change your voice mail number 1. Scroll to **Mail, Y E S , Set VoiceM, Y E S , New number, Y E S . 2. Enter the new number and press Y E S .** To change the voice mail alert signal 1. Scroll to **Settings, Y E S , Mail Alert, Y E S . 2.**

Select the alert signal you want and press **Y E S .** To turn the voice mail off 1. Scroll to **Mail, Y E S , Set VoiceM, Y E S . 2. Select Off and press Y E S .** Your Voice Mail Service 45 standby mode. **AB SETTINGS L Language R (Auto) SETTINGS L Alert key 46 Er ics No so t fo nM r ob Com ile me Co rci mm al un Use ica tio ns** to your phone. The Settings menu includes a number of functions which lets you adapt your phone to your own personal preferences. Some of the settings are only affected if you have external equipment (e.g.

handsfree equipment) connected **DISPLAY LANGUAGE** Most modern SIM cards automatically set the display language to the language of the country where you bought your SIM card. If this is not the case the default language is English. To change the display language 1. Scroll to **Settings, Y E S , Language, Y E S .** The currently selected language is shown in brackets.

2. Select the language you want and press **Y E S .** Note! If by accident you end up with a language you do not understand, you can return to English by pressing **L E F T 0000 R I G H T** at any time. **ALERT BUTTON** The R250s PRO is equipped with an Alert button located on the top of the phone, next to the antenna (see "Overview" on page 4). By pressing and holding the alert button you can easily set up a call to a pre-defined alert number, without having to dial the number in the ordinary way.

When you buy your phone, the alert number (when using the Alert button) is set to the international emergency number 112. This number can be changed, if you prefer to use another alert number. Note! If you change the pre-set alert number (112), you must insert a SIM card and enter the PIN code (if the card is locked). Otherwise the pre-set alert number (112) will be dialled and not the number you have specified. **R** You must turn on the alert function before you can use the alert button. When you buy your phone the alert button is activated. **Personalizing Your Phone AB Personalizing Your Phone To turn the Alert button on or off ALERT KEY L On R 1. Scroll to Settings, Y E S , Alert key, Y E S . 2. Select On or Off and press Y E S .**

To change the alert number **PHONE BOOK Alert L Number R EAR VOLUME SPEAKER LQQQQQqqqR Er ics No so t fo nM r ob Com ile me Co rci mm al un Use ica tio ns Phone Book"** on page 33 3. Press **Y E S** to confirm your new alert number. 1. Scroll to **Phone book, Y E S , Alert number, Y E S . 2. Edit the number in the same way that you edit other phone book entries. You can also associate a name with the alert number. See "Your Personal Note! If fixed dialling is activated, the alert number must be included in this list. If it is not included, you cannot use the alert button to make an alert call. However, if the alert number is the international emergency number 112 you do not have to include it in the fixed dialling list.**

For more information about fixed dialling, see "Fixed Dialling and Fixed Incoming Calls" on page 68. **EARPIECE VOLUME** There are two separate volume settings for your phone, depending on which mode, **Phone or Speakerphone**, you have currently selected. The mode currently selected is displayed in the middle row when you enter the Ear volume menu. You can have independent volume settings when you use the phone together with different handsfree equipment. This means that if you set the earpiece volume when the phone is connected to handsfree equipment, the volume setting when the phone is handheld is not affected and vice versa.

Note! If you are using a SIM Pro card there will be a volume setting for the Push-to-talk mode instead of the speakerphone mode. See "Earpiece volume" on page 91. To set the earpiece volume 1. Scroll to **Settings, Y E S , Ear volume, Y E S .** The current mode, **Phone or Speakerphone**, is displayed in the middle row.

Use the **R I G H T** key to increase the volume. 2. Use the **L E F T** key to decrease the volume. 3. Press **Y E S** to confirm your volume setting. Tip! During a call you can use the volume keys at the side of the phone to adjust the volume. Note! When you switch the phone to **Speakerphone mode (or Push-to-talk mode)** the loudspeaker volume increases significantly. Do not hold the phone **Personalizing Your Phone AB 47** close to your ear during a conversation as it may cause damage to your hearing.



[You're reading an excerpt. Click here to read official SONY ERICSSON R250S PRO user guide](http://yourpdfguides.com/dref/2738049)
<http://yourpdfguides.com/dref/2738049>