



Your PDF Guides

You can read the recommendations in the user guide, the technical guide or the installation guide for SMC GS16-SMART. You'll find the answers to all your questions on the SMC GS16-SMART in the user manual (information, specifications, safety advice, size, accessories, etc.). Detailed instructions for use are in the User's Guide.

User manual SMC GS16-SMART User guide SMC GS16-SMART Operating instructions SMC GS16-SMART Instructions for use SMC GS16-SMART Instruction manual SMC GS16-SMART

Package Contents

After unpacking the SMC GS16/24 Smart, please check the contents of the box to be sure you have received the following components:

- One SMC GS16 Smart or SMC GS24 Smart
- Four rubber feet
- One Power Cord
- One Installation Guide
- One CD-ROM containing the User Guide
- One Warranty Card

Immediately inform your dealer in the event of any incorrect, missing or damaged parts. If possible, please retain the carton and original packing materials in case there is a need to return the product.

Please register this product to receive the full warranty at SMC's Web site: <http://www.smc.com>

System Requirements

The following are required:

- To attach a device (e.g. a PC) to your Smart switch, the device must have a working Ethernet port. Your Smart switch can communicate at 10, 100 or 1000 Mbps.
- To connect devices to your Smart switch at the maximum data rate you will need to use Cat 5 or 5e Ethernet cable, one cable for each device.
- A PC with a CD-ROM drive is required to read the User Guide.

Information furnished by SMC Networks, Inc. (SMC) is believed to be accurate and reliable. However, no responsibility is assumed by SMC for its use, nor for any infringements of patents or other rights of third parties, which may result from its use. No license is granted by implication or otherwise under any patent or patent rights of SMC. SMC reserves the right to change specifications at any time without notice.

SMC Networks, Inc.
38 Tesla
Irvine, CA 92618

Copyright © SMC Networks, Inc., 2005. All rights reserved.
SMC is a registered trademark. Other product and company names are trademarks or registered trademarks of their respective holders.

FOR TECHNICAL SUPPORT, CALL:
From U.S.A. and Canada
(24 hours a day, 7 days a week)
(800) SMC-4 YOU
From Europe: Contact details can be found
on www.smc.com

INTERNET
E-mail addresses:
techsupport@smc.com

World Wide Web:
<http://www.smc.com/>
If you are looking for further
contact information, please visit:
www.smc.com

38 Tesla
Irvine, CA 92618
Phone: (949) 979-8000
Model Number: SMC GS16-Smart /
SMC GS24-Smart

Hardware Description

Your SMC Smart switch should be regarded as a managed switch, optimized for simpler and smaller network configurations. It provides sophisticated, user-configurable features well beyond the capability of an unmanaged switch. Your Smart switch supports security (VLANs), port aggregation (Trunking), detailed diagnostics (Statistics and Port Mirroring) and bandwidth control (QoS, Rate Limiting and Broadcast Storm Control). These features are described in detail in the User Guide.

1. Power LED

When this green LED is on, the switch is powered up.

2. Link/Act and 1000/100M LEDs

The Link/Act LED and 1000/100M LEDs are arranged in pairs; one on top of the other with a number separating them. The two LEDs are associated with the Ethernet port indicated by the number (see 3 below). The green Link/Act LED turns on when there is an connection to the corresponding Ethernet port and flashes to indicate that data is being sent or received over the connection. The 1000/100M LED indicates the speed of the connection: The LED turns green to indicate 1000Mbps, orange to indicate 100Mbps and turns off to indicate 10Mbps.

3. Ethernet Ports

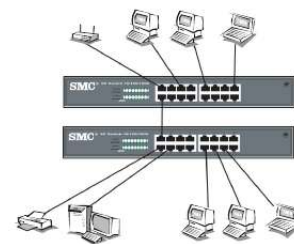
There will be either 16 or 24 ports depending on the model of SMC Smart Switch you have purchased. These ports can be connected to PCs, network printers, wireless access points, gateways or similar devices. Note the number written on the front panel, next to each port. These numbers are used throughout the Web management interface to refer to specific Ethernet ports. The numbers are also used to associate the front panel Link/Act and 1000/100M LEDs to the appropriate Ethernet port.

Hardware Installation

When locating your switch, please ensure that:

- The ambient temperature and humidity are within the specified ranges.
- There is sufficient space at the sides to allow sufficient air flow. A minimum of two inches (5cm) is recommended.
- The Cat 5, twisted pair cables that you use to connect network devices should be routed away from power lines and other sources of electrical interference e.g. radio transmitters.
- A properly grounded power outlet is used.
- A surge filter/suppressor is used to protect the switch from high-voltage spikes.

When connecting network devices to your Smart Switch, use a Cat 5 or Cat 5e cable of 328ft (100m) or less.



[You're reading an excerpt. Click here to read official SMC GS16-SMART user guide](http://yourpdfguides.com/dref/3456302)
<http://yourpdfguides.com/dref/3456302>

Manual abstract:

It provides sophisticated, user-configurable features well beyond the capability of an unmanaged switch. Your Smart switch supports security (VLANs), port aggregation (Trunking), detailed diagnostics (Statistics and Port Mirroring) and bandwidth control (QoS, Rate Limiting and Broadcast Storm Control).

@@@ Your Smart switch can communicate at 10, 100 or 1000 Mbps. · To connect devices to your Smart switch at the maximum data rate you will need to use Cat 5 or 5e Ethernet cable; one cable for each device. · A PC with a CD-ROM drive is required to read the User Guide. 2. Link/Act and 1000/100M LEDs The Link/Act LED and 1000/100M LEDs are arranged in pairs; one on top of the other with a number separating them. The two LEDs are associated with the Ethernet port indicated by the number (see 3 below). The green Link/Act LED turns on when there is an connection to the corresponding Ethernet port and flashes to indicate that data is being sent or received over the connection. The 1000/100M LED indicates the speed of the connection: The LED turns green to indicate 1000Mbps, orange to indicate 100Mbps and turns off to indicate 10Mbps.

Using The EZ 3Click Wizard Hardware Installation Menu Overview SMC GS16-Smart / SMC GS24 Hardware Installation 3. Ethernet Ports There will be either 16 or 24 ports depending on the model of SMC Smart Switch you have purchased. These ports can be connected to PCs, network printers, wireless access points, gateways or similar devices. Note the number written on the front panel, next to each port. These numbers are used throughout the Web management interface to refer to specific Ethernet ports.

The numbers are also used to associate the front-panel Link/Act and 1000/100M LEDs to the appropriate Ethernet port. Menu Overview EZ Switch™ 10/100/1000 16/24-Port SMC GS16-Smart / SMC GS24-Smart Smart Gigabit Switches 3 1 2 Information furnished by SMC Networks, Inc. (SMC) is believed to be accurate and reliable. However, no responsibility is assumed by SMC for its use, nor for any infringements of patents or other rights of third parties, which may result from its use. No license is granted by implication or otherwise under any patent or patent rights of SMC.

SMC reserves the right to change specifications at any time without notice. SMC Networks, Inc. 38 Tesla Irvine, CA 92618 Copyright © SMC Networks, Inc., 2005. All rights reserved. SMC is a registered trademark; Other product and company names are trademarks or registered trademarks of their respective holders. Troubleshooting Note: a few seconds after the power cord is connected to the switch, all the LEDs will flash once. This is perfectly normal.

@@@ A minimum of two inches (5cm) is recommended. @@ radio transmitters.

· A properly grounded power outlet is used. @@@@4. @@@@5. @@@@2. @@3. @@@@ Otherwise you will have to set your PC's IP address manually. @@@@ No other configuration changes are required at this stage but it is recommended that you change the administrator's password before logging out. To change the password click on the SYSTEM→ Password menu-choice and fill in all the fields on the Password Settings page before clicking on the APPLY button. allation Using The EZ 3Click Wizard Troubleshooting Initial Configuration SMC GS16-Smart / SMC GS24-Smart Hardware Installation Menu Overview All of the configuration of your SMC Smart Switch will be done using the Web, Management Interface. If you are familiar with the concepts of a Managed Layer 2 switch, you should have no problem navigating the user interface; just open your Web Browser, enter the address of the switch, login and you are ready to go (http://192.

168.2.10 is the default address and smcadmin is the default password). The screenshot on the right shows the first page that you will see after logging in. The page is laid out as follows: · At the top of the screen is the front-panel image.

Ports on the image turn green to show that the port is connected to a network device. If you allow your mouse to hover over a port , the port-number will be displayed. · On the left of the screen is the Menu. Single-clicking on a Menu-choice will change the page displayed on the right-hand (Main Page) side of the screen. · The content of the Main Page (on the right) will change when you make different Menu choices.

The Main Page is where switch parameters are displayed and edited. Not all pages can be edited but, where parameters can be changed, you will find three buttons at the bottom of the page; HELP, APPLY and CANCEL. Use the HELP button if you are unsure what you need to do. None of your edits will be saved until you click on the APPLY button and you can use the CANCEL button to discard all your edits. If you are new to managed switches, see the User Guide for a detailed explanation of: · Configuring ports and diagnosing network problems. @@ · Adding ports to VLANs to improve network security. @@@ Remove the power cord from the back of the Switch. 2. Remove all cables from the front-panel Hardware Installation ports. 3.

@@4. Reconnect the power cord to the rear of the Switch. Menu Overview seconds before disconnecting port 1 from port 2 5. Wait at least 40 Menu Note that, after following this procedure, all of the switch's configuration including password and IP address will be reset to factory defaults; the password will be smcadmin and the Switch IP address will be reset to 192.168.2.10. Main Page .



[You're reading an excerpt. Click here to read official SMC GS16-SMART user guide](http://yourpdfguides.com/dref/3456302)
<http://yourpdfguides.com/dref/3456302>