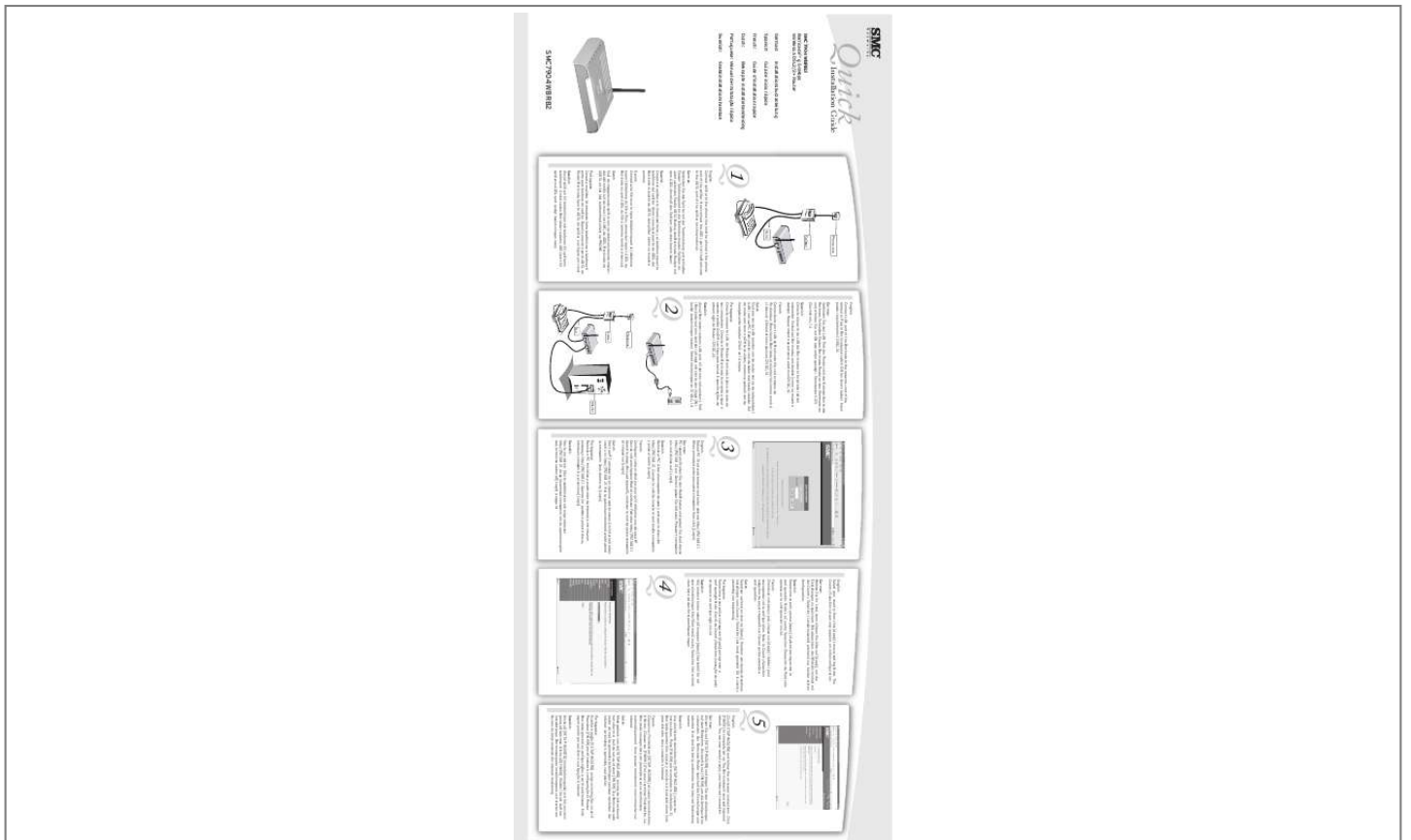




Your PDF Guides

You can read the recommendations in the user guide, the technical guide or the installation guide for SMC 7904WBRB2. You'll find the answers to all your questions on the SMC 7904WBRB2 in the user manual (information, specifications, safety advice, size, accessories, etc.). Detailed instructions for use are in the User's Guide.

User manual SMC 7904WBRB2
User guide SMC 7904WBRB2
Operating instructions SMC 7904WBRB2
Instructions for use SMC 7904WBRB2
Instruction manual SMC 7904WBRB2



[You're reading an excerpt. Click here to read official SMC 7904WBRB2 user guide](http://yourpdfguides.com/dref/3456118)
<http://yourpdfguides.com/dref/3456118>

Manual abstract:

*@@Swedish: Anslut splittern till telefonlinjen och telefonen till splitterns telefonport. You are now ready to enjoy your Internet connection. When prompted enter password smcadmin then click [Login]. And Canada (24 hours a day, 7 days a week) (800) SMC-4-YOU Phn: (949) 679-8000 Fax: (949) 679-1481
World Wide Web: [http://www. smc. @@ smc. @@@@SMC](http://www.smc.@@smc.@@@@@@SMC) reserves the right to change specifications at any time without notice. @@.*



[You're reading an excerpt. Click here to read official SMC](#)

[7904WBRB2 user guide](#)

<http://yourpdfguides.com/dref/3456118>