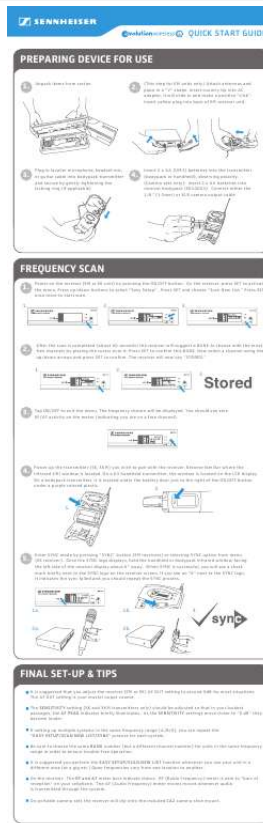




Your PDF Guides

You can read the recommendations in the user guide, the technical guide or the installation guide for SENNHEISER EW 300-2 IEM G3. You'll find the answers to all your questions on the SENNHEISER EW 300-2 IEM G3 in the user manual (information, specifications, safety advice, size, accessories, etc.). Detailed instructions for use are in the User's Guide.

User manual SENNHEISER EW 300-2 IEM G3
User guide SENNHEISER EW 300-2 IEM G3
Operating instructions SENNHEISER EW 300-2 IEM G3
Instructions for use SENNHEISER EW 300-2 IEM G3
Instruction manual SENNHEISER EW 300-2 IEM G3



[You're reading an excerpt. Click here to read official SENNHEISER EW 300-2 IEM G3 user guide](http://yourpdfguides.com/dref/3921482)
<http://yourpdfguides.com/dref/3921482>

Manual abstract:

@@(Camera sets only): Insert 2 x AA batteries into receiver bodypack (EK100G3). Connect either the 1/8" (3.5mm) or XLR camera output cable FREQUENCY SCAN 1. 1. Power on the receiver (EM or EK unit) by pressing the ON/OFF button. On the receiver, press SET to activate the menu. Press up/down buttons to select "Easy Setup". @@Press SET to confirm this BANK. @@The receiver will now say "STORED." 1.

2. 3. 3. Tap ON/OFF to exit the menu. The frequency chosen will be displayed.

@@Become familiar where the infrared (IR) window is located. @@@@2a. 1b. @@The AF OUT setting is your master output volume. @@As the SENSITIVITY settings move closer to "0 dB" they become louder.

@@@It is suggested you perform the EASY SETUP/SCAN NEW LIST function whenever you use your unit in a different area (at a gig etc.) Open frequencies vary from one location to another. On the receiver: The RF and AF meter bars indicate status. @@The AF (Audio Frequency) meter moves moves whenever audio is transmitted through the system. .



[You're reading an excerpt. Click here to read official SENNHEISER EW 300-2 IEM G3 user guide](http://yourpdfguides.com/dref/3921482)
<http://yourpdfguides.com/dref/3921482>