



Your PDF Guides

You can read the recommendations in the user guide, the technical guide or the installation guide for RANE TTM 57SL. You'll find the answers to all your questions on the RANE TTM 57SL in the user manual (information, specifications, safety advice, size, accessories, etc.). Detailed instructions for use are in the User's Guide.

User manual RANE TTM 57SL
User guide RANE TTM 57SL
Operating instructions RANE TTM 57SL
Instructions for use RANE TTM 57SL
Instruction manual RANE TTM 57SL

RANE | serato | DATA SHEET

TTM 57SL

PERFORMANCE MIXER

DESCRIPTION

The TTM 57SL Performance Mixer integrates Serato Scratch Live with the best of Rane's hardware. Now you can control Scratch Live from your mixer without touching your laptop!

SCRATCH LIVE CONTROL SURFACE
Navigate through your library, load tracks, hit cues, loop and control effects all from the mixer's control panel.

FUTURE PROOF
The features and functionality of your mixer will improve with each new release of the Scratch Live software — and all Scratch Live updates are free!

ADVANCED RECORDING
Record your mix directly to hard drive, or record two analog sources simultaneously.

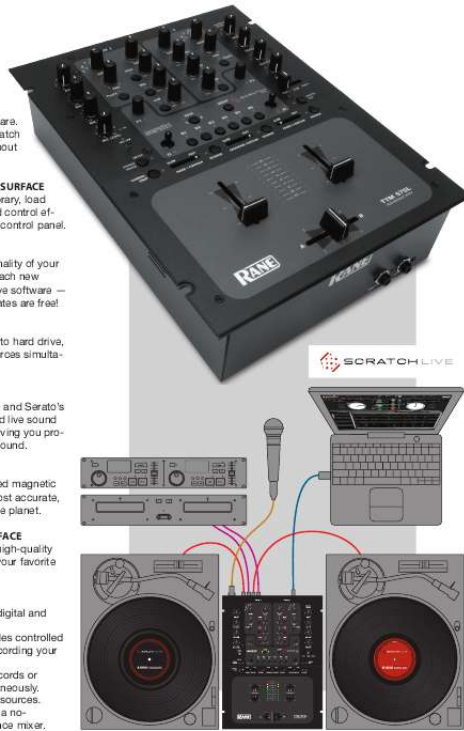
EFFECTS
24-bit effects using Rane and Serato's award-winning studio and live sound software technologies, giving you professional studio-quality sound.

MAGNETIC FADERS
Rane's legendary patented magnetic faders are the fastest, most accurate, and longest-lasting on the planet.

EXTERNAL AUDIO INTERFACE
Use the TTM 57SL as a high-quality USB audio interface for your favorite Mac or PC software.

SIMULTANEOUSLY:

- Play a combination of digital and analog sources.
- Play up to two digital files controlled by vinyl or CD while recording your mix.
- Or, digitize two vinyl records or analog sources simultaneously.
- Cue analog and digital sources.
- Operate standalone as a no-compromise performance mixer.



[You're reading an excerpt. Click here to read official RANE TTM 57SL user guide](http://yourpdfguides.com/dref/3538791)

<http://yourpdfguides.com/dref/3538791>

Manual abstract:

Now you can control Scratch Live from your mixer without touching your laptop! **SCRATCH LIVE CONTROL SURFACE** Navigate through your library, load tracks, hit cues, loop and control effects all from the mixer's control panel. **FUTURE PROOF** The features and functionality of your mixer will improve with each new release of the Scratch Live software -- and all Scratch Live updates are free! **ADVANCED RECORDING** Record your mix directly to hard drive, or record two analog sources simultaneously. **EFFECTS** 24-bit effects using Rane and Serato's award-winning studio and live sound software technologies, giving you professional studio-quality sound. **MAGNETIC FADERS** Rane's legendary patented magnetic faders are the fastest, most accurate, and longest-lasting on the planet. **EXTERNAL AUDIO INTERFACE** Use the TTM 57SL as a high-quality USB audio interface for your favorite Mac or PC software. **SIMULTANEOUSLY:** · Play a combination of digital and analog sources. · Play up to two digital files controlled by vinyl or CD while recording your mix. @ · Cue analog and digital sources. @@ Easily import your playlists and iTunes library. @@@ Built-in help and tips in multiple languages are accessible anytime.

Different operating modes can be assigned to each Virtual Deck. **Absolute Mode** -- exact reproduction of record movement, needle drop through tracks just like normal vinyl. The beginning of the track is mapped to the start of the record. **Relative Mode** -- skip-free scratching, jump to cue points, and pitch bend buttons combined with turntable control. This mode observes the relative forward and backward movement of the record, but does not regard the position within the record.

Internal Mode -- mix with just your laptop using features modeled on DJ CD players. Rewind, Bend down, Play / pause reverse, Play / pause forward, Bend up, Fast forward. **Auto mode** -- play a sequence of tracks automatically. Tempo display assists with rapid tempo matching of tracks. When the two tracks are matched to the same tempo, the peaks will line up.

Beat display emphasizes the transients in tracks -- these are matched up when the two tracks are beat matched. **SCRATCHLIVE.NET** New features are always being added and improved, and the latest version is a free download. Scratchlive.net is also the best place for technical support and performance tips from thousands of other DJs. Record from your Mic and immediately scratch as if it was on vinyl. **VIDEO-SL PLUG-IN** Video-SL is an optional software plugin for Scratch Live adding the ability to play and mix video files. Manage video clips from within the Scratch Live library and load them onto a virtual deck for control with vinyl or CD. The TTM 57SL controls allow mixing clips with a variety of transitions, as well as apply exciting effects. @@ See www.

serato.com for details. @@@@ As the vinyl rotates, so does the line on the label. @@ The time and remaining time are displayed in minutes and seconds. @@@@ Side B: 15 minutes. Continuous control signal on vinyl allows smooth accurate scratching. @@@@ They also assign the Internal Digital Effects when the mixer is operated stand-alone without a computer. Six different preset groups optimize common controls for playback, cue/looping, effects, recording and library, or customize any control with a right-click. Footswitch controls are mapped here as well. Browse your music collection by album, artist, BPM, or genre, with optional album art display.

Intuitive search function can be applied to any field to find things quickly. Edit ID3 tags with full Unicode support. **TTM 57SL PERFORMANCE MIXER** TTM 57SL MADE IN U.S.A.

RANE CORP. U.S. PATENT 6,813,361 COMMERCIAL AUDIO EQUIPMENT 24TJ AUX OUT IN L L PGM 2 4 L PGM 1 2 L L MIC LINE 1 ON 2 3 4 3 1 R POWER PHONO PHONO GROUNDS R R R R BALANCED INPUT .7" MAX PROJECTION (WITHOUT CABLES) ACN 001 345 482 BALANCED UNBALANCED 100-240V 50/60 Hz 20 WATTS USB RIGHT MAIN LEFT RIGHT BOOTH LEFT RIGHT LEFT RIGHT LEFT SEND RETURN FlexFX MINIMUM SYSTEM REQUIREMENTS · At least one turntable or CD player.

· Computer with USB 1 port (USB 1.1). · Screen res. 1024 x 768 or higher. · Hard drive space for storing music. Mac · 1 GHz G4 with 1 GB RAM · OSX 10.3.9 or higher · Intel Mac compatible Windows · 1.5 GHz PC with 1 GB RAM · Windows XP with Service Pack 2 or higher, or Vista. We recommend Windows XP over Vista for performance reasons.

By using XP, you can have a lower latency (for a better vinyl feel) and better performance in general. Note: This is the minimum requirement to run Scratch Live. We recommend a higher spec computer, and if you have a large library, you will benefit from having more RAM. Note: No sound card is necessary.

WHITELABEL.NET Do you want the latest tracks before anyone else? Whitelabel.net is the source for the freshest new music. Download free promo tracks in several genres, that play in full fidelity only in Serato Scratch Live. 10" **HARDWARE FEATURES** · 4 switchable phono/line inputs. @@ Analog inputs are phono / line switchable.

· Input Gain and Left / Right Pans. · Mic Input has Level & Tone controls. · 3-band, full-cut EQ with kills. @@ Magnetic non-contact Channel Faders and Crossfader. No travel noise - No bleed - Ever! · Independent Contour and Reverse controls with Channel Swap.

· PGM Cue Pan, Master Mix select and Headphone Level control. · Both 1/4" and 3.5mm headphone output jacks. @@@@ "Soft" mixer controls used by Scratch LIVE and the internal effects · Programmable foot switch input (Up to 3-button control; foot switch not included). · Internal universal power supply works anywhere (100-240 VAC).

MAC WIN 12.8" 13.3" .8" MAX PROJECTION .3" MAX PROJECTION 3.0" USB 3" 3.1" · Front Panel Size: 13.3"H x 10"W (33.8 cm x 25.4 cm) · Coffin Depth: 3" (7.

7 cm) · Mixer Weight: 8.5 lb (3.8 kg) · Shipping Size: 7.75"H x 12.75"W x 19.25"D (19.7 x 32.5 x 49 cm) · Shipping Weight: 12 lb (5.5 kg) **FOOT SWITCH 9" HEADPHONES** © 2008 Rane Corporation. All rights reserved.

Scratch Live and the Scratch Live logo are the trademarks of Serato Audio Research. Trademarked in the U.S. and other countries. Licensed exclusively to Rane Corporation.

©Rane Corporation 10802 47th Ave. W., Mukilteo WA 98275-5098 TEL 425-355-6000 FAX 425-347-7757 WEB www.rane.com All features & specifications subject to change without notice.

18048 - 11-08 .



[You're reading an excerpt. Click here to read official RANE TTM 57SL user guide](http://yourpdfguides.com/dref/3538791)
<http://yourpdfguides.com/dref/3538791>