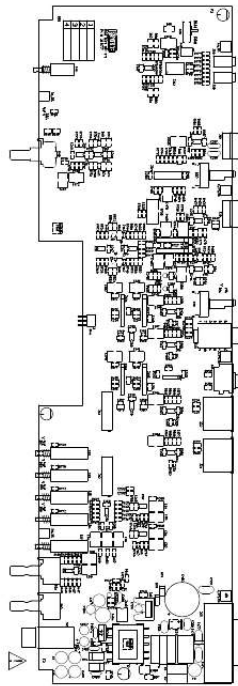




Your PDF Guides

You can read the recommendations in the user guide, the technical guide or the installation guide for RANE MP 44. You'll find the answers to all your questions on the RANE MP 44 in the user manual (information, specifications, safety advice, size, accessories, etc.). Detailed instructions for use are in the User's Guide.

User manual RANE MP 44
User guide RANE MP 44
Operating instructions RANE MP 44
Instructions for use RANE MP 44
Instruction manual RANE MP 44



RANE Corp. 1429-955-0000
104249 DES. BOTTOM MP 44 SHEET 1 OF 2
ACTION: NEW PRODUCT P&ID 11001109



[You're reading an excerpt. Click here to read official RANE MP 44 user guide](http://yourpdfguides.com/dref/3395479)
<http://yourpdfguides.com/dref/3395479>

Manual abstract:

OK R244 10.0K 6 54 STACK C277 220PF R249 7T . 10.0K J7B FROM SH5 MIC1_EFF_SND J36B J7A R250 RETURN TO SH5 MIC1 TONE IN J36A STACK 10 11 8R 12 J5A COMBO 4 1 2 + 3- 9S 3 8 +15 10.0K GND GND MC33078 Z12A 2 4 1 C148 R252 10.0K GND 0.1 -15 R251 10.0K C534 47PF C289 22/16 3 TO SH5 J36C MIC1_EFF_RTN + 47/50 GND AUX MIC C274 220PF . @@R245 5 Z12B MC33078 7 R246 RETURN 10 11 8R 10.0K 9S GND 10.

OK +15 C141 GND MC33078D 2 Z11A 0.1 1 C288 6 TO SH5 J36F MIC2_EFF_RTN (20 dB) 22/16 -15 R247 10.0K C535 47PF INPUT PCB ACTION: MIC INPUTS MP 44 DRAWN BY: CHECKED BY: 10802 47th Avenue West Mukilteo WA 98275-5098 SHEET: 2 of 18 104616 FROM SH1 1 CH1L J1A C29 R501 5.11K 47PF +12C151 22/16 2 J37B 8 R453 100K 2 0.1 MC33078 Z14A 1 3 C293 R423 3 CH1 GAIN TRIM +/- 12 dB 2 R1A 20KB R502 5.

11K -12 D9 LS4148 R451 8 J37H J37C J37D 3 4 -15 5 J37E J37F 6 GND D10 LS4148 Z14B MC33078 S9B 2P2T C292 22/16 7 10 D14 LS4148 C291 100K GND C149 0.1 1 R253 R254 10.0K 10.0K 8 4 S7B 5 6 2P2T +15 R256 3 4 TL072 -15 R255 10.0K 10.

OK R488 4.42K GND Z13A 2 D38 R +15 +15 R454 100K GND 4 1 TO SH8 TONE 1L S9A 2P2T 1 2 3 P1 UP 2.00K GND +12 R103 8 1 TO SH 17 J12H CUE_1L TO SH10 J7A CH1_L CH1 LEVEL R556 9V R544 2 3.01K 9.09K GND J1D GND 7 J37G 4 FROM SH8 TONE 1L" J37A 1 C290 22/16 D13 LS4148 CH1 OL 20.0K CH1 ASSIGN GND FROM SH16 XFB 4 3 CH1 A/B SELECT +5 R494 200KB 2 GND R539 11.3K 3 1 Q8 2907A C349 D17 LS4148 P1 UP TO SH1 CH1 A/B J1C 3 B FROM SH1 2 CH1R J1B C30 R503 5.11K 6 47PF 6 5 R456 100K GND 5 R1B 20KB R504 5.11K 4 R455 100K 1 S7A 2 3 2P2T A A POST EQ B FROM SH16 XFA 1 3 S11A 2P3P 2 1 1.0 -12 R555 8 3.

01K R543 9.53K 2 MC33078 Z16A 3 1 P1 LEFT 100 mV/dB TO SH10 1 J8A Vc1 GND R499 S13B 2P2T 4 5 6 511 +5 D46 G S13A 2P2T 1 2 3 C150 4 -15 0.1 +15 P1 UP CH1 EFFECTS FROM SH8 TONE 1R" J37I 9 R104 22/16 6 5 4 20.0K GND GND J37J TONE 1R TO SH8 5 7 2 Q2 LM317L 3IO2 R422 2.00K GND +15 1 C155 ADJ 0.1 R412 243 R424 2.00K R425 C297 22/16 R421 2.00K GND -15 C156 ADJ 0.1 3 2 1 GND 2.00K R413 243 TO SH10,11 J8E CH1 EFF TO SH17 J12G CUE_1R TO SH11 J7B CH1_R +12 C153 0.

1 FROM SH1 CH2L J1E 5 C31 R505 5.11K R457 100K +12 C152 8 2 0.1 MC33078 Z15A 1 3 R458 100K GND -12 D11 LS4148 4 47PF GND C154 0.1 -12 2 J4B CH2 GAIN TRIM +/- 12 dB 2 R2A 20KB R506 5.11K 1 6 TO SH8 TONE 2L FROM SH8 TONE 2L" J4A +15 +15 R452 100K GND 7 S10A 2P2T C294 1 J4G 22/16 1 2 3 P1 UP I Q5 O LM337L 3 TO SH17 J12F CUE_2L TO SH10 J7C CH2_L R105 20.

OK GND 3 J1H 2 8 GND CH2 LEVEL CH2 ASSIGN CH2 OL D39 R +15 R260 10.0K R489 4.42K GND 6 R257 R258 10.0K 10.0K 8 3 J4H J4C D15 LS4148 3 GND R540 +12 R557 9V R546 3.

01K 9.09K 3 1 Q9 2907A C350 GND CH 2/4 CONTROL 104616-4.SCH CH2 A/B SELECT MIC TONE/ASSIGN 104616-5.SCH FROM SH16 9 XFB J12I 4 4 XFB R495 200KB 2 1 D18 LS4148 11.3K AUX/MASTER LEVEL CONTROL 104616-7.SCH R259 10.0K C32 R507 5.11K 6 R459 100K 5 R2B 20KB 4 R508 5.11K 6 5 R460 100K GND Z15B 7 MC33078 47PF D12 LS4148 10 GND 5 6 J4E J4F 1 A P1 UP 1 S8A 2 TO SH1 3 2P2T CH2 A/B J1G 7 B FROM SH1 CH2R J1F 6 +5 A 4 S8B 5 6 2P2T J4D 5 Z13B 7 TL072 -15 3 S12A 1.0 R545 EQ POST B FROM SH16 XFA J12J 10 XFA D16 LS4148 C295 J4J S14B 2P2T 2 2P3P -12 R558 3.

01K 6 9.53K 7 P1 LEFT R500 D47 G 511 S14A 1 2P2T 2 3 +5 4 5 6 5 GND Z16B 100 mV/dB TO SH10 2 J8B Vc2 MC33078 METER 104616-6.SCH TO SH8 TONE 2R FROM SH8 TONE 2R" J4I P1 UP CH2 EFFECTS 9 R106 22/16 S10B 2P2T C296 22/16 6 5 4 20.0K GND GND 6 5 4 TO SH10,11 J8F CH2 EFF TO SH17 J12E CUE_2R TO SH11 J7D CH2_R R420 2.00K GND ACTION: FRONT PCB CH1/2 CONTROL MP 44 DRAWN BY: CHECKED BY:

H:MP44\104616-3.SCH 3-Jan-2001 10802 47th Avenue West Mukilteo WA 98275-5098 SHEET: 3 of 18 104616 FROM SH1 CH3L J2A 1 C33 R511 5.11K +12 C158 22/16 2 8 3 2 2 0.1 MC33078 Z17A 1 3 R463 100K 47PF C301 R426 2.00K 1 2 3 4 2 CH3 GAIN TRIM +/- 12 dB R512 5.11K -12 D19 LS4148 R461 8 J6H J6C J6D 3 4 -15 5 J6E J6F 6 GND D20 LS4148 7 10 D22 LS4148 C299 100K GND C157 4 S15B 5 6 2P2T +15 R264 3 4 TL072 -15 R263 10.

OK 10.0K R490 4.42K GND Z19A 0.1 1 2 R261 R262 10.0K 10.

OK 8 D40 R +15 +15 R464 100K GND 4 R3A 20KB 1 TO SH9 J6B TONE 3L S17A 2P2T P1 UP GND 5 TO SH17 CUE_3L J12D TO SH10 J7E CH3_L R107 FROM SH9 TONE 3L" J6A 1 7 J6G C298 22/16 D21 LS4148 CH3 LEVEL 20.0K CH3 ASSIGN GND FROM SH16 XFB 4 3 GND R541 R496 200KB 2 11.3K +12 R559 9V R548 3.01K 9.09K 3 1 Q10 2907A C351 GND J2D 4 CH3 OL GND D27 LS4148 CH3 A/B SELECT A P1 UP 1 S15A 2 TO SH1 3 2P2T CH3 A/B J2C 3 B FROM SH1 CH3R J2B 2 C34 R513 5.

11K 6 47PF 6 5 R466 100K GND MC33078 Z17B 5 R3B 20KB R514 5.11K 4 R465 100K +5 A POST EQ B FROM SH16 XFA 1 3 S19A 2P3P 2 1 1.0 -12 8 R547 9.53K R560 2 3.01K MC33078 Z20A 3 1 P1 LEFT R509 D48 G S21A 1 2P2T 2 3 S21B 2P2T 100 mV/dB TO SH10 3 J8C Vc3 GND +5 4 5 6 511 C160 4 -15 0.1+15 P1 UP CH3 EFFECTS FROM SH9 9 TONE 3R" J6I R108 22/16 S17B 2P2T 6 5 4 C300 22/16 20.0K GND GND TO SH9 J6J TONE 3R 7 3 6 TO SH10,11 J8G CH3 EFF TO SH17 CUE_3R J12C TO SH11 J7F CH3_R R427 2.00K GND FROM SH1 CH4L J2E 5 C35 R515 5.11K +12 C159 8 3 2 R4A 20KB R516 5.11K -12 D23 LS4148 R468 100K GND 4 1 2 0.

1 MC33078 Z18A 1 3 R467 100K 47PF J2H GND 8 C305 22/16 2 R428 2.00K 2 TO SH9 TONE 4L J5B S18A 2P2T R462 100K GND +15 7 22/16 3 CH4 INPUT GAIN TRIM +/- 12 dB 1 2 3 +15 J5G P1 UP GND 7 TO SH17 J12B CUE_4L TO SH10 J7G CH4_L FROM SH9 TONE 4L"J5A 1 CH4 OL D4I R +15 R268 10.0K R491 4.42K GND 6 R265 R266 10.0K 10.0K 8 3 J5H J5C C302 R109 20.0K CH4 ASSIGN GND FROM SH16 D25 LS4148 XFB 4 4 CH4 LEVEL GND R542 R497 200KB 2 1 11.3K +12 R561 9V R550 2 3.01K 3 C352 9.09K Q11 2907A 1.

0 1 GND D28 LS4148 R549 CH4A/B SELECT A P1 UP 1 S16A 2 TO SH1 3 2P2T CH4 A/B J2G 7 B FROM SH1 CH4R J2F 6 R517 5.11K 6 5 R4B 20KB 4 R518 5.11K R469 100K 6 5 R470 100K GND Z18B 7 MC33078 +5 4 S16B 5 6 2P2T A J5D 5 Z19B 7 TL072 R267 10.0K C36 47PF GND D24 LS4148 10 D26 LS4148 C303 S22B 2P2T -15 -15 5 6 J5E J5F 3 S20A EQ XFA POST B FROM SH16 1 2P3P 2 -12 R562 3.01K 6 9.

53K 7 P1 LEFT R510 4 5 6 511 D49 G S22A 2P2T 1 2 3 +5 5 GND Z20B 100 mV/dB TO SH10 4 J8D Vc4 MC33078 TO SH9 J5J TONE 4R FROM SH9 9 TONE 4R" J5I P1 UP CH4 EFFECTS R110 22/16 S18B 2P2T C304 22/16 6 5 4 20.0K GND GND 8 1 8 TO SH10,11 J8H CH4 EFF TO SH17 J12A CUE_4R TO SH11 J7H CH4_R R429 2.00K GND ACTION: FRONT PCB CH3/4 CONTROL MP 44 DRAWN BY: CHECKED BY: H:MP44\104616-4.SCH

3-Jan-2001 10802 47th Avenue West Mukilteo WA 98275-5098 SHEET: 4 of 18 104616 D29 R471 100K GND C164 R269 R270 10.0K 10. OK S23B 2P2T S23A 1 2 3 4 5 6 +15 R272 3 4 TL072 -15 R271 10.0K D30 LS4148 R111 20.0K C11 150PF +15 C162 8 2 0.



[You're reading an excerpt. Click here to read official RANE MP 44 user guide](http://yourpdfguides.com/dref/3395479)

<http://yourpdfguides.com/dref/3395479>

I 1 Z21A C357 3 0.047 TL072 GND R567 3 1 R568 -15 R7B 3.01K R7A 20KB 3.01K C111 6 20KB 4 2 4 0.01 J3H -15 8 5 C311 22/16 2 R121 20.0K GND J3B 20.0K R112 10.

OK R492 4.42K GND 2 0.1 1 Z23A 8 D42 R LS4148 +15 MIC1 OL ENGAGE -12 OFF R5B 6 20KB 4 D82 LS4148 2P2T R117 3.01K D84 BLUE GND HIGH FROM SH2 MIC1 TONE IN J3A 1 22/16 2 3.01K 3.01K C9 C353 0.0047 6 150PF 7 Z21B R573 5 6.81K TL072 GND R574 3 1 R575 R6B 6.81K R6A 20KB 6.81K 6 20KB 4 C355 2 5 0.

047 GND C307 R563 R564 GND R5A 3 20KB 1 5 FROM SH2 MIC1_EFF_RTN J3C 3 R115 20.0K GND 3 2 1 12 R119 20.0K S24A 2P2T GND 4 TO SH14 J12L DUCKER 6 R11B 5 6 R12B 5 EFFECTS ENGAGE TO SH2 MIC1_EFF_SND 6 5 4 S24B 2P2T 20KB D83 LS4148 3 R11A 2 20KB 1 20KB MAIN MIC LEVEL R519 C309 22/16 5.11K C359 0.0022 R520 5.

11K LOW +15 J3G 7B GND 4 5 6 2P2T TL072 4 GND L/R PAN 2P2T 5 6 R17B 20KB 1 MONO D97 GRN S31A 1 2 3 2 R17A 20KB -15 0.1 +15 14 C40 R605 J12N J10B 2 TO SH13 J10D S32B 2P2T PRE_EFF_R R203 10.0K GND GND -15 +15 R200 1.00K R551 9.09K 4 FROM SH11 RIGHT MIX GND 30.1K R284 10.0K 47PF 6 8 R606 30.1K Z29B 7 RIGHT 3 AUX 2 LEVEL FROM SH12 AUX_2L J9C 3 3 R14A 2 20KB TO SH17 J13K TO SH13 11 J10H 5 TO SH14 LMT_INR MC33078 J13C TO SH6 MONO_MST J10G 7 GND S30A POST PRE MIC 4 2P3P 1 3 2 3 GND GND 1 6 FROM SH12 AUX_2R J9D 4 R14B 5 20KB P1 RIGHT C376 220PF R38A 20KB 1 GND 2 C315 R528 22/16 5.11K MC33078 +15 S30B POST MIC 2 3 8 R529 5.11K Z28A 4 1 C170 0.1 GND -15 C374 +15 7 J9G 3 HOUSE LEVEL TO SH12 AUX_OUT_2L GND R498 200KB 1 2 13 J12M TO SH14 MST_LEVEL GND POWER D86 R768 GND YEL 2.49K +15 1 2 3 4 8 GND J11A J11B J11C J11D J11H 4 -12 5 6 -15 +5 7 J11G J11E J11F PRE BOOTH LEVEL 8 2P3P 3 5 7 6 220PF 6 R38B 20KB 4 GND GND ACTION: 11 R530 5 C313 R531 22/16 5.11K 5.11K 6 5 Z28B 7 MC33078 8 J9H R18A 20KB 1 2 R430GND 2.00K 9 J12K TO SH14 BTH_LEVEL J13I GND TO SH12 AUX_OUT_2R -12 R18B 20KB 4 6 5 FRONT PCB AUX LEVEL CONTROL MP 44 DRAWN BY: CHECKED BY: H:\MP44\104616-7.

SCH 3-Jan-2001 10802 47th Avenue West Mukilteo WA 98275-5098 SHEET: 7 of 18 104616 R628 4.02K +15 C172 C113 C114 3 0.1 3 Z30A MC33078 1 10.0K 3 J24C J24D R691 -15 5 6 GND R692 7 MC33078 GND 1 R706 6 J24E J24F 0.001 C384 0.001 R661 5.36K +15 -15 C174 1.91K C383 4 8 2 0.1 MC33078 Z34A 1 3 4 GND C13 +15 C173 7 0.1 3 Z31A R20A MC33078 20KB 1 10.

OK GND 2 R287 10.0K R288 5 4 1 C398 C397 8 3 20.0K 150PF R126 20.0K -15 R127 20.0K +15 C178 GND C381 0.

001 C382 R657 5.36K 0.001 R690 6 5 MC33078 GND C400 GND 0.1 -15 0.1 2 0.

I R658 5.36K Z30B 1.91K 19.1K C429 0.022 R705 R19A 20KB 2 R285 10.0K R286 R122 J24H 8 J24G 4 1 7 R630 CH 1-LEFT HIGH 0.01 +15 C115 C116 0.01 R631 4.02K GND 4.02K +15 C183 3 2 8 0.

I 1 Z36A 4 CH 1-RIGHT 8 0.01 2 -15 R689 1.91K 0.01 R629 4.02K GND HIGH 6 4 -15 MC33078 R19B R297 10.0K R298 5 10.0K 20KB GND R124 20.0K +15 C180 2 0.1 MC33078 Z40A 1 3 GND 4 7 C402 C401 3 8 0.1 8 -15 R131 C15 20.

OK 150PF R130 MID 6 Z34B TO SH3 TONE 1L" J24A 20.0K 1.91K 19.1K C430 0.022 GND GND C404 0.

1 5 Z36B 0.1 MC33078 0.1 R662 5.36K GND Z37A 2 4 1 MID 6 6 GND MC33078 4 R20B R299 10.0K R300 5 10.

OK 20KB GND 5 Z40B 7 9 TO SH3 J24I TONE 1R" MC33078 GND FROM SH3 2 TONE 1L J24B R659 5 6 3 22/16 MC33078 1 R21A 20KB 2 GND Z31B 7 C316 R660 LOW R289 10.0K R290 10.0K 5.36K 5.36K C399 0.1 GND R632 4.02K +15C175 FROM SH3 TONE 1R J24J 10 R663 5.36K R664 5.36K C403 0.1 GND 5 6 Z37B 7 MC33078 C317 22/16 LOW 6 R634 4.

OK +15 +15 C182 R21B R301 10.0K R302 5 10.0K 20KB GND 4 CH 2-LEFT HIGH 3 R22A 20KB 1 GND 2 R291 10.0K R292 10.0K R123 20.0K +15 C179 8 2 0.1 MC33078 Z35A 1 3 4 GND R665 5.36K +15 C176 C406 C405 C14 -15 R129 20.0K GND 150PF R128 8 20.0K 3 4 -15 5 6 J26E J26F C119 C120 7 8 J26G J26H J26C J26D 0.

01 0.01 R635 4.02K GND CH 2-RIGHT 3 2 8 0.1 1 Z38A 4 C117 C118 3 0.1 1 2 4 -15 R693 1.

91K C385 0.001 C386 0.001 R694 6 5 GND C408 0.1 Z32B 7 MC33078 1.91K 19.

1K C431 0.022 R707 MC33078 Z32A 8 0.01 0.01 R633 4.02K GND HIGH 6 R22B 20KB 4 -15 R695 1.91K C387 0.001 C388 0.001 R669 5.36K +15 MC33078 GND 5 R303 10.0K R304 R125 10.

OK 20.0K +15 C181 2 0.1 MC33078 Z41A 1 3 GND 4 7 3 0.1 0.1 R666 5.36K GND 2 Z33A 4 R23A MC33078 20KB 1 -15 GND 2 R293 10.0K R294 10.0K 5 GND Z35B MC33078 1 7 J26ATONE 2L" 1.91K 19.1K C432 0.

022 GND GND C412 0.1 5 Z38B MC33078 3 0.1 0.1 R670 5.36K GND 2 8 3 0.

1 1 8 -15 R133 C16 C177 20.0K 150PF R132 MID 6 TO SH3 R696 R708 6 C410 C409 20.0K Z39A 4 0.1 1 MID 6 R23B MC33078 20KB GND 4 -15 5 6 GND R305 10.0K R306 5 Z41B 7 9 TO SH3 TONE 2R" J26I MC33078 10.

OK GND FROM SH3 TONE 2L J26B 2 R667 5.36K R668 5.36K C407 0.1 GND 5 6 Z33B 7 MC33078 C318 22/16 LOW 3 R24A 20KB 1 GND 2 R295 10.0K R296 10.0K FROM SH3 TONE 2R J26J 10 R671 5.36K R672 5.36K C411 0.1 GND 5 6 Z39B 7 MC33078 C319 22/16 LOW 6 R24B 20KB 4 5 R307 10.0K R308 10.

OK CH 2/4 TONE 104616-9.SCH ACTION: GND TONE PCB CH1/2 TONE LEFT/RIGHT MP 44 DRAWN BY: CHECKED BY: H:\MP44\104616-8.SCH 3-Jan-2001 10802 47th Avenue West Mukilteo WA 98275-5098 SHEET: 8 of 18 104616 R636 4.02K +15C184 C121 C122 3 0.1 3 Z42A MC33078 1 10.0K 8 3 J27C J27D 4 -15 5 6 GND J27E J27F 2 0.1 MC33078 Z46A 1 3 4 GND R673 C17 +15 R698 8 6 5 MC33078 3 GND C416 1 0.1 GND GND -15 10.0K R26A MC33078 20KB 2 R311 10.0KR312 GND 4 0.

1 2 5 0.1 R674 5.36K Z43A Z42B 7 0.1 1 C414 3 C413 1.91K 19.

1K C433 0.022 R709 C185 20.0K 150PF R138 20.0K 5.36K -15 R139 20.

OK +15 C190 GND R25A 20KB J27H 2 R309 10.0K R310 R134 8 J27G 7 4 1 8 R638 CH 3-LEFT HIGH 0.01 +15 C123 C124 0.01 R639 4.02K GND 4.02K +15 3 2 8 C195 0.1 1 Z48A 4 CH 3-RIGHT HIGH 6 R25B 20KB 4 -15 R699 1.91K C391 0.001 C392 0.001 +15 R677 5.

36K MC33078 GND 5 0.01 2 -15 R697 1.91K C389 0.001 C390 0.001 0.01 R637 4.02K GND R321 10.0K R322 R136 10.0K 20.0K +15 C192 2 0.

I MC33078 Z52A 1 3 GND 4 R700 R710 C186 7 3 8 6 C418 C417 0.1 1 8 -15 R143 C19 20.0K 150PF R142 7 1 MID 6 Z46B J27A MC33078 TO SH4 TONE 3L" 20.0K 1.91K 19.

1K C434 0.022 GND GND C420 0.1 5 Z48B MID 6 0.1 MC33078 0.1 R678 5.

36K GND 2 Z49A 4 R26B MC33078 20KB GND 4 -15 5 6 GND R323 10.0K R324 5 Z52B 7 9 TO SH4 TONE 3R" J27I MC33078 10.0K GND FROM SH4

TONE 3L J27B 2 R675 5 6 3 22/16 MC33078 1 R27A 20KB GND 2 Z43B 7 C320 R676 LOW R313 10.0KR314 10.0K 5.36K 5.36K C415 0.1 GND R640
4.02K +15C187 FROM SH4 TONE 3R J27J 10 R679 5.36K R680 5.

36K C419 0.1 GND 5 6 Z49B 7 C321 22/16 MC33078 R642 LOW 6 R27B 20KB GND 4.02K +15 C194 4 5 R325 10.0K R326 10.0K CH 4-LEFT HIGH 3
R28A 20KB 1 GND 2 R315 10.0K R316 10.0K R135 20.0K +15 C191 8 2 0.1 MC33078 Z47A 1 3 4 -15 GND R681 5.36K +15 C188 -15 R141 C18 20.
0K 150PFR140 GND 5 6 J28E J28F +15 7 8 3 4 J28G J28H J28C J28D C127 C128 0.



[You're reading an excerpt. Click here to read official RANE MP 44
user guide](#)

<http://yourpdfguides.com/dref/3395479>

01 0.01 R643 4.02K GND CH 4-RIGHT 3 2 8 0.1 I Z50A 4 C125 C126 3 0.
1 1 2 4 -15 R701 1.91K C393 0.001 C394 0.001 R702 6 5 GND C424 0.1 Z44B 7 MC33078 1.
91K 19.1K C435 0.022 R711 C422 C421 0.1 0.1 R682 5.36K GND MC33078 Z44A 8 0.01 0.01 R641 4.02K GND HIGH 6 R28B 20KB 4 -15 R703 1.91K
C395 0.

001 C396 0.001 8 20.0K R685 5.36K +15 C189 MC33078 GND 5 R327 10.0K R328 R137 10.0K 20.0K +15 C193 2 0.1 MC33078 Z53A 1 3 GND 4 7 2 3
Z45A 4 R29A MC33078 20KB 1 -15 GND 2 R317 10.0K R318 10.0K 5 GND Z47B MC33078 1 7 J28ATONE 4L" 1.
91K 19.1K C436 0.022 GND GND C428 0.1 5 Z50B MC33078 3 0.1 0.
1 R686 5.36K GND 2 8 3 0.1 1 8 -15 R145 C20 20.0K 150PF R144 MID 6 TO SH4 R704 R712 6 C426 C425 20.0K Z51A 4 0.
1 1 MID 6 R29B MC33078 20KB GND 4 -15 5 6 GND R329 10.0K R330 5 Z53B 7 9 TO SH4 J28I TONE 4R" MC33078 10.0K GND FROM SH4 TONE 4L
J28B 2 R683 5.36K R684 5.36K C423 0.1 GND 5 6 Z45B 7 C322 22/16 MC33078 LOW 3 R30A 20KB 1 GND 2 R319 10.0K R320 10.0K FROM SH4 TONE
4R J28J 10 R687 5.36K R688 5.36K C427 0.

1 GND 5 6 Z51B 7 MC33078 C323 22/16 LOW 6 R30B 20KB 4 GND ACTION: 5 R331 10.0K R332 10.0K TONE PCB CH3/4 TONE LEFT/RIGHT MP 44
DRAWN BY: CHECKED BY: H:\MP44\104616-9.SCH 3-Jan-2001 10802 47th Avenue West Mukilteo WA 98275-5098 SHEET: 9 of 18 104616 +12 C202
C449 22PF R152 20.0K Z63B MC33078 J30E R147 20.0K +15 -15 +5 5 22PF GND 3 0.1 20.0K 2180C 8 2 Z97 1 MC33078 Z56A 3 R645 C217 C205 4.02K
GND 3 J30F 6 R148 20.0K GND C451 22PF R156 20.
0K Z64B MC33078 7 6 Z67D ADG212 7 R335 10.0K 8 J30G 5 R149 20.0K Z62C 6 74HCU04 GND 2180C 8 6 11 1 Z61A ADG212 2 R334 10.0K 3 Z62B 4
74HCU04 8 4 4 7 R154 GND GND GND 12 VL 4 VZ60E ADG212 13 V+ GND C450 C204 5 8 7 6 10.0K 13 +15 -15 +5 4 12 5 Z60D ADG212 7 R333 Z62A
1 V+ VVL GND 14 Z61B ADG212 15 16 Z61E ADG212 +5 14 C198 0.
1 2 GND 74HCU04 GND CH1 EFF 7 2180C 8 6 11 GND 3 7 C441 R151 FROM SH3 1 CH1_L J29A 1 Z96 5 R644 C203 4.02K GND 5 4 2 6 R720 C365
6.04K 1.0/50V 20.0K 0.
1 Z60C ADG212 10 9 R340 10.0K 11 10 13 12 GND Z62E GND Z62F 74HCU04 74HCU04 FROM SH3 CH1 EFF TO SH11 CH1 EFF" FROM SH3 VC1
J30A 1 8 R473 2 3 C201 4 Z54A 1 Vc1" 0.01MC33078 TO SH11 -12 +12 GND 0.1 100K 6.1mV/dB GND -15 0.1 +15 R339 10.0K FROM SH3 C442 R153 1
CH2_L J29C 3 2 6 5 R721 C366 6.04K -15 -12 +12 C206 GND 3 7 0.1 0.1 +15 1.

0/50V20.0K FROM SH3 CH2 EFF TO SH11 CH2 EFF" CH2 EFF FROM SH3 VC2 J30B 2 R474 6 5 MC33078 GND Z54B 7 Vc2" 0.01 R342 TO SH11
6.1mV/dB GND 0.1 C42 10.0K 100K 47PF Z67C ADG212 10 9 FROM SH4 C443 R155 1 CH3_L J29E 5 Z98 5 R646 C207 4.02K GND 5 4 2 6 R722 C367
6.04K 1.0/50V 20.0K 10.
0K GND FROM SH4 7 CH3 EFF TO SH11 CH3 EFF" CH3 EFF 4 R338 2 MC33078 Z59A 3 8 1 R431 C197 2.00K GND -15 0.1 +15 FROM SH4 3 VC3 8
J30C 4 0.01 MC33078 R475 2 GND 0.1 TO SH11 1 -12 100K Z55A Vc3" 3 +12 C210 6.
1mV/dB C452 C208 GND -15 0.1 +15 22PF R158 0.1 GND 20.0K 2180C FROM SH4 C444 R157 1 8 2 CH4_L J29G 7 Z99 1 MC33078 Z57A 1.0/50V20.
0K R723 3 R647 C200 C209 4.02K GND 3 7 8 4 5 2 6 C368 6.04K 4 0.01 R476 6 5 MC33078 GND Q3 LM317L 3I02 +15 C213 ADJ 0.1 1 R414 243 R432
2.00K 1 GND 3 -15 R433 C214 ADJ 0.1 2 Q6 O I LM337L 2.00K R415 243 GND C212 0.1 -12 Z55B 7 Vc4" R718 22.1K C437 C438 R50 Z68B ADG212 15
14 Z68A ADG212 2 R336 10.

0K 3 16 0.33 R337 10.0K 3 8 +15 MC33078 0.33 22.1K 2 Z66A 1 1 TO SH7 J32A R800 22.1K 4 C216 LEFT MIX -15 GND 8 -15 0.1 +15 1 0.1 R796 FROM
SH4 CH4 EFF 0.1 -12 J30H 9 R150 20.0K C41 Z62D 8 74HCU04 TO SH11 CH4 EFF" R797 10.
0K 10.0K FROM SH4 VC4 J30D 4 TO SH11 6.1mV/dB 100K GND FlexFX GND 47PF 8 2 MC33078 Z65A 3 4 +12 C211 0.1 GND R532 5.11K 1 C215 -15
0.
1 +15 C324 22/16 R439 301 STACK R146 20.0K GND SEND GND STACK J9A CH4 EFF C43 GND LOOP 47PF J10A C325 R713 6 22/16 15.0K 5 R609
30.1K Z58B R610 30.1K 7 R341 10.

0K RETURN GND MC33078 GND GND MAST MIX RIGHT 10461611.SCH AUX IN/OUT 10461612.SCH MASTER EFFECTS 10461613.SCH EFFECTS
PCB ACTION: MIX LEFT MP 44 DRAWN BY: CHECKED BY: H:\MP44\10461610.SCH 3-Jan-2001 10802 47th Avenue West Mukilteo WA 98275-5098
SHEET: 10 of 18 104616 +12 C227 GND 3 7 22PF R161 0.1 20.0K 2180C 8 2 Z100 MC33078 Z63A 1 3 R651 C199 C228 4.02K GND 3 +15 -15 +5 5 -12
+12 C221 GND R163 20.0K Z56B MC33078 CH2 EFF C46 -12 +12 C223 GND 3 0.1 20.

0K 2180C 8 2 Z102 MC33078 Z64A 1 3 R649 C219 C224 4.02K GND 0.1 -15 +15 0.1 7 3 CH3 EFF 1 Z67A ADG212 2 8 4 5 4 22PF R165 C455 14 Z67B
ADG212 15 CH3 EFF" R345 10.0K 16 R348 47PF 6 MC33078 Z59B 5 8 7 6 R344 10.0K Z61D ADG212 7 3 7 0.1 2180C 8 6 22PF C454 11 GND GND
GND Z61C ADG212 10 CH2 EFF" 9 12 VL 4 V1 Z60A ADG212 2 R343 13 V+ Z67E ADG212 10.0K 8 5 4 4 C453 14 Z60B ADG212 15 CH1 EFF" V+ Z68E
V- ADG212 +15 -15 +5 13 4 12 5 VL GND 16 R350 FROM SH3 C445 R160 2 1 CH1_R J29B Vc1" CH1 EFF -15 0.1 +15 2 6 FROM SH10 10.0K FROM
SH10 FROM SH10 1.
0/50V 20.0K GND 0.1 R349 FROM SH3 C446 R162 1 CH2_R J29D 4 Z101 5 R648 C222 4.02K GND 5 4 2 6 FROM SH10 10.0K FROM SH10 Vc2" 0.
1 1.0/50V 20.0K FROM SH10 R352 GND 10.0K 7 R434 2.00K GND FROM SH4 C447 R164 1 CH3_R J29F 6 Vc3" 2 6 FROM SH10 10.
0K GND FROM SH10 FROM SH10 1.0/50V20.0K GND -12 +12 C225 GND R167 20.0K Z57B 7 MC33078 CH4 EFF 3 7 0.1 2180C 8 6 22PF C456 R719
22.1K C439 C440 R51 Z68C ADG212 10 11 Z68D ADG212 7 6 8 9 0.33 R347 0.33 5 22.1K 6 Z66B 7 2 TO SH7 RIGHT MIX J32B R801 22.1K MC33078
R799 FROM SH4 CH4_R J29H 5 R650 C226 4.

02K GND 4 5 2 6 FROM SH10 Vc4" C448 R166 8 1 1.0/50V20.0K Z103 FROM SH10 R346 CH4 EFF" 10.0K GND R798 10.0K 10.0K 10.0K FROM SH10
GND C44 GND -12 0.1 FlexFX 47PF 6 5 GND Z65B 7 MC33078 R353 5.11K C326 22/16 R440 301 STACK R159 20.0K GND SEND GND STACK J9B
LOOP J10B C327 R714 C45 47PF 2 22/16 15.

0K 3 R611 MC33078 30.1K 8 R715 30.1K Z58A 1 R351 10.0K RETURN GND 4 GND GND C196 -15 0.1 +15 EFFECTS PCB ACTION: MIX RIGHT MP 44
DRAWN BY: CHECKED BY: H:\MP44\10461611.
SCH 3-Jan-2001 10802 47th Avenue West Mukilteo WA 98275-5098 SHEET: 11 of 18 104616 AUX A LEFT INPUT J46A RCA 2-S 3 R362 10.0K GND 5
TL072 6 R364 R363 10.0K R369 R366 10.0K GND TL072 2 22/16 4 R367 10.0K R368 GND C278 220PF .
@@@@@@@@@.



[You're reading an excerpt. Click here to read official RANE MP 44 user guide](http://yourpdfguides.com/dref/3395479)
<http://yourpdfguides.com/dref/3395479>