



Your PDF Guides

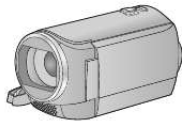
You can read the recommendations in the user guide, the technical guide or the installation guide for PANASONIC HC-V110. You'll find the answers to all your questions on the PANASONIC HC-V110 in the user manual (information, specifications, safety advice, size, accessories, etc.). Detailed instructions for use are in the User's Guide.

User manual PANASONIC HC-V110
User guide PANASONIC HC-V110
Operating instructions PANASONIC HC-V110
Instructions for use PANASONIC HC-V110
Instruction manual PANASONIC HC-V110

Panasonic

Basic Operating Instructions
High Definition Video Camera

Model No. **HC-V210**
HC-V210M
HC-V110



Please read these instructions carefully before using this product, and save this manual for future use.

This document explains basic operations of the unit. For more detailed explanation, please refer to "Operating Instructions (PDF format)" which is recorded in the enclosed CD-ROM.



AVCHD™
Progressive

AVCHD™

HDMI



DOLBY
DIGITAL

Web Site: <http://www.panasonic-europe.com>

EB|EP

VQT4T56



[You're reading an excerpt. Click here to read official PANASONIC HC-V110 user guide](http://yourpdfguides.com/dref/4729723)
<http://yourpdfguides.com/dref/4729723>

35 mm to 89.3 mm Macro (Full range AF) 35 mm equivalent; / Motion picture/Still picture; 32.

3 mm to 1365 mm (16:9) Motion picture/Still picture; 34.4 mm to 1646 mm (16:9) Minimum focus distance; Normal; Approx. 3 cm (Wide)/Approx. 1.6 m (Tele) / Tele macro; Approx.

70 cm (Tele) Charging; / Power consumption: 24 VQT4T56 HC-V210&V210M&V110_EP_VQT4T56_mst.book 25 □□□

□□□□□□□□□□□□□□□□□□□□□□□□ Zoom: / i.Zoom OFF 42k i.Zoom OFF 48k 72k i.Zoom, 100k/2500k Digital Zoom Image stabilizer function: / Optical (Active mode) Electronic Monitor: 6.7 cm (2.7z) wide LCD monitor (Approx. 230 K dots) Microphone: Stereo Minimum required illumination: Approx. 4 lx (1/25 with Low Light mode in the Scene Mode) Approx. 1 lx with the Colour Night View function AV connector video output level: 1.

0 Vp-p, 75 h, PAL system HDMI mini connector video output level: HDMI™ 1080p*/1080i/576p */ only AV connector audio output level (Line): 251 mV, 600 h, 2 ch HDMI mini connector audio output level: [AVCHD]; Dolby Digital/Linear PCM [iFrame], [MP4]; Linear PCM USB: Reader function SD card; Read only (No copyright protection support) Built-in memory; Read only / Hi-Speed USB (USB 2.0), USB terminal Type Mini AB USB host function (for USB HDD) Hi-Speed USB (USB 2.0), USB terminal Type Mini B Dimensions: 53 mm (W)k60 mm (H)k114 mm (D) (including projecting parts) Mass: Approx. 184 g [without battery (supplied) and an SD card (optional)] Approx. 185 g [without battery (supplied)] Approx. @229 g [with battery (supplied) and an SD card (optional)] Approx. 228 g [with battery (supplied)] Approx. @@@@58 g 26 VQT4T56 HC-V210&V210M&V110_EP_VQT4T56_mst.book 27 □□□ □□□□□□□□□□□□□□□□□□□□□□□□ Others About copyright ∫ Carefully observe copyright laws Recording of pre-recorded tapes or discs or other published or broadcast material for purposes other than your own private use may infringe copyright laws. Even for the purpose of private use, recording of certain material may be restricted.

This product is licensed under the AVC patent portfolio license for the personal and non-commercial use of a consumer to (i) encode video in compliance with the AVC Standard ("AVC Video") and/or (ii) decode AVC Video that was encoded by a consumer engaged in a personal and non-commercial activity and/or was obtained from a video provider licensed to provide AVC Video. No license is granted or shall be implied for any other use. Additional information may be obtained from MPEG LA, LLC. See <http://www.mpegla.com>.

/ This product incorporates the following software: (1)the software developed independently by or for Panasonic Corporation, (2)the software owned by third party and licensed to Panasonic Corporation, (3)the open source software. For the software categorized as (3), please refer to the detailed terms and conditions thereof shown in the attached software CDROM. ∫ Licenses ≥ SDXC Logo is a trademark of SD-3C, LLC. ≥ "AVCHD", "AVCHD Progressive", the "AVCHD" logo and the "AVCHD Progressive" logo are trademarks of Panasonic Corporation and Sony Corporation.

≥ Manufactured under license from Dolby Laboratories. Dolby and the double-D symbol are trademarks of Dolby Laboratories. ≥ HDMI, the HDMI Logo, and High-Definition Multimedia Interface are trademarks or registered trademarks of HDMI Licensing LLC in the United States and other countries. ≥ Microsoft®, Windows® and Windows Vista® are either registered trademarks or trademarks of Microsoft Corporation in the United States and/or other countries. ≥ iMovie, Mac and Mac OS are trademarks of Apple Inc. registered in the U.S. and other countries. ≥ Other names of systems and products mentioned in these instructions are usually the registered trademarks or trademarks of the manufacturers who developed the system or product concerned. VQT4T56 27 HC-V210&V210M&V110_EP_VQT4T56_mst.

book 28 □□□ □□□□□□□□□□□□□□□□□□□□□□□□ Pursuant to at the directive 2004/108/EC, article 9(2) Panasonic Testing Centre Panasonic Marketing Europe GmbH Winsberggring 15, 22525 Hamburg, Germany Pursuant to the applicable EU legislation Panasonic Marketing Europe GmbH Panasonic Testing Centre Winsberggring 15, 22525 Hamburg, Germany EU Panasonic Corporation Web site: <http://panasonic.net> VQT4T56 F0113YK0 © Panasonic Corporation 2012 .



[You're reading an excerpt. Click here to read official PANASONIC HC-V110 user guide](http://yourpdfguides.com/dref/4729723)
<http://yourpdfguides.com/dref/4729723>