

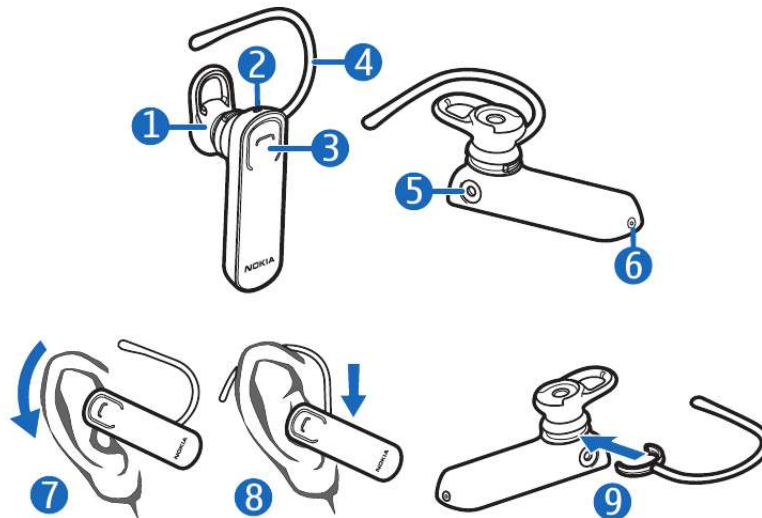


Your PDF Guides

You can read the recommendations in the user guide, the technical guide or the installation guide for NOKIA BLUETOOTH STEREO HEADSET BH-108. You'll find the answers to all your questions on the NOKIA BLUETOOTH STEREO HEADSET BH-108 in the user manual (information, specifications, safety advice, size, accessories, etc.). Detailed instructions for use are in the User's Guide.

User manual NOKIA BLUETOOTH STEREO HEADSET BH-108
User guide NOKIA BLUETOOTH STEREO HEADSET BH-108
Operating instructions NOKIA BLUETOOTH STEREO HEADSET BH-108
Instructions for use NOKIA BLUETOOTH STEREO HEADSET BH-108
Instruction manual NOKIA BLUETOOTH STEREO HEADSET BH-108

Nokia Bluetooth Headset BH-108



9220721/1



[You're reading an excerpt. Click here to read official NOKIA BLUETOOTH STEREO HEADSET BH-108 user guide](http://yourpdfguides.com/dref/2737769)
<http://yourpdfguides.com/dref/2737769>

Manual abstract:

A copy of the Declaration of Conformity can be found at http://www.nokia.com/phones/declaration_of_conformity/. The products described in this document without prior notice. Bluetooth is a registered trademark of Bluetooth SIG, Inc. To the maximum extent permitted by applicable law, under no circumstances shall Nokia or any of its licensors be responsible for any loss of data or income or any special, incidental, consequential or indirect damages howsoever caused. The contents of this document are provided "as is". Except as required by applicable law, no warranties of any kind, either express or implied, including, but not limited to, the implied warranties of merchantability and fitness for a particular purpose, are made in relation to the accuracy, reliability or contents of this document. Nokia reserves the right to revise this document or withdraw it at any time without prior notice. The availability of particular products may vary by region.

Please check with your Nokia dealer for details. This device may contain commodities, technology or software subject to export laws and regulations from the US and other countries. Diversion contrary to law is prohibited. © 2010 Nokia. All rights reserved.

Nokia, Nokia Connecting People and the Nokia Original Accessories logo are trademarks or registered trademarks of Nokia Corporation. Nokia tune is a sound mark of Nokia Corporation. Other product and company names mentioned herein may be trademarks or tradenames of their respective owners. Reproduction, transfer, distribution, or storage of part or all of the contents in this document in any form without the prior written permission of Nokia is prohibited. Nokia operates a policy of continuous development.

Nokia reserves the right to make changes and improvements to any of ENGLISH Introduction With the Nokia Bluetooth Headset BH-108, you can make and answer calls hands-free with your compatible mobile device. Read this user guide carefully before using the headset. @@This product may contain small parts. Keep them out of the reach of small children. The surface of this device is nickel-free. @@@@The headset and the other device do not need to be in line of sight, but they should be within 10 metres (33 feet) of each other. ENGLISH Get started The headset contains the following parts shown on the title page: earpiece (1), indicator light (2), multifunction key (3), earloop (4), charger connector (5), and microphone (6). Before using the headset, you must charge the battery and pair the headset with a compatible device. Parts of the device are magnetic. Metallic materials may be attracted to the device.

Do not place credit cards or other magnetic storage media near the device, because information stored on them may be erased. with this particular model. The use of any other types may invalidate any approval or warranty, and may be dangerous. Use of unapproved chargers may present a risk of fire, explosion, or other hazard. When you disconnect the power cord of any accessory, grasp and pull the plug, not the cord. Charge the battery Before charging the battery, carefully read "Battery and charger information". Warning: Use only chargers approved by Nokia for use 1. Connect the charger to a wall outlet. 2. Connect the charger cable to the charger connector.

The red indicator light is displayed during charging. Charging the battery fully may take up to 2 hours. 3. When the battery is fully charged, the green indicator light is displayed. Disconnect the charger from the headset, then from the wall outlet.

ENGLISH The fully charged battery has power for up to 5 hours of talk time or up to 120 hours of standby time. To check the battery charge when the headset is not connected to a charger, press the multifunction key when the headset is connected to a mobile device. If the indicator light is green, the charge level is sufficient. If the light is yellow, you may need to recharge the battery soon. If the light is red, recharge the battery.

When the battery charge is low, the headset beeps every 5 minutes and the red indicator light flashes. use, the green indicator light flashes slowly. If the headset has not been paired with a device, it automatically enters pairing mode. To switch off, press and hold the multifunction key for about 5 seconds. The headset beeps, and the red indicator light is briefly displayed. If the headset is not connected to a device within about 30 minutes, it switches off automatically. Pair and connect the headset Before using the headset, you must pair and connect it to a compatible device. Switch on or off You can pair the headset with up to eight devices, but you can connect it To switch on, press and hold the multifunction key for about 2 seconds. to only one device at a time. The headset beeps, and the green 1.

Make sure your mobile device is indicator light is displayed. The switched on and the headset is off. headset tries to connect to the last 2. If the headset has not been used device. @@@@3. @@For details, see the user guide of your mobile device. 4. Select the headset from the list of found devices. 5.

@@@@@Proceed as described in the user guide of the mobile device.

To answer or end a call, press the multifunction key. To reject a call, press this key twice. @@@@2 seconds, or switch off the headset. @@multifunction key twice. The headset is ready to be used on the right ear.

@@@Push or pull the earloop to set its length. @@@@After the settings are cleared, the headset enters pairing mode. @@@@The exact charger model number may vary depending on the type of plug. The plug variant is identified by one of the following: E, EB, X, AR, U, A, C, K, B, or UB. The battery can be charged and discharged hundreds of times, but it will eventually wear out.

Recharge your battery only with Nokia approved chargers designated for this device. If a battery is being used for the first time or if the battery has not been used for a prolonged period, it may be necessary to connect the charger, then disconnect and reconnect it to begin charging the ENGLISH battery. If the battery is completely discharged, it may take several minutes before the charging indicator light is displayed. Unplug the charger from the electrical plug and the device when not in use. Do not leave a fully charged battery connected to a charger, since overcharging may shorten its lifetime. If left unused, a fully charged battery will lose its charge over time. Always try to keep the battery between 15°C and 25°C (59°F and 77°F). Extreme temperatures reduce the capacity and lifetime of the battery. A device with a hot or cold battery may not work temporarily. Battery performance is particularly limited in temperatures well below freezing.

Do not dispose of batteries in a fire as they may explode. Dispose of batteries according to local regulations. Please recycle when possible. Do not dispose as household waste. Never use any charger that is damaged. Operating times are estimates only. Actual performance depends on many factors such as device settings selected, device features being used (or running in the background), battery condition and ambient temperature.



[You're reading an excerpt. Click here to read official NOKIA
BLUETOOTH STEREO HEADSET BH-108 user guide
http://yourpdfguides.com/dref/2737769](http://yourpdfguides.com/dref/2737769)

Taking care of your device Your device is a product of superior design and craftsmanship and should be treated with care. The following suggestions will help you protect your warranty coverage. · Keep the device dry.

· · · · Its moving parts and electronic components can be damaged. · Do not store the device in high or cold temperature. · · · · Do not attempt to open the device. · Do not drop, knock, or shake the device. Rough handling can break internal circuit boards and fine mechanics. · Do not use harsh chemicals, cleaning solvents, or strong detergents to clean the device. Only use a soft, clean, dry cloth to clean the surface of the device. · Do not paint the device. Paint can clog the moving parts and prevent proper operation. These suggestions apply equally to your device, charger, or any accessory.

Recycle Always return your used electronic products, batteries, and packaging materials to dedicated collection points. This way you help prevent uncontrolled waste disposal and promote the recycling of materials. Check product environmental information and how to recycle your Nokia products at www.nokia.com/wecycle, or nokia.mobi/wecycle. The crossed-out wheeled-bin symbol on your product, battery, literature, or packaging reminds you that all electrical and electronic products, batteries, and accumulators must be taken to separate collection at the end of th.



[You're reading an excerpt. Click here to read official NOKIA
BLUETOOTH STEREO HEADSET BH-108 user guide
http://yourpdfguides.com/dref/2737769](http://yourpdfguides.com/dref/2737769)