



Your PDF Guides

You can read the recommendations in the user guide, the technical guide or the installation guide for NOKIA BLUETOOTH HEADSET BH-607. You'll find the answers to all your questions on the NOKIA BLUETOOTH HEADSET BH-607 in the user manual (information, specifications, safety advice, size, accessories, etc.). Detailed instructions for use are in the User's Guide.

User manual NOKIA BLUETOOTH HEADSET BH-607

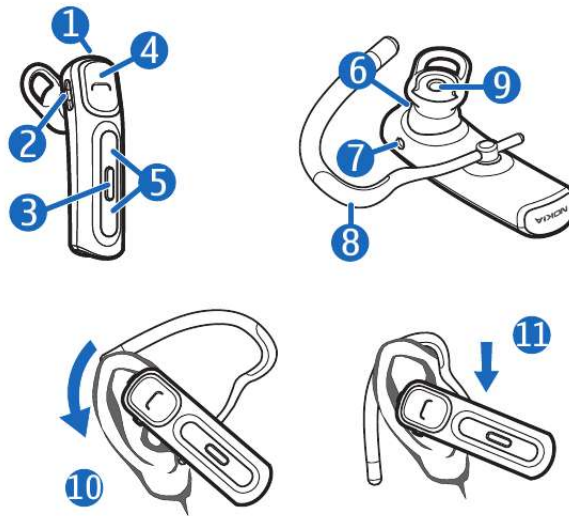
User guide NOKIA BLUETOOTH HEADSET BH-607

Operating instructions NOKIA BLUETOOTH HEADSET BH-607

Instructions for use NOKIA BLUETOOTH HEADSET BH-607

Instruction manual NOKIA BLUETOOTH HEADSET BH-607

Nokia Bluetooth Headset BH-607



[You're reading an excerpt. Click here to read official NOKIA BLUETOOTH HEADSET BH-607 user guide](http://yourpdfguides.com/dref/2737803)

<http://yourpdfguides.com/dref/2737803>

Manual abstract:

A copy of the Declaration of Conformity can be found at http://www.nokia.com/phones/declaration_of_conformity/. The products described in this document without prior notice. Bluetooth is a registered trademark of Bluetooth SIG, Inc. To the maximum extent permitted by applicable law, under no circumstances shall Nokia or any of its licensors be responsible for any loss of data or income or any special, incidental, consequential or indirect damages howsoever caused. The contents of this document are provided "as is". Except as required by applicable law, no warranties of any kind, either express or implied, including, but not limited to, the implied warranties of merchantability and fitness for a particular purpose, are made in relation to the accuracy, reliability or contents of this document. Nokia reserves the right to revise this document or withdraw it at any time without prior notice. The availability of particular products may vary by region.

Please check with your Nokia dealer for details. This device may contain commodities, technology or software subject to export laws and regulations from the US and other countries. Diversion contrary to law is prohibited. © 2009 Nokia. All rights reserved.

Nokia, Nokia Connecting People and the Nokia Original Accessories logo are trademarks or registered trademarks of Nokia Corporation. Nokia tune is a sound mark of Nokia Corporation. Other product and company names mentioned herein may be trademarks or tradenames of their respective owners. Reproduction, transfer, distribution, or storage of part or all of the contents in this document in any form without the prior written permission of Nokia is prohibited. Nokia operates a policy of continuous development.

Nokia reserves the right to make changes and improvements to any of ENGLISH Introduction With the Nokia Bluetooth Headset BH-607, you can make and answer calls hands-free with your compatible mobile device. @@Read this user guide carefully before using the headset. @@This product may contain small parts. @@@@With the application, you can also view headset information and define headset settings when the headset is connected to your device. For details, read the built-in help of the application. If the application is not already installed in your mobile device, check the availability of the application for your device from the support pages of this headset at www.nokia.com/support or your local Nokia website. If the application is not available for your Nokia device, you can use the ENGLISH shortcut key to mute the microphone during a call. interference from obstructions, such as walls, or other electronic devices.

The headset is compliant with the Bluetooth Specification 2.1 + EDR supporting the Headset Profile 1.1 and Hands-Free Profile 1.5. Check with the manufacturers of other devices to determine their compatibility with this device. Bluetooth wireless technology Bluetooth wireless technology allows you to connect compatible devices without cables. The headset and the other device do not need to be in line of sight, but they should be within 10 metres (33 feet) of each other. Connections may be subject to Get started The headset contains the following parts shown on the title page: power key (1), volume key (2), My own key (3), answer/end key (4), microphones (5), indicator light (6), charger connector (7), earloop (8), and earpiece (9). Before using the headset, you must charge the battery and pair the headset with a compatible device. Parts of the device are magnetic.

Metallic materials may be attracted to the device. Do not place credit cards or other magnetic storage media near the device, because information stored on them may be erased. Charge the battery Before charging the battery, carefully read "Battery and charger information". ENGLISH Warning: Use only chargers approved by Nokia for use with this particular model. The use of any other types may invalidate any approval or warranty, and may be dangerous. Use of unapproved chargers may present a risk of fire, explosion, or other hazard. When you disconnect the power cord of any accessory, grasp and pull the plug, not the cord. 1. Connect the charger to a wall outlet. 2.

Connect the charger cable to the charger connector. The red indicator light is displayed during charging. Charging the battery fully may take up to 1 hour. Charging the battery with the AC-5 charger for 15 minutes provides up to 5 hours of talk time. 3. When the battery is fully charged, the green indicator light is displayed. Disconnect the charger from the headset, then from the wall outlet. The fully charged battery has power for up to 7 hours of talk time or up to 160 hours of standby time. @@If the indicator light is green, the charge level is sufficient. If the light is yellow, you may need to recharge the battery soon.

If the light is red, recharge the battery. @@@@Ensure that your mobile device is switched on and the headset is off. to connect to one or two last connected devices. When the headset 2. @@The headset light flashes slowly. @@quickly. @@@@quickly. 3. @@For details, see device. @@eight devices, but you can connect it 4.

@@@found devices. ENGLISH 5. @@@@To use the headset with the earloop, attach the earloop to it (12). To detach the earloop, gently pull it from the headset. Slide the earloop behind your ear (10), and point the headset towards your mouth (11). Push or pull the earloop to set its length. The selected volume level is saved for the device that you currently use with the headset. Calls To make a call, use your mobile device in the normal way when the headset is connected to it. To redial the number you last called (if your mobile device supports this feature with the headset), when no call is in progress, press the answer/ end key twice. To activate voice dialling (if your mobile device supports this feature with the headset), when no call is in Adjust volume progress, press and hold the answer/ The headset automatically adjusts the end key for about 2 seconds.

Proceed volume according to ambient noise. To as described in the user guide of the manually adjust the volume, slide the mobile device. volume key up or down. To adjust the To answer or end a call, press the volume quickly, slide and hold the key. answer/end key. To reject a call, press this key twice. ENGLISH To mute or unmute the microphone during a call, press the volume key. The headset beeps, and a related icon is displayed on your device (if supported by the device). To switch a call between the headset and a compatible connected device, press and hold the answer/end key for about 2 seconds. To answer a waiting call and put the active call on hold, press and hold the answer/end key for about 2 seconds.

To end the active call and make the call on hold active, press the answer/ end key. To switch between the active call and the call on hold, press and hold the answer/end key for about 2 seconds. Manage two calls To manage two calls at the same time, your mobile device must support the Bluetooth Hands-Free Profile 1.



[You're reading an excerpt. Click here to read official NOKIA
BLUETOOTH HEADSET BH-607 user guide
http://yourpdfguides.com/dref/2737803](http://yourpdfguides.com/dref/2737803)

5, and call waiting must be activated in the device. Call waiting is a network service and is available when the headset is connected to only one device. To answer a waiting call and end the active call, press the answer/end key. Turn lights on or off By default, the indicator lights are shown in all situations. @@@@The green indicator light flashes once. @@@@To allow the headset to connect to two devices, switch off the headset, and press and hold the power key, and slide and hold the volume key up for about 5 seconds. The green indicator light flashes once.

To allow the headset to connect to only one device, switch off the headset, and press and hold the power key, and slide and hold the volume key down for about 5 seconds. The yellow indicator light flashes once. Clear settings or reset To clear all the settings from the headset (including settings you have defined with the Nokia Accessory Setup Application), switch off the headset, and press and hold the power key and the answer/end key at the same time for about 8 seconds. The headset beeps twice, and the red and green indicator lights alternate. After the settings are cleared, the headset enters pairing mode.

To reset the headset if it stops functioning, even thouture, or packaging reminds you that all electrical and electronic products, batteries, and accumulators must be taken to separate collection at the end of their working life. This requirement applies in the European Union. Do not dispose of these products as unsorted municipal waste. For more environmental information, see the product EcoDeclarations at www.nokia.com/environment.



[You're reading an excerpt. Click here to read official NOKIA BLUETOOTH HEADSET BH-607 user guide](http://yourpdfguides.com/dref/2737803)
<http://yourpdfguides.com/dref/2737803>