

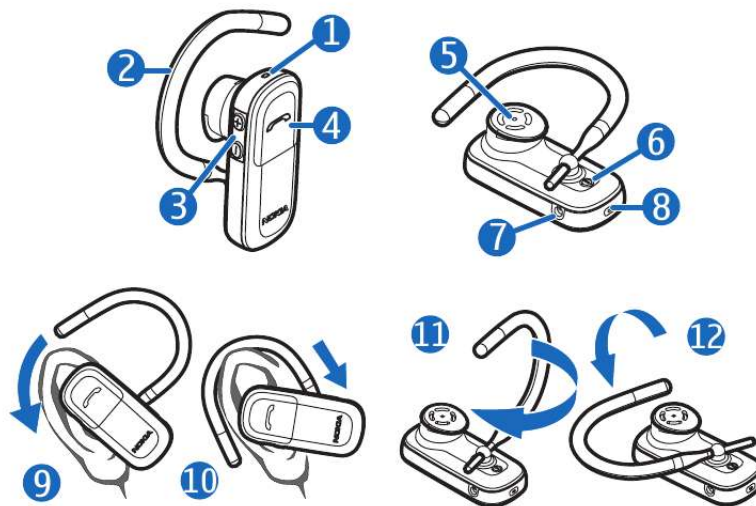


Your PDF Guides

You can read the recommendations in the user guide, the technical guide or the installation guide for NOKIA BLUETOOTH HEADSET BH-104. You'll find the answers to all your questions on the NOKIA BLUETOOTH HEADSET BH-104 in the user manual (information, specifications, safety advice, size, accessories, etc.). Detailed instructions for use are in the User's Guide.

User manual NOKIA BLUETOOTH HEADSET BH-104
User guide NOKIA BLUETOOTH HEADSET BH-104
Operating instructions NOKIA BLUETOOTH HEADSET BH-104
Instructions for use NOKIA BLUETOOTH HEADSET BH-104
Instruction manual NOKIA BLUETOOTH HEADSET BH-104

Nokia Bluetooth Headset BH-104



9213523/2



[You're reading an excerpt. Click here to read official NOKIA BLUETOOTH HEADSET BH-104 user guide](http://yourpdfguides.com/dref/2376818)
<http://yourpdfguides.com/dref/2376818>

Manual abstract:

A copy of the Declaration of Conformity can be found at http://www.nokia.com/phones/declaration_of_conformity/. and company names mentioned herein may be trademarks or tradenames of their respective owners. Reproduction, transfer, distribution, or storage of part or all of the contents in this document in any form without the prior written permission of Nokia is prohibited. Bluetooth is a registered trademark of Bluetooth SIG, Inc. Nokia operates a policy of ongoing development. Nokia reserves the right to make changes and improvements to any of the products described in this document without prior notice. To the maximum extent permitted by applicable law, under no circumstances shall Nokia or any of its licensors be responsible for any loss of data or income or any special, incidental, consequential or indirect damages howsoever caused. The contents of this document are provided "as is".

Except as required by applicable law, no warranties of any kind, either express or implied, including, but not limited to, the implied warranties of merchantability and fitness for a particular purpose, are made in relation to the accuracy, reliability or Hereby, NOKIA CORPORATION declares that this BH-104A product is in compliance with the essential requirements and other relevant provisions of Directive 1999/5/EC. A copy of the Declaration of Conformity can be found at http://www.nokia.com/phones/declaration_of_conformity/. © 2008-2009 Nokia.

All rights reserved. Nokia, Nokia Connecting People and the Nokia Original Accessories logo are trademarks or registered trademarks of Nokia Corporation. Nokia tune is a sound mark of Nokia Corporation. Other product ENGLISH contents of this document. Nokia reserves the right to revise this document or withdraw it at any time without prior notice.

The availability of particular products may vary by region. Please check with your Nokia dealer for details. @@@@Read this user guide carefully before using the headset. Also, read the user guide for your phone. This product may contain small parts. Keep them out of the reach of small children. The surface of this device is nickel-free. @@@@The headset is compliant with Bluetooth Specification 2.1 + EDR supporting the Headset Profile 1.1 and Hands-Free Profile 1.

5. Check with the manufacturers of other devices to determine their compatibility with this device. Bluetooth wireless technology Bluetooth wireless technology allows you to connect compatible devices without cables. The phone and the ENGLISH Get started The headset contains the following parts shown on the title page: indicator light (1), earloop (2), volume keys (3), answer/end key (4), earpiece (5), power key (6), charger connector (7), and microphone (8).

Before using the headset, you must charge the battery and pair the headset with a compatible phone. with this particular model. The use of any other types may invalidate any approval or warranty, and may be dangerous. When you disconnect the power cord of any accessory, grasp and pull the plug, not the cord. 1. Connect the charger to a wall outlet.

2. Connect the charger cable to the charger connector. The red Parts of the device are magnetic. Metallic indicator light is displayed during materials may be attracted to the device. Do not place credit cards or other charging.

Charging the battery magnetic storage media near the device, fully may take up to 2 hours. because information stored on them may 3. When the battery is fully charged, be erased. the green indicator light is displayed. Disconnect the charger Charge the battery from the headset, then from the Before charging the battery, carefully wall outlet.

read "Battery and charger The fully charged battery has power information". for up to 10 hours of talk time or up to Warning: Use only chargers 200 hours of standby time. approved by Nokia for use ENGLISH To check the battery charge when the headset is not connected to a charger, press the power key. If the indicator light is green, the charge level is sufficient. If the light is yellow, you may need to recharge the battery soon. If the light is red, recharge the battery.

When the battery charge is low, the headset beeps every 5 minutes and the red indicator light flashes. connected to a phone within about 30 minutes, it switches off automatically. Pair and connect the headset Before using the headset, you must pair and connect it with a compatible phone. 1.

Ensure that your phone is on and the headset is off. 2. Press and hold the power key (for about 5 seconds) until the green indicator light starts to flash Switch on or off quickly. To switch on, press and hold the power 3. Within about 3 minutes, activate key for about 2 seconds. The headset the Bluetooth feature on the beeps, and the green indicator light is phone, and set it to search for displayed. The headset tries to Bluetooth devices. connect to a paired phone. 4.

@@power key for about 2 seconds when the headset is on.

The headset beeps, 5. @@In some displayed. @@@@Carefully bend the earloop around your ear for the best fit. Push or pull the earloop to set its length. @@@@To reject a call, press this key twice.

To adjust the volume, press either volume key. @@@@Recharge your battery only with Nokia approved chargers designated for this device. Use of an unapproved charger may present a risk of fire, explosion, leakage, or other hazard. If a battery is being used for the first time or if the battery has not been used for a prolonged period, it may be necessary to connect the charger, then disconnect and reconnect it to begin charging the battery. If the battery is completely discharged, it may take several minutes before the charging indicator light is displayed.

Unplug the charger from the electrical plug and the device when not in use. Do not leave a fully charged battery connected to a charger, since overcharging may shorten its lifetime. If left unused, a fully charged battery will lose its charge over time. Always try to keep the battery between 15°C and 25°C (59°F and 77°F). Extreme temperatures reduce the capacity and lifetime of the battery. A device with a hot or cold battery may not work temporarily. Battery performance is particularly limited in temperatures well below freezing. Do not dispose of batteries in a fire as they may explode. Batteries may also explode if damaged. ENGLISH Never use any charger that is damaged.

Important: Battery talk and standby times are estimates only and depend on network conditions, features used, battery age and condition, temperatures to which battery is exposed, and many other factors. The amount of time a device is used for calls will affect its standby time. Likewise, the amount of time that the device is turned on and in the standby mode will affect its talk time. Care and maintenance Your device is a product of superior design and craftsmanship and should be treated with care. The following suggestions will help you protect your warranty coverage. · Keep the device dry.



[You're reading an excerpt. Click here to read official NOKIA
BLUETOOTH HEADSET BH-104 user guide
http://yourpdfguides.com/dref/2376818](http://yourpdfguides.com/dref/2376818)

Precipitation, humidity, and all types of liquids or moisture can contain minerals that will corrode electronic circuits. If your device does get wet, allow it to dry completely. · Do not use or store the device in dusty, dirty areas. Its moving parts and electronic components can be damaged.

· Do not store the device in hot areas. @@ · Do not store the device in cold areas. @@ · Do not attempt to open the device. · Do not drop, knock, or shake the device. @@ · Do not paint the device.

Paint can clog the moving parts and prevent proper operation. @@ If any device is not working properly, take it to the nearest authorised service facility for service. Recycle The crossed-out wheeled-bin symbol on your product, battery, literature, or packaging reminds you that all electrical and electronic products, batteries, and accumulators must be taken to separate collection at the end of their working life. This requirement applies in the European Union.

Do not dispose of these products as unsorted municipal waste.

For more environmental information, see the product Eco-Declarations at www.nokia.com/environment. Always return your used electronic products, batteries, and packaging materials to a dedicated collection point. This way you help prevent uncontrolled waste disposal and promote the recycling of materials. More detailed information is available from the product retailer, local waste authorities, national producer responsibility organisati.



[You're reading an excerpt. Click here to read official NOKIA](#)

[BLUETOOTH HEADSET BH-104 user guide](#)

<http://yourpdfguides.com/dref/2376818>