

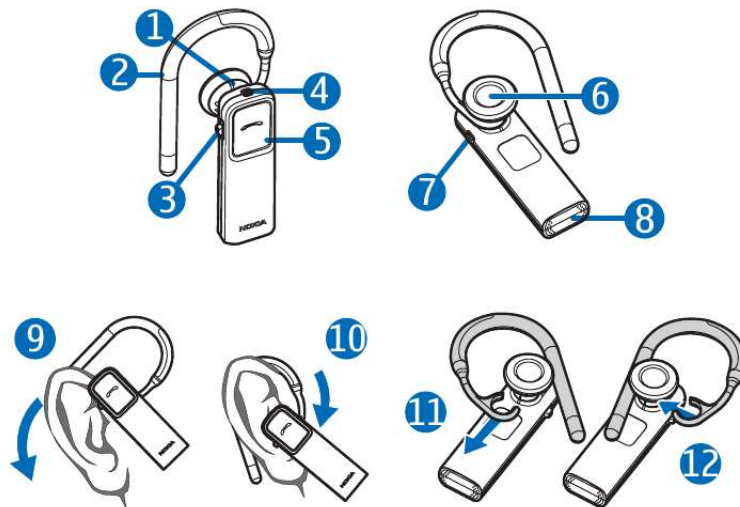


Your PDF Guides

You can read the recommendations in the user guide, the technical guide or the installation guide for NOKIA BH-606. You'll find the answers to all your questions on the NOKIA BH-606 in the user manual (information, specifications, safety advice, size, accessories, etc.). Detailed instructions for use are in the User's Guide.

User manual NOKIA BH-606
User guide NOKIA BH-606
Operating instructions NOKIA BH-606
Instructions for use NOKIA BH-606
Instruction manual NOKIA BH-606

Nokia Bluetooth Headset BH-606



Issue 1.1



[You're reading an excerpt. Click here to read official NOKIA BH-606 user guide](#)

<http://yourpdfguides.com/dref/845438>

Manual abstract:

1 DECLARATION OF CONFORMITY Hereby, NOKIA CORPORATION declares that this HS-128W product is in compliance with the essential requirements and other relevant provisions of Directive 1999/5/EC. A copy of the Declaration of Conformity can be found at http://www.nokia.com/phones/declaration_of_conformity/. © 2008 Nokia. All rights reserved. Nokia, Nokia Connecting People and the Nokia Original Accessories logo are trademarks or registered trademarks of Nokia Corporation. Other product and company names mentioned herein may be trademarks or tradenames of their respective owners. Reproduction, transfer, distribution, or storage of part or all of the contents in this document in any form without the prior written permission of Nokia is prohibited. Bluetooth is a registered trademark of Bluetooth SIG, Inc.

Nokia operates a policy of ongoing development. Nokia reserves the right to make changes and improvements to any of the products described in this document without prior notice. To the maximum extent permitted by applicable law, under no circumstances shall Nokia or any of its licensors be responsible for any loss of data or income or any special, incidental, consequential or indirect damages howsoever caused. The contents of this document are provided "as is". Except as required by applicable law, no warranties of any kind, either express or implied, including, but not limited to, the implied warranties of merchantability and fitness for a particular purpose, are made in relation to the accuracy, reliability or contents of this document.

Nokia reserves the right to revise this document or withdraw it at any time without prior notice. The availability of particular products may vary by region.

@@@Read this user guide carefully before using the headset. Also, read the user guide for your phone. This product may contain small parts. Keep them out of the reach of small children. other. @@The headset is compliant with the Bluetooth Specification 2.0 + EDR supporting the Headset Profile 1.1 and Hands-Free Profile 1.5. Check with the manufacturers of other devices to determine their compatibility with this device. Bluetooth wireless technology Bluetooth wireless technology allows you to connect compatible devices without cables. The phone and the headset do not need to be in line of sight, but they should be within 10 metres (33 feet) of each © 2008 Nokia. All rights reserved.

3 Get started The headset contains the following parts shown on the title page: white indicator light (1), earloop (2), volume key (3), power key (4), answer/end key (5), earpiece (6), charger connector (7), and microphone (8). Before using the headset, you must charge the battery and pair the headset with a compatible phone. Parts of the device are magnetic. Metallic materials may be attracted to the device. Do not place credit cards or other magnetic storage media near the device, because information stored on them may be erased. Charge the battery Before charging the battery, carefully read "Battery and charger information". Warning: Use only chargers approved by Nokia for use with this particular model. The use of any other types may invalidate any approval or warranty, and may be dangerous. When you disconnect the power cord of any accessory, grasp and pull the plug, not the cord. 1. Connect the charger to a wall outlet. 2. Connect the charger cable to the charger connector. During charging, the indicator light is on and the headset cannot be 4 © 2008 Nokia. All rights reserved.

1. Ensure that your phone is on and the headset is off. 2. Press and hold the power key (for about 5 seconds) until the indicator light starts to flash quickly. 3. Activate the Bluetooth feature on the phone, and set it to search for Bluetooth devices. 4. Select the headset from the list of found devices. Switch on or off 5. Enter the passcode 0000 to To switch on, press and hold the pair and connect the headset to power key for about 2 seconds. The your phone. In some phones, © 2008 Nokia. All rights reserved. used. Charging the battery fully may take up to 2 hours.

3. When the battery is fully charged, the indicator light turns off. Disconnect the charger from the headset, then from the wall outlet. If the headset was connected to your phone before charging, the headset connects to it again. @@@@The headset tries to connect to a paired phone. To switch off, press and hold the power key for about 2 seconds. @@Gently push the earpiece into your ear. @@no call is in progress, press the answer/end key twice. @@Proceed as described in the phone user guide. To answer or end a call, press the answer/end key.

To reject a call, press this key twice. @@@@Recharge your battery only with Nokia approved chargers designated for this device. Use of an unapproved charger may present a risk of fire, explosion, leakage, or other hazard. 8 If a battery is being used for the first time or if the battery has not been used for a prolonged period, it may be necessary to connect the charger, then disconnect and reconnect it to begin charging the battery. If the battery is completely discharged, it may take several minutes before the charging indicator light is displayed.

Unplug the charger from the electrical plug and the device when not in use. Do not leave a fully charged battery connected to a charger, since overcharging may shorten its lifetime. If left unused, a fully charged battery will lose its charge over time. Always try to keep the battery between 15°C and 25°C (59°F and 77°F). Extreme temperatures reduce © 2008 Nokia.

All rights reserved. the capacity and lifetime of the battery. A device with a hot or cold battery may not work temporarily. Battery performance is particularly limited in temperatures well below freezing. Do not dispose of batteries in a fire as they may explode. Batteries may also explode if damaged. Never use any charger that is damaged. Important: Battery talk and standby times are estimates only and depend on network conditions, features used, battery age and condition, temperatures to which battery is exposed, and many other factors. The amount of time a device is used for calls will affect its standby time.

@@@@@ Keep the device dry.

@@If your device does get wet, allow it to dry completely. · Do not use or store the device in dusty, dirty areas. Its moving parts and electronic components can be damaged. · Do not store the device in hot areas. High temperatures can shorten the life of electronic devices, damage batteries, and warp or melt certain plastics. · Do not store the device in cold areas. When the device returns to 10 its normal temperature, moisture can form inside the device and damage electronic circuit boards. · Do not attempt to open the device. · Do not drop, knock, or shake the device. Rough handling can break internal circuit boards and fine mechanics.

· Do not use harsh chemicals, cleaning solvents, or strong detergents to clean the device.



[You're reading an excerpt. Click here to read official NOKIA BH-606 user guide](http://yourpdfguides.com/dref/845438)
<http://yourpdfguides.com/dref/845438>

· Do not paint the device. Paint can clog the moving parts and prevent proper operation. These suggestions apply equally to your device, charger, or any accessory. If any device is not working properly, take it to the nearest authorised service facility for service.

© 2008 Nokia. All rights reserved. .



[You're reading an excerpt. Click here to read official NOKIA BH-606 user guide](http://yourpdfguides.com/dref/845438)

<http://yourpdfguides.com/dref/845438>