

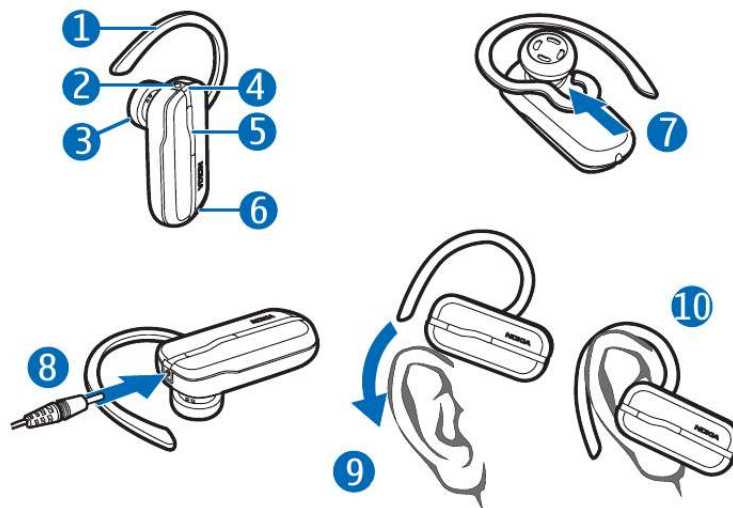


# Your PDF Guides

You can read the recommendations in the user guide, the technical guide or the installation guide for NOKIA BH-102. You'll find the answers to all your questions on the NOKIA BH-102 in the user manual (information, specifications, safety advice, size, accessories, etc.). Detailed instructions for use are in the User's Guide.

User manual NOKIA BH-102  
User guide NOKIA BH-102  
Operating instructions NOKIA BH-102  
Instructions for use NOKIA BH-102  
Instruction manual NOKIA BH-102

## Nokia Bluetooth Headset BH-102



Issue 1



[You're reading an excerpt. Click here to read official NOKIA BH-102 user guide](http://yourpdfguides.com/dref/845360)  
<http://yourpdfguides.com/dref/845360>

**Manual abstract:**

A copy of the Declaration of Conformity can be found at [http://www.nokia.com/phones/declaration\\_of\\_conformity/](http://www.nokia.com/phones/declaration_of_conformity/). © 2008 Nokia. All rights reserved. Nokia and Nokia Connecting People are registered trademarks of Nokia Corporation. Other product and company names mentioned herein may be trademarks or tradenames of their respective owners. Reproduction, transfer, distribution, or storage of part or all of the contents in this document in any form without the prior written permission of Nokia is prohibited. Bluetooth is a registered trademark of Bluetooth SIG, Inc. Nokia operates a policy of ongoing development.

Nokia reserves the right to make changes and improvements to any of the products described in this document without prior notice. To the maximum extent permitted by applicable law, under no circumstances shall Nokia or any of its licensors be responsible for any loss of data or income or any special, incidental, consequential or indirect damages howsoever caused. The contents of this document are provided "as is". Except as required by applicable law, no warranties of any kind, either express or implied, including, but not limited to, the implied warranties of merchantability and fitness for a particular purpose, are made in relation to the accuracy, reliability or contents of this document. Nokia reserves the right to revise this document or withdraw it at any time without prior notice.

The availability of particular products may vary by region. @@@@ You can use the headset with compatible phones that support Bluetooth wireless technology. Read this user guide carefully before using the headset. Also, read the user guide for your phone. It provides important safety and maintenance information.

Keep the headset out of the reach of small children. devices without cables. The phone and the headset do not need to be in line of sight, but they should be within 10 metres (33 feet) of each other. Connections may be subject to interference from obstructions, such as walls, or other electronic devices. The headset complies with the Bluetooth Specification 2.0 + EDR that supports the Headset Profile 1.1 and Hands-Free Profile 1.5. Check with the manufacturers of other devices to determine their compatibility with this device. Bluetooth wireless technology Bluetooth wireless technology allows you to connect compatible © 2008 Nokia.

All rights reserved. 3 Get started The headset contains the following parts shown on the title page: earloop (1), charger connector (2), earpiece (3), blue indicator light (4), multifunction key (5), and microphone (6). Before using the headset, you must charge the battery and pair the headset with a compatible phone. Parts of the device are magnetic. Metallic materials may be attracted to the device. Do not place credit cards or other magnetic storage media near the device, because information stored on them may be erased. following chargers: AC-3, AC-4, AC-5, and DC-4. Warning: Use only chargers approved by Nokia for use with this particular enhancement. The use of any other types may invalidate any approval or warranty, and may be dangerous. When you disconnect the power cord of any enhancement, grasp and pull the plug, not the cord.

Charge the battery Before charging the battery, carefully read "Battery information". 1. Connect the charger to a wall outlet. 2. Connect the charger cable to the charger connector (8).

The indicator light is on during Chargers This device is intended for use when supplied with power from the 4 © 2008 Nokia. All rights reserved. 1. @@2. @@3.

@@4. @@multifunction key for about 2 to 4 seconds. The headset beeps, and 5. Enter the passcode 0000 to the indicator light is displayed. @@In some phones, paired device. you may need to make the © 2008 Nokia. All rights reserved. charging. Charging the battery fully may take up to 2 hours. 3.

When the battery is fully charged, the indicator light turns off. Disconnect the charger from the headset and the wall outlet. @@@@ You only need to pair the headset with your phone once. @@@@ All rights reserved. multifunction key for about 2 to 4 seconds. Proceed as described in the phone user guide. To answer or end a call, press the multifunction key. To reject a call, press this key twice. To adjust the volume during a call, use the phone volume keys. @@@@ Use of an unapproved 7 © 2008 Nokia.

All rights reserved. charger may present a risk of fire, explosion, leakage, or other hazard. If a battery is being used for the first time or if the battery has not been used for a prolonged period, it may be necessary to connect the charger, then disconnect and reconnect it to begin charging the battery. If the battery is completely discharged, it may take several minutes before the charging indicator light is displayed. Unplug the charger from the electrical plug and the device when not in use.

Do not leave a fully charged battery connected to a charger, since overcharging may shorten its lifetime. If left unused, a fully charged battery will lose its charge over time. Always try to keep the battery between 15°C and 25°C (59°F and 77°F). Extreme temperatures reduce the capacity and lifetime of the battery. A device with a hot or cold battery may not work temporarily.

8 Battery performance is particularly limited in temperatures well below freezing. Do not dispose of batteries in a fire as they may explode. Batteries may also explode if damaged. Never use any charger that is damaged. Important: Battery talk and standby times are estimates only and depend on network conditions, features used, battery age and condition, temperatures to which battery is exposed, and many other factors. The amount of time a device is used for calls will affect its standby time. @@@@ · Keep the device dry. Precipitation, humidity, and all types of liquids or moisture can contain minerals that will corrode electronic circuits. If your device does get wet, allow it to dry completely. · Do not use or store the device in dusty, dirty areas.

Its moving parts and electronic components can be damaged. · Do not store the device in hot areas. High temperatures can shorten the life of electronic devices, damage batteries, and warp or melt certain plastics. · Do not store the device in cold areas. When the device returns to its normal temperature, moisture can form inside the device and damage electronic circuit boards. · Do not attempt to open the device. · Do not drop, knock, or shake the device. Rough handling can break internal circuit boards and fine mechanics. · Do not use harsh chemicals, cleaning solvents, or strong detergents to clean the device. · Do not paint the device.

Paint can clog the moving parts and prevent proper operation. If the device is not working properly, take it to the nearest authorised service facility for service. © 2008 Nokia. All rights reserved. 9 .



[You're reading an excerpt. Click here to read official NOKIA BH-102 user guide](http://yourpdfguides.com/dref/845360)  
<http://yourpdfguides.com/dref/845360>