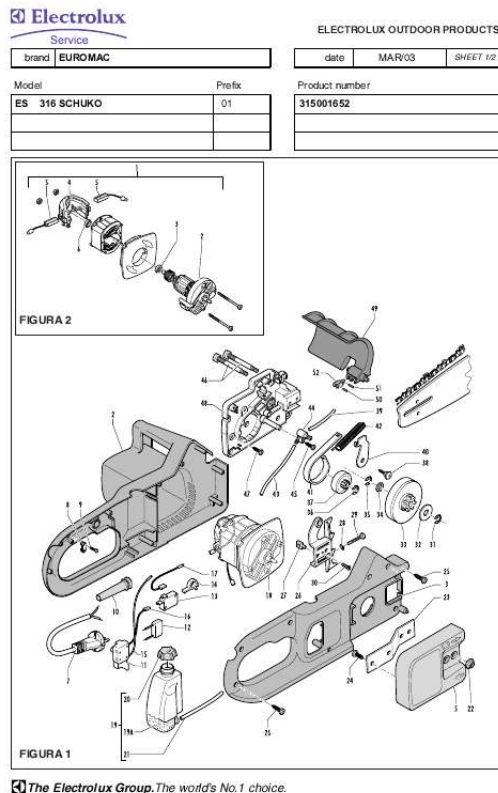




Your PDF Guides

You can read the recommendations in the user guide, the technical guide or the installation guide for MCCULLOCH ES 316 SCHUKO. You'll find the answers to all your questions on the MCCULLOCH ES 316 SCHUKO in the user manual (information, specifications, safety advice, size, accessories, etc.). Detailed instructions for use are in the User's Guide.

User manual MCCULLOCH ES 316 SCHUKO
User guide MCCULLOCH ES 316 SCHUKO
Operating instructions MCCULLOCH ES 316 SCHUKO
Instructions for use MCCULLOCH ES 316 SCHUKO
Instruction manual MCCULLOCH ES 316 SCHUKO



[You're reading an excerpt. Click here to read official MCCULLOCH ES 316 SCHUKO user guide](http://yourpdfguides.com/dref/3599058)
<http://yourpdfguides.com/dref/3599058>

Manual abstract:

*The world's No.1 choice. ELECTROLUX OUTDOOR PRODUCTS brand EUROMAC Model ES 316 SCHUKO Prefix 01 date Product number 315001652
MAR/03 SHEET 2/2 FIGURA 1 pos 2 3 4 C C 5 7 8 9 10 C 11 12 13 14 15 16 17 C C B C A 18 19 20 21 22 25 26 A B B B C B C 27 28 29 30 31 32 33 34 35
P/N McC 241847 241848 248317 P/N ELX Q.ty DESCRIPTION LEFT CRANKCASE RIGHT CRANKCASE COVER ECS 300 PINION COVER PLATE
WIRE+PLUG (SCHUKO) CLAMP SCREW M4X14 WIRE PROTECTION SWITCH NOISE REDUCTION DEVICE MICRO SWITCH SWITCH LEVER
MOTOR/SWITCH WIRE SWITCH/ MICROSWITCH WIRE MOTOR SWITCH WIRE pos 36 37 38 39 40 41 42 C B A 43 44 45 46 47 48 C 49 50 51 52 C 53
P/N McC 241073 241041 241045 229743 241044 241500 241451 229743 241183 240862 241035 240862 241029 247717 P/N ELX Q.ty DESCRIPTION D 8
mm. .*



[You're reading an excerpt. Click here to read official MCCULLOCH
ES 316 SCHUKO user guide
http://yourpdfguides.com/dref/3599058](http://yourpdfguides.com/dref/3599058)