



Your PDF Guides

You can read the recommendations in the user guide, the technical guide or the installation guide for MAXDATA PLATINUM 500 I M7. You'll find the answers to all your questions on the MAXDATA PLATINUM 500 I M7 in the user manual (information, specifications, safety advice, size, accessories, etc.). Detailed instructions for use are in the User's Guide.

User manual MAXDATA PLATINUM 500 I M7 User guide MAXDATA PLATINUM 500 I M7 Operating instructions MAXDATA PLATINUM 500 I M7 Instructions for use MAXDATA PLATINUM 500 I M7 Instruction manual MAXDATA PLATINUM 500 I M7

MAXDATA PLATINUM 500 I – Quick Start Guide

Thank you for buying a MAXDATA PLATINUM 500 I Server. This document describes how to set up the system, turn on the system, and complete configuration for the system.

Follow the link "User's Guide" in the user manual to access the download area and download a more detailed guide.

1 Safety

Warning

- Installation and service:** Installation and service of this product is to be performed only by qualified service personnel to avoid all injury from electrical shock or energy hazard.
- End-user safety:** To avoid the complete system applicable safety, warning, and other requirements, no covers should be removed and all trays must be fitted with drive covers.
- Battery Safety:** There is a danger of explosion if the battery is not correctly recharged. Dispose of used batteries in accordance with the manufacturer's instructions and national regulations.

Caution

- Electrostatic discharge:** Observe normal Electrostatic Discharge (ESD) procedures during system (reparation) to avoid possible damage to the server board and/or other components of the server system.
- Server system power:** System power on/off: The power button DOES NOT turn off the system AC power. To remove power from server system, you must unplug the AC power cord from the wall outlet of the device.
- Safety instruction for upright systems:** To ensure stability, the floor stands must be turned outward.

2 Site Selection

- The system is designed to operate in a typical office environment. Choose a site that is:
 - Clean, dry and free of airborne particles (other than normal room dust).
 - Well-ventilated and away from sources of heat (including direct sunlight) and moisture.
 - Free from electrical vibration or physical shock.
 - Isolated from strong electromagnetic fields produced by electrical devices.

- In regions that are susceptible to natural storms, we recommend you install your system in a surge protector and disconnect when not in use to protect your system during an electrical storm.
- Provide with properly grounded wall outlet.
- Provide with sufficient space to access the power supply controls, because they serve as the production power disconnect.

3 System Overview

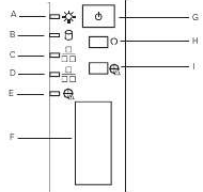
Technical Specification

- Dimensions (incl. front bezel):
 - 440 mm high
 - 222 mm wide
 - 855 mm deep
 - 38.5 kg net weight
- System Power:
 - Redundant Power Supply (two line connectors, one for each power module)
 - 200 or 400 W (1000 Hz, 11 A max.)
 - Single Power Supply
 - 100-127 V, 200-230 V @ 50/60 Hz, 15 A max.
 - Temperature Range: 5°C to 35°C

Regulatory Compliance

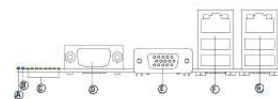
- The product complies to the following requirements:
 - EN 60950 – Safety
 - EN 60950-2 – Emission
 - EN 60950-3-1 – Immunity
 - EN 61010-2-2 – Other notices
 - EN 61010-3-2 – Warning & clear
 - CE – EMC Directive 2002/95/EC
 - CE – RoHS Directive 2002/95/EC
- The product has a CE declaration of conformity (CONFORME Europe).
- The server system is compliant to European Directive 2002/95/EC (RoHS).

Front Controls



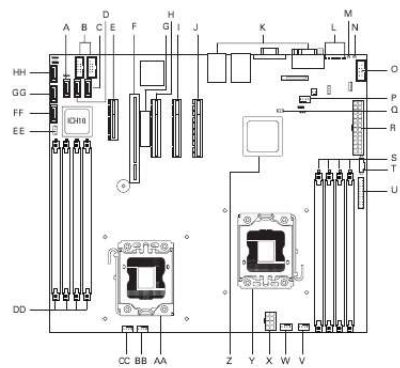
- A. Power LED
- B. HDD LED
- C. NIC2 LED
- D. NIC1 LED
- E. Critical badge/temperature
- F. Print/USB ports
- G. Power switch
- H. Reset switch
- I. Drive/battery alarm

Back Panel Connectors



- A. Status LED
- B. System identification LED
- C. Diagnostic LEDs
- D. Serial Port A
- E. Video Port
- F. NIC 1 (top, default management port), two USB ports (bottom)
- G. NIC 2 (top), two USB ports (bottom)

4 Server Board Connector and Component Locations



- A. SATA 2
- B. Internal dual port USB2.0 header
- C. SATA 5
- D. SATA 6
- E. Slot 3, PCI Express x4
- F. Slot 4, 32 bit PCI Express PCI
- G. Intel® MMIO slot
- H. Slot 5, PCI Express x8
- I. Slot 6, PCI Express x8 (rear card)
- J. Slot 7, PCI Express x8
- K. Back panel I/O ports
- L. Diagnostic LEDs
- M. Status LED
- N. ID LED
- O. Serial port 40 header
- P. System fan 3 header
- Q. SATA key
- R. Main power connector
- S. DIMM sockets of processor 1 socket (Channel A, B)
- T. Power supply auxiliary connector
- U. 28-pin front panel connector
- V. System fan 2 header
- W. CPU 1 fan header
- X. CPU power connector
- Y. CPU socket 1
- Z. Intel® CPU 5003 chipset
- AA. CPU socket 2
- AB. CPU 2 fan header
- AC. System fan 1 header
- AD. DIMM sockets of processor 2 socket (Channel C, D)
- AE. SATA SD/RO
- AF. SATA 0
- AG. SATA 1
- AH. SATA 2



You're reading an excerpt. [Click here to read official MAXDATA PLATINUM 500 I M7 user guide](http://yourpdfguides.com/dref/2876521)
<http://yourpdfguides.com/dref/2876521>

Manual abstract:

Battery Safety There is a danger of explosion if the battery is incorrectly replaced. Dispose of used batteries in accordance with the manufacturer's instructions and national regulations. *D BCE F H GI J K M N L Caution Electrostatic discharge* Observe normal Electrostatic Discharge (ESD) procedures during system integration to avoid possible damage to the server board and/or other components of the server system. *Server system power System power on/off:* The power button DOES NOT turn off the system AC power. To remove power from server system, you must unplug the AC power cord from the wall outlet or the chassis. *Safety instruction for upright system* To ensure stability, the floor stands must be turned outwards. *HH GG FF EE ICH10 O P Q R S T*

Site Selection The system is designed to operate in a typical office environment. @@@@ · Away from sources of vibration or physical shock. @@@@ · Provided with a properly grounded wall outlet. @@@@ @@@@ @@@@ @@@@ @N.

O. P. Q. R. S.

T. U. V. W. X.

Status LED ID LED External serial B header System fan 3 header SATA key Main power connector DIMM sockets of processor 1 socket (Channel A, B) Power supply auxiliary connector SSI 24-pin front panel connector System fan 2 header CPU 1 fan header CPU power connector Y. Z. AA. BB. CC. DD. EE. FF. GG. HH.

CPU socket 1 Intel® IOH 5500 chipset CPU socket 2 CPU 2 fan header System fan 1 header DIMM sockets of processor 2 socket (channel D, E) SATA SGPIO SATA 0 SATA 1 SATA 2 A B C D E G H I B A C D E F G B. C. D. E. F. G. H. I. F A. B.

C. D. Status LED System Identification LED Diagnostic LEDs Serial Port A E. F. G.

Video Port NIC 1 (top, default management port), two USB ports (bottom) NIC 2 (top), two USB ports (bottom) J. K. L. A. B.

C. D. @@G. H. .



[You're reading an excerpt. Click here to read official MAXDATA](http://yourpdfguides.com/dref/2876521)

[PLATINUM 500 I M7 user guide](http://yourpdfguides.com/dref/2876521)

<http://yourpdfguides.com/dref/2876521>