

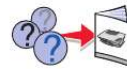


# Your PDF Guides

You can read the recommendations in the user guide, the technical guide or the installation guide for LEXMARK 2200. You'll find the answers to all your questions on the LEXMARK 2200 in the user manual (information, specifications, safety advice, size, accessories, etc.). Detailed instructions for use are in the User's Guide.

User manual LEXMARK 2200  
User guide LEXMARK 2200  
Operating instructions LEXMARK 2200  
Instructions for use LEXMARK 2200  
Instruction manual LEXMARK 2200

## LEXMARK 2200 Series All-In-One



### Safety information

- Use only the power supply provided with this product or the manufacturer's authorized replacement power supply.
  - Connect the power supply cord to an electrical outlet that is near the product and easily accessible.
  - Refer all use or repairs other than those described in the user documentation, to a professional service person.
- CAUTION:** Do not use the fax feature during a lightning storm. Do not set up this product or make any electrical or cabling connections, such as the power supply cord or telephone, during a lightning storm.

### For more help:

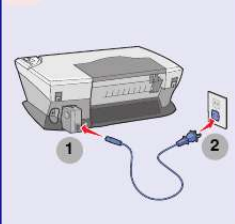
- 1 Refer to your User's Guide.
  - 2 Visit our Web site: <http://support.lexmark.com/>
  - 3 Call us at (800) 392-4130, Monday - Friday (9:00 AM - 9:00 PM EST), Saturday (9:00 AM - 6:00 PM EST).
- Phone number and support hours may change without notice.

### 1 Unpack your All-In-One.



May not be included

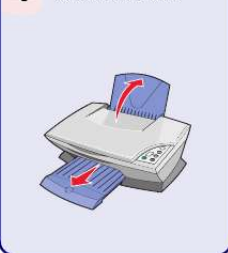
### 2 Connect the power supply cord.



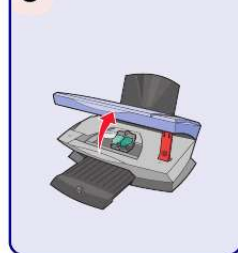
### 3 Make sure the power light is on.



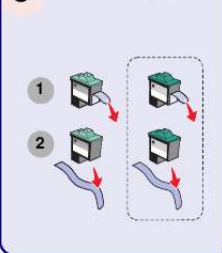
### 4 Raise the paper support and extend the paper exit tray.



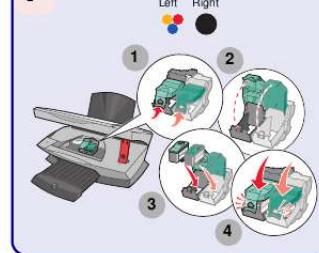
### 5 Lift the scanner unit.



### 6 Remove the sticker and tape from the print cartridge(s).



### 7 Insert the cartridge(s) and snap the lid(s) closed.



21T0070

[www.lexmark.com](http://www.lexmark.com)



PN 21T0070 EC 21T004  
© 2003 Lexmark International, Inc. All rights reserved.



[You're reading an excerpt. Click here to read official LEXMARK 2200 user guide](http://yourpdfguides.com/dref/1247865)  
<http://yourpdfguides.com/dref/1247865>

**Manual abstract:**

*- Refer service or repairs, other than those described in the user documentation, to a professional service person. 1 Unpack your All-In-One. 2 Connect the power supply cord. 3 Make sure the power light is on. CAUTION: Do not use the fax feature during a lightning storm. Do not set up this product or make any electrical or cabling connections, such as the power supply cord or telephone, during a lightning storm. For more help: 1 Refer to your User's Guide. 2 Visit our Web site. <http://support.lexmark.com/> 3 Call us at (800) 332-4120. Monday - Friday (9:00 AM - 9:00 PM EST) Saturday (Noon - 6:00 PM EST) Phone number and support times may change without notice. 1 2 May not be included 4 Raise the paper support and extend the paper exit tray. 5 Lift the scanner unit. 6 1 2 Remove the sticker and tape from the print cartridge(s). 7 Insert the cartridge(s) and snap the lid(s) closed. @@@@3 Double-click the CD-ROM drive icon. If necessary, double-click setup.exe. @@5 Follow the instructions on each screen to complete printer software installation. Macintosh 1 Remove the All-In-One software CD, and then restart your computer. 2 Insert the All-In-One software CD. 3 Double-click the Install icon. .*



**[You're reading an excerpt. Click here to read official LEXMARK 2200 user guide](http://yourpdfguides.com/dref/1247865)**  
<http://yourpdfguides.com/dref/1247865>