



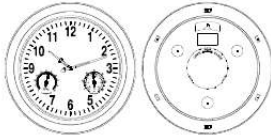
# Your PDF Guides

You can read the recommendations in the user guide, the technical guide or the installation guide for LA CROSSE TECHNOLOGY WT-3181P. You'll find the answers to all your questions on the LA CROSSE TECHNOLOGY WT-3181P in the user manual (information, specifications, safety advice, size, accessories, etc.). Detailed instructions for use are in the User's Guide.

**User manual LA CROSSE TECHNOLOGY WT-3181P**  
**User guide LA CROSSE TECHNOLOGY WT-3181P**  
**Operating instructions LA CROSSE TECHNOLOGY WT-3181P**  
**Instructions for use LA CROSSE TECHNOLOGY WT-3181P**  
**Instruction manual LA CROSSE TECHNOLOGY WT-3181P**

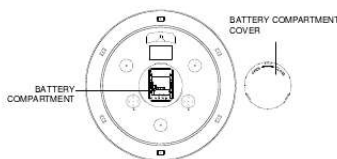
**RADIO CONTROLLED ANALOG CLOCK**  
**INSTRUCTION MANUAL**

**Quick set up instructions**  
*Welcome to the world of atomic timekeeping technology. We hope you will enjoy the convenience of never having to set your clock again and the confidence of knowing exactly what time it is.*

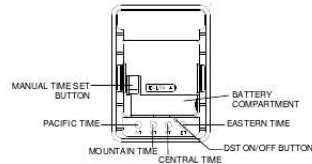


- Twist and lift open the battery compartment cover at the back of the clock and insert 1 fresh AA, LR6 1.5 volt ALKALINE battery according to the polarity marked on the case.
- Once the battery is installed, the clock will begin searching for a signal. For the initial setting, it is recommended to stand the clock in an upright position near a window. Within five minutes the clock will either receive the WWVB signal and set itself to the exact time (for the default Pacific Time Zone), or it will determine that the signal is not receivable at its current location and time of day. If a signal is not receivable, it will fast-forward the hands to the 4, 8, or 12 o'clock position and search for WWVB every two hours until a signal is received. If the time is manually set, the clock will continue to periodically search for a signal and automatically reset the hands when the signal is received.
- Press time zone button to select a time zone after the clock received the WWVB signal. If you are in the Pacific Time Zone, you are ready to hang your clock. If you are not in the Pacific Time Zone, select your time zone by pressing one of the four time zone buttons PT-Pacific Time, MT-Mountain Time, CT-Central Time, ET-Eastern Time. If multiple buttons are pressed, the clock will set to the time zone selected last. If no time zone is selected the clock will default to Pacific Time. If you live in an area that does not recognize DST (Arizona and Indiana) you must press the (unmarked) DST button for one second to deactivate your clock's DST program. For time zones outside of PT, MT, CT or ET you must manually set the time using the Manual Time set button on the back of the movement. (See instructions below).
- Replace the battery compartment cover.

**THAT'S IT! During the night your clock will automatically set itself.**



1



For a better understanding of how and why your clock works please continue reading.

**NOTHING IS MORE PRECISELY MEASURED THAN TIME!**  
And nothing keeps track of time more precisely and trouble free than La Crosse Technology atomic clocks.

Since the beginning of time, man has been fascinated with the measurement of time and has devised more accurate machines to trap and measure time. Today, time is precisely measured in the United States by the most accurate clock in North America, the Atomic Clock of the US National Institute of Standards and Technology, Time and Frequency Division in Boulder, Colorado. A team of atomic physicists continually measures every second of every day to an accuracy of ten billionths of a second per day. These physicists have created an international standard, measuring a second as 8,192,631,770 vibrations of a Cesium 133 atom in a vacuum. This atomic clock regulates the WWVB radio transmitter located in Fort Collins, Colorado, where the exact time signal is continuously broadcast throughout the United States at 60 kHz to take advantage of stable long wave radio paths found in that frequency range. Radio waves at these low frequencies use the earth and the ionosphere as a wave-guide and follow the curvature of the earth for long distances.

The built-in antenna system will receive the WWVB signal anywhere in North America within 2000 miles of Fort Collins where long-wave radio reception is undisturbed. A microprocessor activates the receiver and processes the time signal from Fort Collins overnight.

Through the radio signals, La Crosse Technology atomic clocks always keep precise time. The changeover from standard time to daylight saving time, and vice versa, takes place automatically with the same precision.

**ADDITIONAL DETAILS**  
To set up your clock simply install one fresh AA, LR6 ALKALINE battery. Due to the nature of long wave radio signals it is normally not possible to receive a signal during the day so it is best to install the battery late in the evening. Select your time zone by pressing one of the four time zone buttons PT-Pacific Time, MT-Mountain Time, CT-Central Time, ET-Eastern Time. The time zone buttons may be pressed any time after installing the batteries. If multiple buttons are pressed the clock will set to the time zone selected last. If no time zone is selected the clock will default to Pacific Time. Another time zone can be selected during or after the clock has set itself. Your clock can only set itself to one of the four time zones stated above. For time zones outside of PT, MT, CT or ET you must manually set the time using the Manual Time set button on the back of the movement.

Once the battery is installed the clock will begin searching for a signal. For the initial setting it is recommended to stand the clock in an upright position near a window. Within five minutes the clock will either receive the WWVB signal and set itself to the exact time, or it will determine that the signal is not receivable at its current location and time of day. If a signal is not receivable it will fast-forward the hands to the 4, 8, or 12 o'clock position and search for WWVB each even numbered hour until a signal is received. If the time is manually set the clock will

2



[You're reading an excerpt. Click here to read official LA CROSSE TECHNOLOGY WT-3181P user guide](http://yourpdfguides.com/dref/1296653)  
<http://yourpdfguides.com/dref/1296653>



*The original dated bill of sale must be presented upon request as proof of purchase to La Crosse Technology, Ltd or La Crosse Technology, Ltd's authorized service center. La Crosse Technology, Ltd will repair or replace this product, at our option and at no charge as stipulated herein, with new or reconditioned parts or products if found to be defective during the limited warranty period specified above. All replaced parts and products become the property of La Crosse Technology, Ltd and must be returned to La Crosse Technology, Ltd. Replacement parts and products assume the remaining original warranty, or ninety (90) days, whichever is longer.  
La Crosse Technology, Ltd will pay all expenses for labor and ma.*



[You're reading an excerpt. Click here to read official LA CROSSE TECHNOLOGY WT-3181P user guide](http://yourpdfguides.com/dref/1296653)

<http://yourpdfguides.com/dref/1296653>