



# Your PDF Guides

You can read the recommendations in the user guide, the technical guide or the installation guide for LA CROSSE TECHNOLOGY WS-2812. You'll find the answers to all your questions on the LA CROSSE TECHNOLOGY WS-2812 in the user manual (information, specifications, safety advice, size, accessories, etc.). Detailed instructions for use are in the User's Guide.

**User manual LA CROSSE TECHNOLOGY WS-2812**  
**User guide LA CROSSE TECHNOLOGY WS-2812**  
**Operating instructions LA CROSSE TECHNOLOGY WS-2812**  
**Instructions for use LA CROSSE TECHNOLOGY WS-2812**  
**Instruction manual LA CROSSE TECHNOLOGY WS-2812**

## Heavy Weather Pro WS2812 Release Notes

Version: 1.5 Date: 10/14/2010

### New Version 1.5 Features

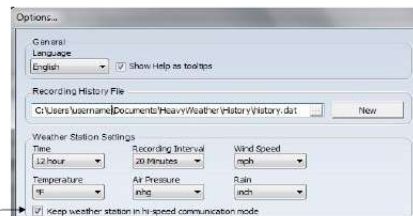
#### Improved Rain Efficiency

The 2812 display and sensor firmware were revised to calculate rain totals a bit differently. Therefore, the software was adjusted to use these changes in the report on the Data tab.

If you used the Version 1.3 software with the 2812, we recommend starting a new history.dat file to ensure all data has the new calculations saved with it.

### Features from Version 1.3 Release

**Hi Speed Communication Mode** instructs the display to maintain high speed mode when Heavy Weather is open as the background application. This feature must be enabled in **Options** (see illustration below). Please be aware that display battery life is consumed at a faster rate when this option is enabled.



### Installation or Upgrade

**Note:** The new software may safely be installed over the previous installation; however, we generally recommend using the menu item to "Uninstall" the previous version before installing the new one.

Download the software and save it to your hard drive in a location you will remember:

- Right click on the .zip file to explode it.
- Double click on setup\_fw\_wv5\_u.exe to initiate installation. Follow instructions on the screen for installation.



[You're reading an excerpt. Click here to read official LA CROSSE TECHNOLOGY WS-2812 user guide](http://yourpdfguides.com/dref/3210621)  
<http://yourpdfguides.com/dref/3210621>

*Manual abstract:*

5 Date: 10/14/2010 New Version 1.5 Features Improved Rain Efficiency The 2812 display and sensor firmware were revised to calculate rain totals a bit differently. Therefore, the software was adjusted to use these changes in the report on the Data tab. @@@@This feature must be enabled in Options (see illustration below). @@@@ Double click on setup\_hw\_wv5\_u.exe to initiate installation. Follow instructions on the screen for installation. .



[You're reading an excerpt. Click here to read official LA CROSSE TECHNOLOGY WS-2812 user guide](http://yourpdfguides.com/dref/3210621)  
<http://yourpdfguides.com/dref/3210621>