



# Your PDF Guides

You can read the recommendations in the user guide, the technical guide or the installation guide for KONICA MINOLTA MAGICOLOR MC2300W. You'll find the answers to all your questions on the KONICA MINOLTA MAGICOLOR MC2300W in the user manual (information, specifications, safety advice, size, accessories, etc.). Detailed instructions for use are in the User's Guide.

**User manual KONICA MINOLTA MAGICOLOR MC2300W**  
**User guide KONICA MINOLTA MAGICOLOR MC2300W**  
**Operating instructions KONICA MINOLTA MAGICOLOR MC2300W**  
**Instructions for use KONICA MINOLTA MAGICOLOR MC2300W**  
**Instruction manual KONICA MINOLTA MAGICOLOR MC2300W**



Konica Minolta Printing Solutions Europe R.V.  
Support Department  
Website: [print.kb.com/minolta.com](http://print.kb.com/minolta.com)

## Updating the MC2300W firmware and driver.

**Information Level:** 4  
(2 = Semi-confidential; Konica Minolta, Internal use only; 3 = Service Partners/Distributors/First Line usage only; 4 = General information, may be sent to end users)

**Printer involved:** Magicolor 2300W  
**Operating system:** all

**Konica Minolta Printing Solutions can not be held liable for damage as result of incorrect firmware updates.**

### Problem Description:

How to update the MC2300W firmware and driver from Minolta QMS to Konica Minolta versions.

### Solution / Work-around / Answer:

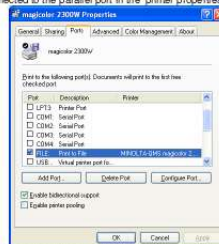
**Upgrading the Magicolor 2300W firmware and driver to Konica Minolta.**

### Close down the status monitor or application.

The status monitor can be closed by right-clicking the status monitor icon on the taskbar, and selecting 'Exit'.

### If the printer is connected via parallel port, change the port settings:

Make sure no printer is connected to the parallel port in the 'printer properties / port' setup.



Temporary change the port for **each printer** (including MC2300W) which was set to 'LPT1' to 'File'. Please make a note of the printers which were set to 'LPT1'. These settings must be restored to their original settings after the firmware has been updated.

Page: 1 of 7



[You're reading an excerpt. Click here to read official KONICA MINOLTA MAGICOLOR MC2300W user guide](http://yourpdfguides.com/dref/2426144)  
<http://yourpdfguides.com/dref/2426144>

**Manual abstract:**

V. @@@@Problem Description: How to update the MC2300W firmware and driver from Minolta QMS to Konica Minolta versions. Solution / Work-around / Answer: Upgrading the Magicolor 2300W firmware and driver to Konica Minolta. Close down the status monitor application. The status monitor can be closed by right-clicking the status monitor icon on the taskbar, and selecting 'Exit'. If the printer is connected via parallel port, change the port settings: Make sure no printer is connected to the parallel port in the 'printer properties / port' setup. Temporary change the port for each printer (including MC2300W) which was set to 'LPT1' to 'File'. Please make a note of the printers which were set to 'LPT1'. These settings must be restored to their original settings after the firmware has been updated. Page 1 of 7 Konica Minolta Printing Solutions Europe B.

V. Support Department Website: [printer.konicaminolta.com](http://printer.konicaminolta.com) Download both the Konica Minolta MC2300W firmware and the update utility. (Fwrite) Unpack both zipped archived files to a folder on your PC.

In the Fwrite folder, doubleclick the Fwrite application icon, the firmware update application will start up with the screen below: Make sure that 'Write Data Flash ROM' is selected and in the 'Output' field, select the port your printer is connected to, (USB or LPT1). Press 'Select'. In the next screen, press 'Browse' to select the location where you saved the firmware file. (\*\*\*\*\*.nal) In the 'Select Data Type' field, make sure 'Firmware' is selected.

When all selections are correct, press 'Execute'. @@@@Your printer firmware has been updated. Please reboot your printer now. @@Checking the current firmware version. Startup the firmware update utility again. @@@@Uninstall your Minolta-QMS Magicolor 2300W printer driver. Select the 'Magicolor 2300W Uninstall' application. @@@@Your PC will restart. @@Cancel this wizard. Do not use the "Add printer wizard" to install the printer, but install the printer driver by running the setup.

exe install application. This setup.exe file is one of the files in the driver folder you downloaded with the driver. Select OK, in the first screen: Page 5 of 7 Konica Minolta Printing Solutions Europe B.V. Support Department Website: [printer.konicaminolta.com](http://printer.konicaminolta.com) Select your printer connection and select OK: (in this example 'local connection') Select the port on which the printer is connected: (in this example LPT1) Select OK in the next screen to keep the default printer name: The new Konica Minolta driver will be installed, after a successful installation, please select OK on the message below: Reboot your PC. On Windows XP, the "New Hardware found" wizard will pop up after rebooting the PC, asking for the Konica Minolta Magicolor 2300W CD. Click OK on the message below: Page 6 of 7 Konica Minolta Printing Solutions Europe B.

V. @@(The folder from where you installed the driver) and select OK. .



**[You're reading an excerpt. Click here to read official KONICA MINOLTA MAGICOLOR MC2300W user guide](http://yourpdfguides.com/dref/2426144)**  
**<http://yourpdfguides.com/dref/2426144>**