



Your PDF Guides

You can read the recommendations in the user guide, the technical guide or the installation guide for KODAK Z980. You'll find the answers to all your questions on the KODAK Z980 in the user manual (information, specifications, safety advice, size, accessories, etc.). Detailed instructions for use are in the User's Guide.

User manual KODAK Z980
User guide KODAK Z980
Operating instructions KODAK Z980
Instructions for use KODAK Z980
Instruction manual KODAK Z980

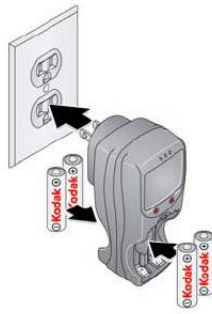
1 Installing the software



Before connecting any cables, install the software that was included with your camera. Follow the on-screen instructions.

After installing the software, return to this user guide.

2 Charging and loading the batteries



Lights are on while the charger is plugged in. (See the charger documentation for instructions and charging times.)

For longer life, charge KODAK Ni-MH Pre-Charged Rechargeable Batteries AA prior to use, and occasionally discharge them to depletion.



See the Extended user guide www.kodak.com/go/z980support

www.kodak.com/go/z980support

1

ENGLISH



[You're reading an excerpt. Click here to read official KODAK Z980 user guide](http://www.kodak.com/go/z980support)

<http://yourpdfguides.com/dref/2430783>

Manual abstract:

Follow the on-screen instructions. After installing the software, return to this user guide. Charging and loading the batteries Lights are on while the charger is plugged in. (See the charger documentation for instructions and charging times.) For longer life, charge KODAK Ni-MH Pre-Charged Rechargeable Batteries AA prior to use, and occasionally discharge them to depletion. See the Extended user guide www.kodak.com/go/z980support www.kodak.com/go/z980support 1 ENGLISH ENGLISH Using an (accessory) SD or SDHC Card Your camera has internal memory.

You can purchase an SD or SDHC Card to store more pictures and videos. (Maximum supported card size is 32 GB.) CAUTION: A card can only be inserted one way; forcing it may cause damage. Inserting or removing a card when the camera is on may damage the pictures, the card, or the camera. 1 Turn off the camera.

2 Insert or remove the card. 3 Turn on the camera. Using charging accessories You can use an accessory KODAK 5-Volt AC Adapter to save battery power.

NOTE: The AC adapter does not charge the batteries. 2 www.kodak.com/go/easysharecenter

Turning on the camera Setting the language and date/time Language: to change. OK to accept. Date/Time: At the prompt, press OK. to change current field. for previous/next field. OK to accept. See the Extended user guide www.kodak.com/go/z980support www.kodak.com/go/z980support

3 ENGLISH ENGLISH 4 Taking a picture 1 Turn the Mode dial to Smart Capture . 2 Press the Shutter button halfway to lock the focus. When the framing marks turn green, press the Shutter button completely down. EVF/LCD button To save battery power, press the EVF/LCD button and use the electronic viewfinder. Framing marks See the Extended user guide www.kodak.com/go/z980support Learn more about Smart Capture and other modes see page 13 www.kodak.com/go/easysharecenter Reviewing pictures/videos Press the Review button to enter/exit Review.

View previous/next picture/video. @@2 Connect the KODAK USB Cable, Model U-8. 3 Turn on the camera. @@It describes every setting for every menu choice. @@2 Press the Info button.

Scroll through a Help topic See the Extended user guide www.kodak.com/go/z980support www.kodak.com/go/z980support 7 ENGLISH ENGLISH Using the vertical grip (for portrait orientation) The vertical grip makes it easier to take pictures in the vertical, portrait orientation.

1 Turn off the camera. 2 Attach and tighten the grip. 3 Turn on the camera. 4 Slide the Portrait switch. 5 Take pictures in the portrait orientation. Use the Portrait Shutter button to take pictures. Use to zoom. Learn more about taking focused pictures see page 4 8 www.kodak.com/go/easysharecenter Attaching the strap 1 2 www.kodak.com/go/easysharecenter

9 ENGLISH ENGLISH 10 Keep learning about your camera! Congratulations! You have: · set up your camera · taken pictures · transferred pictures to your computer Keep learning! Finish reading this book, so you can take and share your best pictures! Visit www.kodak.com/go/z980support:

· the extended user guide · interactive troubleshooting and repairs · interactive tutorials · FAQs · downloads · accessories · printing information · product registration www.kodak.com/go/easysharecenter Back, bottom view 1 2 3 17 16 15 14 13 12 11 10 1 Hot shoe (for optional external flash) 2 Power button 3 On/Off for Portrait mode 4 Shutter button 4 5 6 7 8 9 13 Jog dial 14 Mode dial 15 LCD , OK 16 EVF (Electronic viewfinder)

18 7 5V DC-In/USB/AV out 8 Portrait Shutter button 9 Share button 10 5 Flash/Focus/Drive buttons 11 Delete/Menu/Info/Review 17 EVF/LCD button buttons 6 Strap post (1 of 2) 12 Wide Angle/Telephoto button 18 SD/SDHC Card slot; battery compartment www.kodak.com/go/z980support 11 ENGLISH ENGLISH Front view 1 5 2 2 3 4 1 2 3 4 5 Flash Microphones (2) Speaker Lens Self-timer/Video/AF Assist light 12 www.kodak.com/go/easysharecenter 1 Doing more with your camera Choose the mode that best suits your subjects and surroundings.

Use this mode For Smart Capture General picture taking--it offers excellent image quality and ease of use. Portrait Sport Panorama Full-frame portraits of people. Subjects that are in motion. Shutter speed is fast. "Stitching" 2 or 3 pictures into 1 panoramic scene.

Point-and-shoot simplicity when taking pictures under special conditions. More creative control. (See the Extended user guide at www.kodak.com/go/z980support.)

) SCN P A S M Scene Program Aperture Shutter Manual Video Video with sound. (See page 14.) www.kodak.com/go/z980support 13 Doing more with your camera Taking a video 1 Turn the Mode dial to Video . 2 Press the Shutter button completely down, then release it. To stop recording, press and release the Shutter button again. To review and work with videos, see page 19. Using Scene (SCN) modes Choose a Scene mode--for great pictures in practically any situation. 1 Turn the Mode dial to Scene .

2 Press to display Scene modes. NOTE: If the mode description turns off before you finish reading it, press OK. 3 Press OK to choose a Scene mode. 14 www.kodak.com/go/easysharecenter Doing more with your camera Using the optical zoom 1 Use the LCD or EVF to frame your subject. 2 Press Telephoto (T) to zoom in. Press Wide Angle (W) to zoom out. 3 Take the picture or video. NOTE: To get a focused picture every time, remember: Use the auto focus framing marks, page 4.

As you zoom in, move away from your subject. Optical zoom Digital zoom Using digital zoom To turn on/off digital zoom, see the Setup menu (page 18). Digital zoom is not available in Smart Capture mode. NOTE: You may notice decreased image quality when using digital zoom. @@@@Every time you take a picture, regardless of the lighting conditions.

@@@@@@@For Normal picture taking. Distant scenery, or for taking pictures through a window. Subjects that are 10100 cm (3.939.4 in.) from the lens. @@IMPORTANT: Your camera offers a built-in Help system. To get the most from your camera, see page 7. @@@@@@@@The shortcuts appear. 2 Press to choose Select Photo, Tag, View Thumbnails, or Play Video. . @@@and each begins with a picture. How do you tell yours? @@@@@@work. Camera does not turn on. Camera does not turn off.

Install new batteries (see page 1). Charge rechargeable batteries. Remove the battery, then reinsert or replace it. @@Continue taking pictures. number does not decrease after taking a picture. Stored pictures are corrupted. Retake pictures. @@@@not see a picture (or the expected picture) on the LCD or EVF. www.kodak.com/go/z980support

23 5 Appendix CAUTION: Do not disassemble this product; there are no user-serviceable parts inside. Refer servicing to qualified service personnel. KODAK AC Adapters and Battery Chargers are intended for indoor use only. The use of controls, adjustments, or procedures other than those specified herein may result in exposure to shock and/or electrical or mechanical hazards.



You're reading an excerpt. Click here to read official KODAK Z980 user guide

<http://yourpdfguides.com/dref/2430783>

If the LCD breaks, do not touch the glass or liquid.

Contact Kodak customer support. The use of an accessory that is not recommended by Kodak may cause fire, electric shock, or injury. For approved accessories only obligation. Kodak will not be responsible for any special, consequential or incidental damages resulting from the sale, purchase, or use of this product regardless of the cause. Liability for any special, consequential or incidental damages (including but not limited to loss of revenue or profit, downtime costs, loss of the use of the equipment, cost of substitute equipment, facilities or services, or claims of your customers for such damages resulting from the purchase, use, or failure of the product), regardless of cause or for breach of any written or implied warranty is expressly disclaimed.

Your rights Some states or jurisdictions do not allow exclusion or limitation of incidental or consequential damages, so the above limitation or exclusion may not apply to you. Some states or jurisdictions do not allow limitations on how long an implied warranty lasts, so the above limitation may not apply to you. This warranty gives you specific rights, and you may have other rights which vary from state to state or by jurisdiction. www.kodak.com/go/z980support 25 Appendix Outside the United States and Canada In countries other than the United States and Canada, the terms and conditions of this warranty may be different. Unless a specific Kodak warranty is communicated to the purchaser in writing by a Kodak company, no warranty or liability exists beyond any minimum requirements imposed by law, even though defect, damage, or loss may be by negligence or other act. FCC compliance and advisory KODAK EASYSHARE Z980 Digital Camera This equipment has been tested and found to comply with the limits for a Class B digital device, pursuant to Part 15 of the FCC Rules. These limits are designed to provide reasonable protection against harmful interference in a residential installation. This equipment generates, uses, and can radiate radio frequency energy and, if not installed or used in accordance with the instructions, may cause harmful interference to radio communications.

@@@ Class 1 LED Product (EN 60825-1 and IEC 60825-1) This class is eye-safe under all operating conditions. Canadian DOC statement DOC Class B Compliance--This Class B digital apparatus complies with Canadian ICES-003. Observation des normes Classe B--Cet appareil numérique de la classe B est conforme à la norme NMB-003 du Canada. 26 www.kodak.com/go/easysharecenter Appendix FCC and Industry Canada This device complies with Industry Canada RSS-210 and FCC Rules. Operation is subject to the following two conditions: (1) this device may not cause harmful interference, and (2) this device must accept any interference received, including interference that may cause undesired operation. Waste Electrical and Electronic Equipment labeling In Europe: For human/environmental protection, it is your responsibility to dispose of this equipment and batteries at a collection facility established for this purpose (separate from municipal waste.) For more information, contact your retailer, collection facility, or appropriate local authorities; or visit www.kodak.com/go/recycle.

Product weight: 415 g (14.6 oz) VCCI Class B ITE Australian C-Tick N137 www.kodak.com/go/z980support 27 Appendix Korean Class B ITE China RoHS Eastman Kodak Company Rochester, New York 14650 © Kodak, 2008 Kodak and EasyShare are trademarks of Eastman Kodak Company. 4H5213_en 28 www.kodak.com/go/easysharecenter.



[You're reading an excerpt. Click here to read official KODAK Z980 user guide](http://yourpdfguides.com/dref/2430783)

<http://yourpdfguides.com/dref/2430783>