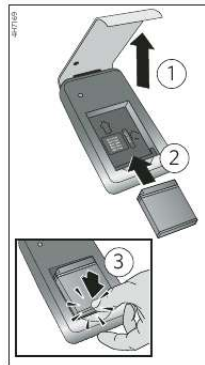




# Your PDF Guides

You can read the recommendations in the user guide, the technical guide or the installation guide for KODAK K7700. You'll find the answers to all your questions on the KODAK K7700 in the user manual (information, specifications, safety advice, size, accessories, etc.). Detailed instructions for use are in the User's Guide.

User manual KODAK K7700  
User guide KODAK K7700  
Operating instructions KODAK K7700  
Instructions for use KODAK K7700  
Instruction manual KODAK K7700



### KODAK Camera Battery Charger K7700

#### Battery Compatibility and Charge Time:

Model Number	Hours
KLK-7000	1
KLK-7001	1
KLK-7003	1,4
KLK-7004	1,25
KLK-7005	1
KLK-7006	1

KODAK Li-Ion Rechargeable Digital Camera Batteries are available from dealers of KODAK products, or go to [www.kodak.com/go/batteries](http://www.kodak.com/go/batteries).

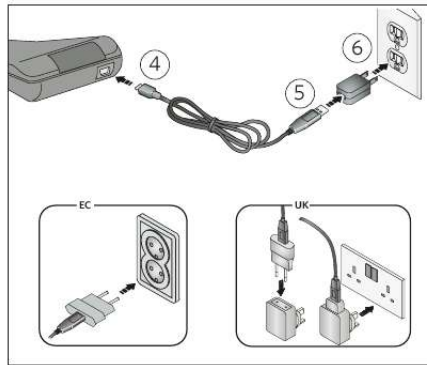
#### LED Indicator:

- Flashing Red**—Charger error; operating temperature exceeded.
- Solid Red**—Battery error; replace battery.
- Flashing Green**—Charging (flashes at a faster speed when close to fully charged).
- Solid Green**—Battery ready to use.

#### Specifications:

Voltage (input):  
KODAK High Performance USB AC Adapter K20-AM: 100V - 240V AC  
Charger: 5V DC

Operating Temperature:  
32° F - 113° F (0° C - 45° C)



#### FCC compliance and advisory

This equipment has been tested and found to comply with the limits for a Class B digital device, pursuant to Part 15 of the FCC Rules. The set limits are designed to provide reasonable protection against harmful interference in a residential installation. This equipment generates, uses, and can radiate radio frequency energy and, if not installed or used in accordance with the instructions, may cause harmful interference to radio communications. However, there is no guarantee that interference will not occur in a particular installation.

If this equipment does cause harmful interference to radio or television reception, which can be determined by turning the equipment off and on, the user is encouraged to try to correct the interference by one or more of the following measures: 1) reorient or relocate the receiving antenna, 2) increase the separation between the equipment and the receiver, 3) connect the equipment to an outlet on a circuit different from that to which the receiver is connected, 4) consult the dealer or an experienced radio/TV technician for additional suggestions.

Any changes or modifications not expressly approved by the party responsible for compliance could void the user's authority to operate the equipment. Where checked interconnect cables have been provided with the product or specified additional components or accessories of software defined to be used with the installation of the product, they must be used in order to ensure compliance with FCC regulation.

The KODAK K20-AM complies with Part 15 of the FCC Rules. Operation is subject to the following two conditions: 1) This device may not cause harmful interference, and 2) this device must accept any interference received, including interference that may cause undesired operation.

#### Canadian DCC statement

**DCC Class B compliance**—This Class B digital apparatus complies with Canadian ICES-003.  
**Observation des normes Class B**—Cet appareil numérique de la classe B est conforme à la norme NMB-003 du Canada.



Go to [www.kodak.com/go/REACH](http://www.kodak.com/go/REACH) for information about the presence of substances included on the candidate list according to article 59(1) of Regulation (EC) No. 1907/2006 (REACH).



Made in China for Eastman Kodak Company  
Rochester, NY 14650 U.S.A.  
©Eastman Kodak Company 2009.  
MC/MB/TM: Kodak.  
[www.kodak.com/go/accessories](http://www.kodak.com/go/accessories)



[You're reading an excerpt. Click here to read official KODAK K7700 user guide](http://yourpdfguides.com/dref/3005195)  
<http://yourpdfguides.com/dref/3005195>

**Manual abstract:**

*This equipment generates, uses, and can radiate radio frequency energy and, if not installed or used in accordance with the instructions, may cause harmful interference to radio communications. However, there is no guarantee that interference will not occur in a particular installation. If this equipment does cause harmful interference to radio or television reception, which can be determined by turning the equipment on and off, the user is encouraged to try to correct the interference by one or more of the following measures: 1) reorient or relocate the receiving antenna; 2) increase the separation between the equipment and the receiver; 3) connect the equipment to an outlet on a circuit different from that to which the receiver is connected; 4) consult the dealer or an experienced radio/TV technician for additional suggestions. @@@@The KODAK Adapter K20-AM complies with Part 15 of the FCC Rules.*

*@@@@@Solid Red--Battery error; replace battery. @@Solid Green--Battery ready to use. Waste Electrical and Electronic Equipment/Battery Disposal In Europe: For human/environmental protection, it is your responsibility to dispose of this equipment and batteries at a collection facility established for this purpose (separate from municipal waste). For more information, contact your retailer, collection facility, or appropriate local authorities; or visit [www.kodak.com/go/recycle](http://www.kodak.com/go/recycle).*

*(Product weight: 81g.) Specifications: Voltage (input): KODAK High Performance USB AC Adapter K20-AM: 100V - 240V AC Charger: 5V DC Operating Temperature: 32° F 113° F (0° C 45° C) Go to [www.kodak.com/go/REACH](http://www.kodak.com/go/REACH) for information about the presence of substances included on the candidate list according to article 59(1) of Regulation (EC) No. @@©Eastman Kodak Company, 2009.*

*MC/MR/TM: Kodak. [www.kodak.com/go/accessories](http://www.kodak.com/go/accessories).*



**[You're reading an excerpt. Click here to read official KODAK K7700 user guide](#)**

**<http://yourpdfguides.com/dref/3005195>**