



Your PDF Guides

You can read the recommendations in the user guide, the technical guide or the installation guide for EPSON LQ-350. You'll find the answers to all your questions on the EPSON LQ-350 in the user manual (information, specifications, safety advice, size, accessories, etc.). Detailed instructions for use are in the User's Guide.

- User manual EPSON LQ-350
- User guide EPSON LQ-350
- Operating instructions EPSON LQ-350
- Instructions for use EPSON LQ-350
- Instruction manual EPSON LQ-350

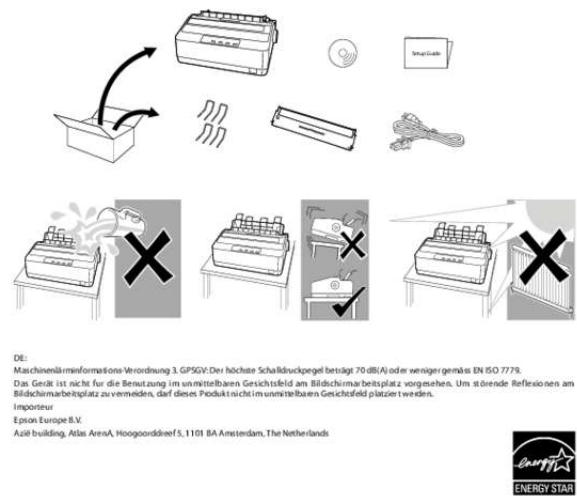
Setup Guide



LQ-350



EN	Setup Guide	For detailed information and safety recommendations, refer to the User's Guide (installed with the software).
DE	Installationshandbuch	Ausführliche Informationen und Sicherheitsempfehlungen finden Sie im Benutzerhandbuch, das mit der Software installiert wurde.
FR	Guide d'installation	Pour plus d'informations et des recommandations concernant la sécurité, reportez-vous au Guide de l'utilisateur (installé avec le logiciel).
IT	Guida di installazione	Per informazioni dettagliate e suggerimenti sulla sicurezza consultate la Guida per l'utente installata con il software.
ES	Guía de instalación	Para obtener información detallada y recomendaciones sobre seguridad consulte la Guía de usuario (instalada con el software).
CA	Manual d'instal·lació	Per obtenir informació detallada i recomanacions sobre seguretat, consulte el Manual de l'usuari (instal·lat amb el software).
PT	Manual de instalação	Para mais informações e recomendações sobre segurança, consulte o Manual do Utilizador (instalado com o software).
NL	Installatiehandleiding	Na afgeef de gebruikshandleiding (geïnstalleerd met de software) voor meer informatie en veiligheidsaanbevelingen.
DA	Installationsvejledning	Der findes yderligere oplysninger og anbefalinger om sikkerhed i bruger vejledningen (installeres sammen med softwaren).
FI	Asennusopas	Lisätietoja ja turvallisuus- ja käyttösuojauksia (asennuksen ohjeistuksen kanssa).
NO	Installationshåndbok	Her du vil finne detaljert informasjon og sikkerhetsanbefalinger, kan du se i brukerhåndboken (som installeres med programvaren).
SV	Installationshandbok	Detaljerad information och säkerhetsföreskrifter finns i Användarhandboken (installeras tillsammans med programmet).
CS	Instalační příručka	Podrobné informace a bezpečnostní doporučení najdete v Uživatelské příručce (instaluje se společně se softwarem).
HU	Üzembe helyezési útmutató	Nácvetési információk és a biztonságos kapcsolatok tudni valók a szoftverrel együtt le telepítéshez és a használat során találhatók.
PL	Podręcznik konfiguracji i instalacji	Szczegółowe informacje oraz zalecenia dotyczące bezpieczeństwa zawiera Podręcznik użytkownika (instalowane wraz z oprogramowaniem).
SK	Instalačná príručka	Podrobné informácie a bezpečnostné odporúčania nájdete v Uživatelskej príručke (instaluje sa spoločne so softwérom).
BG	Руководство за инсталация	Порядок на информация и препоръки за безопасност ще намерите в Руководството за настройка и инсталация (с което се инсталира).
RO	Ghid de instalare	Pentru informații detaliate și recomandări cu privire la siguranță, consultați User's Guide (Ghidul utilizatorului) (instalat cu software-ul).
EE	Seadistjuhend	Lühemat teavet ja ohutusalaadised soovitusi vt koos tarkvaraga installitud kasutusjuhendit User's Guide.
LV	Uzstādīšanas instrukcija	Sīkākā informācija un ieteikumi par drošību skat. Lietotāja rokasgrāmatā (tiek instalēta kopā ar programmu).
LT	Parąngties vadovas	Detaliosis informacijos ir saugos patarimų leidinys vartotojų vadove (įdiegtame kartu su programine įranga).
EL	Οδηγός εγκατάστασης	Για περισσότερες πληροφορίες και ασφαλιστικές προτάσεις, ανατρέξτε στον Οδηγό χρήσης (εγκαθίσταται μαζί με το λογισμικό).
TR	Kurulum kılavuzu	Ayrıntılı bilgi ve güvenlik önerileri için (tarihi / yazarı ve yüklemeli olan) Kullanıcı Kılavuzu'na bakın.
SL	Priročnik za namestitve	Podrobnejše informacije in varnostna priporočila najdete v uporabniškem priročniku (namestitve skupaj s programsko opremo).
HR	Vodč za postavu	Detaljne informacije i preporuke o sigurnosti pogledajte u Korisničkem priručniku (instaliran zajedno sa softwérom).
MK	Упутство за поставување	За подетални информации и препоруки за безбедност видете во "Корисничкиот приручник" (што се инсталира заедно со софтверот).
SR	Упутство за постављање	За детаљне информације и мере безбедности погледајте Корисничко упутство (instalirano заједно са softwérom).
RU	Руководство по установке	Для получения подробной информации и рекомендаций по безопасности см. Руководство по установке (устанавливается вместе с программным обеспечением).
AR	دليل الإصدار	تتمثل المعلومات التفصيلية والتوصيات المتعلقة بالسلامة في دليل المستخدم (الذي يتم تثبيته مع البرنامج).
FA	راهنمای تنظیم	برای اطلاعات دقیق‌تر و توصیه‌های ایمنی، به راهنمای کاربر مراجعه کنید (که همراه با نرم‌افزار نصب می‌شود).



No part of this publication may be reproduced, stored in a retrieval system, or transmitted in any form or by any means, electronic, mechanical, photocopying, recording, or otherwise, without the prior written permission of Seiko Epson Corporation. No patent liability is assumed with respect to use of the information contained herein.
Neither Seiko Epson Corporation nor its affiliates shall be liable to the purchaser of this product or third parties for damages, losses, costs, or expenses incurred by the purchaser or third parties as a result of: accident, misuse, or abuse of this product or unauthorized modifications, repairs, or alterations to this product, or (excluding the U.S.) failure to strictly comply with Seiko Epson Corporation's operating and maintenance instructions. Seiko Epson Corporation and its affiliates shall not be liable against any damages or problems arising from the use of any printer or any consumable product other than those designated as Original Epson Products or Epson Approved Products by Seiko Epson Corporation.
EPSON and EXCEED YOUR VISION are registered trademarks of Seiko Epson Corporation.
Microsoft, Windows, and Windows Vista are registered trademarks of Microsoft Corporation in the United States and/or other countries.
General Notice: Other product names used herein are for identification purposes only and may be trademarks of their respective owners.
Epson disclaims any and all rights in those marks.
The contents of this manual are subject to change without notice.
Copyright © 2012 Seiko Epson Corporation. All rights reserved.
Printed in XXXXX



You're reading an excerpt. Click here to read official EPSON LQ-350 user guide
<http://yourpdfguides.com/dref/5425774>

Manual abstract:

@@@Microsoft®, Windows®, and Windows Vista® are registered trademarks of Microsoft Corporation in the United States and/or other countries. ©Epson disclaims any and all rights in those marks. The contents of this manual are subject to change without notice. .



[You're reading an excerpt. Click here to read official EPSON LQ-350 user guide](http://yourpdfguides.com/dref/5425774)

<http://yourpdfguides.com/dref/5425774>