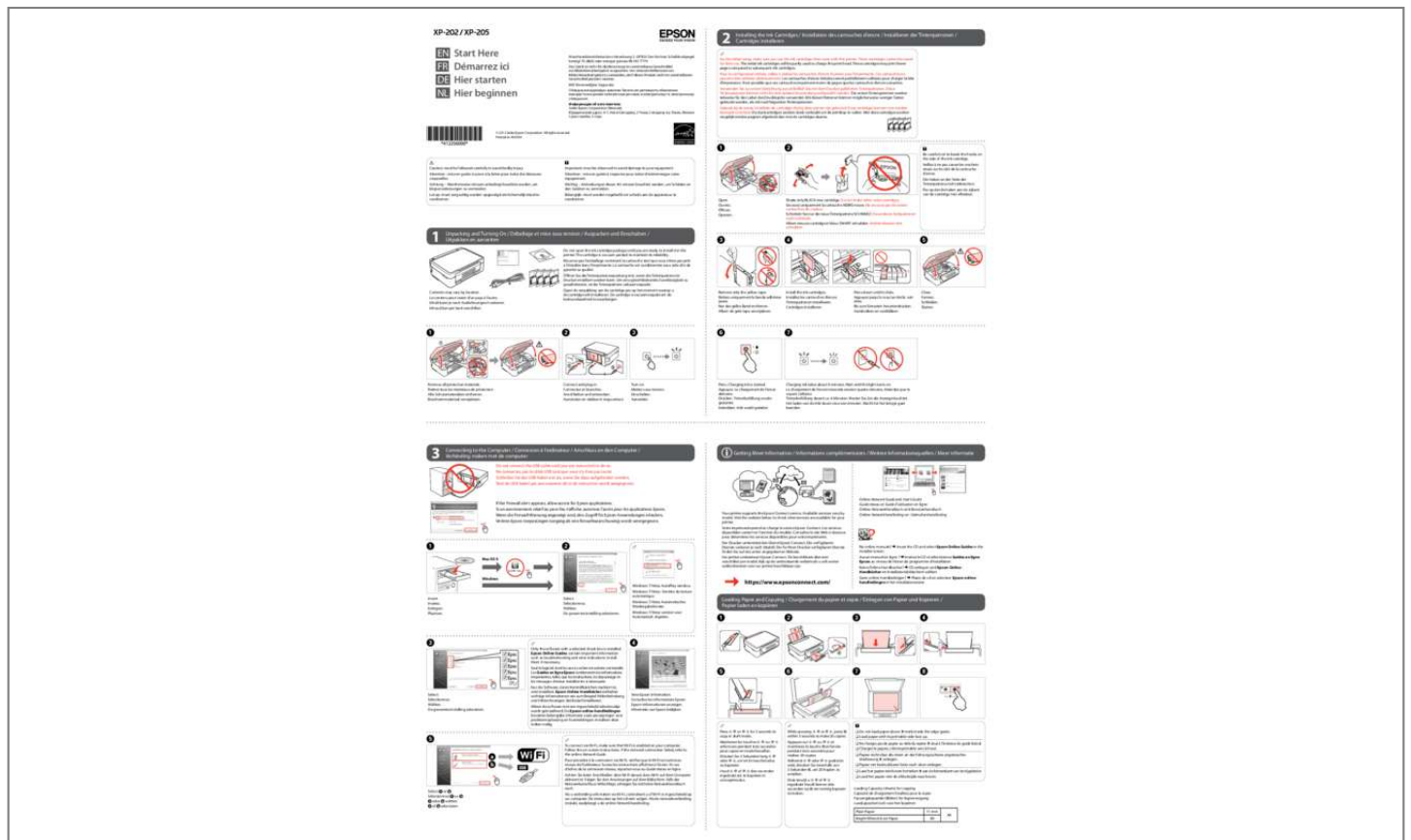




# Your PDF Guides

You can read the recommendations in the user guide, the technical guide or the installation guide for EPSON EXPRESSION HOME XP-202. You'll find the answers to all your questions on the EPSON EXPRESSION HOME XP-202 in the user manual (information, specifications, safety advice, size, accessories, etc.). Detailed instructions for use are in the User's Guide.

User manual EPSON EXPRESSION HOME XP-202  
User guide EPSON EXPRESSION HOME XP-202  
Operating instructions EPSON EXPRESSION HOME XP-202  
Instructions for use EPSON EXPRESSION HOME XP-202  
Instruction manual EPSON EXPRESSION HOME XP-202



[You're reading an excerpt. Click here to read official EPSON EXPRESSION HOME XP-202 user guide](http://yourpdfguides.com/dref/5198873)  
<http://yourpdfguides.com/dref/5198873>

**Manual abstract:**

*These cartridges cannot be saved for later use. @@These cartridges may print fewer pages compared to subsequent ink cartridges. Caution; must be followed carefully to avoid bodily injury. @@C Important; must be observed to avoid damage to your equipment. 1 Shake only BLACK new cartridge. Do not shake other color cartridges. @@The cartridge is vacuum packed to maintain its reliability. Wait until the light turns on. 3 Connecting to the Computer / Connexion à l'ordinateur / Anschluss an den Computer / Verbinden maken met de computer Do not connect the USB cable until you are instructed to do so. % Getting More Information / Informations complémentaires / Weitere Informationsquellen / Meer informatie If the Firewall alert appears, allow access for Epson applications.*

*Visit the website below to check what services are available for your printer. & Insert the CD and select Epson Online Guides in the installer screen. @@Q Press x r or r x for 3 seconds to copy in draft mode. @@C O Do not load paper above H mark inside the edge guide. @@ follow the on-screen instructions. If the network connection failed, refer to the online Network Guide. @@No paper is loaded, or multiple sheets were fed at the same time. Load paper in the sheet feeder correctly and press x r or r x. Ink cartridge(s) are running low on ink. printing is still possible.*

*Prepare new ink cartridge(s) or replace the cartridge(s). Only remove the cartridge when you are ready to replace it. Ink cartridge(s) with a low ink level cannot be used even if they are reinserted into the printer. To replace ink cartridge(s) that are running low, open the scanner unit and press y for 6 seconds until the print head moves. Next, follow the steps from step C in "Replacing Ink Cartridges". Ink cartridge(s) are expended, not installed correctly, or invalid. @@Otherwise the ink remaining in the print head nozzles may dry out. Turn the printer off and then back on. @@@@ contact Epson Support to replace ink pads. @@An error occurred while establishing the Wi-Fi connection.*

*Press to clear the error and try again. For more details, see the online Network Guide. You will need to re-attempt the firmware update. @@@@Establishes a Wi-Fi connection when pressed for 3 seconds. @@@@To replace cartridge(s) that are not expended, open the scanner unit and press y for 6 seconds until the print head moves. Then, follow the steps from step E in the "Replacing Ink Cartridges" section. @@@@B C Use only the power cord that comes with the printer. Use of another cord may cause fire or shock. Do not use the cord with any other equipment. @@Use only the type of power source indicated on the printer.*

*Make sure the power cord meets all relevant local safety standards. Do not let the power cord become damaged or frayed. Shake only BLACK new cartridge. Do not shake other color cartridges. F G H Keep the printer away from direct sunlight or strong light.*

*Do not open the scanner unit while copying, printing, or scanning. Do not use aerosol products that contain flammable gases inside or around the printer. Doing so may cause fire. Except as specifically explained in your documentation, do not attempt to service the printer yourself. Keep ink cartridges out of the reach of children.*

*I J K Do not shake the ink cartridges too vigorously; otherwise ink may leak from the cartridge. @@Do not touch the ink supply port or surrounding area. Wait until the light turns on. @@If ink gets into your eyes, flush them immediately with water. @@If ink gets into your mouth, spit it out immediately and see a doctor right away. .*



[You're reading an excerpt. Click here to read official EPSON  
EXPRESSION HOME XP-202 user guide  
http://yourpdfguides.com/dref/5198873](http://yourpdfguides.com/dref/5198873)