

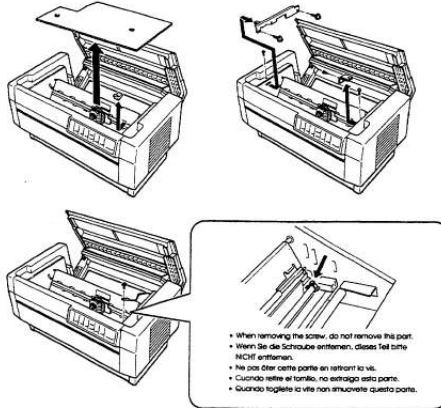


Your PDF Guides

You can read the recommendations in the user guide, the technical guide or the installation guide for EPSON DFX-8000. You'll find the answers to all your questions on the EPSON DFX-8000 in the user manual (information, specifications, safety advice, size, accessories, etc.). Detailed instructions for use are in the User's Guide.

User manual EPSON DFX-8000
User guide EPSON DFX-8000
Operating instructions EPSON DFX-8000
Instructions for use EPSON DFX-8000
Instruction manual EPSON DFX-8000

NOTICE



NOTE:
To prevent damage during shipping, several pieces of protective material are packed with your printer. You must remove these before you assemble your printer.

HINWEIS:
Zur Vermeidung von Transportschäden wurde der Drucker durch schützende Verpackungsteile gesichert. Diese Teile müssen vor dem Zusammenbau des Druckers entfernt werden.

ATTENTION:
Afin d'éviter tout dommage durant le transport, des matériaux de protection ont été emballés avec l'imprimante. Veillez à bien les retirer avant de l'assembler.

NOTA:
L'imballaggio della vostra stampante contiene molti elementi protettivi, per prevenire danni durante il trasporto. Non dimenticate di toglierli prima di iniziare a utilizzare la stampante.

NOTA:
Para evitar daños durante el transporte, su impresora viene protegida por varias piezas de material protector. Debe retirar estas piezas antes de montar su impresora.

Please also read the back of this sheet.
Lesen Sie bitte auch die Rückseite dieses Hinweisblattes.
Lire attentivement le recto de cette feuille.

Por favor, lea también el dorso de esta hoja.
Leggere anche il retro di questo foglio.

Copyright © 1993 by Seiko Epson Corporation, Nagano, Japan

699429
021-00



[You're reading an excerpt. Click here to read official EPSON DFX-8000 user guide](http://yourpdfguides.com/dref/562372)
<http://yourpdfguides.com/dref/562372>

Manual abstract:

@@@w, .wtorodioc~ca&uu. @@Reorient or relocate the receiving antenna. . Increase the separation between the quipment and receiver. . Connect the quipment into an outlet on a circuit different from that to which the receiver is connected. . Consult the dealer or an experienced radio/TV technician for help.

WARNING The connection of a non-shielded printer interface cable to this printer will invalidate the FCC Certification of this device and may cause interfenmce levels which exceed the limits establiied by the FCC for this quipment.

If this quipment has more than one interface connector, do not leave cables connected to unused interfaces. Seiko Epson Corporation shall not be liable against any damages or problems arisii from the use of any options or any consumable products other than those designated as Orignal Epson Products or Epson Approved Products by Seiko Epson Corporation. All rights reserved. No part of this publication may be reproduced, stored in a retrieval system, or transmitted, in any form or by any means, mechanical, photocopying, recording, or otherwise, without the prior written permission of Epson America, Inc. No patent liability is assumed with respect to the use of the information contained herein.

While every precaution has been taken in the preparation of this book, Epson America, Inc. assumes no responsibility for errors or omissions. Neither is any liability assumed for damages resultiq from the use of the information contained herein. **FOR CANADIAN USERS** This digital apparatus does not exceed the Class B limits for radio noise emissions from digital apparatus as set out in the radio interference regulations of the Canadian Department of Communications. Le pr4sent appareil num6rique n&et pas de bruits radioelectriques depassant les limites applicables aux appareils nun&iques de Classe B prescrites darts le r4glement sur le brouillage radidlectrique' 6dicte par le Minis&e des Communications du Canada.

Epson and Epson ESC/P are registered trademarks of Seiko Epson Corporation. IBM is a registered trademark of International Business Machines Corporation. Graphics created with UniPaint by Unison World Inc. and Epson JD-Graph. Copyright 0 1989 by Epson America Inc. Torrance, California **I**WORTANT SAFETY INSTRUCTIONS 1. Readall of these instructions and save them for later reference. 2. Follow all warnings and instructions marked on the product. 3.

Unphrg this product from the wall outlet before cleaning. Do not use liquid cleaners or aerosol cleaners. Use a damp cloth for cleaning. 4. Do not use this product near water. 5. Do not pbce this product on an unstable cart, stand, or table. The product may fall, causing serious damage to the product. 6. Slots and openings in the cabinet and the back or bottom are provid&d for ventilation; to ensure reliable operation of the product and to protect it from overheating, these openings must not be blocked or covered.

The openings should never be blocked by placing the product .on-a bed, sofa, rug, or other similar surface. This product should never be placed near or over a radiator or heat register. This\$rdduct'should not be placed in a built-in instAlation unless proper ventilation is provided. 7.

This product should be operated from the type of power source indicated on the marking label. If you are not sure of the type of power available, consult your dealer or local power company. 8. This product is equipped with a &wire grounding-type plug, a plug having a third (grounding) pm. This plug will only fit into a grounding-type power outlet.

This is a safety feature. If you are unable to insert the plug into the outlet, contact your electrician to replace your obsolete outlet. Do not defeat the purpose of the grounding-type phrg. 9. Do not locate this product where the cord will be walked on. iii 10. If an extension cord'is used with & product, make sure that the total of the ampere ratings on the products piugged into the extension cord does not exceed'the extension cord ampere rating. Also, make sure that the total .of all products plugged into the wall outlet does not exceed 15 amperes. 11.

Never puih objects of any kind into this product through cabinet slots as they may touch dangerous voltage points or short out parts that could result in a risk of fire or electric shock. Never spill liquid of any kind on the product. 12. Except as specifically explained in the User's Manual, do not attempt to service this product yourself. Opening or removing those covers that are marked "Do Not Remove" may expose you to : dangerous voltage points or other risks. Refer all servicing ,in those compartments to service personnel. 13. Unplug this product from the wall outlet and refer servicing to qualified service personnel under the following conditions: A. When the power cord or ~1% is damaged or frayed. B.

If liquid has been spilled into the product. C. If the product has been exposed to rain or water. D. If the product.

does not operate normally when the operating instructions are followed. Adjust only those controls that are covered by the operating instructions since improper adjustment of other controls may result in damage and will often require extensive work by a qualified technician to restore the product to normal operation. E. If the product has been dropped or the cabinet has been damaged. F.

If the product exhibits a distinct change in performance, indicating a need for service. iv Contents About This Manual Introduction Chapter 1 Setting Up the Printer 1 3 1-1 Unpacking the Printer

.....
.....
.....
.....

..... Choosing a Place for the Printer .

.....
.....
.....

... Assembling the Printer ..

.....
.....
.....
.....

Testing the Printer

.....
.....
.....

.....
.....
.....

.. Connecting the Printer to Your Computer

.....
.....
.....

... Setting Up Your Application Software ..

..... Chapter 2 Paper Handling 1-2 1-7 1-9 1-13 1-26 1-36 2-1 2-2 Using the Two-Tractor System .

.....
.....
.....

.....
.....

Switching between Front and Rear Tractors

.....

.... Changing the Paper

.....
.....
.....

.....
.....
.....

..... Printing on Special Paper

.....
.....
.....
.....

..... Chapter 3 Using the Printer 2-20 2-24 2-29 3-1 3-2 3-7 3-17 3-18 3-20 3-33 3-37 3-40 3-43 Operating the Control Panel ..

.....
.....
.....

.....
.....

.. Setting the DIP Switches ...

.....
.....
.....
.....

. Page Length

.....
.....
.....
.....
.....

.. Skip Over Perforation

.....

.....
.....
.....

6-9 Chapter 7 Troubleshooting Problems and Solutions

.....
.....
.....

.....
.....

. Power Supply

.....
.....
.....
.....

.... Printing .

.....
.....
.....
.....
.....

.....
.....
.....

. Paper Handling

.....
.....
.....
.....

.....
.....

.. Options ...

.....
.....
.....
.....

.....
.....
.....

.... Chapter 8 Technical Specifications 7-1 7-2 7-3 7-4 7-13 7-18 8-1 Printer Specifications

.....
.....
.....
.....

... 8-2 Interface Specifications ..

.....
.....
.....
.....

.....
8-11 Initialization
.....
.....
.....
.....
.....
.....

. 8-17 vi Contents Chapter 9 Command Summary Using the Command Summary .



[You're reading an excerpt. Click here to read official EPSON
DFX-8000 user guide
http://yourpdfguides.com/dref/562372](http://yourpdfguides.com/dref/562372)

Your printer may also be protected by several pieces of foam packaging. These protective items must be removed before you turn on the printer. After removing the protective materials as described below, store them with the other packaging material. 1. Open the top cover by lifting its front edge up and away from you. Remove any packing materials in the printer. 1-4 Setting Up the Printer Unpacking the Printer 2. Use the enclosed cross-head screwdriver to remove the five screws and the two transport locking brackets from the inside of the printer. 3.

Remove the print head protector, as shown below. Then lift up it, the paper bail and remove the piece of foam packing underneath Setting Up the Printer 1-5 Unpacking the Printer 4. Using the enclosed cross-head screwdriver, remove the carriage guide support bar. WARNING: Be sure to remove all protective materials before you turn on the printer.

1-6 Setting Up the Printer Choosing a Place for the Printer When you select a location for your printer, keep the following in mind: 1 1 Place the printer on a flat, stable surface. Place the printer close enough to the computer for the printer cable to reach. Leave plenty of room around the printer for your front and rear stacks of continuous paper as well as your printed output. Use a grounded outlet; do not use an adapter plug. WARNING: Avoid locations that are subject to direct 1 1 sunlight, excessive heat, moisture, or dust.

Avoid using electrical outlets that are controlled by wall switches or automatic timers. Accidental interruption of power can wipe out information in your computer's and your printer's memory. Avoid using outlets on the same circuit with large motors or electrical appliances that might cause fluctuations in line voltage. Keep the entire computer system away from potential sources of electromagnetic interference; such as loudspeakers or the base units of cordless telephones. Setting Up the Printer 1-7 Choosing a Place for the Printer The illustration below shows a good printer location. Notes: If you plan to use a printer stand, follow these guidelines to select and set up the stand: The stand should be able to support at least 128 lbs. (58 kg), which is twice the weight of the DFX-8000 printer. Never use a stand that supports the printer at an angle. The printer should always be kept level. If you keep your paper supply underneath the printer stand, be sure there is enough clearance to prevent the paper from catching on the underside of the stand.

Also, check to see that the distance between the stand supports is wide enough to accommodate the paper you will be using.



[You're reading an excerpt. Click here to read official EPSON](#)

[DFX-8000 user guide](#)

<http://yourpdfguides.com/dref/562372>

Position your printer's power cable and interface cable so that they do not interfere with paper feeding. If possible, fasten the cables to the printer stand to keep them away from the paper. 1-8 Setting Up the Printer Assembling the Printer After you've decided on the best place to set up your printer, you need to install the ribbon cartridge. Installing the ribbon cartridge Before installing the ribbon cartridge, make sure that the printer is not plugged into an electrical outlet. Remove the ribbon cartridge from its box and plastic wrapper and then follow these steps to install the ribbon cartridge: 1. Open the top cover by lifting its front edge up and away from you. Setting Up the Printer 1-9 Assembling the Printer 2. Slide the print head to the exposed part of the paper bail as shown below.

3. Remove the separator from the middle of the ribbon cartridge . and discard it. Then detach the ribbon guide from the ribbon cartridge (but not from the ribbon) and turn the ribbontightening knob in the direction of the arrow to take up any slack in the ribbon. 1-10 setting Up the Printer Assembling the Printer 4.

Hold the ribbon cartridge with both hands and lower it into the printer. Pulling the cartridge toward you, slide the hooks in the sides of the cartridge over the two corresponding pins in the printer. Then push the cartridge down into position until the other two hooks snap into place over the mounting pins in the Note: Press lightly on both sides of the cartridge to make sure the hooks are properly connected. 5. Insert the ribbon guide over the metal pins on each side of the .

print head. The smaller end of the guide should be on top, with its angled edge toward the platen. Turn the ribbon-tightening knob again to remove any slack in the ribbon. Setting Up the Printer 1-11 Assembling the Printer 6. Slide the print head from side to side to make sure that it moves smoothly and that the ribbon is not twisted or creased. 7. Close the top cover. 1-12 Setting Up the Printer Testing the Printer Now that your printer is fully assembled, you can use its built-in self test function to be sure the printer is working correctly before you connect it to a computer. You should perform this test to make sure that your printer was not damaged during shipping and that the ribbon is correctly installed. Before performing the self test, you need to plug in your printer and load paper.

Plugging in the printer 1. Make sure that the printer is turned off. 2. Check the label on the printer's back panel to make sure the voltage required by the printer matches that of your electrical outlet. Setting Up the Printer 1-13 Testing the Printer WARNING: If the rated voltage and your outlet voltage r!!!b do not match, contact your Epson dealer. Do not plug in the power cable. 3. If necessary, connect the power cable to the AC inlet on the printer's rear panel. 4. Plug the power cable into a properly grounded electrical outlet.

!!9 1-14 WARNING: Whenever you turn off the power, wait at least five seconds before turning it back on. Rapidly switching the power on and off can damage the printer. Setting Up the Printer Testing the Printer Running the self test The self test can be run in draft or Near Letter Quality (NLQ) mode, depending on which button you hold down as you turn on the printer. 1. Be sure the printer is turned off.

2. . Open the front cover by lifting its bottom edge up and toward you. Setting Up the Printer 1-15 Testing the Printer left 3. Release the sprocket lock levers on both the right and sprocket units by pulling each lever down.

4. Slide the left sprocket unit all the way to the left. Lock it in . place by pushing the sprocket lock lever up. 1-16 Setting Up the Printer Testing the Printer 5. Now slide the right sprocket unit to approximately match the width of your paper. (Do not lock it in place yet.) 6. Slide the two paper supports so that they are spaced evenly . between the two sprocket units.

Setting Up the Printer 1-17 Testing the Printer 7. Open both sprocket covers. 8. Be sure your paper has a clean, straight edge, and then fit the . first four holes in the paper over the pins of both sprocket units. Then close the sprocket covers. (The side of the paper that you want to print on should be facing you.) 1-18 Setting Up the Printer Testing the Printer 9. Slide the right sprocket unit so that the paper is straight and has . no wrinkles.

Lock the sprocket unit in place by pushing the sprocket lock lever up. CAUTION: Be sure the sprocket units are not too far apart. l a- If they pull your paper too tightly or if they tear the ed& o f the paper holes, a paper jam may result. To remove any excess tension in your paper, release the right sprocket once and lock it again. 10.

Close the front cover. Setting Up the Printer 1-19 Testing the Printer WARNING: Before turning on the printer, be absolutely sure you have removed all protective materials. Turning on the printer while the print head cannot move may seriously damage the mechanism. 11. While holding d o w n the L I N E FEED button (for draft mode) or the FORM FEED button (for NLQ mode), turn on the printer.

The POWERa dPAPER OUT lights come on. Also, either the front or n rear tractor arrow o n the PAPER SELECT indicate lights up. Notes: l When NLQ mode is selected using DIP switch l-5, the self test runs in the NLQ mode even if you press the LINE FEED button. l If you open the top cover while the DFX is printing, the printer beeps four times, goes off line, and stops printing. To resume printing, close the top cover and press the ON LINE button. 1-20 setting up the Printer Testing the Printer 12. Press the LINE FEED/LOAD button to load your paper. (If the paper does not load, the front tractor may not be selected. Press the FRONT/REAR button to select the front tractor. This loads the paper automatically.

) 13. Press the ON LINE button to start the self test. (The ON LINE light does not go on.) A list of your printer's DIP switch settings is printed first, followed by a series of characters. The self test continues until the paper runs out or you press the ON LINE button. 14. If the test results are satisfactory and you wish to stop the test, press the ON LINE button. If the test results are not satisfactory, see page l-24 for possible causes and solutions. Note: To resume the test, press the ON LINE button again. Setting Up the Printer 1-21 Testing the Printer 15.

Press the FORM FEED button to advance the paper. Then open the paper separator cover (the back flap of the top cover) and tear off the paper at the perforation. 16. Turn off the printer. e WARNING: Whenever you turn off the power, wait at least five seconds before turning it back on. Rapidly switching the Power on and off. can damage the printer. 1-22 Setting Up the Printer Testing the Printer Here are parts of typical self test printouts: High-speed draft mode Uw~~~ar::tc~r pi.



[You're reading an excerpt. Click here to read official EPSON](#)

[DFX-8000 user guide](#)

<http://yourpdfguides.com/dref/562372>

tc:h S h a p e a 9 z e I " 0 t a b l e (#OH-OFFH) l4wvnl Nat. slashed T.

nl.c ESC/F mode cs W1. ZW1. GWL- Normal draft mode Character pitch Normal Shal:)e of zern Not slashed CG table (SOH-OFFH) Italic ESC/F m o d e SWI* SWI* SWI* SWI* rox+,- ./0123456789: ; &~?IABCDEFGHIJKLMNOp[O#+,- ./0123456789r;<=>?CDEFGHIJKLMNOPof (If+,- ./0123456789: ;~<=>?@ABCWEGiIJKLMNOFQR~ Note: Your printer's default setting is high-speed draft mode. If you want to run the self test in normal draft mode, you need to select normal draft mode using DIP Switch2-2. See the section on setting DIP switches in Chapter 3 for instructions. Setting Up the Printer 1-23 Testing the Printer NLQ mode character D i t c h Normal Not slashed Solving any self test problems If the self test does not print properly, check the list of possible problems and solutions below.

Also be sure there are no packing materials remaining inside the printer. The paper is jammed. Turn off the printer, remove the jammed paper, and then load fresh paper. See page 1-15. The printer does not print. The printer sounds like it is printing, but nothing is printed. The ribbon cartridge may not be installed properly. Turn off the printer and remove the ribbon cartridge. Then reinstall it and take up any slack in the ribbon. See page 1-9 The ribbon may be worn out.

Replace the ribbon cartridge. See page 6-4. The test did not print when you pressed the ON LINE button. Turn off the printer and follow the steps under Running the Self Test again. Be sure to hold down the FORM FEED or LINE FEED button longer while you turn on the printer. See page 1-20 1-24 Setting Up the Printer Testing the Printer Problem The printout is faint or uneven. Solution The printout is faint. The ribbon may be worn out. A worn ribbon can damage the print head and should be replaced. Install a new ribbon cartridge as soon as possible.

See page 6-4. There is either too much slack in the ribbon or the ribbon is caught on something. Stop printing, turn off the printer, and reinstall the ribbon cartridge. See page 1-9. The ribbon cartridge may not be installed properly. Turn off the printer, remove the ribbon cartridge, and then reinstall it. Make sure the cartridge hooks are inserted securely into the printer. See page 1-11. The print head is damaged. Stop printing and contact your Epson dealer to have the print head replaced.

Parts of printed characters are missing, as shown here: ABCD The bottom parts of printed characters are missing as shown here: ABCD A blank line runs through your characters, as shown here: If the printer still does not print the self test correctly, contact your Epson dealer. Setting Up the Printer 1-25 Connecting the Printer to Your Computer If the self test printed correctly, you are now ready to connect your printer to the computer. Your DFX printer has two separate interface connections: a parallel interface and an RS-232C compatible serial interface. If you are not sure which one is required by your computer, check your computer manual. parallel interface serial interface If you have a suitable shielded cable, you should be able to connect the printer to most computers immediately. If your computer requires another type of interface, you need to use an optional interface board. See the section on interface boards in Chapter 5. The parallel interface is the printer's default setting. If you need to use the built-in serial interface, be sure to change the DIP switch settings as shown in Chapter 3. 1-26 Setting Up the Printer Connecting the Printer to Your Computer The parallel interface Follow these steps to connect the parallel interface cable to the printer: 1.

Turn off both the printer and computer. 2. Open the rear cover by grasping it by the handholds on each side and pulling it out and down. Setting Up the Printer 1-27 Connecting the Printer to Your Computer 3. Plug the cable connector securely into the parallel interface (the socket on the left). WARNING: Do not plug more than one interface cable into the printer at one time. This may damage the printer. 4. Squeeze the wire clips together until they lock in place on either side of the connector. 1-28 Setting Up the Printer Connecting the Printer to Your Computer 5.

If your cable has a ground wire, connect it to the Pnter s ground connector. 6. Open the plastic clamp to the right of the parallel and serial interfaces by pressing down on its top tab. Insert the cable in the plastic clamp and close the clamp. Setting Up the Printer 1-29 Connecting the Printer to Your Computer 7. Close the rear cover. CAUTION: Always close the rear cover before using the printer. 8. Plug the other end of the cable into the computer. (If there is a ground wire at the computer end of the cable, attach it to the ground connector at the back of the computer.

) 1-30 Setting Up the Printer Connecting the Printer to Your Computer The serial interface Follow these steps to connect the serial interface cable to the printer: 1. Turn off both the printer and computer. 2. Open the rear cover by grasping it by the handholds on each . side and pulling it out and down. Setting Up the Printer 1-31 Connecting the Printer to Your Computer 3. Plug the cable connector securely into the serial interface (the . socket on the right).

WARNING: Do not plug more than one interface cable into the printer at one time. This may damage the printer. 4. If your cable connector has screws that you need to tighten using a screwdriver, open the top cover of the printer. 1-32 Setting Up the Printer Connecting the Printer to Your Computer 5. Insert a screwdriver through the hole in the rear paper guide and fasten the screws of the cable connector. Note: If the screws that come with the cable do not fit into the connector lock nuts on the interface, replace the lock nuts with the optional lock nuts provided with the printer. 6. Close the top cover. Setting Up the Printer 1-33 Connecting the Printer to Your Computer 7. If your cable has a ground wire, connect it to the printer's ground connector. 8.

Open the plastic clamp to the right of the parallel and serial interfaces by pressing down on its top tab. Insert the cable in the plastic clamp and close the clamp. 1-34 Setting Up the Printer Connecting the Printer to Your Computer 9. Close the rear cover. CAUTION: Always close the rear cover before using the printer. 10. Plug the other end of the cable into the computer. (If there is a ground wire at the computer end of the cable, attach it to the ground connector at the back of the computer.) Setting Up the Printer 1-35 Setting Up Your Application Software Now that you have set up and tested the DFX-8000, you can start using it with your application software programs. Most software programs let you specify the type of printer you are using so that the program can take full advantage of the printer's features.



[You're reading an excerpt. Click here to read official EPSON DFX-8000 user guide](http://yourpdfguides.com/dref/562372)
<http://yourpdfguides.com/dref/562372>

If your application program has an installation or setup procedure that lets you select your printer from a list of printers, choose the Epson DFX-8000 printer. If the list does not include the DFX-8000, choose one of the following' printers, listed in order of preference: DFX-5000 FX-1050 (FX-850) FX-286e (FX-86e) Ex-1000 (EX-800) FX-185 (FX-85) FX-100+ (FX-80+) FX-100 (FX-80) If these printers are not listed, select one of the following printers, listed in order of preference: FX EX LX RX MX Epson printer 9-pin printer Standard printer Draft printer 1-36 Setting Up the Printer Setting Up Your Application Software If you plan to use IBM emulation mode, select one of the following printers, listed in order of preference: IBM Proprinter XL IBM Graphics printer IBM Printer Note: To use all the features of the DFX-8000, it is best to use a program with the DFX-8000 on its menu. If your software program does not list the DFX-8000, contact the software manufacturer to see if an update is available. Setting Up the Printer 1-37 Paper Handling Using the Two-Tractor System

.....
.....
.....
.....

..... Positioning the paper supply .

.....
.....
.....

.....
.....

Loading paper onto the front tractor

.....

Loading paper onto the rear tractor

.....
.....

..... 2-2 2-2 2-4 2-11 Switching between Front and Rear Tractors ...

.....
.....

..... 2-20 Changing the paper

.....
.....
.....
.....

.....
.....

. 2-24 Printing on Special Paper

.....

.....
.....

..... Copy mode .

.....
.....
.....
.....

..... Multi-part forms ..

.....
.....
.....
.....

.....
.....

Labels

.....
.....
.....
.....
.....
.....
.....

..... s 2-29 2-29 2-30 2-32 Paper Handling 2-1 Using the Two-Tractor System The DFX-8000's paper handling system consists of a front and a rear push tractor. Both tractors are easy to load and operate, and both accommodate a wide variety of paper types, including labels and multi-part forms. The printer automatically adjusts to the thickness of your loaded paper, so you don't need to set the paper thickness manually. You can use any width continuous paper, from 4 inches (101 mm) to 16 inches (406 mm) wide.

Your printer also senses the paper width automatically. If you plan to use more than two types of paper, it is best to load the paper you use most often onto the rear tractor. That way you can use the front tractor, which is easier to reach, for paper you change more often. Positioning the paper supply Since the DFX-8000 can be loaded with continuous paper from both the front and the rear, be sure to leave enough room around the printer for two stacks of fresh paper and a third stack of printed output. It is also important to keep your stacks of fresh paper aligned with the paper loaded in the tractor so that the paper feeds smoothly into the printer. The following illustration shows three ways to position your printer and paper: with the front tractor loaded, with the rear tractor loaded, and with both tractors loaded. 2-2 Paper Handling Using the Two-Tractor System CAUTION: Make sure that your stack of printed pages does not interfere with the rear tractor's paper supply. front-loaded paper rear-loaded paper CAUTION: Be sure your printed output folds properly as it comes out of the printer. It should fold at the perforation between pages. P a p e r Handling 2-3 Using the Two-Tractor System Loading paper onto the front tractor The following steps show you how to load paper onto the front tractor.

1. Turn off the printer. 2. Open the front cover by lifting its bottom edge up and toward . you.

Using the Two-Tractor System Release the sprocket lock levers on both the right and left sprocket units by pulling each lever down. 4. Slide the left sprocket unit all the way to the left., Lock it in place by pushing the sprocket lock lever up. P a p e r Handling 2-5 Using the Two-Tractor System 5.

Now slide the right sprocket unit to approximately match the . width of your paper. (Do not lock it in place yet.) 6. Slide the two paper supports so that they are spaced evenly . between the two sprocket units. 2-6 Paper Handling Using the Two-Tractor System 7. Open both sprocket covers. 8. Fit the first four holes in the paper over the pins o f both .

sprocket units. (The side of the paper that you want to print on should be facing you.) Then close the sprocket covers. CAUTION: Make sure your paper has a clean, straight edge before inserting it into the printer. P a p e r Handling 2-7 Using the Two-Tractor System 9. Slide the right sprocket unit so that the paper is straight and has . no wrinkles. Then lock the sprocket unit in place by pushing the sprocket lock lever up. CAUTION: Be sure the sprocket units are not too far apart.

If they pull your paper too tightly or tear the edges of the paper holes, a paper jam may result. To remove any excess tension in your paper, release the right sprocket and lock it again. 10. Close the front cover. The paper is now loaded to the standby position.

2-8 Paper Handling Using the Two-Tractor System 11. Turn on the printer. The POWER and PAPER OUT lights go on. Also, either the front or rear tractor arrow on the PAPER SELECT indicator lights up, depending on which tractor was selected when the printer was turned off last, 12. Check the PAPER SELECT indicator to see which tractor is selected: 1 If the front tractor arrow is lit up, press the LINE FEED/LOAD button to load the paper.

Paper Handling 2-9 Using the Two-Tractor System l off line and then press the FRONT/REAR button to switch to If the rear tractor arrow is lit up, make sure the printer is the front tractor. When the printer switches tractors, it also loads the paper automatically. 13. Press the ON LINE button to put the printer on line so it is ready to print. The paper is now loaded to the top of form position. If it looks like the printing will start too high or low on the page, see the section on adjusting the top of form position in Chapter 3. 2-10 Paper Handling Using the Two-Tractor System Notes: 1 Before you begin printing, be sure to check the page length and skip over perforation settings, and readjust the settings if necessary. See the sections on page length and skip over perforation in Cha#qr 3. If you open the top cover while the DFX is printing, the printer beeps four times, goes off line, and stops printing. To resume printing, close the top cover and press the ON LINE button.

l Loading paper onto the rear tractor The following steps show you how to load paper onto the rear tractor. You can load paper onto the rear tractor without removing the paper from the front tractor. 1. Turn off the printer. Paper Handling 2-11 Using the Two-Tractor System 2. Open the top cover by lifting its front edge up and away from you. 3. Open the rear flap at the back of the top cover. 2-12 Paper Handling Using the Two-Tractor System release the sprocket lock levers 4. Facing the front of the printer, on the rear tractor's right and left sprocket units by Pushing each lever back. 5. Slide the left sprocket unit all the way to the left. Lock it in place by pulling the sprocket lock lever forward.



[You're reading an excerpt. Click here to read official EPSON DFX-8000 user guide](http://yourpdfguides.com/dref/562372)
<http://yourpdfguides.com/dref/562372>

Paper Handling 2-13 Using the Two-Tractor System 6. Now slide the right sprocket unit to approximately match the width of your paper. (Do not lock it in place yet.) 7. Slide the two paper supports so that they are spaced evenly between the two sprocket units. 2-14 Paper Handling Using the Two-Tractor System 8. Open both sprocket covers.

9. With the side of the paper you want to print on facing down, insert the paper through the opening at the rear of the printer. You may find it easier to load the paper by standing to the side of the printer. That way, you can feed the paper through the rear opening with one hand and pull it through with the other. Paper Handling 2-15 Using the Two-Tractor System CAUTION: Make sure your paper has a clean, straight edge before inserting it into the printer. 10. Fit the first four holes in the paper over the pins of the sprocket units. Then close the sprocket covers. 11. Slide the right sprocket unit so that the paper is straight and has no wrinkles.

Then lock the sprocket unit in place by pulling the sprocket lock lever forward. 2-16 Paper Handling Using the Two-Tractor System CAUTION: Be sure the sprocket units are not too far apart. If they pull your paper too tightly or tear the edges of the paper holes, a paper jam may result. To remove any excess tension in your paper, release the right sprocket and lock it again. 12. Close the top cover and the rear flap. The paper is now loaded to the standby position.

13. Turn on the printer. The POWER and PAPER OUT lights go on.

Also, either the front or rear tractor arrow on the PAPER SELECT indicator lights up, depending on which tractor was selected when the printer was turned off last. Paper Handling 2-17 Using the Two-Tractor System 14. Check the PAPER SELECT indicator to see which tractor is selected. If the rear tractor arrow is lit up, press the LINE FEED/LOAD 11' button to load the paper. CU.

If the front tractor arrow is lit up, make sure the printer is off line and then press the FRONT/REAR button to switch to the rear tractor. When the printer switches tractors, it also loads the paper automatically. Paper Handling 2-18 Paper Handling Using the Two-Tractor System 15. Press the ON LINE button to put the printer on line so it is ready to print. The paper is now loaded to the top of form position.

If it looks like the printing will start too high or low on the page, see the section on adjusting the top of form position in Chapter 3. Notes: 1 Before you begin printing, be sure to check the page length and skip over perforation settings, and readjust the settings if necessary. See the section on page length and skip over perforation in Chapter 3. If you open the top cover while the DFX is printing, the printer beeps four times, goes off line, and stops printing. To resume printing, close the top cover and press the ON LINE button. Paper Handling 2-19 Switching between Front and Rear Tractors You can easily switch between paper loaded on the front tractor and paper loaded on the rear tractor with the FRONT/REAR button. The following steps describe the procedure for switching from the front tractor to the rear tractor, but you can follow the same steps to switch from the rear tractor to the front tractor. (To switch tractors when the optional pull tractor is installed, see Chapter 5.) WARNING: Never switch between tractors when labels are loaded in the printer or a paper jam may result. Instead, completely remove the labels first by tearing off the fresh supply below the tractor and pressing the FORM

FEED or LINE FEED button to eject the remaining labels. !!!!!b Before you start, make sure the printer is turned on and that the front tractor is selected. (The front tractor arrow on the PAPER SELECT indicator should be lit up.) If you are in the middle of printing a document, wait for the printer to finish printing before you switch tractors. Then follow these steps. 1. If the printer is on line, press the ON LINE button to take it off line. 2-20 Paper Handling

Switching between Front and Rear Tractors 2. If there is no paper loaded in the rear tractor, load paper to the standby position. (See the section on loading paper onto the rear tractor in this chapter for instructions.

3. Open the paper separator cover at the back of the top cover. 4. If you have a printed document still in the printer, OF excess paper that has been fed through the printer, use the short tearoff feature described in Chapter 3 to tear off the document or excess paper. Paper Handling 2-21 Switching between Front and Rear Tractors WARNING: Always tear off the printed document and any excess paper that has been fed through the printer before switching tractors. Never feed more than one page backward 5. Close the paper separator cover. 6. Make sure the top cover is closed and then press the FRONT/REAR button to switch to the rear tractor. The printer feeds the front-loaded paper back to the standby position and advances the rear-loaded paper to the top of form position.

2-22 Paper Handling Switching between Front and Rear Tractors 7. Press the ON LINE button to put the printer on line so it is ready to print. Note: If you open the top cover while the DFX is printing, the printer beeps four times, goes off line, and stops printing. To resume printing, close the top cover and press the ON LINE button. Paper Handling 2-23 Changing the Paper The following steps describe the procedure for changing paper on the front tractor, but you can follow the same steps when you change the paper on the rear tractor. Before you start, make sure the printer is turned on and the front tractor is selected.

(If you are changing the paper on the rear tractor, the rear tractor should be selected instead.) !!!!!9 WARNING: Never change paper using the following procedure if labels are already loaded in the printer. Instead, completely remove the labels first by tearing off the fresh supply below the tractor and pressing the FORM FEED or LINE FEED button to eject the remaining labels.

Then load new paper as described in this chapter, 1. If the printer is on line, press the ON LINE button to take it off line. 2-24 Paper Handling Changing the Paper 2. If you have a printed document still in the printer, or excess paper that has been fed through the printer, use the short tearoff feature described in Chapter 3 to tear off the document or excess paper. WARNING: Always tear off printed documents before changing the paper. Never feed more than one page backward through the printer. 3. Press the FRONT/REAR button to switch to the rear tractor. The front-loaded paper automatically feeds back to the standby position. Paper Handling 2-25 Changing the Paper 4.

. Open the front cover. (To change the rear-loaded paper, open the top cover and the rear flap.) 5. .

Open the sprocket covers and remove the paper from the tractor.



[You're reading an excerpt. Click here to read official EPSON](http://yourpdfguides.com/dref/562372)

[DFX-8000 user guide](http://yourpdfguides.com/dref/562372)

<http://yourpdfguides.com/dref/562372>

..... Other control panel features...

.....
.....
.....
.....

.... Setting the DIP Switches

.....
.....
.....

... Changing a DIP switch setting..

.....
.....
.....

.. The DIP switch tables

.....
.....
.....
.....

..... The DIP switch functions ...

.....
.....
.....

.. 3-2 3-2 3-4 3-6 3-7 3-7 3-10 3-14 Page Length ...

.....
.....
.....

... 3-17 Skip Over Perforation . .

.....
.....
.....

..... 3-18 Using the Paper Memory Feature

.....
.....
.....

..... 3-20 Saving paper format and thickness information ..

.....

.... 3-21 Loading paper format from memory .

.....
.....
.....

3-31 Adjusting the Top of Form Position

.....

.....
... 3-33 *Adjusting the Printing Position* .

.....
.....

.....
.....
.....

3-37 *Using Short Tear-Off*.....

.....
.....
.....
.....

..... 3-40 . *Selecting Typestyles* .

.....
.....
.....

.....
.....
.....
.....

3-43 *Character fonts*.....

.....
.....
.....

.....
.....
.....

... 3-43 . 3-45 *Character spacing*.....

.....
.....
.....
.....

..... *Condensed mode* .

.....
.....

.....
.....
.....
.....

..... 3-46 *Selecting an International Character Set*.....

.....
.....

..... 3-47 *Choosing a Character Table* .

.....
.....
.....
.....

..... 3-49 *Data Dump Mode* .

.....
.....
.....

.....
.....

.....
.....

.. 3-51 Using the Printer 3-1 Operating the Control Panel The DFX-8000's control panel gives you access to several powerful features. The control panel buttons let you control paper loading, primer settings, and more. The control panel indicator lights give you status information such as which mode the printer is in, which tractor is loaded with paper, and which tractor is ready to print. The following sections describe the functions of the control panel's lights and buttons.



[You're reading an excerpt. Click here to read official EPSON](#)

[DFX-8000 user guide](#)

<http://yourpdfguides.com/dref/562372>

The indicator lights on the control panel let you check the current status of the printer. Below is an illustration of the control panel lights and a description of their functions. Lights POWER (green) On when the power switch is on and power is supplied to the printer. READY (green) On when the printer is on line and ready to receive data from your computer.

This light flickers during printing. 3-2 Using the Printer Operating the Control Panel PAPER OUT (red) On when the printer is out of paper. This light goes on whenever there is no paper positioned behind the print head, even if there is paper loaded on the tractors in the standby position. (The printer also beeps when it is out of paper.) ON LINE (green) On when the printer is on line and ready to receive and print data from the computer. Also, when the print head overheats, the ON LINE light blinks.

The printer stops printing, waits several minutes while the print head cools, and then resumes printing. TEAR OFF (green) On when the printer is in tear-off mode. TOP OF FORM (green) On when the printer is in top of form mode. When this light blinks, you can adjust the loading and top of form positions.

PAPER SELECT (red/green) The front tractor arrow goes on when the front tractor is selected.

The rear tractor arrow goes on when the rear tractor is selected. The light is green when paper is loaded, even if the paper is in the standby position, and red when the tractor is completely out of paper. Using the Printer 3-3 Operating the Control Panel Buttons The control panel buttons let you perform printer operations quickly and easily. Below is an illustration of the control panel buttons and a description of their functions. OPOWER c1a ON LINE c3 M FEED LINE FEED TEAR OFF FEED FORM - - - v, -. FRONT/REAR ON LINE This button controls the printer's on line status. Press this button to put the printer on line or take it off line. When the printer is on line, the ON LINE light is on and the printer can receive and print data from the computer. When the printer is in top of form mode, you can press the ON LINE button to exit the mode without setting a new top of form position.

You can also press the ON LINE button to enter tear-off mode. See the sections on adjusting the top of form position and using short tearoff in this chapter. FORM FEED/COPY When the printer is off line, press this button to advance the paper to the top of the next page. To adjust the position the paper is fed to, see the section on adjusting the top of form position in this chapter. When the printer is on line, press this button to select or cancel copy mode. See the section on printing on special paper in Chapter 2 for more information. 3-4 Using the Printer Operating the Control Panel LINE FEED/LOAD When the printer is off line, you use this button to load paper or to advance the paper after you load it. To advance the paper one line, press this button once. To advance the paper continuously, hold down the button. TEAR OFF The TEAR OFF button feeds the paper to the printer's tear-off edge so you can tear off your document without losing the paper.

normally lost between printing jobs. To use this feature, take the printer off line after your document finishes printing and press the TEAR OFF button. The printer feeds the paper to the printer's tear-off edge. After you tear off the document, press the TEAR OFF or ON LINE button to feed the paper back to the top of form position. If the perforation of your paper does not align exactly with the printer's tear-off edge, you can use the MICRO FEED buttons to adjust the tear-off position.

See the section on using short tear-off in this chapter. WARNING Never use the TEAR OFF button with labels. Press the FORM FEED or LINE FEED button instead to feed the printed labels to a point where you can tear them off. MICRO FEED When the printer is off line, the two MICRO FEED buttons advance or reverse the loaded paper in 1/216th-inch increments. You can use these buttons to adjust the paper memory, top of form, loading, printing, and tear-off positions.

For more information, see the sections on using the paper memory and short tear-off features and adjusting the top of form and printing positions in this chapter. TOP OF FORM When the printer is off line, press this button to enter or exit top of form mode. You can also use this button to enter paper memory settings. For more information, see the sections on adjusting the top of form position and using the paper memory feature in this chapter. Using the Printer 3-5 Operating the Control Panel FRONT/REAR When the printer is off line, press this button to select the front or rear tractor. If you have been using paper loaded on one tractor, first remove the printed output before switching to the other tractor. When you switch tractors, the printer feeds the paper that is already loaded backward to the standby position and loads paper on the newly selected tractor. Other control panel features The control panel also gives you access to several special functions. Self test: You can run the self test to check whether your printer operates properly. The self test prints the current DIP switch settings and the characters in the printer's ROM (Read Only Memory).

Your printer offers both draft and NLQ self tests. To start the self test, hold down the LINE FEED or FORM FEED button and turn on the printer. See the section on running the self test in Chapter 1 for more information. Data dump: To enter data dump mode, hold down the LINE FEED and FORM FEED buttons and turn on the printer. This feature prints the codes that are sent to the printer so that advanced users can determine the cause of communication problems between the computer and printer. See the section on data dump mode in this chapter for more information. 3-6 Using the Printer Setting the DIP Switches The DFX-8000 has three sets of DIP (Dual Inline Package) switches located under a small cover below the front tractor. By changing the settings of these switches, you can control various printer features, such as the character set, the page length, and the printing speed. The DIP switch tables starting on page 3-11 describe the functions of the DIP switches. Because the factory (default) settings are the needs of most users, you probably won't change DIP switch settings very often.

When you do need to change a DIP switch, follow the steps below. Be sure to turn off the printer before you start and turn it on again when you are done. Note: DIP switch settings take effect only after you turn on or reset the printer. Changing a DIP switch setting To change a DIP switch setting, follow these steps: 1. Turn off the printer.

Using the Printer 3-7 Setting the DIP Switches 2. Open the front cover. If there is paper loaded on the front tractor, remove it. 3. Open the DIP switch cover as shown below. 3-8 Using the Printer Setting the DIP Switches 4.



[You're reading an excerpt. Click here to read official EPSON](http://yourpdfguides.com/dref/562372)

[DFX-8000 user guide](http://yourpdfguides.com/dref/562372)

<http://yourpdfguides.com/dref/562372>

Use a pointed instrument, such as the tip of a pen or pencil; to turn a switch on or off. A DIP switch is on when it is up, and off when it is down. CAUTION: Always make sure the printer is turned off before you change the DIP switch settings. 5. Close the DIP switch cover. Using the Printer 3-9 Setting the DIP Switches 6. Replace the paper and close the front cover. The new DIP switch settings take effect when you turn on the printer. The DIP switch tables The tables on the next page describe the functions of the DIP switches.

The shaded boxes show the default or factory settings. See the page numbers listed on the right for more information about each feature. 3-10 Using the Printer Setting the DIP Switches DIP Switch 1 DIP Switch 2 1 SW 1 Description Default character set 1 ON 1 OFF 1 Page 2-5 - Interface type/parity 2-6 2-7 - Baud rate 2-8 1 See table on page 3-13. e See table on page 3-13. e 3-15 3-16 The default setting for DIP switch 1-3 varies depending on the country. ** When DIP switch 1-4 is on and the printer is in IBM emulation mode, the functions of DIP switches 1-3, 1-6, 1-7, 1-8 and 2-1 differ from those listed in this table. See the table on page 3-13 for their functions in IBM emulation mode. Using the Printer 3-11 Setting the DIP Switches DIP Switch 3 3-2 Page length 1-inch skip over perforation Paper memory Ovf&laooinh m&i-oat-t forms Multi-part forms with labels Skip over binding Handshaking protocol 12 inches ON 11 inches I 3-17 I 3-18 I 3-20 1 Memory 2 Valid Valid ON X-on/X-&f 3-16 1 3-16 I 1 The default setting for DIP switch 3-2 varies depending on the country. International character set * The default settings for these DIP switches vary depending on the country. 3-12 Using the Printer Setting the DIP Switches Interface/Parity selection Baud rate selection When you select IBM emulation mode by turning on DIP switch 1-4, DIP switches 1-3, 1-6, 1-7, 1-8, and 2-1 function differently than they do in Epson ESC/P mode.

The tables below show the functions of these switches in IBM emulation mode. DIP switch functions in IBM emulation mode SW 1-3 1-6 1-7 1-8 2-1 FF command at the top of form position Invalid Valid Default character table See table below. Q8scriptiin Automatic cafridae return ON OFF OFF ON IBM emulation mode character tables Default character table Table 1 I SW 1-6 O N SW 1-7 O N SW 1-8 O N Table 2* Table 2 is selected when any one of these switches is turned off. l The Appendix shows the characters included in each character table. Using the Printer 3-13 Setting the DIP Switches The DIP switch functions This section describes the different features you can control with the printer's DIP switches.

Slashed zero When DIP switch 1-2 is on, the printer prints slashed zeros(0). When the DIP switch is off, the printer prints open zeros (0). This feature is useful for clearly distinguishing between uppercase 0 and zero when printing documents such as program lists. Printer mode When DIP switch 1-4 is on, the printer operates in IBM emulation mode. When the DIP switch is off, the printer operates in Epson ESC/P mode.

The functions of DIP switches 1-3, 1-6, 1-7, 1-8, and 2-1 in IBM emulation mode differ from their functions in Epson ESC/P mode. The tables on the previous page describe the special functions of these DIP switches in IBM emulation mode. Default character set When DIP switch 2-1 is on, the user-defined character set is the default. User-defined characters are maintained in the printer's memory even when the power is turned off, so you can select the user-defined character set simply by turning on this DIP switch. However, when the switch is on, you cannot define new userdefined characters. The setting of this DIP switch takes effect only if DIP switch 1-4 is set for Epson ESC/P mode. See Chapter 4 for more information on user-defined characters. Draft printing speed When DIP switch 2-2 is off, high-speed draft mode is selected. When the switch is on, normal draft mode is selected. This switch only affects the printer if DIP switch 1-5 is set for draft mode (turned off) or if draft mode is selected through your software.

In high-speed draft mode, the DFX-8000 can print up to 1066 characters per second at 10 cpi (characters per inch). In normal 3-14 Using the Printer Setting the DIP Switches draft mode, the DFX-8000 prints up to 800 characters per second at 10 cpi. Normal draft mode produces characters that are more fully formed than characters produced in high-speed draft mode. Note: High-speed draft mode is available only for 10 cpi printing. Also, underlining and double-wide are the only print enhancements that work in high-speed draft mode. If you use a feature such as emphask\$:double-strike, or italics in highqmd draft mode, the printer temporarily slows to the normal draft speed until the feature is turned off. This allows you to use any print enhancement without cancelling high-speed draft mode. Bit length for serial interface When DIP switch 2-3 is on, the bit length for the serial interface is set to 7 bits. When the DIP switch is off, the bit length is set to 8 bits. Auto line feed When DIP, switch 2-4 is on, the printer adds a line feed (LF) command to every carriage return (CR) code sent by the application program.

When the switch is off, line feeds occur only when the software sends line feed commands to the printer. Since most computers and application programs automatically add line feeds to carriage returns, you should use this feature only if your text is printing all on one line. Interface parity If your computer is set up for serial communication, you need to change DIP switches 2-5 and 2-6 so that your printer and computer can communicate properly. These DIP switches control the interface type and parity. (You may also need to select a different baud rate as described in the next section.

) The table on page 3-13 shows the DIP switch settings for a parallel interface and a serial interface with odd, even, or no parity. If you Using the Printer 3-15 Setting the DIP Switches don't know what type of interface your computer requires, check your computer manual. A&o check your computer manual to make sure your computer and printer have the same parity settings. Baud rate If your computer is set up for serial communication, you may need to set the baud rate in addition to selecting serial interface and setting the parity. The baud rate is the rate at which the printer receives data from the computer. DIP switches 2-7 and 2-8 control the baud rate. The table on page 3-13 shows the DIP switch settings for the printer's four baud rate settings. Check your computer or application program manual for the correct baud rate setting. Your computer and printer should always be set to the same baud rate. Input buffer The printer's input buffer provides additional memory to free up the computer while you print large amounts of text or graphics.



[You're reading an excerpt. Click here to read official EPSON DFX-8000 user guide](http://yourpdfguides.com/dref/562372)
<http://yourpdfguides.com/dref/562372>