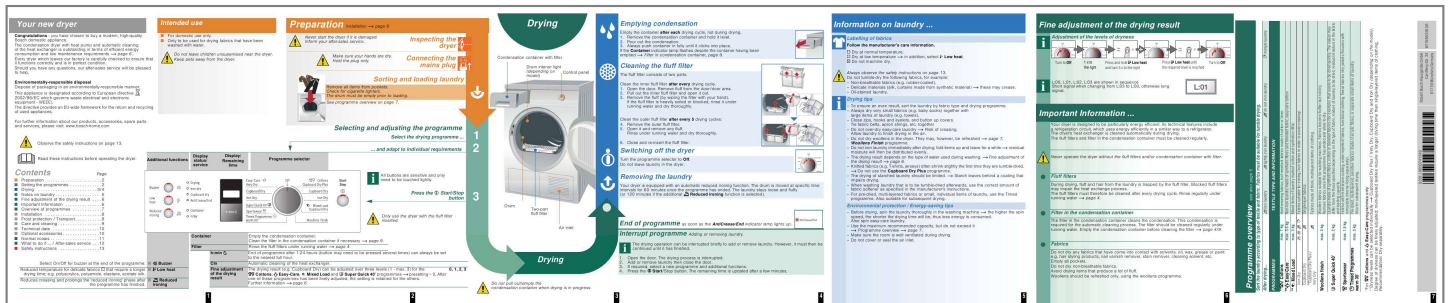




# Your PDF Guides

You can read the recommendations in the user guide, the technical guide or the installation guide for BOSCH WTW863S0GB. You'll find the answers to all your questions on the BOSCH WTW863S0GB in the user manual (information, specifications, safety advice, size, accessories, etc.). Detailed instructions for use are in the User's Guide.

## User manual BOSCH WTW863S0GB User guide BOSCH WTW863S0GB Operating instructions BOSCH WTW863S0GB Instructions for use BOSCH WTW863S0GB Instruction manual BOSCH WTW863S0GB



[You're reading an excerpt. Click here to read official BOSCH WTW863S0GB user guide](http://yourpdfguides.com/dref/4545290)  
<http://yourpdfguides.com/dref/4545290>

**Manual abstract:**

Fabrics become fluffier but not dry. Remove fabrics once the programme has ended and allow to dry. @@@@ Also for subsequent drying. page 8 Make sure your hands are dry. Hold the plug only. Connecting the mains plug Condensation container with filter Drum interior light (depending on Control panel model) Low heat. Turn to Off 1 x to the right Press and hold Low heat and turn 5 x to the right Press Low heat until the required level is reached Turn to Off Cleaning the fluff filter The fluff filter consists of two parts. Clean the inner fluff filter after every drying cycle. 1. Open the door.

Remove fluff from the door/door area. 2. Pull out the inner fluff filter and open it out. 3. Remove the fluff (by wiping the filter with your hand). @@ Clean the outer fluff filter after every 5 drying cycles: 4. Remove the outer fluff filter. 5. Open it and remove any fluff. Rinse under running water and dry thoroughly.

6. Close and re-insert the fluff filter. See programme overview on page 7. Drying tips – To ensure an even result, sort the laundry by fabric type and drying programme. – Always dry very small fabrics (e.g. baby socks) together with large items of laundry (e.g. towels). – Close zips, hooks and eyelets, and button up covers.

Tie fabric belts, apron strings, etc. together – Do not over-dry easy-care laundry Risk of creasing. Allow laundry to finish drying in the air. – Do not dry woollens in the dryer. They may, however, be refreshed page 7, Woollens Finish programme. – Do not iron laundry immediately after drying; fold items up and leave for a while residual moisture will then be distributed evenly. Fine adjustment of – The drying result depends on the type of water used during washing. the drying result page 6. – Knitted fabrics (e.g.

@@ Do not use the Cupboard Dry Plus programme. – The drying of starched laundry should be limited. Starch leaves behind a coating that impairs drying. @@@@ Do not leave laundry in the dryer. All buttons are sensitive and only need to be touched lightly.

Never operate the dryer without the fluff filters and/or condensation container with filter. see also page 5 Contents Preparation . . . .

.....

. . . . Setting the programmes . . . . .

. . . Drying . .

.....

.....

. . . . . Notes on laundry . . . . .

.....

.....

Fine adjustment of the drying result Important Information . . . . .

. Overview of programmes . . . . . Installation .

.....

.....

. . . . . Frost protection / Transport . .

. . . . . Care and cleaning . . . . .

.....

. . . . . Technical data .

.....

. . . . . Optional accessories . . . . .

.....

. . Normal noises . . .

.....

. . . . . What to do if ... / After-sales service Safety instructions . . .

.....

.....

.....

. . . . . max. 7 kg max. 3.5 kg max. 3 kg max.

1.5 kg Only use the dryer with the fluff filter inserted. Two-part fluff filter Air inlet max. 3 kg max. 2 kg Container Filter h:min Iron Dry Cupboard Dry

\*Cupboard Dry Plus / Very Dry PROGRAMMES Cottons Easy-Care Mixed Load Select On/Off for buzzer at the end of the programme.

@@polyacrylics, polyamide, elastane, acetate silk. Reduces creasing and prolongs the 'reduced ironing' phase after the programme has finished. Reduced ironing 1 2 3 4 5 6 \*\* \*\* \*\* Do not pull out/empty the condensation container when drying is in progress. Sportswear Buzzer Low heat CIn Fine adjustment of the drying result Woollens finish Drying 1. 2.

3. 4. Open the door. The drying process is interrupted. Add or remove laundry then close the door. If required, select a new programme and additional functions. Press the Start/Stop button. The remaining time is updated after a few minutes. Super Quick 40' Do not dry any fabrics that have come into contact with solvents, oil, wax, grease or paint: e.g.

hair styling products, nail varnish remover, stain remover, cleaning solvent. etc. Empty all pockets. Do not dry non-breathable fabrics. Avoid drying items that produce a lot of fluff. Woollens should be refreshed only, using the woollens programme. Timed Programmes warm 30' Empty the condensation container. Clean the filter in the condensation container if necessary page 9. Rinse the fluff filters under running water page 4. End of programme after 1-24 hours (button may need to be pressed several times) can always be set to the nearest full hour.

Automatic cleaning of the heat exchanger. The drying result (e.g. Cupboard Dry) can be adjusted over three levels (1 - max. 3) for the 0, 1, 2, 3 Mixed Load

and Super Quick 40' programmes presetting = 0.

After Cottons, Easy-Care, one of these programmes has been finely adjusted, the setting is retained for the others. Further information page 6. The drying operation can be interrupted briefly to add or remove laundry. However, it must then be continued until it has finished. Fabrics max.

3 kg End of programme as soon as the AntiCrease/End indicator lamp lights up. Interrupt programme Adding or removing laundry. – Before drying, spin the laundry thoroughly in the washing machine the higher the spin speed, the shorter the drying time will be, thus less energy is consumed. Also spin easy-care laundry. – Use the maximum recommended capacity, but do not exceed it Programme overview page 7. – Make sure the room is well ventilated during drying. – Do not cover or seal the air inlet. Filter in the condensation container The filter in the condensation container cleans the condensation. This condensation is required for the automatic cleaning process. The filter should be cleaned regularly under running water.

Empty the condensation container before cleaning the filter page 4/9. Programme overview Page . . . 2 . . . 2 . 3/4 ..

5 . . . 6 . .

. 6 . . . 7 .

. . 8 . . . 8 . . . 9 . .

10 . . 10 . . 11 . . 12 . . 13 Removing the laundry Fluff filters During drying, fluff and hair from the laundry is trapped by the fluff filter. Blocked fluff filters may impair the heat exchange process.

The fluff filters must therefore be cleaned after every drying cycle. Rinse regularly under running water page 4. Press the Start/Stop button 3 Drum Your dryer is equipped with an automatic reduced ironing function. @@The laundry stays loose and fluffy (or 120 minutes if the additional Reduced ironing function is selected). Environmental protection / Energy-saving tips 9201 / 9000741549 .

.. and adapt to individual requirements Switching off the dryer Fabrics made of thick, multilayered items of clothing. Selecting and adjusting the programme TEXTILE TYPE AND INFORMATION 1 2 Your dryer is designed to be particularly energy efficient. Its technical features include a refrigeration circuit, which uses energy efficiently in a similar way to a refrigerator.

The dryer's heat exchanger is cleaned automatically during drying. The fluff filters and filter in the condensation container must be cleaned regularly.

\*741549\* 7 Important Information ... Hard-wearing fabrics, boil-resistant fabrics made of cotton or linen. @@Mixed items of laundry made of cotton and synthetics (Mix). @@Single-layer fabrics. Remove all items from pockets. Check for cigarette lighters.



[You're reading an excerpt. Click here to read official BOSCH](http://yourpdfguides.com/dref/4545290)

[WTW863S0GB user guide](http://yourpdfguides.com/dref/4545290)

<http://yourpdfguides.com/dref/4545290>

The drum must be empty prior to loading, these may crease. Sort the laundry according to type of textile and fabric. Fabrics must be suitable for tumble drying. After drying... iron laundry lightly iron laundry do not iron laundry @@@@ Sorting and loading laundry Always observe the safety instructions on page 13. Do not tumble-dry the following fabrics, for example: – Non-breathable fabrics (e.g.

rubber-coated). – Delicate materials (silk, curtains made from synthetic material) – Oil-stained laundry. L:00, L:01, L:02, L:03 are shown in sequence Short signal when changing from L:03 to L:00, otherwise long signal. Robert Bosch Hausgeräte GmbH Carl-Wery-Str. 34 81739 München/Germany

Congratulations - you have chosen to buy a modern, high-quality Bosch domestic appliance.

@@@@ For domestic use only. Only to be used for drying fabrics that have been washed with water. . Never start the dryer if it is damaged. Inform your after-sales service.

Inspecting the dryer Do not leave children unsupervised near the dryer. Keep pets away from the dryer. Empty the container after each drying cycle, not during drying. 1. Remove the condensation container and hold it level. 2. Pour out the condensation. 3. Always push container in fully until it clicks into place. If the Container indicator lamp flashes despite the container having been emptied Filter in condensation container, page 9.

Labelling of fabrics Follow the manufacturer's care information. Dry at normal temperature. Dry at low temperature in addition, select Do not machine dry. Adjustment of the levels of dryness \*For Cottons and Easy-Care programmes only \*\*Dryness levels can be selected individually Cupboard Dry Plus / Very Dry, Cupboard Dry and Iron Dry (depending on the model). @@Recommendation: Dry separately. mangle laundry WTW863S0GB Your new dryer Intended use Preparation Installation Drying Emptying condensation Information on laundry ... Fine adjustment of the drying result Installation ----- Scope of delivery: dryer, installation and operating instructions. Check dryer for transport damage.

The dryer is very heavy. Do not attempt to lift it on your own. Be careful to avoid sharp edges. Do not set up in a room that is susceptible to frost. Freezing water may cause damage.

If in doubt, have the appliance connected by a specialist. Do not lift the dryer by protruding parts (e.g. the door) - risk of breakage. Take all accessory parts out of the drum.

The drum must be empty. Care and cleaning Heat exchanger Appliance must be switched off. Technical data Dimensions (DxWxH) Weight Max. capacity Condensation container Connection voltage Connected load Fuse protection Ambient temperature Product number Production number 60 x 60 x 85 cm (height adjustable) approximately 51 kg 7 kg 4.0 l 220-240 V max. 1000 W 10 A 5 - 35 °C under the door Normal noises During drying, the compressor and the pump generate some noise which is entirely normal. What to do e the mains lead Risk of electric shock. Only load the drum with laundry. Check the contents before you switch the dryer on. Do not use the dryer if the laundry has been in contact with solvents, oil, wax, grease or paint (e.

g. hair styling products, nail varnish remover, stain remover, cleaning solvent, etc.) Risk of fire/explosion. Dust (e.g. coal dust, flour) poses a danger: Do not use the dryer Risk of explosion Do not put laundry containing foamed material/rubber in the dryer elastic material may be destroyed and the dryer be damaged due to possible deformation of the foamed material. When cleaning the fluff filter, make sure that no foreign material (down or filling material) gets into the air duct opening. If necessary, clean the drum beforehand with a vacuum cleaner. If foreign material should still get into the air duct call the after-sales service Risk of fire/explosion. Switch off the dryer once the programme has ended.

The water from condensation is not drinking water and may be contaminated with fluff. Do not use the dryer if it is defective or if you suspect that it is. Repairs must only be carried out by the after-sales service. Do not use the dryer if the mains cable is defective. To avoid danger, only have the defective mains cable replaced by the after-sales service.

Always pull the mains plug out of the socket before changing the bulb for the interior light Risk of he condensation container page 4. Select any programme using the programme selector. Press the Start/Stop button condensed water is pumped into the container Wait 5 minutes and then empty the condensation container again. @@@@Same as WTZ 11310, but with pull-out worktop. @@@@Moisture sensors measure how damp the laundry is.

@@@1. Open the door. 2. @@- Transport the dryer in a vertical upright position. – Following transportation, do not use the dryer for two hours. @@This allows the heat to dissipate. Other intermittent noises Not an error. and vibrations. Normal noises page 11. @@seconds.

Push the condensation container all the way in. Not an error. Normal noises page 11. @@@@Close the cover cap. Never operate the dryer without a cover cap. @@@@Keep pets away from the dryer. Make sure your hands are dry. @@Check for cigarette lighters. The drum must be empty prior to loading. @@Display status/ service Display/ Remaining time .  
.. @@Additional functions Programme selector Contents Preparation . . .

. . . . .  
. . . . .

Setting the programmes . . . . . Drying .

. . . . .  
. . . . .  
. . . . .

. Notes on laundry . . . . .

. . . . .

. Fine adjustment of the drying result Important Information . . . .

. . . . . Overview of programmes . . .

. . . . . Installation . . . . .

. . . . .  
. . . . .

. . . . . Frost protection / Transport . . . . .

. Care and cleaning . . . . .

. . . . .

Technical data . . . . .

. . . . .

. Optional accessories . . . . .

. . . Normal noises . .

. . . . .

. . . . .

What to do if ... / After-sales service Safety instructions . . . . .

. . . . .

. Page . . . .

2 . . . . 2 . . 3/4 . . . 5 .

. . . 6 . . . 6 . . .

. 7 . . . .

8 . . . . 8 .

. . . 9 . . . 10 . . . 10 .

. . 11 . . . 12 . . . @@@@polyacrylics, polyamide, elastane, acetate silk. @@Clean the filter in the condensation container if necessary page 9.

Rinse the fluff filters under running water page 4. @@Automatic cleaning of the heat exchanger. The drying result (e.g. Cupboard Dry) can be adjusted over three levels (1 - max).

@@1. Remove the condensation container and hold it level. 2. Pour out the condensation. 3.

Always push container in fully until it clicks into place. @@Clean the inner fluff filter after every drying cycle. 1. Open the door. Remove fluff from the door/door area. 2. Pull out the inner fluff filter and open it out. 3. Remove the fluff (by wiping the filter with your hand). @@Clean the outer fluff filter after every 5 drying cycles: 4.

Remove the outer fluff filter. 5. Open it and remove any fluff. Rinse under running water and dry thoroughly. 6. @@@@The laundry stays loose and fluffy Reduced ironing function is selected). (or 120 minutes if the additional with the fluff filter End of programme as soon as the AntiCrease/End indicator lamp lights up. Interrupt programme Adding or removing laundry.



[You're reading an excerpt. Click here to read official BOSCH](#)

[WTW863S0GB user guide](#)

<http://yourpdfguides.com/dref/4545290>

The drying operation can be interrupted briefly to add or remove laundry. However, it must then be continued until it has finished. n always be set Drying Do not pull out/empty the condensation container when drying is in progress. the 0, 1, 2, 3 etting = 0. After s. 1. 2.

3. 4. Open the door. The drying process is interrupted. Add or remove laundry then close the door.

If required, select a new programme and additional functions. Press the Start/Stop button. The remaining time is updated after a few minutes. 3 4 Information on laundry ... Labelling of fabrics Follow the manufacturer's care information. Dry at normal temperature. Dry at low temperature in addition, select Do not machine dry. Low heat.

Fine adjustment of the drying result Adjustment of the levels of dryness Turn to Off 1 x to the right Press and hold Low heat and turn 5 x to the right Press Low heat until the required level is reached Turn to Off Always observe the safety instructions on page 13. Do not tumble-dry the following fabrics, for example: – Non-breathable fabrics (e.g. rubber-coated). – Delicate materials (silk, curtains made from synthetic material) – Oil-stained laundry. these may crease. L:00, L:01, L:02, L:03 are shown in sequence Short signal when changing from L:03 to L:00, otherwise long signal. Drying tips – To ensure an even result, sort the laundry by fabric type and drying programme. – Always dry very small fabrics (e.g. baby socks) together with large items of laundry (e.g. towels). – Close zips, hooks and eyelets, and button up covers. Tie fabric belts, apron strings, etc. together – Do not over-dry easy-care laundry Risk of creasing. Allow laundry to finish drying in the air. – Do not dry woollens in the dryer. They may, however, be refreshed page 7, Woollens Finish programme. – Do not iron laundry immediately after drying; fold items up and leave for a while residual moisture will then be distributed evenly.

Fine adjustment of – The drying result depends on the type of water used during washing. the drying result page 6. – Knitted fabrics (e.g. @@Do not use the Cupboard Dry Plus programme. – The drying of starched laundry should be limited. Starch leaves behind a coating that impairs drying. @@@@Also suitable for subsequent drying. Important Information ..

. Your dryer is designed to be particularly energy efficient. Its technical features include a refrigeration circuit, which uses energy efficiently in a similar way to a refrigerator. The dryer's heat exchanger is cleaned automatically during drying. The fluff filters and filter in the condensation container must be cleaned regularly. Never operate the dryer without the fluff filters and/or condensation container with filter. Fluff filters During drying, fluff and hair from the laundry is trapped by the fluff filter. Blocked fluff filters may impair the heat exchange process. The fluff filters must therefore be cleaned after every drying cycle.

Rinse regularly under running water page 4.

Environmental protection / Energy-saving tips – Before drying, spin the laundry thoroughly in the washing machine the higher the spin speed, the shorter the drying time will be, thus less energy is consumed. Also spin easy-care laundry. – Use the maximum recommended capacity, but do not exceed it Programme overview page 7. – Make sure the room is well ventilated during drying. – Do not cover or seal the air inlet.

Filter in the condensation container The filter in the condensation container cleans the condensation. This condensation is required for the automatic cleaning process. The filter should be cleaned regularly under running water. Empty the condensation container before cleaning the filter page 4/9. Fabrics Do not dry any fabrics that have come into contact with solvents, oil, wax, grease or paint: e.

g. hair styling products, nail varnish remover, stain remover, cleaning solvent. etc. Empty all pockets. Do not dry non-breathable fabrics. Avoid drying items that produce a lot of fluff. @@Fabrics must be suitable for tumble drying. After drying...

@@@7 kg max. 3.5 kg max. @@@@Mixed items of laundry made of cotton and synthetics (Mix). @@Single-layer fabrics. Fabrics made of thick, multilayered items of clothing. max. 3 kg max. 2 kg max. 1.

5 kg max. @@Fabrics become fluffier but not dry. Remove fabrics once the programme has ended and allow to dry.

@@@@@@@@@@@@@@@@@@@@@Check dryer for transport damage. The dryer is very heavy.

Do not attempt to lift it on your own. Be careful to avoid sharp edges. Do not set up in a room that is susceptible to frost. Freezing water may cause damage. If in doubt, have the appliance connected by a specialist.

Do not lift the dryer by protruding parts (e.g. the door) - risk of breakage. Take all accessory parts out of the drum. @@Cln appears in the display panel. Do not pull out the condensation container during the cleaning process. Dryer housing, control panel, air intake Wipe with a soft, damp cloth. Do not use harsh cleaning agents or solvents. Remove detergent and cleaning agent residue immediately. Some water may collect between the window and the seal during drying.

This does not affect the proper operation of your dryer in any way. 1. Setting up the dryer – The appliance plug must always be accessible. – Ensure that the appliance is installed on a clean, level and firm surface. – Do not obstruct the air inlet on the front of the dryer. – Keep the area around the dryer clean. – Make the dryer level using the threaded feet and a spirit level. – Do not remove the threaded feet under any circumstances. Do not set up the dryer behind a door or sliding door, as this may obstruct the dryer door or prevent it from opening. This will prevent a potentially fatal danger to children from locking themselves in.

Filter in the condensation container The filter is cleaned automatically when the condensation container is emptied. However, the filter should still be cleaned regularly under running water This prevents stubborn deposits/dirt from building up. 1. Pull out the condensation container. 2.

Pull the filter out of its snap-in lock. Clean and level Make sure that the air inlet remains unobstructed 2. Mains connection see Safety instructions page 13. – Connect to an AC earthed socket. If in doubt have the socket checked by a specialist.

– The mains voltage and the voltage shown on the rating plate ( page 10) must be the same. – The connected load and necessary fuse protection are specified on the rating plate. Do not operate the dryer if there is a danger of frost. 3. Clean the filter under running water or in the dishwasher. Frost protection Preparation 1. 2. 3. 4. 5.

4. Refit the filter. 5. Insert the condensation container so that it locks into place. Only operate the dryer with the filter inserted. Empty the condensation container page 4. Select any programme using the programme selector. Press the Start/Stop button condensed water is pumped into the container Wait 5 minutes and then empty the condensation container again.



[You're reading an excerpt. Click here to read official BOSCH](http://yourpdfguides.com/dref/4545290)

[WTW863S0GB user guide](http://yourpdfguides.com/dref/4545290)

<http://yourpdfguides.com/dref/4545290>



Turn the programme selector to Off. Moisture sensor The dryer is equipped with stainless steel moisture sensors.

Moisture sensors measure how damp the laundry is. @@1. Open the door. 2. @@– Transport the dryer in a vertical upright position.

– Following transportation, do not use the dryer for two hours. The dryer contains residual water; this can flow out if the dryer is tilted. 8 9 Technical data Dimensions (DxWxH) Weight Max. capacity Condensation container Connection voltage Fuse protection Ambient temperature Product number Production number 60 x 60 x 85 cm (height adjustable) approximately 51 kg 7 kg 4.0 l 220-240 V max.

1000 W 10 A 5 - 35 °C under the door Normal noises During drying, the compressor and the pump generate some noise which is entirely normal. The compressor in the dryer may occasionally generate a humming noise. The rating plate can be found on the back of the dryer. These are guide values determined under standard Consumption rates conditions. Spin speed Drying time Energy in rpm in min. \*\* consumption (residual moisture) in kWh\*\* Cottons 7 kg Cupboard Dry\* 1400 (approx. 50 %) 128 1.62 1000 (approx. 60 %) 149 1.90 800 (approx.

70 %) 169 2.19 Iron Dry\* 1400 (approx. 50 %) 92 1.13 1000 (approx. 60 %) 113 1.42 800 (approx. 70 %) 133 1.70 Easy-Care 3.5 kg Cupboard Dry\* 800 (approx. 40 %) 54 0.

57 600 (approx. 50 %) 68 0.72 \*Test programs according to DIN EN 61121 \*\*The values may differ from those given, depending on overvoltage and undervoltage, the type of fabric, composition of the laundry to be dried, the residual moisture in the fabric and the size of the load. Drum interior light (depending on model) (bulb E14, 25 W) The drum lights up after the door is opened or closed, and after the programme starts, and switches off automatically. Changing the bulb page 12.

The compressor in the dryer is ventilated from time to time, which creates a whirring sound. The automatic cleaning process causes a clicking noise. Optional accessories (from after-sales service using order number) WTZ 11310 WTZ 11300 WTZ 10290 Washer-dryer stack connection set The dryer can be placed on top of a suitable washing machine with the same width and depth to save space. @@Same as WTZ 11310, but with pull-out worktop. The process of pumping the condensation into the condensation container generates pumping noises.

Installation underneath the worktop Instead of the appliance covering plate, you must have a metal cover fitted by a specialist. 10 11 What to do if.. If you cannot rectify a fault yourself (e.g. switching off/on), please contact our after-sales service. We will always find an appropriate solution and will avoid unnecessary visits by engineers. Trust the expertise of the manufacturer and rest assured that the repair will be carried out by trained service technicians using original spare parts. @@@@The Start/Stop indicator lamp Mains plug plugged in? Programme selected? does not light up.

Empty the condensation container page 4. @@flashing. Dryer transported? Wait 2 hours and start again. The Filter indicator lamp and Rinse the fluff filter under running water page 4. Start/Stop button are flashing. Cln appears in the display panel. Not an error. Automatic cleaning of the heat exchanger. Do not empty the condensation container. Dryer does not start.

Start/Stop button selected? Door closed? Programme set? Ambient temperature greater than 5 °C? Water is leaking out. Make sure the dryer is level. The door opens by itself. Creasing. Push the door closed until you hear it click into place.

Laundry load exceeded? Remove articles of clothing immediately after the end of the programme, hang up and pull into shape. Unsuitable programme selected page 7. Warm laundry feels damper than it actually is. The selected programme does not suit the load. Use another drying programme or, in addition, select the time programme page 7.

Use fine adjustment for the drying result page 1/2 and 6. Fine layer of limescale on the humidity sensors Clean the humidity sensors page 9. Programme termination, e.g. @@Rinse the fluff filters under running water page 4. Insufficient supply of air ensure that air can circulate. Air inlet possibly blocked Clear inlet page 8. Ambient temperature higher than 35 °C ventilate the room. @@The dryer must NEVER..

. @@in rooms inside the house. to dry fabrics. be used for purposes other than those described above. be modified in terms of its technology or properties.

@@Do not leave children unsupervised near the dryer. Keep pets away from the dryer. Remove all objects from pockets, and lighters in particular Risk of explosion. Do not lean or sit on the door Risk of tipping. Secure loose cables Risk of tripping.

Do not operate a dryer if there is a risk of frost. Connect the dryer to an AC earthed socket according to specifications, otherwise it cannot be guaranteed that the appliance is completely safe. The cable cross-section must be sufficient. Only use earth-leakage circuit breakers with the following symbol: The appliance plug and socket must be compatible. Do not use multiple plugs/connectors and/or extension cables.

Do not touch or hold the appliance plug with wet hands Risk of electric shock. Never pull the appliance plug out of the socket by its cable. Do not damage the mains lead Risk of electric shock. Only load the drum with laundry. Check the contents before you switch the dryer on.

Do not use the dryer if the laundry has been in contact with solvents, oil, wax, grease or paint (e.g. hair styling products, nail varnish remover, stain remover, cleaning solvent, etc.) Risk of fire/explosion. Dust (e.g. coal dust, flour) poses a danger: Do not use the dryer Risk of explosion Do not put laundry containing foamed material/rubber in the dryer elastic material may be destroyed and the dryer be damaged due to possible deformation of the foamed material. When cleaning the fluff filter, make sure that no foreign material (down or filling material) gets into the air duct opening. If necessary, clean the drum beforehand with a vacuum cleaner. If foreign material should still get into the air duct call the after-sales service Risk of fire/explosion.

Switch off the dryer once the programme has ended. The water from condensation is not drinking water and may be contaminated with fluff. Do not use the dryer if it is defective or if you suspect that it is. Repairs must only be carried out by the after-sales service. Do not use the dryer if the mains cable is defective. To avoid danger, only have the defective mains cable replaced by the after-sales service. Always pull the mains plug out of the socket before changing the bulb for the interior light Risk of electric shock. Only use genuine spare parts and accessories for safety reasons. Pull out the appliance plug, then cut off the mains cable from the appliance. Dispose of at a municipal waste disposal facility.

Heat exchangers contain a fluorinated greenhouse gas covered by the Kyoto protocol (R134a) dispose of in a proper manner. Capacity: 0.22 kg. Packaging: Keep all packaging out of reach of babies and children Risk of suffocation.



[You're reading an excerpt. Click here to read official BOSCH](#)

[WTW863S0GB user guide](#)

<http://yourpdfguides.com/dref/4545290>

*All materials are environmentally sound and can be reused.*

*Dispose of in an environmentally-responsible manner. Installation Mains connection Operation Drying result is not satisfactory (laundry feels too damp).*

*Drying time too long. -- Defect --- Spare parts Disposal ----- The humidity in the room increases significantly. Power failure.*

*Remove laundry from the dryer immediately and spread out. This allows the heat to dissipate. Other intermittent noises Not an error. and vibrations. Normal noises page 11. @@seconds. Push the condensation container all the way in. Not an error. Normal noises page 11. @@@@Close the cover cap.*

*Never operate the dryer without a cover cap. 12 13 Dryer en Instruction manual .*



[You're reading an excerpt. Click here to read official BOSCH](#)

[WTW863S0GB user guide](#)

<http://yourpdfguides.com/dref/4545290>