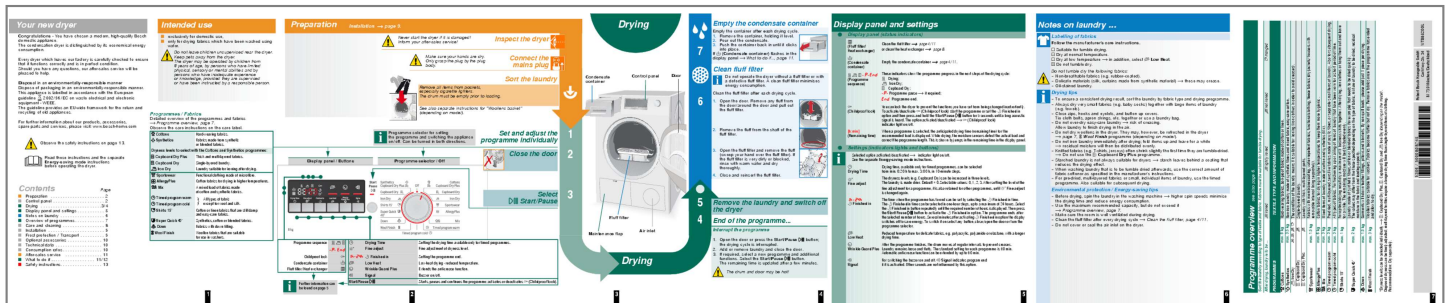




Your PDF Guides

You can read the recommendations in the user guide, the technical guide or the installation guide for BOSCH WTB-86200-LOGIXX-8. You'll find the answers to all your questions on the BOSCH WTB-86200-LOGIXX-8 in the user manual (information, specifications, safety advice, size, accessories, etc.). Detailed instructions for use are in the User's Guide.

User manual BOSCH WTB-86200-LOGIXX-8
User guide BOSCH WTB-86200-LOGIXX-8
Operating instructions BOSCH WTB-86200-LOGIXX-8
Instructions for use BOSCH WTB-86200-LOGIXX-8
Instruction manual BOSCH WTB-86200-LOGIXX-8



[You're reading an excerpt. Click here to read official BOSCH WTB-86200-LOGIXX-8 user guide](http://yourpdfguides.com/dref/5450681)
<http://yourpdfguides.com/dref/5450681>

Manual abstract:

@@@Single-layered laundry. Laundry with thick, multi-layered parts. @@@Mixed items of laundry made of cotton and synthetics (Mix). Pre-dried, multi-layered, sensitive fabrics made of acrylic fibres, or separate small items of laundry. Also for subsequent drying. All types of fabrics. For freshening up or airing of items of laundry that have been worn for a short period of time. For optimal drying result dry a maximum of 5 business shirts together. After drying, iron clothes or hang them out and leave for a while. The remaining moisture will be distributed evenly.

Laundry made of synthetic fibres, cotton or blended fabrics (for example) that needs to be dried quickly. The values may differ from the those specified depending on the type of fabric, mixture of laundry to be dried, residual moisture in the fabric and loading capacity. Garments with down feather fillings, pillows and blankets. By non quilt loads - please add just 1 piece per drying. Woollen fabrics suitable for washers.

Fabrics become fluffier but not dry. Remove fabrics once the programme has ended and allow to dry. Installation page 9. Never start the dryer if it is damaged! Inform your after-sales service! @@@@For further information about our products, accessories, spare parts and services, please visit: www.bosch-home.

com Make sure your hands are dry. Only grasp the plug by the plug body. Connect the mains plug Sort the laundry Condensate container Control panel Door Clean fluff filter Do not operate the dryer without a fluff filter or with a defective fluff filter. A clean fluff filter minimises energy consumption. Clean the fluff filter after each drying cycle. (Condensate container) - Empty the condensate container page 4/11. Low Heat. Programmes / Fabrics Detailed overview of the programmes and fabrics Programme overview, page 7. Observe the care instructions on the care label. Cottons Hard-wearing fabrics.

Synthetics Fabrics made from synthetic or blended fabrics. @@ Cupboard Dry Single-layered laundry. Iron Dry Laundry suitable for ironing after drying. Sportswear Functional clothing made of microfibre. AllergyPlus Cotton fabrics for drying in higher temperatures. Mix A mixed load of fabrics made of cotton and synthetic fabrics. Timed program warm All types of fabric except for wool and silk. @@Synthetics, cotton or blended fabrics. Fabrics with down filling. Woollen fabrics that are suitable for use in washers. Programme sequence -- (Childproof lock) Read these instructions and the separate Energy-saving mode instructions before operating the dryer. Close the door Display panel / Buttons Programme selector / Off 2 Drying Time Fine adjust 4. Close and reinsert the fluff filter. Contents Preparation .

.....
..... Control panel
..... Drying ...
.....
.....
... Display panel and settings . Notes on laundry
.. Overview of programmes . Care and cleaning
.. Installation
.....
.... Frost protection / Transport Optional accessories Technical data .
..... Consumption rates .
.....
.. After-sales service
.. What to do if
..... Safety instructions.
.....
.....
.....
.....
.....
.....
.....
.....
.. Fluff filter Air inlet max. 1.

5 kg max. 8 kg max. 3.5 kg max. 1.5 kg End of the programme... Interrupt the programme 1. @@2.

Add or remove laundry and close the door. 3. If required, select a new programme and additional functions. Select the Start/Pause button. The remaining time is updated after a few minutes.

The drum and door may be hot! Low Heat Programme overview Childproof lock Condensate container Fluff filter/Heat exchanger - Finished in Setting the programme end. Low-heat drying - reduced temperature. Extends the anti-crease function. Buzzer on/off. Starts, pauses and continues the programme; activates or deactivates Sportswear Further information can be found on page 5 (Childproof lock).

1 2 3 4 5 6 * * Wool Finish Shirts 15' Down Low Heat Wrinkle Guard Plus Signal Start/Pause Signal PROGRAMMES Super Quick 40' Drying For switching the buzzer on and off. Signal indicates program end if it is activated. Other sounds are not influenced by this option. AllergyPlus Mix Timed program warm Timed program cold Cottons Synthetics Iron Dry . Cupboard Dry : Cupboard Dry Plus Page

. 2 2 ..
... 3/4 .
.....
. 5 6 ..
..... 7

.. 8 ...
.... 9 .
..... 9

.. 10 10 . .
.... 10 .
.....

11 . . . 11/12 13 Select Start/Pause 3 The dryness levels (e.

g. Cupboard Dry) can be increased in three levels. The laundry is made drier. Default = 0. Selectable values: 0, 1, 2, 3. After setting the level of the fine adjustment for a programme, it is also retained for other programmes, until Fine adjust is changed again. The time when the programme has to end can be set by selecting the Finished in time. The Finished in time can be selected in one-hour steps, up to a maximum of 24 hours. Select the Finished in button repeatedly until the required number of hours is displayed. Then press button to activate the Finished in option.

The programme ends after the Start/Pause the selected number of hours. Several minutes after activating Finished in option the display switches off to save energy. To switch it on select any button, close/open the door or turn the programme selector. Reduced temperature for delicate fabrics, e.g.

polyacrylic, polyamide or elastane, with a longer drying time. Environmental protection / Energy-saving tips – Before drying, spin the laundry in the washing machine higher spin speeds minimise the drying time and reduce energy consumption. – Use the maximum recommended capacity, but do not exceed it Programme overview, page 7. – Make sure the room is well ventilated during drying. – Clean the fluff filter after every drying cycle Clean the fluff filter, page 4/11.

– Do not cover or seal the air inlet on the dryer. 5 4 Remove the laundry and switch off the dryer - Finished in see also page 6. 3. @@ Settings (indicators lights and buttons) Selected option activated/deactivated indicator light on/off. See the separate Energy-saving mode instructions. Drying time, available only for timed programmes, can be selected from min. 0:20 h to max. 3:00 h, in 10-minute steps. TEXTILE TYPE AND INFORMATION Observe the safety instructions on page 13. max.

6 kg max. 3 kg max. 3 kg max. 3 kg max. 1 kg Maintenance flap Drying Time Fine adjust Setting the drying time available only for timed programmes. Fine adjustment of dryness level. After the programme finishes, the drum moves at regular intervals to prevent creases. Wrinkle Guard Plus Laundry remains loose and fluffy. The standard setting for each programme is 60 min. Automatic anti-crease function can be extended by up to 60 min.

max. 2 kg max. 3 kg 9306 / 9000808745 Programme selector for setting the programme and switching the appliance on/off. Can be turned in both directions. Set and adjust the programme individually 1 [h:min] (Remaining time) When a programme is selected, the anticipated drying time (remaining time) for the recommended load is displayed.

While drying, the moisture sensors detect the actual load and correct the programme length.



[You're reading an excerpt. Click here to read official BOSCH](#)

[WTB-86200-LOGIXX-8 user guide](#)

<http://yourpdfguides.com/dref/5450681>

This is shown by jumps in the remaining time in the display panel. Sort the laundry according to type of textile and fabric. Fabrics must be suitable for tumble drying. After drying, laundry is to be .

... ironed lightly ironed 2. Remove the fluff from the shaft of the fluff filter. *808745* 7 6 1. Open the door. Remove any fluff from the door/around the door and pull out the fluff filter. You can lock the dryer to prevent the functions you have set from being changed inadvertently. To activate/deactivate (Childproof lock) start the programme or set the Finished in button for 5 seconds until a long acoustic option and then press and hold the Start/Pause signal is heard. The option activated/deactivated (Childproof lock) indicator light on/off.

– To ensure a consistent drying result, sort the laundry by fabric type and drying programme. – Always dry very small fabrics (e.g. baby socks) together with large items of laundry (e.g. towels). – Close zips, hooks and eyelets, and button up covers. Tie cloth belts, apron strings, etc. together or use a laundry bag. – Do not over-dry easy-care laundry risk of creasing.

Allow laundry to finish drying in the air. – Do not dry woollens in the dryer. They may, however, be refreshed in the dryer page 7, Wool Finish programme (depending on model). – Do not iron laundry immediately after drying; fold items up and leave for a while residual moisture will then be distributed evenly. – Knitted fabrics (e.

g. T-shirts, jerseys) often shrink slightly the first time they are tumble-dried. Do not use the : Cupboard Dry Plus programme. – Starched laundry is not always suitable for dryers starch leaves behind a coating that reduces the drying effect. – When washing laundry that is to be tumble dried afterwards, use the correct amount of fabric softener as specified in the manufacturer's instructions.

– For pre-dried, multi-layered fabrics or small, individual items of laundry, use the timed programme. Also suitable for subsequent drying. not ironed Drying tips *Dryness levels can be selected individually : Cupboard Dry Plus, . Cupboard Dry and Iron Dry (depending on the model). Degree of dryness can be finely adjusted; multi-layered textiles require a longer drying time than single-layered items of clothing. Recommendation: Dry separately. Remove all items from pockets, especially cigarette lighters. The drum must be empty prior to loading. (Programme sequence) These indicators show the programme progress in the next steps of the drying cycle: Drying; Iron Dry; Cupboard Dry; - - Programme pause if required; Programme end. Do not tumble dry the following fabrics: – Non-breathable fabrics (e.

g. rubber-coated). – Delicate materials (silk, curtains made from synthetic material) – Oil-stained laundry. these may crease. Robert Bosch Hausgeräte GmbH Carl-Wery-Str. 34 81739 München/Deutschland 7 (Fluff filter/ Heat exchanger) Suitable for tumble drying. Dry at normal temperature. Dry at low temperature in addition, select Do not tumble dry. mangled Congratulations - You have chosen a modern, high-quality Bosch domestic appliance. The condensation dryer is distinguished by its economical energy consumption.

exclusively for domestic use, only for drying fabrics which have been washed using water. Do not leave children unsupervised near the dryer. Keep pets away from the dryer. The dryer may be operated by children from 8 years of age, by persons who have limited physical, sensory or mental abilities and by persons who have inadequate experience or knowledge, provided they are supervised or have been instructed by a responsible person. Inspect the dryer Empty the container after each drying cycle.

1. Remove the container, holding it level. 2. Pour out the condensate. 3.

Push the container back in until it clicks into place. If (Condensate container) flashes in the display panel What ctric shock. Never pull the appliance plug out of the socket by its cable. Risk of electric shock. Do not damage the mains lead Only load the drum with laundry. Check the contents before you switch the dryer on. Do not use the dryer if the laundry has been in contact with solvents, oil, wax, grease or paint (e.g. hair styling products, nail varnish remover, stain remover, cleaning solvent, etc.) Risk of fire/explosion.

Dust (e.g. coal dust, flour) poses a danger: Do not use the dryer Risk of explosion. Do not put laundry containing foamed material/rubber in the dryer elastic material may be destroyed and the dryer be damaged due to possible deformation of the foamed material. When cleaning the fluff filter, make sure that no foreign material (down or filling material) gets into the air duct opening. If necessary, clean the drum beforehand with a vacuum cleaner. If foreign material should still get into the air duct call the after-sales service Risk of fire/explosion. Light things, such as long hair, may be sucked into the air inlet of the dryer Risk of injury. Switch off the dryer once the programme has ended. The water from condensation is not drinking water and may be contaminated with fluff. Do not use the dryer if it is defective or if you suspect that it is. Repairs must only be carried out by the after-sales service. Do not use the dryer if the mains cable is defective. To avoid danger, only have the defective mains cable replaced by the after-sales service. For safety reasons, you must only use genuine spare parts and accessories.

Pull out the appliance plug, then cut off the mains cable from the appliance. Dispose of the appliance at a municipal waste disposal site. Packaging: Keep all packaging out of reach of babies and children Risk of suffocation. All materials are environmentally sound and can be reused. Dispose of them in an environmentally-responsible manner.

Wipe clean with a soft, damp cloth. Do not clean with a water jet. Remove detergent and cleaning agent residue immediately. During drying, water may occasionally accumulate between the window and the seal. This does not affect the proper operation of your dryer. Connection fittings for condensation outlet The condensation is conveyed directly via a hose. Platform WMZ 20500 For easier loading and unloading. The basket contained in the drawer can be used to carry the laundry. Washer-dryer stack connection set WTZ 11410 The dryer can be placed on top of a suitable washing machine with the same width and depth to save space. The dryer must be fastened to the washing machine using this connection set.

WTZ 11400: with pull-out worktop. Water is leaking out. The door opens by itself. Creasing. Heat exchanger The heat exchanger requires cleaning once a month, however this varies depending on how frequently the dryer is used. Allow the dryer to cool down and place an absorbent cloth under the maintenance flap. Residual water may escape. 1. Unlock the maintenance flap and open completely. 2.

Turn both locking levers towards each other. 1. Setting up the dryer – The mains plug must always be accessible. – Ensure that the appliance is placed on a clean, level and firm surface.



[You're reading an excerpt. Click here to read official BOSCH
WTB-86200-LOGIXX-8 user guide
http://yourpdfguides.com/dref/5450681](http://yourpdfguides.com/dref/5450681)

– Do not obstruct the air inlet on the dryer.

– Keep the area around the dryer clean. – Level the dryer using the threaded feet and a spirit level. Never remove the threaded feet! Do not install the dryer behind a door or sliding door which could prevent or obstruct the dryer door from opening. This will prevent children from locking themselves in and risking their lives. Take all accessory parts out of the drum.

The drum must be empty. Technical data Dimensions (DxWxH) Weight Max. capacity Condensation container Connection voltage Connected load Fuse protection Ambient temperature Product number Production number 60 x 60 x 85 cm (height adjustable) approx. 45 kg 8 kg 4.2 l 220-240 V 2100-2800 W 10 A / 16 A 5-35°C Inside of door Product number Production number Drying result is not satisfactory (laundry feels too damp). 3. Pull out the cap. Trust the expertise of the manufacturer. Contact us for assistance. In this way, you can rest assured that the repair will be carried out by trained service technicians using original spare parts.

Fine adjust for the dryness levels page 5. Fine layer of limescale on the humidity sensors Clean the moisture sensors page 8. What to do if ... Turn the programme selector to Off and remove the mains plug from the socket. The Start/Pause does not light up, indicator light Mains plug plugged in? Programme selected? Check the socket fuse. Energy-saving mode is activated Energy-saving mode instructions. see the separate One or more indicator lights are flashing.

Drying time too long. 4. Remove the heat exchanger. Clean and level Make sure that the air inlet remains unobstructed Programme termination, e.g. tank full, mains power supply failure, door open or maximum drying time reached? Clean the fluff filter under running water Insufficient supply of air Air inlet possibly blocked Clear inlet page 4/11. page 9. Ventilate the Ensure that air can circulate. Operation Take care not to damage the heat exchanger. When cleaning, use water only.

Do not use hard or sharp-edged objects. 5. Rinse the heat exchanger and the cap on all sides with a jet of water to completely remove all of the fluff. 6. Remove any fluff from the seals on the dryer and heat exchanger. 7. Allow to drip dry fully. 8. First insert the heat exchanger, then the cap. 9.

Turn back both locking levers and close the maintenance flap until it locks closed. 2. 3. page 13. – Connect to an AC earthed socket. If in doubt have the socket checked by a specialist. – The mains voltage and the voltage shown on the rating plate (page 10) must be the same. – The connected load and necessary fuse protection are specified on the rating plate. Converting the installed load Note the fuse protection of the socket (10/16 Amps.).

1. Turn the programme selector to Off. 2. Press and hold the Fine adjust button. 3.

Turn the programme selector to Cottons Cupboard Dry Plus; wait until the recent setting =10A or =16A. appears in the display: 4. Press the Fine adjust button to change the settings. 5. Turn the programme selector to Off.

For mains connection, see Safety instructions The rating plate can be found on the back of the dryer. Drum interior light (depending on model): The drum lights up after the door is opened and after the programme starts, and switches off automatically. (The value on the label is achieved at the maximum heat setting.) Consumption rates Fabrics/programmes Cottons 8 kg . Cupboard Dry* Residual moisture in the fabrics after spinning 1400 U/min 1000 U/min 800 U/min 1400 U/min 1000 U/min 800 U/min (50%) (60%) (70%) (50%) (60%) (70%) Drying time** 10 A 140 min 158 min 176 min 116 min 135 min 153 min 16 A 108 min 126 min 144 min 86 min 103 min 121 min Energy consumption** 10 A 3.74 kWh 4.49 kWh 5.17 kWh 2.24 kWh 3.44 kWh 3.

86 kWh 16 A 3.74 kWh 4.49 kWh 5.17 kWh 2.24 kWh 3.44 kWh 3.86 kWh The display panel light and indicator lights (depending on model) go out and the Start/Pause indicator light flashes. The display panel switches off. The (Condensate container) indicator light flashes. Ambient temperature higher than 35°C room.

The appliance goes into the sleep mode after activating Finished in option page 5. Empty the condensate container page 4. button to reset the displayed Press the Start/Pause indication and then press the Start/Pause button again to restart the appliance if necessary. If featured, check the hose for condensation outlet. Clean the fluff filter page 4.

button to reset the displayed Press the Start/Pause indication and then press the Start/Pause button again to restart the appliance if necessary. Clean the heat exchanger page 8. Start/Pause button selected? Door closed? Programme set? Clean the fluff filter and heat exchanger page 4,8/11. page 9. Check the installation conditions Switch off, allow to cool, switch back on and restart the programme.

Remove the laundry from the dryer immediately and spread out. This allows the heat to dissipate. Be careful as the door, the drum and the laundry may be hot. Power failure. Iron Dry* --- Defect --- Spare parts Disposal ---- Dryer Moisture sensors The dryer is equipped with stainless steel moisture sensors. Moisture sensors measure the moisture level of the laundry. After sustained, repeated operation, a fine layer of limescale may form on the moisture sensors. 1. Open the door. 2.

Clean the moisture sensors with a damp sponge which has a rough surface. Do not use steel wool or abrasive agents! Frost protection / Transport Preparation 1. 2. 3. 4. Do not operate the dryer if there is a risk of frost. page 4/11. Empty the condensate container Select any programme using the programme selector. button condensation is pumped into the container. Press the Start/Pause Wait several minutes or until the dryer stops, and then empty the condensate container again.

5. Turn the programme selector to Off. 800 U/min (40%) 52 min 46 min 1.42 kWh 1.42 kWh 600 U/min (50%) 65 min 56 min 1.

74 kWh 1.74 kWh * Programme setting for testing in accordance with applicable standard DIN EN61121. ** The values may differ from those specified, depending on the type of fabric, composition of laundry to be dried, residual moisture in the fabric and the amount of laundry being loaded. Synthetics 3.5 kg .

Cupboard Dry* (Fluff filter/Heat exchanger) indicator light flashes. Dryer does not start. en Instruction manual 8 9 10 11 12 13 Your new dryer Congratulations - You have chosen a modern, high-quality Bosch domestic appliance. The condensation dryer is distinguished by its economical energy consumption. @@@@ Do not leave children unsupervised near the dryer. Keep pets away from the dryer. @@ Observe the care instructions on the care label. Cottons Hard-wearing fabrics. Synthetics Fabrics made from synthetic or blended fabrics. @@.

Cupboard Dry Single-layered laundry. Iron Dry Laundry suitable for ironing after drying. Sportswear Functional clothing made of microfibre. AllergyPlus Cotton fabrics for drying in higher temperatures. Mix A mixed load of fabrics made of cotton and synthetic fabrics.



[You're reading an excerpt. Click here to read official BOSCH WTB-86200-LOGIXX-8 user guide](http://yourpdfguides.com/dref/5450681)
<http://yourpdfguides.com/dref/5450681>

Timed program warm All types of fabric except for wool and silk. @@Synthetics, cotton or blended fabrics. Fabrics with down filling. Woollen fabrics that are suitable for use in washers. @@@@.

.....
.....
... Control panel
..... Drying ...
.....
.....
..... Display panel and settings

Notes on laundry
. Overview of programmes
. Care and cleaning
..... Installation

.....
.. Frost protection / Transport ...
Optional accessories
... Technical data

..... Consumption rates
.....
. After-sales service
..... What to do if

.....
. Safety instructions. ...
.....
.. Page 2 .

..... 2
. 3/4 ...
.... 5 .
..... 6

... 7
8
.. 9 ...
.... 9

10 10
.. 10 ...
... 11 ..

. 11/12 @@The drum must be empty prior to loading. @@@@1. Remove the container, holding it level.

2. Pour out the condensate. 3. Push the container back in until it clicks into place. @@ur after-sales service! Make sure your hands are dry. @@A clean fluff filter minimises energy consumption. Clean the fluff filter after each drying cycle. 6 1 2 1. Open the door. @@@@@@@4.

@@@2. Add or remove laundry and close the door. 3. If required, select a new programme and additional functions. Select the Start/Pause button. The remaining time is updated after a few minutes. The drum and door may be hot! Maintenance flap Setting the drying time available only for timed programmes. Fine adjustment of dryness level. Setting the programme end. Low-heat drying - reduced temperature.

Extends the anti-crease function. Buzzer on/off. Starts, pauses and continues the programme; activates or deactivates Drying (Childproof lock). 3 4 Display panel and settings Display panel (status indicators) (Fluff filter/ Heat exchanger) (Condensate container) - Notes on laundry ... Labelling of fabrics Follow the manufacturer's care instructions. Suitable for tumble drying. Dry at normal temperature. Dry at low temperature in addition, select Do not tumble dry.

page 4/11 Clean the fluff filter page 8. or clean the heat exchanger Empty the condensate container page 4/11. Low Heat. (Programme sequence) These indicators show the programme progress in the next steps of the drying cycle: Drying; Iron Dry; Cupboard Dry; - - Programme pause if required; Programme end. You can lock the dryer to prevent the functions you have set from being changed inadvertently. To activate/deactivate (Childproof lock) start the programme or set the Finished in option and then press and hold the Start/Pause button for 5 seconds until a long acoustic signal is heard. The option activated/deactivated (Childproof lock) indicator light on/off. When a programme is selected, the anticipated drying time (remaining time) for the recommended load is displayed. While drying, the moisture sensors detect the actual load and correct the programme length. This is shown by jumps in the remaining time in the display panel.

Do not tumble dry the following fabrics: - Non-breathable fabrics (e.g. rubber-coated). - Delicate materials (silk, curtains made from synthetic material) - Oil-stained laundry. these may crease.

Drying tips - To ensure a consistent drying result, sort the laundry by fabric type and drying programme. - Always dry very small fabrics (e.g. baby socks) together with large items of laundry (e.g.

towels). - Close zips, hooks and eyelets, and button up covers. Tie cloth belts, apron strings, etc. together or use a laundry bag. - Do not over-dry easy-care

laundry risk of creasing. Allow laundry to finish drying in the air. – Do not dry woollens in the dryer. They may, however, be refreshed in the dryer page 7, Wool Finish programme (depending on model). – Do not iron laundry immediately after drying; fold items up and leave for a while residual moisture will then be distributed evenly. – Knitted fabrics (e.

g. T-shirts, jerseys) often shrink slightly the first time they are tumble-dried. Do not use the : Cupboard Dry Plus programme. – Starched laundry is not always suitable for dryers starch leaves behind a coating that reduces the drying effect. – When washing laundry that is to be tumble dried afterwards, use the correct amount of fabric softener as specified in the manufacturer's instructions. – For pre-dried, multi-layered fabrics or small, individual items of laundry, use the timed programme. Also suitable for subsequent drying. (Childproof lock) [h:min] (Remaining time) Settings (indicators lights and buttons) Selected option activated/deactivated indicator light on/off. See the separate Energy-saving mode instructions. Drying Time Fine adjust Drying time, available only for timed programmes, can be selected from min.

0:20 h to max. 3:00 h, in 10-minute steps. The dryness levels (e.g. Cupboard Dry) can be increased in three levels.

The laundry is made drier. Default = 0. Selectable values: 0, 1, 2, 3. After setting the level of the Fine adjust fine adjustment for a programme, it is also retained for other programmes, until is changed again. The time when the programme has to end can be set by selecting the Finished in time. The Finished in time can be selected in one-hour steps, up to a maximum of 24 hours. Select the Finished in button repeatedly until the required number of hours is displayed. Then press button to activate the Finished in option. The programme ends after the Start/Pause the selected number of hours. Several minutes after activating Finished in option the display switches off to save energy. To switch it on select any button, close/open the door or turn the programme selector. Reduced temperature for delicate fabrics, e.g. polyacrylic, polyamide or elastane, with a longer drying time. Environmental protection / Energy-saving tips – Before drying, spin the laundry in the washing machine higher spin speeds minimise the drying time and reduce energy consumption.

– Use the maximum recommended capacity, but do not exceed it Programme overview, page 7. – Make sure the room is well ventilated during drying. Clean the fluff filter, page 4/11. – Clean the fluff filter after every drying cycle – Do not cover or seal the air inlet on the dryer. - Finished in Low Heat After the programme finishes, the drum moves at regular intervals to prevent creases. Wrinkle Guard Plus Laundry remains loose and fluffy. The standard setting for each programme is 60 min. Automatic anti-crease function can be extended by up to 60 min. Signal For switching the buzzer on and off. Signal indicates program end if it is activated.

Other sounds are not influenced by this option. 5 6 Programme overview see also page 6. not ironed mangled Sort the laundry according to type of textile and fabric. Fabrics must be suitable for tumble drying. After drying, laundry is to be .

.. ironed lightly ironed PROGRAMMES * * Cottons Synthetics Iron Dry . Cupboard Dry : Cupboard Dry Plus Sportswear AllergyPlus Mix Timed program warm Timed program cold Shirts 15' Super Quick 40' Down Wool Finish max. 3 kg max.

1.5 kg max. 2 kg max. 1 kg max. 6 kg max.



[You're reading an excerpt. Click here to read official BOSCH](http://yourpdfguides.com/dref/5450681)

[WTB-86200-LOGIXX-8 user guide](http://yourpdfguides.com/dref/5450681)

<http://yourpdfguides.com/dref/5450681>

3 kg max. 3 kg max. 3 kg max. 1.5 kg max.

8 kg max. 3.5 kg **TEXTILE TYPE AND INFORMATION** Hard-wearing fabrics, boil-proof fabrics made of cotton or linen. @@@@Single-layered laundry. Laundry with thick, multi-layered parts. @@@@Mixed items of laundry made of cotton and synthetics (Mix). Pre-dried, multi-layered, sensitive fabrics made of acrylic fibres, or separate small items of laundry. Also for subsequent drying. All types of fabrics. For freshening up or airing of items of laundry that have been worn for a short period of time.

For optimal drying result dry a maximum of 5 business shirts together. After drying, iron clothes or hang them out and leave for a while. The remaining moisture will be distributed evenly. Laundry made of synthetic fibres, cotton or blended fabrics (for example) that needs to be dried quickly. The values may differ from the those specified depending on the type of fabric, mixture of laundry to be dried, residual moisture in the fabric and loading capacity.

Garments with down feather fillings, pillows and blankets. By non quilt loads - please add just 1 piece per drying. Woollen fabrics suitable for washers.

Fabrics become fluffier but not dry. Remove fabrics once the programme has ended and allow to dry.

*Dryness levels can be selected individually : Cupboard Dry Plus, . Cupboard Dry and Iron Dry (depending on the model). Degree of dryness can be finely adjusted; multi-layered textiles require a longer drying time than single-layered items of clothing. Recommendation: Dry separately. 9306 / 9000808745

808745 7 Robert Bosch Hausgeräte GmbH Carl-Wery-Str. 34 81739 München/Deutschland WTB86200IL Care and cleaning Dryer housing, control panel
----- Only when switched off! Installation – Scope of delivery: dryer, operating and installation instructions, basket for woollens (depending on the model).

– Check the dryer for transport damage. – The dryer is very heavy. Do not attempt to lift it on your own. – Be careful to avoid sharp edges.

– Do not lift the dryer by protruding parts (e.g. the door) - risk of breakage. – Do not set up in a room that is susceptible to frost. Freezing water may cause damage. – If in doubt, have the appliance connected by a specialist. Wipe clean with a soft, damp cloth. Do not clean with a water jet. Remove detergent and cleaning agent residue immediately. During drying, water may occasionally accumulate between the window and the seal.

This does not affect the proper operation of your dryer. Heat exchanger The heat exchanger requires cleaning once a month, however this varies depending on how frequently the dryer is used. Allow the dryer to cool down and place an absorbent cloth under the maintenance flap. Residual water may escape. 1. Unlock the maintenance flap and open completely. 2. Turn both locking levers towards each another. 1. Setting up the dryer – The mains plug must always be accessible.

– Ensure that the appliance is placed on a clean, level and firm surface. – Do not obstruct the air inlet on the dryer. – Keep the area around the dryer clean. – Level the dryer using the threaded feet and a spirit level. Never remove the threaded feet! Do not install the dryer behind a door or sliding door which could prevent or obstruct the dryer door from opening. This will prevent children from locking themselves in and risking their lives. Take all accessory parts out of the drum. The drum must be empty. 3. Pull out the cap.

4. Remove the heat exchanger. Clean and level Make sure that the air inlet remains unobstructed Take care not to damage the heat exchanger. When cleaning, use water only. Do not use hard or sharp-edged objects. 5. Rinse the heat exchanger and the cap on all sides with a jet of water to completely remove all of the fluff. 6. Remove any fluff from the seals on the dryer and heat exchanger. 7.

Allow to drip dry fully. 8. First insert the heat exchanger, then the cap. 9. Turn back both locking levers and close the maintenance flap until it locks closed.

2. For mains connection, 3. see Safety instructions page 13. – Connect to an AC earthed socket. If in doubt have the socket checked by a specialist.

– The mains voltage and the voltage shown on the rating plate (page 10) must be the same. – The connected load and necessary fuse protection are specified on the rating plate. Converting the installed load Note the fuse protection of the socket (10/16 Amps.). 1. Turn the programme selector to Off. 2. Press and hold the Fine adjust button. 3. Turn the programme selector to Cottons Cupboard Dry Plus; wait until the recent setting =10A or =16A.

appears in the display: 4. Press the Fine adjust button to change the settings. 5. Turn the programme selector to Off. Moisture sensors The dryer is equipped with stainless steel moisture sensors. Moisture sensors measure the moisture level of the laundry. After sustained, repeated operation, a fine layer of limescale may form on the moisture sensors. 1. Open the door. 2.

Clean the moisture sensors with a damp sponge which has a rough surface. Do not use steel wool or abrasive agents! Frost protection / Transport Preparation 1. 2. 3. 4.

Do not operate the dryer if there is a risk of frost. page 4/11. Empty the condensate container Select any programme using the programme selector. Press the Start/Pause button condensation is pumped into the container. Wait several minutes or until the dryer stops, and then empty the condensate container again.

5. Turn the programme selector to Off. 8 9 Optional accessories (order from the after-sales service using the order number, depending on the model) WTZ 1110 After-sales service If you cannot rectify the fault yourself (e.g. switching off/on) What to do if..., page 11/12, please contact our after-sales service. We will always find an appropriate solution and avoid unnecessary visits by engineers. The contact details of your local after-sales service can be found in the enclosed after-sales service directory.

– GB 0844 8928979 (Calls from a BT landline will be charged at up to 3 pence per minute. A call set-up fee of up to 6 pence may apply.) – IE 01450 2655 (0.03 € per minute at peak. Off peak 0.0088 € per minute.) Please provide the after-sales service the product number (E no.) and the production number (FD) of the appliance. You can find this information: inside the door* / in the opened service flap* and on the rear of the appliance. *depending on the model Connection fittings for condensation outlet The condensation is conveyed directly via a hose.

Platform WMZ 20500 For easier loading and unloading. The basket contained in the drawer can be used to carry the laundry. Washer-dryer stack connection set WTZ 11410 The dryer can be placed on top of a suitable washing machine with the same width and depth to save space. The dryer must be fastened to the washing machine using this connection set. WTZ 11400: with pull-out worktop.

Technical data Dimensions (DxWxH) Weight Max. capacity Condensation container Connection voltage Connected load Fuse protection Ambient temperature Product number Production number 60 x 60 x 85 cm (height adjustable) approx.



[You're reading an excerpt. Click here to read official BOSCH
WTB-86200-LOGIXX-8 user guide
http://yourpdfguides.com/dref/5450681](http://yourpdfguides.com/dref/5450681)

45 kg 8 kg 4.2 l 220-240 V 2100-2800 W 10 A / 16 A 5-35°C Inside of door Product number Production number Trust the expertise of the manufacturer.
Contact us for assistance.

In this way, you can rest assured that the repair will be carried out by trained service technicians using original spare parts. What to do if ... Turn the programme selector to Off and remove the mains plug from the socket. The Start/Pause does not light up. indicator light Mains plug plugged in? Programme selected? Check the socket fuse. Energy-saving mode is activated Energy-saving mode instructions. see the separate The rating plate can be found on the back of the dryer. Drum interior light (depending on model): The drum lights up after the door is opened and after the programme starts, and switches off automatically.

(The value on the label is achieved at the maximum heat setting.) Consumption rates Fabrics/programmes Cottons 8 kg . Cupboard Dry* Residual moisture in the fabrics after spinning 1400 U/min 1000 U/min 800 U/min 1400 U/min 1000 U/min 800 U/min (50%) (60%) (70%) (50%) (60%) (70%) Drying time** 10 A 140 min 158 min 176 min 116 min 135 min 153 min 16 A 108 min 126 min 144 min 86 min 103 min 121 min Energy consumption** 10 A 3.74 kWh 4.49 kWh 5.17 kWh 2.24 kWh 3.44 kWh 3.86 kWh 16 A 3.74 kWh 4.

49 kWh 5.17 kWh 2.24 kWh 3.44 kWh 3.86 kWh The display panel light and indicator lights (depending on model) go out and the Start/ Pause indicator light flashes.

The display panel switches off. The (Condensate container) indicator light flashes. The appliance goes into the sleep mode after activating Finished in option page 5. Empty the condensate container page 4. Press the Start/Pause button to reset the displayed indication and then press the Start/Pause button again to restart the appliance if necessary.

If featured, check the hose for condensation outlet. Clean the fluff filter page 4. Press the Start/Pause button to reset the displayed indication and then press the Start/Pause button again to restart the appliance if necessary. Clean the heat exchanger page 8. Start/Pause button selected? Door closed? Programme set? Iron Dry* 800 U/min (40%) 52 min 46 min 1.42 kWh 1.42 kWh 600 U/min (50%) 65 min 56 min 1.74 kWh 1.74 kWh * Programme setting for testing in accordance with applicable standard DIN EN61121. ** The values may differ from those specified, depending on the type of fabric, composition of laundry to be dried, residual moisture in the fabric and the amount of laundry being loaded.

Synthetics 3.5 kg . Cupboard Dry* (Fluff filter/Heat exchanger) indicator light flashes. Dryer does not start. 10 11 What to do if ... Programme terminates shortly after starting. Ambient temperature greater than 5°C? Is the appliance loaded with the laundry? Load too small for selected programme?/Use timed programme page 6/7. Loaded laundry dry? Make sure the dryer is level.

Clean the heat exchanger seal. Push the door closed until you hear it engage. Laundry load exceeded? Remove articles of clothing immediately after the end of the programme, hang up and pull into shape. Unsuitable programme selected page 7. Warm laundry feels damper than it really is.

The selected programme does not suit the load. Use another drying programme or, in addition, select the timed programme page 7. Use + Safety instructions Emergency ONLY use the dryer...

The dryer must NEVER... Hazards ----- Installation Mains connection ----- Pull the appliance plug out of the socket immediately or disconnect the fuse. in rooms inside the house. to dry fabrics. be used for purposes other than those described above. be modified in terms of its technology or properties. @@Do not leave children unsupervised near the dryer. Keep pets away from the dryer.

@@Do not lean or sit on the door Risk of tipping. Secure loose cables Risk of tripping. Do not operate a dryer if there is a risk of frost. @@The cable cross-section must be sufficient. @@Do not use multiple plugs/connectors and/or extension cables. Do not touch or hold the appliance plug with wet hands Risk of electric shock. Never pull the appliance plug out of the socket by its cable. Risk of electric shock. Do not damage the mains lead Only load the drum with laundry. Check the contents before you switch the dryer on.

Do not use the dryer if the laundry has been in contact with solvents, oil, wax, grease or paint (e.g. hair styling products, nail varnish remover, stain remover, cleaning solvent, etc.) Risk of fire/explosion. Dust (e.

g. coal dust, flour) poses a danger: Do not use the dryer Risk of explosion. Do not put laundry containing foamed material/rubber in the dryer elastic material may be destroyed and the dryer be damaged due to possible deformation of the foamed material. When cleaning the fluff filter, make sure that no foreign material (down or filling material) gets into the air duct opening. If necessary, clean the drum beforehand with a vacuum cleaner.

If foreign material should still get into the air duct call the after-sales service Risk of fire/explosion. Light things, such as long hair, may be sucked into the air inlet of the dryer Risk of injury. Switch off the dryer once the programme has ended. The water from condensation is not drinking water and may be contaminated with fluff. Do not use the dryer if it is defective or if you suspect that it is. Repairs must only be carried out by the after-sales service. Do not use the dryer if the mains cable is defective. To avoid danger, only have the defective mains cable replaced by the after-sales service. For safety reasons, you must only use genuine spare parts and accessories. Pull out the appliance plug, then cut off the mains cable from the appliance.

Dispose of the appliance at a municipal waste disposal site. Packaging: Keep all packaging out of reach of babies and children Risk of suffocation. All materials are environmentally sound and can be reused. Dispose of them in an environmentally-responsible manner. Water is leaking out. The door opens by itself. Creasing. Drying result is not satisfactory (laundry feels too damp). Fine adjust for the dryness levels page 5. Fine layer of limescale on the humidity sensors Clean the moisture sensors page 8.

Programme termination, e.g. tank full, mains power supply failure, door open or maximum drying time reached? Drying time too long. Clean the fluff filter under running water Insufficient supply of air Air inlet possibly blocked Clear inlet page 4/11. page 9.

Ventilate the Ensure that air can circulate. Operation Ambient temperature higher than 35°C room. One or more indicator lights are flashing. Clean the fluff filter and heat exchanger page 4,8/11. Check the installation conditions page 9.

Switch off, allow to cool, switch back on and restart the programme. Remove the laundry from the dryer immediately and spread out. This allows the heat to dissipate. Be careful as the door, the drum and the laundry may be hot.



[You're reading an excerpt. Click here to read official BOSCH
WTB-86200-LOGIXX-8 user guide
http://yourpdfguides.com/dref/5450681](http://yourpdfguides.com/dref/5450681)