



# Your PDF Guides

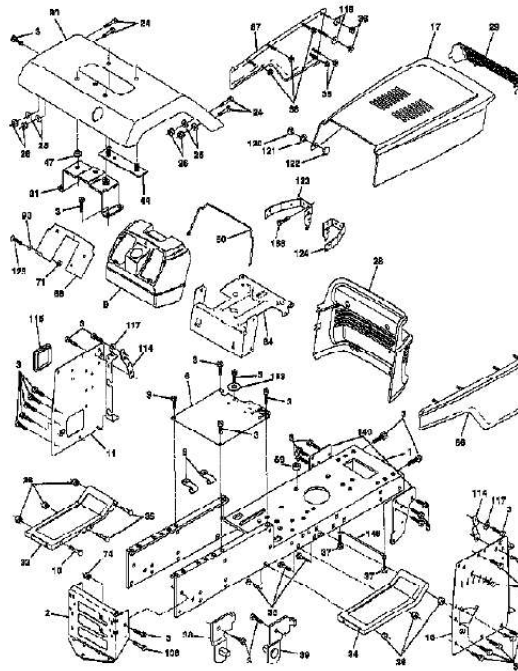
You can read the recommendations in the user guide, the technical guide or the installation guide for AYP RKG20H46A. You'll find the answers to all your questions on the AYP RKG20H46A in the user manual (information, specifications, safety advice, size, accessories, etc.). Detailed instructions for use are in the User's Guide.

**User manual AYP RKG20H46A**  
**User guide AYP RKG20H46A**  
**Operating instructions AYP RKG20H46A**  
**Instructions for use AYP RKG20H46A**  
**Instruction manual AYP RKG20H46A**

RKG20H46A (1999)  
CHASSIS AND ENCLOSURES

Page 1 of 23

## TRACTOR -- MODEL NUMBER RKG20H46A CHASSIS AND ENCLOSURES



[You're reading an excerpt. Click here to read official AYP RKG20H46A user guide](http://yourpdfguides.com/dref/440273)  
<http://yourpdfguides.com/dref/440273>

**Manual abstract:**

RATCH.FEMAL WASHER.NYLON RIVET.RATCHET.MAL BRKT ASM PIVOT LH BRKT ASM PIVOT RH SCREW BRKT SUSPENSION "ROD POVOT,CHASSIS" WASHER GT "SCREW,HWH.D.HI-LO#13-16X3/4" Page 2 of 23 RKG20H46A (1999) DECALS Page 3 of 23 RKG20H46A (1999) DECALS Ref # 1 2 3 4 5 6 7 8 9 10 11 12 13 14 15 16 17 19 Part Number 140837 156964 168485 168427 106202X 157140 101892X 168486 168489 168480 168487 168488 168482 145005 160397 168479 168548 137259 142341 138311 133671 168216 168217 Qty Description DECAL BRAK PARK DECAL OPER INSTR. DECAL DECAL.BATT REFLECTOR-TAIL YT DECAL.CAUT.ENG/FR DECAL T DECAL DECAL DECAL. FENDER.SIDE DECAL.DASH DECAL DECAL DECAL.BATRY.3-3908 SUB= 532160397 DECAL.

FENDER.LOGO DECAL.MOWER "DECAL, WARNING" DECAL DRAWBAR LH DECAL HANDLE LIFT FOOTREST PAD MANUAL.O.RKG20H46A OWNER'S MANUAL Page 4 of 23 RKG20H46A (1999) DRIVE Page 5 of 23 RKG20H46A (1999) DRIVE Ref # 1 2 3 8 9 10 14 16 19 20 21 22 23 24 25 26 27 28 29 30 31 32 33 34 35 36 37 38 39 40 41 42 43 47 48 49 50 51 53 55 56 57 59 61 62 63 65 66 69 71 73 76 77 81 82 83 89 93 Part Number SUPPLIER 142431 143995 166020 160889 76020416 10040400 73800500 73800600 150280 121274X 158274 154978 73350600 106888X 19131316 76020412 145204 71673 123780X 123791X 74760512 72140506 155071 120183X 19211616 1572H 131494 74760644 4470J 165838 19131312 19111012 127783 154407 123205X 74760624 73680600 105710X 105709X 74760620 161741 140312 17490612 123533X 161400 10040700 161488 142432 158283 158282 12000053 9396E 165598 123782X 19171216 164892X428 142564 Qty Description CHECK WITH SUPPLIER SPRING RET BRAKE PULLEY. TRANSAXLE ROD.SHIFT.FEND.ADJ.YT CLUTCH.ELECTRIC PIN COTTER 1/8 LOCKWASHER NUT NUT BOLT.7/16-20X4.25 KNOB.DUCKHEAD.1/2 BRAKE.

ROD.HYDRO. BRACKET.CLUT.MTG. NUT SPRING ROD LT WASHER COTTER PIN ROD.BRAKE.PARK.LT PLUNGER CAP T BRKT TRANS LH KEEPER BELT LH BOLT BOLT SHAFT ASM-PEDAL F NYLON BEARING WASHER LT SUB= 2882J FLAT IDLER PULLEY BOLT SPACER T "KEEPER,BELT.IDLER FLAT" WASHER WASHER T SUB= 139245 BELLCRANK. CLUTCH RETAIN BELT SUB= 74930624 SUB= 73690600 "LINK, CLUTCH T" "SPRING, RETURN LT" SUB= 74780620 BELT.DRIVE KEEPER BELT CNTSP SCREW "COVER,PEDAL" PULLEY.ENGINE LOCKWASHER ENGINE BELT KEPR SCREW HEXWSH H-L STRAP.TORQUE.LH. HYDRO STRAP.TORQUE.RH.HYDRO E RING HYT SQ KEY STD SHIFT.ASM.

CROSS.TAPER "SPRING,TORSION" WASHER CONSOLE.SHIFT.AUTO.YT/GT.BLACK "LINE FUEL HYD 4"" Page 6 of 23 RKG20H46A (1999) DRIVE Ref # 94 95 96 100 102 103 110 111 126 127 128 129 131 133 134 135 136 137 138 139 140 141 142 145 146 150 151 156 158 159 160 161 162 163 164 165 166 168 169 171 189 Part Number 140462 158508 4497H 19111216 141322 73940800 74760612 123776X 1685H 74490548 158284 105529X 10140500 165926 158278 123800X 163168 19111212 19112016 74780612 4475J 159197 74330516 74490540 74490536 165850 19133210 166002 165589 165494 19292016 72140406 73680400 74780416 19091010 165623 166880 165492 165581 17490608 160849 Qty Description "FAN 7"" HYDRO" CONTROL.ASM.BYPAS RETAINER M WASHER M WASHER BELLEVILLE SUB= 73360800 SUB= 74780612 BRKT TRANS RH SUB= 68478 BOLT.HEX.FLGHD.

BRKT NEUTRAL ADJ SUB= 139888 SUB= 10040500 TRANSAXLE LINK "KEEPER BELT,RH" WASHER WASHER.AXLE.HYDRO WASHER WASHER BOLT BUSHING.PINION.SECTOR PIN HITCH BOLT.5/16X24X1 BOLT.HEX.FLGHD BOLT.HEX.FLGHD. @@@@@"PULLEY IDLER,FLAT" WASHER HYT BOLT.SHOULDER WHEEL GAGE DONUT LOCKNUT WASHER ARM.IDLER.PRIM.46 PULLEY.

IDLER.4.25 MANDREL SERV ASM DECK COMPLETE Page 15 of 23 RKG20H46A (1999) SCHEMATIC Page 16 of 23 RKG20H46A (1999) SCHEMATIC Ref # Part Number REFER Qty Description REFER TO IMAGE Page 17 of 23 RKG20H46A (1999) SEAT ASSEMBLY Page 18 of 23 RKG20H46A (1999) SEAT ASSEMBLY Ref # 1 2 5 6 7 10 11 12 13 14 15 16 17 18 21 22 24 25 27 28 Part Number 140118 140551 145006 7380060 124181X 155925 166369 121246X 121248X 72050412 121249X 123740X 123976X 124238X 153236 73800500 19171912 127018X 17490608 150176 Qty Description SEAT.2500/1516.BK BRACKET PVT SEAT CLIP.PUSH-IN.HING SUB= 73800600 SPRING COMPRESSIO PAN-SEAT KNOB.SEAT.ADJ.WINGNUT BRKT SWITCH BUSHING BOLT-RD HD SQ NK SPACER SPLIT SPRING COMPRESSED SUB= 73900400 CAP SPRING "BOLT,SHOULDER" NUT WASHER "BOLT,SHOULDER" SCREW LT BOLT.

5/16-18.UNC Page 19 of 23 RKG20H46A (1999) STEERING ASSEMBLY Page 20 of 23 RKG20H46A (1999) STEERING ASSEMBLY Ref # 1 2 3 4 5 6 7 8 9 10 11 12 13 15 17 18 19 22 23 25 27 29 32 33 34 35 36 37 38 39 40 41 42 43 46 47 56 62 65 66 67 68 79 80 Part Number 121472X 154427 156483 157473 6266H 121748X 19272016 12000029 3366R 156438 10040600 73940800 154779 73901000 156543 57079 160395 165857 165851 154406 136874 17490612 139929 19111216 10040500 73810500 145207 152927 126805X 100712K 7810H 100711L 140216 121749X 121232X 6855M 19131210 167905 154780 154404 74781044 154429 19132012 74950612 Qty Description SUB= 150546 AXLE ASM SPINDLE.ASM.LH "SPINDLE ASM,RH" WASHER. T WASHER WASHER RING COL. SRTG. BEAR. DRAGLINK-STAMPED LOCKWASHER SUB= 73360800 BEARING AXLE "NUT-LOC,FLANGE LT" SHAFT ASM STEERNG THRUST WASHER SUPPORT.SHAFT.STEER SCREW. HX.WSH.HD SHAFT.ASM.PITMAN BRKT-STEERING GEAR SECTOR SCREW ROD. TIE.19.75 WASHER M LOCKWASHER NUT.LOCK.5/16-24 BUSHING.

STRG.3/4 "SCREW-TT,10-32 FL" "INSERT,STR WHEEL" WASHER GRIPCO NUT ADAPTER LT BOOT SHAFT STEER WASHER CAP ZERK M WASHER KIT.STEER.ASM.LT SPACER AXLE "BEARING-ARM,PITMA" BOLT BRACE AXLE WASHER BOLT.HX.NYLON3/8-16X3/ Page 21 of 23 RKG20H46A (1999) WHEELS/TIRES Page 22 of 23 RKG20H46A (1999) WHEELS/TIRES Ref # 1 2 3 4 4 5 6 7 8 9 10 10 11 Part Number 59192 65139 106222X PARTSIMAGE 59904 106732X427 278H 9040H 124074X427 124106X PARTSIMAGE 7154J 104757X 144334 Qty Description VALVE CAP VALVE STEM LT SUB= 122073X REFER TO PARTS IMAGE TUBE.5.3/4.5/6 "RIM ASM 6"" FRT" FITTING LT "FLANGE, BEARING" RIM.

REAR. @TUBE Page 23 of 23.



[You're reading an excerpt. Click here to read official AYP](#)

[RKG20H46A user guide](#)

<http://yourpdfguides.com/dref/440273>