



# Your PDF Guides

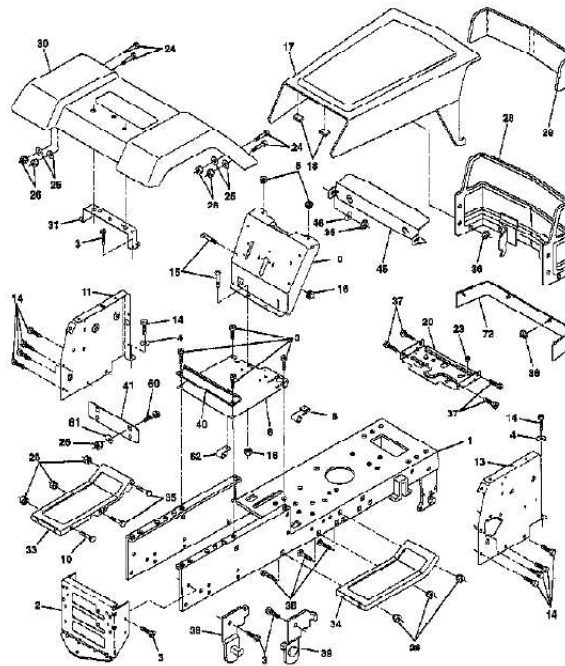
You can read the recommendations in the user guide, the technical guide or the installation guide for AYP CTW14542A. You'll find the answers to all your questions on the AYP CTW14542A in the user manual (information, specifications, safety advice, size, accessories, etc.). Detailed instructions for use are in the User's Guide.

**User manual AYP CTW14542A**  
**User guide AYP CTW14542A**  
**Operating instructions AYP CTW14542A**  
**Instructions for use AYP CTW14542A**  
**Instruction manual AYP CTW14542A**

CTW14542A (1996)  
CHASSIS AND ENCLOSURES

Page 1 of 27

**TRACTOR - - MODEL NUMBER CTW14542A**  
**CHASSIS AND ENCLOSURES**



[You're reading an excerpt. Click here to read official AYP CTW14542A user guide](http://yourpdfguides.com/dref/438803)  
<http://yourpdfguides.com/dref/438803>

*Manual abstract:*

W/SD.PNLS.LT SUB= 532126938 PLATE.MTG.BTRY.TK SUB= 532124028 BOLT WASHER NUT GRILLE SUB= 133954 FENDER.PNT. BRACKET SUPT  
FEND FOOTREST.LH.PERF.

FOOTREST.RH.PERF. BOLT PAL NUT LT SCREW LT BRACKET ASM LH BRACKET ASM RH SPACER FENDER LT PLATE EXTEN FEND SUB=  
918132257 RETAINER BOLT WASHER CLIP.WIRE STRAP.

GRILLE.PNT. PLUG BUTTON T Page 2 of 27 CTW14542A (1996) DECALS Page 3 of 27 CTW14542A (1996) DECALS Ref# Part Number 1 2 3 4 5 6 7 8 9  
10 12 13 15 16 17 138955 150421 150419 129823 272991 133796 4900J 150420 131425 146644 135013 150423 136832 150422 140837 138311 150418  
145278 LBD48 C42 LC05 CH208 LSB42 MK420 Qty Description REFER TO IMAGE DECAL.DASH.INST.

DECAL.GRILLE.RALY DECAL.HD.RH. @@@@ @@@@ @@@@ @SRTG. BEAR. SUB= 532130468 LOCKWASHER SUB= 7810H BEARING BOLT HEX  
5/8-11 "NUT-LOC,FLANGE LT" AXLE PIN SHAFT ASM THRUST WASHER SUPPORT.SHAFT SUB= 532126684 LOCKWASHER "SCREW,SPECIAL"  
SUB= 918127501 NYLINER T "BRKT,STEERING" BUSHING.DRAGLINK GEAR SECTOR WASHER SCREW COTTER PIN TIE ROD SUB= 155106 SUB=  
98000165 CAP STEER AYP WASHER T GRIPCO NUT ADAPTER-WHEEL LT "TUBE, STR SHAFT" WASHER CAP ZERK M SUB= 156593 Page 22 of 27  
CTW14542A (1996) TRANSAXLE PEERLESS Page 23 of 27 CTW14542A (1996) TRANSAXLE PEERLESS Ref# 1 2 3 4 5 6 7 8 9 10 11 12 13 14 15 17 18 20  
21 22 23 25 26 27 28 29 30 31 32 33 34 35 36 37 38 39 40 41 42 42A 43 44 45 46 47 48 49 50 51 52 53 54 56 57 58 59 60 61 Part Number 772108A 780086  
770102A 776260 776219B 778139 778136 792136A 784352 784355 778229 778113A 778221 778068 778260 786139 786102 792077 792078 792079  
788061 792073 792125 792035 788040 780072 780108 780001 792001 788051 780105A 780118A 790003 790007 799021 786026 792076A 790079 792073  
792085A 792075 790025 786066 786086 774690 774691 778215 778125 778124A 778123A 778122A 778273 778230 778151 778126A 778127A 778128A  
778163 Qty Description TRANSAXLE COVER BEARING, NEEDLE TRANSAXLE CASE SHAFT, COUNTER OUTPUT SHAFT AND PINION GEAR,  
OUTPUT GEAR, SPUR, 15 TEETH SHIFT KEY COLLAR, SHIFTER ROD & FORK ASSY, SHIFT GEAR, BEVEL, 42 TEETH BEVEL PINION, INPUT  
GEAR, BEVEL GEAR, BEVEL, PINION GEAR, RING PIN, DRIVE SPACER, NEUTRAL BALL STEEL, 5/16" DIA.

SCREW, 3/8-16 X 3/8" SPRING RING, SEAL SCREW, 1/4-20 X 1-1/4 RING RETAINER RING, RETAINER RETAINING RING WASHER THRUST WASHER  
THRUST WASHER "O" RING SEAL, SQUARE CUT BUSHING, FLANGED BUSHING, FLANGED DISK, BRAKE PLATE BRAKE PAD BRAKE PAD PIN  
DOWEL WASHER BRAKE LEVER SCREW, 1/4-20 X 1-1/4 SCREW, 1/4-20 X 2-1/4 LOCKNUT 5/16-24 HOLDER BRAKE PAD SPACER BRKT BRAKE  
LEVER AXLE AXLE GEAR, SPUR, 37 TEETH GEAR, SPUR, 35 TEETH GEAR, SPUR, 30 TEETH GEAR, SPUR, 25 TEETH GEAR, SPUR, 22 TEETH  
GEAR, SPUR, 19T GEAR, SPUR, 12 TEETH GEAR, SPUR, 15 TEETH GEAR, SPUR, 20 TEETH GEAR, SPUR, 25 TEETH GEAR, SPUR, 28 TEETH GEAR,  
SPUR, 31 TEETH Page 24 of 27 CTW14542A (1996) TRANSAXLE PEERLESS Ref# 65 66 67 68 69 70 71 72 72A 76 77 79 81 82 83 90 103 104 150 Part  
Number 780109 776135 776315A 786116 780051 786118 788069 792165 788091 780090 788078A 792144 786081 786082 786123 788067B 792166 792167  
510334 Qty Description WASHER, THRUST SHAFT, INPUT SHAFT, BRAKE, 4 KEYED DISK WASHER THRUST SPACER SEAL SQUARE CUT  
THREADED PLUG 9/16-18 "O" RING WASHER, THRUST INVERTED RETAINING RING SPRING CHAIN, ROLLER SPROCKET 9T SPROCKET 18T  
(REV) GREASE BENTONITE, 32 OZ. @TUBE Page 27 of 27.



[You're reading an excerpt. Click here to read official AYP  
CTW14542A user guide  
http://yourpdfguides.com/dref/438803](http://yourpdfguides.com/dref/438803)